

## Efficient sets are small

Beardon, Alan F.; Rowat, Colin

DOI:

[10.1016/j.jmateco.2013.04.006](https://doi.org/10.1016/j.jmateco.2013.04.006)

License:

Creative Commons: Attribution (CC BY)

*Document Version*

Publisher's PDF, also known as Version of record

*Citation for published version (Harvard):*

Beardon, AF & Rowat, C 2013, 'Efficient sets are small', *Journal of Mathematical Economics*, vol. 49, no. 5, pp. 367-374. <https://doi.org/10.1016/j.jmateco.2013.04.006>

[Link to publication on Research at Birmingham portal](#)

### **Publisher Rights Statement:**

Eligibility for repository : checked 31/03/2014

### **General rights**

Unless a licence is specified above, all rights (including copyright and moral rights) in this document are retained by the authors and/or the copyright holders. The express permission of the copyright holder must be obtained for any use of this material other than for purposes permitted by law.

- Users may freely distribute the URL that is used to identify this publication.
- Users may download and/or print one copy of the publication from the University of Birmingham research portal for the purpose of private study or non-commercial research.
- User may use extracts from the document in line with the concept of 'fair dealing' under the Copyright, Designs and Patents Act 1988 (?)
- Users may not further distribute the material nor use it for the purposes of commercial gain.

Where a licence is displayed above, please note the terms and conditions of the licence govern your use of this document.

When citing, please reference the published version.

### **Take down policy**

While the University of Birmingham exercises care and attention in making items available there are rare occasions when an item has been uploaded in error or has been deemed to be commercially or otherwise sensitive.

If you believe that this is the case for this document, please contact [UBIRA@lists.bham.ac.uk](mailto:UBIRA@lists.bham.ac.uk) providing details and we will remove access to the work immediately and investigate.

Efficient sets are small<sup>☆,☆☆</sup>Alan F. Beardon<sup>a</sup>, Colin Rowat<sup>b,\*</sup><sup>a</sup> DPMMS, University of Cambridge, United Kingdom<sup>b</sup> Department of Economics, University of Birmingham, United Kingdom

## ARTICLE INFO

## Article history:

Available online 2 May 2013

## Keywords:

Efficient sets  
Lebesgue measure  
Hausdorff dimension  
Pillage games

## ABSTRACT

We introduce efficient sets, a class of sets in  $\mathbb{R}^p$  in which, in each set, no element is greater in all dimensions than any other. Neither differentiability nor continuity is required of such sets, which include: level sets of utility functions, quasi-indifference classes associated with a preference relation not given by a utility function, mean–variance frontiers, production possibility frontiers, and Pareto efficient sets. By Lebesgue's density theorem, efficient sets have  $p$ -dimensional measure zero. As Lebesgue measure provides an imprecise description of small sets, we then prove the stronger result that each efficient set in  $\mathbb{R}^p$  has Hausdorff dimension at most  $p - 1$ . This may exceed its topological dimension, with the two notions becoming equivalent for smooth sets. We apply these results to stable sets in multi-good pillage games: for  $n$  agents and  $m$  goods, stable sets have dimension at most  $m(n - 1) - 1$ . This implies, and is much stronger than, the result that stable sets have  $m(n - 1)$ -dimensional measure zero, as conjectured by Jordan.

© 2013 The Authors. Published by Elsevier B.V. All rights reserved.

## 1. Introduction

For  $\mathbf{x}, \mathbf{y} \in \mathbb{R}^p$ ,  $\mathbf{x} \gg \mathbf{y}$  means  $x_i > y_i$  for all  $i = 1, \dots, p$ . Then:

**Definition 1.1.** A subset  $E$  of  $\mathbb{R}^p$  is an *efficient set* if it has the property that, for all  $\mathbf{x}$  and  $\mathbf{y}$  in  $\mathbb{R}^p$ , if  $\mathbf{x} \gg \mathbf{y}$  then  $\mathbf{x}$  and  $\mathbf{y}$  are not both in  $E$ .

Efficient sets<sup>1</sup> pervade economics, including as examples: level sets of continuous utility functions, quasi-indifference classes,<sup>2</sup> mean–variance frontiers, production possibility frontiers, Pareto

efficient sets, and the efficient frontiers of data envelopment or stochastic frontier analysis. Furthermore, we have natural intuitions about the size of such sets. Most obviously, they are small. More strongly, their dimension is one less than that of their ambient space, making them subsets of regular curves or surfaces. This paper proves that these intuitions are correct.

Our first intuition, that efficient sets should be small, is naturally thought of in the sense of Lebesgue: efficient sets in  $\mathbb{R}^p$  should have  $p$ -dimensional measure zero. We show that this is an immediate consequence of Lebesgue's density theorem. Other proofs (with the additional assumption of measurability) exist in the literature; Candeal and Induráin (1994), for example, show this in the context of indifference sets. As a measure theoretic result, it implies the weaker topological result that efficient sets have empty interior.<sup>3</sup>

While this establishes the usual understanding of nullity, Lebesgue measure fails to differentiate between sets which are of measure zero, but of very different sizes.<sup>4</sup> Consequently, it cannot

<sup>☆</sup> This is an open-access article distributed under the terms of the Creative Commons Attribution License, which permits unrestricted use, distribution, and reproduction in any medium, provided the original author and source are credited.

<sup>☆☆</sup> We are grateful to Bob Anderson, Juan Carlos Candeal, Chris Good, Peter Hammond, Chiaki Hara, Jim Jordan, Herakles Polemarchakis, Rajiv Sarin and Ron Smith for their insights, to the seminar audience at the World Congress of the Econometric Society and SAET 2011, to the ESRC for funding under its World Economy and Finance programme (RES-156-25-0022) and to two anonymous referees for their careful remarks. Rowat thanks Birkbeck for its hospitality. An earlier version of this paper circulated as 'Stable sets in multigood pillage games are small'.

\* Corresponding author. Tel.: +44 121 414 3754.

E-mail addresses: [a.f.beardon@dpmms.cam.ac.uk](mailto:a.f.beardon@dpmms.cam.ac.uk) (A.F. Beardon), [c.rowat@bham.ac.uk](mailto:c.rowat@bham.ac.uk), [c.rowat@espero.org.uk](mailto:c.rowat@espero.org.uk) (C. Rowat).

<sup>1</sup> Properly, this defines *weakly efficient sets*; these are larger than the conventionally defined efficient sets, which exclude distinct  $\mathbf{x}$  and  $\mathbf{y}$  such that  $x_i \geq y_i \forall i$ . Thus, our bounds on the size of efficient sets therefore also apply to conventionally defined efficient sets.

<sup>2</sup> Let  $\succsim$  be a preference relation on the positive orthant,  $\mathbb{R}_{++}^p$ , which need not be represented by a continuous utility function. Given any point  $\mathbf{x}$  in  $\mathbb{R}_{++}^p$ , each ray,  $R$ ,

from the origin is divided into two parts by a unique point,  $\mathbf{x}_R$ , such that  $\mathbf{x}$  is strictly preferred to all points on  $R$  strictly below  $\mathbf{x}_R$ , while all points on  $R$  strictly beyond  $\mathbf{x}_R$  are strictly preferred to  $\mathbf{x}$ . The quasi-indifference class for  $\mathbf{x}$  is the set of such points  $\mathbf{x}_R$ . In the case of the lexicographic ordering on  $\mathbb{R}_{++}^2$ , each quasi-indifference class is a vertical line (Beardon, 1995).

<sup>3</sup> The most common version of this is that locally non-satiated indifference curves are not thick (Arrow and Hahn, 1971; Diewert, 1973; Mas-Colell et al., 1995). While topological notions of nullity and genericity are "less sharp" (Mas-Colell, 1985, p. 318) than their measure theoretic equivalents, they are more familiar to economists.

<sup>4</sup> Lebesgue measure is also meaningless if  $p$  is infinite, an observation which has led to interest in concepts like 'prevalence' and 'shyness' (Mas-Colell, 1985; Hunt et al., 1992). This is not a concern of the present paper.

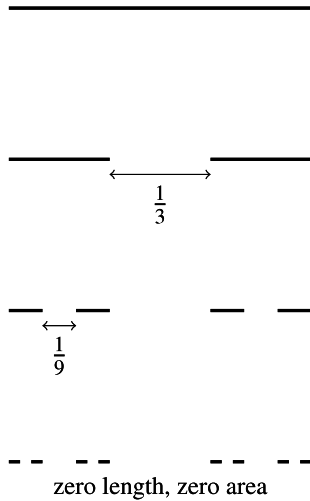


Fig. 1. Middle third Cantor set.

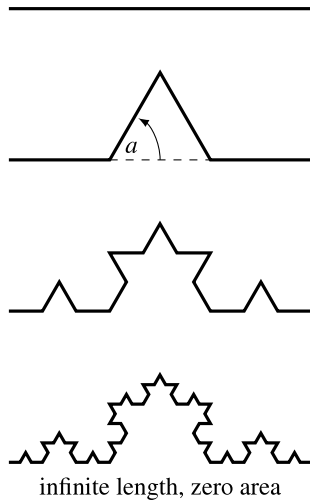


Fig. 2. von Koch 'snowflake' curve.

establish our second natural intuition about efficient sets. For example, the straight line, the nowhere dense Cantor set formed by iteratively removing the middle third from line segments (q.v. Fig. 1), and the infinite length von Koch curve formed by iteratively augmenting line segments' middle thirds (q.v. Fig. 2) all have plane measure zero. Thus, since Hausdorff, showing that a set has Lebesgue measure zero has simply raised a more basic problem, namely that of finding the appropriate dimension in which to then measure the set.

Furthermore, since Peano's space-filling curve in the late 19th century, a distinction has been drawn between topological and measure theoretic notions of dimension.<sup>5</sup> The former is better known to economists due to its applications within general equilibrium theory (q.v. Debreu, 1970, 1972, 1976): assuming differentiability, a  $p - 1$  dimensional object in  $\mathbb{R}^p$  is a  $p - 1$ -dimensional submanifold of  $\mathbb{R}^p$ . As any point in the submanifold is locally homeomorphic to  $\mathbb{R}^{p-1}$ , it can be described by  $p - 1$  parameters. Application of Sard's theorem allows conclusions about solutions' uniqueness, at least locally.

When local uniqueness is not a desired property, the differentiability requirements of this approach are unnecessarily restrictive. In some cases, differentiability may only fail on a null subset

<sup>5</sup> See Jordan and Xu (1999), Kehoe et al. (2002) and Nisan and Segal (2006) for references to space filling curves, such as Peano's, in the economics literature.

Table 1  
Three sets with plane measure zero.

	Cantor set	line	von Koch curve
Lebesgue plane measure	0	0	0
Topological dimension	0	1	1
Hausdorff dimension	$\frac{\log 2}{\log 3}$	1	$\frac{\log 4}{\log 3}$

of a theoretically generated efficient set (e.g. the standard Leontief indifference curves); in others, such as the frontier of the production set in Jouini (1988), the failure is more pervasive. In empirical work, where efficient sets are interpolated from a finite data set (e.g. data envelopment or stochastic frontier analysis), one may wish to know whether one's results are insensitive to differentiability or continuity conditions imposed by any particular interpolation technique.

More fundamentally, though, topology's concern is shape, rather than size. Thus, even on metric spaces, topological dimension is an unreliable guide to size. A standard example is the union of the set of rationals and the irrationals on the unit interval: each has topological dimension zero, yet their union has dimension one.<sup>6</sup> More generally, homeomorphic transformations – which preserve topological dimension – can be arbitrarily extreme in their distortion of measure: continuous, monotone maps may be constructed from null sets to sets with full Lebesgue measure.<sup>7</sup>

Thus, Hausdorff's measure theoretic understanding of dimension is used to establish our second intuition. It is, by design, a more sensitive concept than either Lebesgue measure or topological dimension, being defined for any extended non-negative real number.<sup>8</sup> subset  $E$  of  $\mathbb{R}^p$  with  $p$ -dimensional Lebesgue measure zero, the Hausdorff dimension can be any number between 0 and  $p$ , inclusive (Beardon, 1965). Of the above examples, Table 1 illustrates that only Hausdorff dimension is capable of discrimination between all three.

The topological and Hausdorff notions of dimension do coincide for smooth sets. For non-smooth sets, Hausdorff dimension may exceed topological dimension: any curve that is homeomorphic to a circle is a one-dimensional manifold, but a sufficiently irregular curve can have Hausdorff dimension greater than one. This is the case for the von Koch curve, whose topological dimension is 1 (Epstein and Śniatycki, 2008). (In contrast to topological dimension, Hausdorff dimension is only invariant under bi-Lipschitz transformations.) Furthermore, approximations to the von Koch curve based on finite iterations of the sort displayed in Fig. 2 maintain a constant Hausdorff dimension of 1.

Our main result is that the Hausdorff dimension of any efficient set in  $\mathbb{R}^p$  is no more than  $p - 1$ . This satisfies our intuition that efficient sets are (subsets of) regular curves or surfaces rather than, say, thick sets like the von Koch curve. This result derives entirely from the properties efficient sets, regardless of whether or not they are also sub-manifolds.

Finally, we provide a non-trivial application of the results, bounding the stable sets of multi-good pillage games. In one-good pillage games, the stable sets are finite (Jordan, 2006).<sup>9</sup> In the

<sup>6</sup> More generally, the decomposition theorem states that any set in a separable, metrizable space with topological dimension  $\leq p$  may be decomposed into  $p + 1$  disjoint subsets, each with dimension  $\leq 0$  (Hurewicz and Wallman, 1941). In such spaces, the coincidence theorem states that Lebesgue covering dimension, inductive dimension, and large inductive dimension – the three leading notions of topological dimension – are equivalent.

<sup>7</sup> A classic example can be found in Gelbaum and Olmsted (1962, 8.16), which uses a Cantor function; Mehta (1991) also uses Cantor's function, in a different context.

<sup>8</sup> When even this is not fine enough, Hausdorff dimension may be defined over dimension functions (Falconer, 1990; Mattila, 1995).

<sup>9</sup> See Kerber and Rowat (2011) and Saxton (2011) for tighter bounds.

two-good world, Rowat (2009) proved that stable sets have empty interior, and Jordan has conjectured in personal communication that they have measure zero. We confirm Jordan’s conjecture (and its stronger Hausdorff dimension variant) by showing that we may work equivalently in either of two convenient Euclidean subspaces: an  $mn$ -dimensional allocation space, or an  $m(n - 1)$ -dimensional ‘Edgeworth’ space. While it is straightforward to demonstrate this, by showing that the projection is bi-Lipschitz, we are not aware that this has been done before, making it perhaps of interest in its own right.

Section 2 proves that efficient sets in  $\mathbb{R}^p$  have  $p$ -dimensional Lebesgue measure zero. Section 3 introduces Hausdorff dimension and proves that efficient sets have dimension no more than  $p - 1$ . Section 4 introduces multi-good pillage games and applies the above results to bound their stable sets.

Before proceeding, we note some basic properties of efficient sets that shall be used throughout:

**Lemma 1.2.** *Let  $E$  be an efficient set in  $\mathbb{R}^p$ . Then:*

1. *the closure  $\bar{E}$  of  $E$  is an efficient set;*
2. *any subset of  $E$  is an efficient set;*
3. *if  $T$  is a translation of  $\mathbb{R}^p$ , then  $T(E)$  is an efficient set.*

**Proof.** Suppose that  $E$  is an efficient set, but that its closure  $\bar{E}$  is not. Then there are  $\mathbf{u}$  and  $\mathbf{v}$  in  $\bar{E}$  with  $\mathbf{u} \gg \mathbf{v}$ . Since this implies that there are  $\mathbf{u}'$  and  $\mathbf{v}'$  in  $E$  with  $\mathbf{u} \gg \mathbf{u}' \gg \mathbf{v}' \gg \mathbf{v}$ , this is a contradiction.

The remaining two properties are trivial.  $\square$

**2. Efficient sets have measure zero**

Let  $\mu_p$  be Lebesgue’s  $p$ -dimensional measure in  $\mathbb{R}^p$ . If  $\mathbf{x}$  and  $\mathbf{y}$  are in  $\mathbb{R}^p$  then we write  $\mathbf{x} = (x_1, \dots, x_p)$ ;  $\|\mathbf{x} - \mathbf{y}\|$  denotes the Euclidean distance between  $\mathbf{x}$  and  $\mathbf{y}$ .

This section’s main result is that each efficient set has measure zero:

**Theorem 2.1.** *If  $E$  is an efficient set in  $\mathbb{R}^p$ , then  $\mu_p(E) = 0$ .*

To establish this, we use Lebesgue’s density theorem, which requires the following definition:

**Definition 2.2.** The *density* of a measurable subset  $A$  of  $\mathbb{R}^p$  at a point  $\mathbf{a}$  is

$$\rho_A(\mathbf{a}) \equiv \lim_{r \rightarrow 0} \frac{\mu_p(A \cap \{\mathbf{x} : \|\mathbf{x} - \mathbf{a}\| < r\})}{\mu_p(\{\mathbf{x} : \|\mathbf{x} - \mathbf{a}\| < r\})},$$

whenever this limit exists.

Lebesgue’s density theorem is then:

**Theorem 2.3** (Corollary 2.14, Mattila, 1995). *If  $A$  is measurable, then  $\rho_A(\mathbf{x})$  exists and equals one for almost all points  $\mathbf{x}$  in  $A$ . In particular, if  $A$  is measurable and has positive measure, then  $\rho_A(\mathbf{x})$  exists and equals one at some  $\mathbf{x}$  in  $A$ .*

**Example 2.4** (Cantor Sets with Positive Measure). Cantor sets with linear measure arbitrarily close to one while remaining nowhere dense may also be constructed (Gelbaum and Olmsted, 1962, pp.88-89). Begin with  $E_0 = [0, 1]$  and an arbitrary  $\alpha \in (0, 1)$ . Now let  $E_n$  be the union of  $2^n$  mutually disjoint closed intervals of equal length formed by removing open intervals of length  $2^{1-2n}\alpha$  from the middle of each interval in  $E_{n-1}$ ; for any  $n$ ,  $2^{n-1}$  intervals are removed. Thus, the length removed after  $n$  such operations is  $(\frac{1}{2} + \frac{1}{4} + \dots + \frac{1}{2^n})\alpha$ , which converges to  $\alpha$  as  $n$  converges to  $\infty$ . The ensuing set therefore has linear measure  $1 - \alpha$ .

Fig. 3 illustrates an example in which  $\alpha = \frac{2}{3}$ , so that  $\mu_1 = \frac{1}{3}$ . Unlike the middle-third Cantor set, the relative length of the removed segment decreases at each iteration.

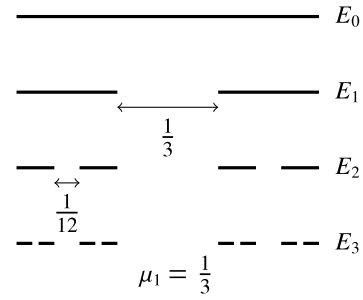


Fig. 3. Cantor set when  $\alpha = \frac{2}{3}$ .

Sets formed this way are also called ‘fat’ Cantor sets, Smith–Volterra–Cantor sets, or  $\varepsilon$ -Cantor sets (Edlin and Shannon, 1998; Aliprantis and Burkinshaw, 1981). As they have positive measure they must, by the Lebesgue density theorem, contain elements with density one. Intuitively, these are all the elements that are not the endpoints of intervals: while there are countably many endpoints (with density less than one), there are uncountably many elements that are not endpoints.<sup>10</sup>

We may now state the proof of this section’s main result:

**Proof of Theorem 2.1.** Let  $\bar{E}$  be the closure of  $E$ . Now  $\bar{E}$  is a closed (hence measurable) and, by Lemma 1.2, efficient set. Take any  $\mathbf{x}$  in  $\bar{E}$  and let  $B(\mathbf{x}, r)$  be the open ball with center  $\mathbf{x}$  and radius  $r$ . Then, as  $U \equiv \{\mathbf{y} \in \mathbb{R}^p : \mathbf{y} \gg \mathbf{x}\}$ ,  $L \equiv \{\mathbf{y} \in \mathbb{R}^p : \mathbf{x} \gg \mathbf{y}\}$  and  $\bar{E}$  are disjoint:

$$\mu_p(U \cap B(\mathbf{x}, r)) = \mu_p(L \cap B(\mathbf{x}, r)) = \frac{1}{2^p} \mu_p(B(\mathbf{x}, r))$$

which implies, in turn, that

$$\mu_p(\bar{E} \cap B(\mathbf{x}, r)) \leq \left(1 - \frac{2}{2^p}\right) \mu_p(B(\mathbf{x}, r)).$$

Thus,

$$\limsup_{r \rightarrow 0} \frac{\mu_p(\bar{E} \cap B(\mathbf{x}, r))}{\mu_p(B(\mathbf{x}, r))} \leq \frac{2^{p-1} - 1}{2^{p-1}} < 1.$$

There are therefore no points  $\mathbf{x}$  in  $\bar{E}$  at which  $\rho_{\bar{E}}(\mathbf{x})$  exists and equals one, and this implies that  $\mu_p(\bar{E}) = 0$ .<sup>11</sup> Since  $E \subset \bar{E}$ , and  $\bar{E}$  has measure zero, it follows from the completeness of Lebesgue’s measure that  $E$  is measurable and has measure zero.  $\square$

Candeal and Induráin (1994) derive a similar result by assuming measurability. Rather than requiring measurability of  $E$ , our result actually proves that  $E$  is measurable. In either case, the result is stronger than the familiar topological result that efficient sets have empty interior: a non-empty interior forces the existence of a ball of positive measure, so that measure zero sets are (weakly) subsets of those with empty interior; sets with empty interior but positive measure, like the Smith–Volterra–Cantor set, make the relation strict.<sup>12</sup>

As argued in the Introduction, finding that a set has Lebesgue measure zero for finite  $p$  is a challenge to find the correct dimension in which to measure the set. To make more precise observations about such a set, we need the notion of Hausdorff dimension, which we now introduce.

<sup>10</sup> Applying the same reasoning to measure zero Cantor sets, ‘almost all’ points means ‘none’.

<sup>11</sup> Use of  $U$  alone yields the weaker bound of  $(2^p - 1)/2^p < 1$ , which still suffices for the result.

<sup>12</sup> Constructing a meager set – negligible, in the topological sense – with full measure on the unit interval is a standard exercise in analysis (q.v. Royden, 1988, Chapter 7, Ex. 33).

### 3. Measuring thin and highly irregular sets

Figs. 1 and 2 illustrated that Lebesgue measure fails to distinguish between very different null sets. Hausdorff noted that a measure zero result indicated that the right dimension for measurement had yet to be found, and defined a set of measures for real rather than just integer dimensions.

**Example 3.1.** Consider a disc  $D$  lying in the plane. Clearly  $D$  has positive, finite, two-dimensional measure, zero volume and, in any reasonable sense, infinite linear measure. Thus, denoting the measure in dimension  $t$  by  $\mathcal{H}^t$ , we have

$$\mathcal{H}^3(D) = 0 < \mathcal{H}^2(D) < +\infty = \mathcal{H}^1(D).$$

The construction of Hausdorff measures allows us to extend these ideas to all extended real, positive  $t$ . In this case we shall see that  $\mathcal{H}^t(D) = +\infty$  when  $t < 2$ , while  $\mathcal{H}^t(D) = 0$  when  $t > 2$ .

We now construct the  $t$ -dimensional Hausdorff measure and apply it to efficient sets.<sup>13</sup> A subset of  $\mathbb{R}^p$  is said to be a  $\delta$ -set, where  $\delta > 0$ , if its diameter,  $d(\cdot)$  is at most  $\delta$ . A  $\delta$ -covering of  $E$ ,  $C(E, \delta)$ , is a countable collection of  $\delta$ -sets whose union covers  $E$ ; we denote the class of  $\delta$ -coverings of  $E$  by  $\mathcal{C}(E, \delta)$ . If  $\delta < \rho$  then  $\mathcal{C}(E, \delta) \subset \mathcal{C}(E, \rho)$ , so that

$$\inf_{A_i \in \mathcal{C}(E, \rho)} \sum_i d(A_i)^t \leq \inf_{A_i \in \mathcal{C}(E, \delta)} \sum_i d(A_i)^t,$$

and this guarantees that the limit

$$\mathcal{H}^t(E) = \lim_{\delta \rightarrow 0} \left\{ \inf_{A_i \in \mathcal{C}(E, \delta)} \sum_i d(A_i)^t \right\} \tag{3.1}$$

exists. We call  $\mathcal{H}^t(E)$ , where  $t \geq 0$ , the  $t$ -dimensional Hausdorff (outer) measure of  $E$ . The Hausdorff  $p$ -dimensional measure  $\mathcal{H}^p$  of a subset  $E$  of  $\mathbb{R}^p$  is related to its Lebesgue measure  $\mu_p$  by  $\mathcal{H}^p(E) = K_p \mu_p(E)$ , where  $K_p$  is a (known) quantity which depends on  $p$  but not  $E$ . Thus,  $\mathcal{H}^p(E) = 0$  if and only if  $\mu_p(E) = 0$ .

The key facts about the  $t$ -dimensional Hausdorff outer measure of  $E$  are:

1. if  $\mathcal{H}^t(E) < +\infty$  and  $s > t$  then  $\mathcal{H}^s(E) = 0$ , and
2. if  $\mathcal{H}^t(E) > 0$  and  $s < t$  then  $\mathcal{H}^s(E) = +\infty$ .

It follows that there is a unique non-negative number  $\dim(E)$ , called the Hausdorff dimension of  $E$ ,

$$\mathcal{H}^t(E) = \begin{cases} 0 & \text{if } t > \dim(E), \\ +\infty & \text{if } 0 \leq t < \dim(E). \end{cases}$$

When  $t = \dim(E)$ , the value of  $\mathcal{H}^t(E)$  can be anywhere in the closed extended interval  $[0, +\infty]$ . The Hausdorff dimension may be greater (but not smaller) than the topological dimension of a manifold. The two definitions agree for sufficiently smooth manifolds.

The preceding allows us to state this section's main result, a counterpart to Theorem 2.1 which establishes the Hausdorff dimension of an efficient set:

**Theorem 3.2.** *If  $E$  is an efficient set in  $\mathbb{R}^p$ , then  $\dim(E) \leq p - 1$ .*

The result that  $\dim(E) \leq p - 1$  is stronger than  $\mu_p(E) = 0$  for it implies that  $\mathcal{H}^t(E) = 0$  for all  $t$  with  $p - 1 < t \leq p$  and not just for  $t = p$ .

<sup>13</sup> See Mattila (1995) for a more thorough treatment of the theory of Hausdorff dimension.

The rest of this section proves the above theorem, by means of the following steps. First, Lipschitz and bi-Lipschitz maps are defined; as they control sets' distortions, this allows presentation of a known theorem controlling sets' dimension under such mappings. In particular, a corollary determines their dimension relative to that of the unit sphere,  $\mathbb{S}$ , in  $\mathbb{R}^p$ . We then present a lemma that radially projects any bounded efficient set,  $E_i$  – possibly under a translation – onto the strictly positive orthant of the unit sphere,  $\mathbb{S} \cap \mathbb{R}_{++}^p$ ; this bounds  $\dim(E_i) \leq p - 1$ . Finally, as any efficient set can be expressed as the countable union of the  $E_i$ , an existing result may be applied to bound  $\dim(E) \leq p - 1$ , the theorem's result.

**Definition 3.3.** A map  $f : A \rightarrow \mathbb{R}^p$ , where  $A \subset \mathbb{R}^p$ , is Lipschitz on  $A$  if there is a positive number  $K$  such that  $\|f(\mathbf{x}) - f(\mathbf{y})\| \leq K \|\mathbf{x} - \mathbf{y}\|$  for all  $\mathbf{x}$  and  $\mathbf{y}$  in  $A$ . The number  $K$  is called a Lipschitz constant for  $f$ . The map is bi-Lipschitz if both it and its inverse are Lipschitz, yielding two Lipschitz constants.

Contraction mappings, for which  $K \leq 1$  in the following definition, are the best known example of Lipschitz mappings within economics.

The following result forms the basis of all our results on Hausdorff dimension. It follows directly from the fact that a  $\delta$ -covering  $\{A_i\}$  of the set  $E$  is mapped by a Lipschitz map  $f$ , with Lipschitz constant  $K$ , to a  $K\delta$ -covering  $\{f(A_i)\}$  of the set  $f(E)$ :

**Theorem 3.4** (Theorem 7.5, Mattila, 1995). *Suppose that  $f : A \rightarrow \mathbb{R}^p$  is Lipschitz, where  $A \subset \mathbb{R}^p$ . Then  $\dim(f(A)) \leq \dim(A)$ .*

An important corollary for us is:

**Corollary 3.5.** *If  $A \subset \mathbb{S}$ , where  $\mathbb{S}$  is the unit sphere in  $\mathbb{R}^p$ , and if a Lipschitz  $f$  maps  $A$  into  $\mathbb{R}^p$ , then*

$$\dim(f(A)) \leq \dim(A) \leq \dim(\mathbb{S}) = p - 1. \tag{3.2}$$

While the Hausdorff dimension of even simple sets may be difficult to compute (Falconer, 1990, Chapter 2), the Corollary's final equality is easily established. Since  $\mathbb{S}$  is compact, given any positive  $r$ ,  $\mathbb{S}$  can be covered by a finite number of open balls  $B(\mathbf{x}_j, r)$  of radius  $r$  centered at  $\mathbf{x}_j$ . Let  $T_j$  be the tangent space of  $\mathbb{S}$  at  $\mathbf{x}_j$ ; this is (up to an isometry)  $\mathbb{R}^{p-1}$ . If  $r$  is sufficiently small then each  $\mathbb{S} \cap B(\mathbf{x}_j, r)$  can be projected (parallel to the normal of  $T_j$ ) onto a ball in  $T_j$ , and these projections are bi-Lipschitz. It follows from Theorem 3.4 (applied to each projection and its inverse) that for each  $\mathbf{x}_j$ ,  $\mathbb{S} \cap B(\mathbf{x}_j, r)$  has dimension  $p - 1$ ; thus  $\mathbb{S}$ , covered by a finite number of objects of dimension  $p - 1$  also has dimension  $p - 1$ .

The remaining two lemmas exploit our ability to express any efficient set  $E$  in terms of bounded efficient sets, which may be translated to lie within the strictly positive orthant.

**Lemma 3.6.** *Suppose that  $E_{++}$  is a bounded, efficient subset of  $\mathbb{R}_{++}^p$ . Then  $\dim(E_{++}) \leq p - 1$ .*

We prove Lemma 3.6 by means of a radial projection, which we now construct. First, let  $\bar{\mathbf{x}}^* \equiv \frac{1}{\sqrt{p}}(1, 1, \dots, 1) \in \mathbb{R}^p$ ; this is in  $\mathbb{S} \cap \mathbb{R}_{++}^p$  and let  $\Omega = \{\mathbf{y} \in \mathbb{R}^p : \mathbf{y} \gg \frac{1}{2}\bar{\mathbf{x}}^*\}$ . By Lemma 1.2, the translation of an efficient set is efficient; by Theorem 3.4 the translation (a degenerate bi-Lipschitz map) leaves unchanged the set's Hausdorff dimension. Thus, it suffices to prove Lemma 3.6 in the case when  $E_{++} \subset \Omega$ . Further, as  $E_{++}$  is bounded, there is a translation of it that lies in  $\Omega$  and outside  $\mathbb{S}$ , allowing:

**Lemma 3.7.** *Let  $E_{++}$  be an efficient set lying outside  $\mathbb{S}$  in  $\Omega$ , so that its radial projection  $E^*$  into  $\mathbb{S}$  lies in  $\Omega$ . Then the inverse of the radial projection map,  $\psi : E^* \rightarrow E_{++}$ , is Lipschitz on  $E^*$ .*



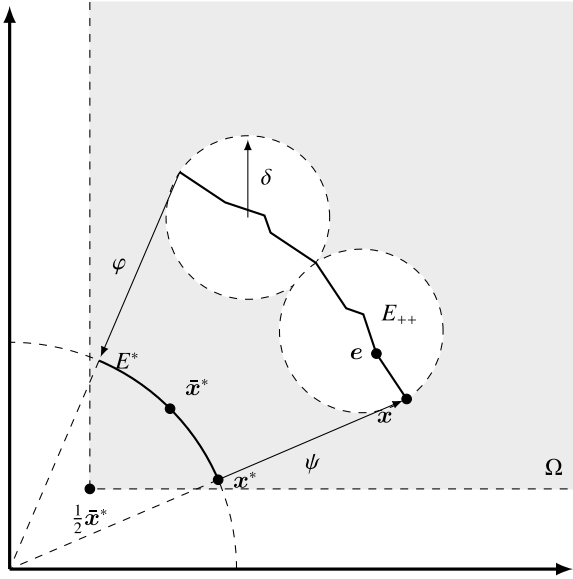


Fig. 4. The mappings  $\varphi$  and  $\psi$  between  $E_{++}$  and  $E^*$ .

The proof will use the following notation: given  $\mathbf{x} \in E_{++}$ , its radial projection onto  $\mathbb{S} \cap \mathbb{R}_{++}^p$  is  $\mathbf{x}^* = \varphi(\mathbf{x}) = \mathbf{x}/\|\mathbf{x}\|$ ; similarly,  $\mathbf{x} = \psi(\mathbf{x}^*) = \|\mathbf{x}\|\mathbf{x}^*$  is the inverse image of  $\mathbf{x}^*$ . Fig. 4 illustrates these points and mappings.<sup>14</sup>

**Proof of Lemma 3.7.** Suppose that  $\mathbf{u}^*$  and  $\mathbf{v}^*$  are in  $E^*$ , and let  $r_u = \|\mathbf{u}\|$ , and similarly for  $\mathbf{v}$ . Then

$$\begin{aligned} \|\psi(\mathbf{u}^*) - \psi(\mathbf{v}^*)\| &= \|\mathbf{u} - \mathbf{v}\| \\ &= \|r_u \mathbf{u}^* - r_v \mathbf{v}^*\| \\ &\leq \|r_u \mathbf{u}^* - r_u \mathbf{v}^*\| + \|r_u \mathbf{v}^* - r_v \mathbf{v}^*\| \\ &= \|\mathbf{u}\| \|\mathbf{u}^* - \mathbf{v}^*\| + \left| \|\mathbf{u}\| - \|\mathbf{v}\| \right|. \end{aligned} \tag{3.3}$$

As  $E_{++}$  is bounded, there is a positive number,  $K_1$ , such that  $\|\mathbf{u}\| \leq K_1$ . So, finding a positive number,  $K_2$ , such that  $\left| \|\mathbf{u}\| - \|\mathbf{v}\| \right| \leq K_2 \|\mathbf{u}^* - \mathbf{v}^*\|$ , therefore establishes that  $\psi$  is Lipschitz. To find such a  $K_2$ , notice that, for  $\mathbf{u}^*$  and  $\mathbf{v}^*$  in  $E^*$ , we have

$$\left| \frac{u_i^*}{v_i^*} - 1 \right| = \frac{|u_i^* - v_i^*|}{v_i^*} < 2\sqrt{p} \|\mathbf{u}^* - \mathbf{v}^*\|, \quad i = 1, \dots, p,$$

with the inequality holding as  $\mathbf{v}^* \in \Omega$ , so that  $v_i^* > \frac{1}{2\sqrt{p}}$  for all  $i$ . Hence, for each  $i$ ,

$$\frac{u_i^*}{v_i^*} < 1 + 2\sqrt{p} \|\mathbf{u}^* - \mathbf{v}^*\|.$$

As  $\mathbf{v} \gg \mathbf{u}$  is false, there is some  $j$  with  $u_j \geq v_j$ , and hence  $u_j^* \|\mathbf{u}\| = u_j \geq v_j = v_j^* \|\mathbf{v}\|$ . Thus

$$\frac{\|\mathbf{v}\|}{\|\mathbf{u}\|} \leq \frac{u_j^*}{v_j^*} < 1 + 2\sqrt{p} \|\mathbf{u}^* - \mathbf{v}^*\|, \tag{3.4}$$

so that

$$\begin{aligned} \|\mathbf{v}\| &< \|\mathbf{u}\| + 2\sqrt{p} \|\mathbf{u}\| \|\mathbf{u}^* - \mathbf{v}^*\| \\ &\leq \|\mathbf{u}\| + 2\sqrt{p} K_1 \|\mathbf{u}^* - \mathbf{v}^*\|. \end{aligned} \tag{3.5}$$

By symmetry between  $\mathbf{u}$  and  $\mathbf{v}$ , we also have

$$\|\mathbf{u}\| < \|\mathbf{v}\| + 2\sqrt{p} K_1 \|\mathbf{u}^* - \mathbf{v}^*\|; \tag{3.6}$$

so that

$$\left| \|\mathbf{u}\| - \|\mathbf{v}\| \right| < 2\sqrt{p} K_1 \|\mathbf{u}^* - \mathbf{v}^*\|,$$

and, with  $K_2 = 2\sqrt{p} K_1$ , the proof of Lemma 3.7 is complete.  $\square$

As Lemma 3.7 has established the Lipschitz mapping between  $E^*$  and  $E_{++}$ , Corollary 3.5 then establishes Lemma 3.6, for efficient sets in  $\mathbb{R}_{++}^p$ . We may therefore now return to this section's main theorem:

**Proof of Theorem 3.2 (Conclusion).** Any efficient set  $E \subset \mathbb{R}^p$  may be expressed as the countable union of bounded subsets,  $E_i : E = \bigcup_{i=1}^{\infty} E_i$ . By Lemma 1.2, each of the  $E_i$  is also efficient. The lemma also allows translation of each  $E_i$  into  $\mathbb{R}_{++}^p$  so that it satisfies the requirements of  $E_{++}$  in Lemma 3.7. Lemmas 3.6 and 3.7 then establish that  $\dim(E_i) \leq p - 1$ . Finally, as  $\dim \bigcup_{i=1}^{\infty} E_i = \sup_i \dim E_i$  (Mattila, 1995, p.59), the result holds for any efficient set in  $\mathbb{R}^p$ .  $\square$

#### 4. Pillage games and stable sets

We now present a non-trivial application of the above results, allowing us to establish both Jordan's conjecture that stable sets in pillage games have measure zero, and its more precise Hausdorff dimension interpretation.

Pillage games are cooperative games whose dominance operators are representable by power functions, increasing functions of both a coalition's membership and its resource holdings. Thus, they model power contests independently of game forms (which may themselves be contested) while allowing externalities between coalitions both for (intrinsic) reasons and as a result of (extrinsic) resource holdings. They form an uncountable, open set of games, which typically take the two best known classes of cooperative games (those in characteristic and partition function form) as boundary points. Jordan (2006) introduced one-good pillage games; multi-good pillage games, as defined below, were introduced by Rowat (2009).

Let there be  $m$  goods, each with unitary aggregate endowment, and a finite set  $I = \{1, \dots, n\}$  of agents, where  $n \geq 2$ . Agent  $i$  ranks allocations according to a continuous, strictly convex, strongly monotone preference relation  $\succsim_i$  defined on  $\mathbb{R}_+^m$ ; denote strict preference by  $>_i$  and indifference by  $\sim_i$ . Agent  $i$ 's allocation is  $\mathbf{x}_i = (x_{1i}, \dots, x_{mi})$ , where  $0 \leq x_{ji} \leq 1$  for each  $i$  and  $j$ . An allocation of the goods is a vector  $\mathbf{x} = (\mathbf{x}_1, \dots, \mathbf{x}_n)$ , and the set of allocations is

$$\begin{aligned} \mathcal{A} &= \left\{ (\mathbf{x}_1, \dots, \mathbf{x}_n) : \sum_i x_{1i} = \dots = \sum_i x_{mi} = 1, \right. \\ &\quad \left. 0 \leq x_{ji} \leq 1 \right\} \subset (\mathbb{R}^m)^n, \end{aligned}$$

which we identify in a natural way with a subset of  $\mathbb{R}^{mn}$ .

A coalition is any (possibly empty) set of agents (that is, a subset of  $I$ ). A coalition's power is given by a power function:

**Definition 4.1.** A power function is a function  $\pi : 2^I \times \mathcal{A} \rightarrow \mathbb{R}$  which, for all subsets  $C$  and  $C'$  of  $I$ , and all allocations  $\mathbf{x}$  and  $\mathbf{y}$ , satisfies

- (WC) if  $C' \supset C$  then  $\pi(C', \mathbf{x}) \geq \pi(C, \mathbf{x})$ ;
- (WR) if  $\mathbf{y}_i \geq \mathbf{x}_i$  when  $i \in C$ , then  $\pi(C, \mathbf{y}) \geq \pi(C, \mathbf{x})$ ;
- (SR) if  $C \neq \emptyset$ , and  $\mathbf{y}_i > \mathbf{x}_i$  when  $i \in C$ , then  $\pi(C, \mathbf{y}) > \pi(C, \mathbf{x})$ .

<sup>14</sup> The figure also includes the  $\delta$ -coverings previously mentioned. An alternative strategy for deriving a set's Hausdorff dimension to that pursued here is as follows. Letting  $\#$  denote a set's cardinality, if  $\#C(E, \delta) \times \delta^t$  is bounded by a finite constant as  $\delta \rightarrow 0$ , then  $\dim(E) = t$ .

These axioms – weak coalitional monotonicity, weak resource monotonicity, and strict resource monotonicity – extend those in Jordan (2006) from the one good to the  $m$ -good environment.<sup>15</sup> Given allocations  $\mathbf{x}$  and  $\mathbf{y}$ , we let  $C_{\mathbf{x}>\mathbf{y}}$  be the coalition of agents who strictly prefer  $\mathbf{x}$  to  $\mathbf{y}$ .<sup>16</sup>

**Definition 4.2.** An allocation  $\mathbf{y}$  dominates an allocation  $\mathbf{x}$ , written  $\mathbf{y} \mathcal{E} \mathbf{x}$ , if  $\pi(C_{\mathbf{y}>\mathbf{x}}, \mathbf{x}) > \pi(C_{\mathbf{x}>\mathbf{y}}, \mathbf{x})$  or, equivalently, if the coalition who strictly prefers  $\mathbf{y}$  to  $\mathbf{x}$  has more power with allocation  $\mathbf{x}$  than does the coalition who strictly prefers  $\mathbf{x}$  to  $\mathbf{y}$ .

**Definition 4.3.** Given allocations  $\mathbf{u}$  and  $\mathbf{v}$ , the associated balance of power locus is the set

$$B(\mathbf{u}, \mathbf{v}) = \{\mathbf{x} \in \mathcal{A} : \pi(C_{\mathbf{u}>\mathbf{v}}, \mathbf{x}) = \pi(C_{\mathbf{v}>\mathbf{u}}, \mathbf{x})\}.$$

When  $C_{\mathbf{u}>\mathbf{v}} = C_{\mathbf{v}>\mathbf{u}} = \emptyset$ ,  $B(\mathbf{u}, \mathbf{v}) = \mathcal{A}$ . The requirement that both  $C_{\mathbf{u}>\mathbf{v}}$  and  $C_{\mathbf{v}>\mathbf{u}}$  be empty is equivalent to  $\mathbf{u}_i \sim_i \mathbf{v}_i$  for all  $i \in I$ . The set of  $\mathbf{u}$  and  $\mathbf{v}$  satisfying this condition holds all agents to their indifference curves. Similarly, when  $C_{\mathbf{u}>\mathbf{v}} \neq \emptyset$  but  $C_{\mathbf{v}>\mathbf{u}} = \emptyset$ , a move from  $\mathbf{v}$  to  $\mathbf{u}$  is Pareto improving. As shall be seen in the proof of Theorem 4.7, this need not imply that  $\mathbf{u} \mathcal{E} \mathbf{v}$ .

See Jordan (2006) for a motivation of stable sets as the appropriate solution concept:

**Definition 4.4.** A set  $S \subseteq \mathcal{A}$  of allocations is

1. *internally stable* if no allocation in  $S$  dominates another allocation in  $S$ ;
2. *externally stable* if each  $\mathbf{y}$  in  $\mathcal{A} \setminus S$  is dominated by some  $\mathbf{x}$  in  $S$ ;
3. *stable* if it is both internally and externally stable.

The preceding and one more set of definitions will allow us to represent internally stable sets as subsets of more tractable objects:

**Definition 4.5.**

$$B^+(\mathbf{u}, \mathbf{v}) \equiv \{\mathbf{x} \in \mathcal{A} : \pi(C_{\mathbf{u}>\mathbf{v}}, \mathbf{x}) > \pi(C_{\mathbf{v}>\mathbf{u}}, \mathbf{x})\};$$

$$B^-(\mathbf{u}, \mathbf{v}) \equiv \{\mathbf{x} \in \mathcal{A} : \pi(C_{\mathbf{u}>\mathbf{v}}, \mathbf{x}) < \pi(C_{\mathbf{v}>\mathbf{u}}, \mathbf{x})\} = B^+(\mathbf{v}, \mathbf{u});$$

$$\mathcal{B} \equiv \{B(\mathbf{u}, \mathbf{v}) : \mathbf{u}, \mathbf{v} \in \mathcal{A}; C_{\mathbf{u}>\mathbf{v}}, C_{\mathbf{v}>\mathbf{u}} \neq \emptyset\};$$

$$\bar{\mathcal{B}} \equiv \{B(\mathbf{u}, \mathbf{v}) : \mathbf{u}, \mathbf{v} \in \mathcal{A}; C_{\mathbf{u}>\mathbf{v}} \cup C_{\mathbf{v}>\mathbf{u}} \neq \emptyset\}.$$

Thus,  $\mathcal{B}$  is the set of balance of power loci, excluding those generated when at least one of  $C_{\mathbf{u}>\mathbf{v}}$  or  $C_{\mathbf{v}>\mathbf{u}}$  is empty; its cardinality is  $3^n - 2^{n+1} + 1$  (Kerber and Rowat, 2011). Similarly,  $\bar{\mathcal{B}}$  is the set of balance of power loci for which no more than one of  $C_{\mathbf{u}>\mathbf{v}}$  and  $C_{\mathbf{v}>\mathbf{u}}$  is non-empty; its cardinality is  $3^n - 1$ .

It follows that no two allocations in an internally stable set can lie on the same side of the balance of power locus that they induce:

**Lemma 4.6.** An internally stable set cannot contain two allocations,  $\mathbf{u}, \mathbf{v} \in \mathcal{A}$ , such that either  $\mathbf{u}, \mathbf{v} \in B^+(\mathbf{u}, \mathbf{v})$  or  $\mathbf{u}, \mathbf{v} \in B^-(\mathbf{u}, \mathbf{v})$  for some  $B(\mathbf{u}, \mathbf{v})$  in  $\bar{\mathcal{B}}$ .

**Proof.** Suppose that a stable set  $S$  contains two allocations  $\mathbf{u}$  and  $\mathbf{v}$  that are in  $B^+(\mathbf{u}, \mathbf{v})$ . Then, by definition,  $\pi(C_{\mathbf{u}>\mathbf{v}}, \mathbf{v}) > \pi(C_{\mathbf{v}>\mathbf{u}}, \mathbf{v})$ , so that  $\mathbf{u}$  dominates  $\mathbf{v}$ . This is impossible, since  $\mathbf{u}$  and  $\mathbf{v}$  are in  $S$ , and  $S$  is stable. Similarly,  $S$  cannot contain two allocations  $\mathbf{u}$  and  $\mathbf{v}$  that are in  $B^+(\mathbf{v}, \mathbf{u})$ , which is  $B^-(\mathbf{u}, \mathbf{v})$ .  $\square$

<sup>15</sup> Axiom (WR) implies that  $\pi(\emptyset, \mathbf{x})$  is independent of  $\mathbf{x}$ , and that, from (WC), this common value is the smallest value taken by  $\pi$ . This motivates the assumption that  $C \neq \emptyset$  in (SR). Yet  $\pi(C, \mathbf{x}) = \pi(\emptyset, \mathbf{x})$  does not imply that  $C = \emptyset$ : under the *wealth is power* function, the leading example in Jordan (2006), a coalition's power is the aggregate quantity of the single good held by its members; if every  $i \in C$  holds zero quantities of the good, then  $\pi(C, \mathbf{x}) = \pi(\emptyset, \mathbf{x})$ .

<sup>16</sup> In Jordan (2006), the sets  $C_{\mathbf{x}>\mathbf{y}}$  and  $C_{\mathbf{y}>\mathbf{x}}$  are identified as  $W$  and  $L$ .

In the one-good world, the lemma implies the basis for the result that stable sets are finite (Jordan, 2006): no stable set can contain a sequence of four allocations,  $\mathbf{x}^1, \dots, \mathbf{x}^4$  over which one coalition of agents always prefers  $\mathbf{x}^{k+1}$  to  $\mathbf{x}^k$  and an opposing, disjoint coalition always prefers the reverse.

This allows us to establish the representation of an internally stable set:

**Theorem 4.7.** Any internally stable set,  $S$ , is a subset of the union of a finite number of each of: balance of power loci, isolated allocations, and allocations over which all agents are indifferent.

**Proof.** Index the balance of power loci in  $\bar{\mathcal{B}}$  by  $j = 1, \dots, \|\bar{\mathcal{B}}\|$ . Any  $\mathbf{x} \in \mathcal{A}$  may be located relative to the balance of power locus induced by  $\mathbf{u}^j, \mathbf{v}^j$  as follows:

$$\mathbf{x} \in \left\{ \begin{array}{l} B^-(\mathbf{u}^j, \mathbf{v}^j) \\ B(\mathbf{u}^j, \mathbf{v}^j) \\ B^+(\mathbf{u}^j, \mathbf{v}^j) \end{array} \right\} \Rightarrow \beta_j(\mathbf{x}) = \left\{ \begin{array}{l} -1 \\ 0 \\ 1 \end{array} \right\}.$$

Case 1: if  $\beta_j(\mathbf{x}) = 0$  for some  $\mathbf{x}$  in  $S$  and  $j$  in  $\{1, \dots, \|\bar{\mathcal{B}}\|\}$ , then  $\mathbf{x}$  belongs to one of the  $3^n - 1$  balance of power loci in  $\bar{\mathcal{B}}$ , consistent with the theorem.

Case 2: now consider those  $\mathbf{x}$  in  $S$  for which  $\beta_j(\mathbf{x}) \neq 0$  for all  $j$  in  $\{1, \dots, \|\bar{\mathcal{B}}\|\}$ . Thus,  $(\beta_1(\mathbf{x}), \dots, \beta_{\|\bar{\mathcal{B}}\|}(\mathbf{x}))$  takes on one of  $2^{3^n-1}$  values, a finite number. By Lemma 4.6, there cannot also be a  $\mathbf{y}$  in  $S$  such that  $\beta_j(\mathbf{y}) = \beta_j(\mathbf{x})$  for all  $j$  in  $\{1, \dots, \|\bar{\mathcal{B}}\|\}$ ; were there, one of  $\mathbf{x}$  and  $\mathbf{y}$  would dominate the other, violating internal stability. Thus, there are at most  $2^{3^n-1}$  allocations that do not lie on one of the balance of power loci in  $\bar{\mathcal{B}}$ , consistent with the theorem.

Case 3: the last case to consider is that when  $\mathbf{x}$  and  $\mathbf{y}$  in  $S$  are such that both the sets  $C_{\mathbf{x}>\mathbf{y}}$  and  $C_{\mathbf{y}>\mathbf{x}}$  are empty. In this case,  $\mathbf{x} \sim_i \mathbf{y}$  for all  $i$  in  $I$ , the indifference loci in the theorem's statement. Suppose that there exists a second pair,  $\mathbf{x}'$  and  $\mathbf{y}'$  in  $S$ , such that  $\mathbf{x}' \sim_i \mathbf{y}'$  for all  $i$  in  $I$ . To show that only finitely many such indifference intersections arise, consider two further subcases:

Case 3a: if  $\mathbf{x} \sim_i \mathbf{x}' \sim_i \mathbf{y}' \sim_i \mathbf{y}$  for all  $i$  in  $I$  then  $\mathbf{x}'$  and  $\mathbf{y}'$  lie on the same intersection of indifference loci, consistent with the theorem.

Case 3b: otherwise, without loss of generality, there exists at least one agent  $i$  in  $I$  for whom  $\mathbf{x} \sim_i \mathbf{x}'$ , so that at least one of  $C_{\mathbf{x}>\mathbf{x}'}$  and  $C_{\mathbf{x}'>\mathbf{x}}$  is non-empty. Then, for each of  $\mathbf{x}$  and  $\mathbf{x}'$ , if there exists a  $j$  in  $\{1, \dots, \|\bar{\mathcal{B}}\|\}$  such that  $\beta_j(\mathbf{x})$  or  $\beta_j(\mathbf{x}')$  equals zero, case 1, above, applies. Otherwise case 2 applies, and we are done.  $\square$

Thus, Jordan's conjecture can be settled if the elements identified by the theorem can be bounded: the isolated allocations, as countable sets, have measure and dimension zero; Theorems 2.1 and 3.2 bound the indifferent allocations; the balance of power loci have not yet been bounded. Before bounding them, thus settling the conjecture, note that they belong to a measure zero subset of allocation space,  $\mathcal{A} \subset \mathbb{R}^{mn}$ , but the natural domain of Jordan's conjecture is what we shall define as Edgeworth space,  $\mathcal{E} \subset \mathbb{R}^{m(n-1)}$ . As these two spaces are different, Theorems 2.1 and 3.2 cannot be immediately applied to bound balance of power loci. We therefore first show that  $\mathcal{E}$  can be identified with  $\mathcal{A}$  in such a way that null sets in one of these spaces correspond to null sets in the other.

Before proceeding, we fix concepts in the familiar two-good two-agent Edgeworth box. Here the allocation space lies in  $\mathbb{R}^4$ , but the Edgeworth box lies in  $\mathbb{R}^2$ . It was Pareto (1906) who made the appealing geometric observation that each point in the unit square  $[0, 1]^2$  in  $\mathbb{R}^2$  represents the allocation to the first agent, and the co-ordinates of this same point relative to a new origin taken at  $(1, 1)$  (and all co-ordinate directions reversed) give the allocation to the second agent. The essential feature is that the Edgeworth box lies in a lower dimensional space than does the set of allocations.

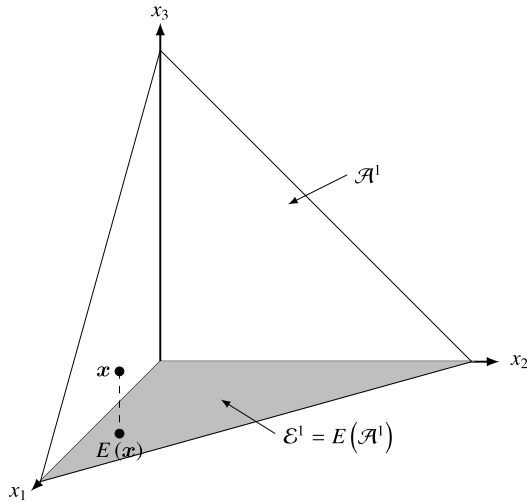


Fig. 5. The Edgeworth map,  $E$ , for a single good when  $n = 3$ .

To proceed beyond this dominant case, consider the special case in which a unit endowment of a single good is shared between the agents in  $I$ . Then the allocation space reduces to

$$\mathcal{A}^1 = \{(x_1, \dots, x_n) \in \mathbb{R}^n : x_j \geq 0, x_1 + \dots + x_n = 1\}, \quad (4.1)$$

where  $x_j$  is the allocation to agent  $j$ . As  $x_n$  is completely determined by the other allocations via  $x_n = 1 - (x_1 + \dots + x_{n-1})$ , it is sufficient to consider the corresponding Edgeworth space

$$\mathcal{E}^1 = \{(x_1, \dots, x_{n-1}) \in \mathbb{R}^{n-1} : x_1, \dots, x_{n-1} \geq 0, x_1 + \dots + x_{n-1} \leq 1\}. \quad (4.2)$$

Thus  $\mathcal{E}^1 \subset \mathbb{R}^{n-1}$  whereas  $\mathcal{A}^1 \subset \mathbb{R}^n$ . However, it is convenient to embed  $\mathbb{R}^{n-1}$  in  $\mathbb{R}^n$  by identifying it with the subset  $\{x_n = 0\}$ , yielding

$$\mathcal{E}^1 = \{(x_1, \dots, x_{n-1}, 0) \in \mathbb{R}^n : x_1, \dots, x_{n-1} \geq 0, x_1 + \dots + x_{n-1} \leq 1\}.$$

In these circumstances, the Edgeworth map,  $E$ , is the vertical projection map of  $\mathbb{R}^n$  onto  $\mathbb{R}^{n-1} \times \{0\}$  given by  $E(x_1, \dots, x_n) = (x_1, \dots, x_{n-1}, 0)$ . Thus,  $E$  maps  $\mathcal{A}^1$  bijectively onto  $\mathcal{E}^1$ .

The case of  $n = 3$  is illustrated in Fig. 5. In this case,  $\mathcal{A}^1$  is the triangle in  $\mathbb{R}^3$  with vertices  $(1, 0, 0)$ ,  $(0, 1, 0)$  and  $(0, 0, 1)$ , and  $\mathcal{E}^1$  is the triangle in  $\mathbb{R}^2$  with vertices  $(0, 0)$ ,  $(0, 1)$  and  $(1, 0)$ . If we identify  $\mathcal{E}^1$  with a subset of the plane  $x_3 = 0$ , then we can regard  $\mathcal{E}^1$  as the triangle in  $\mathbb{R}^3$  with vertices  $(0, 0, 0)$ ,  $(0, 1, 0)$  and  $(1, 0, 0)$ , and  $\mathcal{A}^1$  projects vertically downwards onto  $\mathcal{E}^1$ .

This reasoning extends to the case of  $n$  agents and  $m$  goods, each with unit aggregate. The allocation and Edgeworth spaces are now the spaces

$$\begin{aligned} \mathcal{A} &\equiv \mathcal{A}^1 \times \dots \times \mathcal{A}^1 \subset \mathbb{R}^{mn}, \\ \mathcal{E} &\equiv \mathcal{E}^1 \times \dots \times \mathcal{E}^1 \subset \mathbb{R}^{m(n-1)}, \end{aligned} \quad (4.3)$$

respectively, where each product has  $m$  factors. As above, we can identify  $\mathcal{E}$  with a subset of  $\mathbb{R}^{mn}$  in which  $n$  of the co-ordinates are zero. Then:

**Definition 4.8.** The Edgeworth map  $E$  of  $\mathcal{A}$  onto  $\mathcal{E}$  is the map obtained by applying the map  $E$  to each factor of  $\mathcal{A}$ .

**Theorem 4.9.** The Edgeworth map  $E$  of  $\mathcal{A}$  onto  $\mathcal{E}$  satisfies

$$\|E(\mathbf{x}) - E(\mathbf{y})\| \leq \|\mathbf{x} - \mathbf{y}\| \leq 2mn \|E(\mathbf{x}) - E(\mathbf{y})\|. \quad (4.4)$$

**Proof.** Since

$$\begin{aligned} E(\mathbf{x}_1, \dots, \mathbf{x}_m) &= ((x_{1,1}, \dots, x_{1,n-1}), \dots, \\ &\quad (x_{m,1}, \dots, x_{m,n-1})); \\ (\mathbf{x}_1, \dots, \mathbf{x}_m) &= ((x_{1,1}, \dots, x_{1,n-1}, x_{1,n}), \dots, \\ &\quad (x_{m,1}, \dots, x_{m,n-1}, x_{m,n})); \end{aligned}$$

the first inequality in (4.4) is clear.

To verify the second inequality, recall that  $x_{j,n} = 1 - (x_{j,1} + \dots + x_{j,n-1})$ . Further, for all  $\mathbf{u}$  and  $\mathbf{v}$  in  $\mathbb{R}^p$ ,  $\|\mathbf{u} - \mathbf{v}\|_1 \leq p \|\mathbf{u} - \mathbf{v}\| \leq p \|\mathbf{u} - \mathbf{v}\|_1$ , where  $\|\cdot\|_1$  is the taxicab metric,

$$\|\mathbf{u} - \mathbf{v}\|_1 \equiv \sum_{j=1}^p |u_j - v_j|.$$

Thus,

$$\begin{aligned} \|\mathbf{x} - \mathbf{y}\| &\equiv \sqrt{\sum_{j=1}^m \sum_{i=1}^n (x_{j,i} - y_{j,i})^2} \\ &\leq \|\mathbf{x} - \mathbf{y}\|_1 \\ &\equiv \sum_{j=1}^m \sum_{i=1}^n |x_{j,i} - y_{j,i}| \\ &= \|E(\mathbf{x}) - E(\mathbf{y})\|_1 + \sum_{j=1}^m |x_{j,n} - y_{j,n}| \\ &\leq \|E(\mathbf{x}) - E(\mathbf{y})\|_1 + \sum_{j=1}^m \sum_{i=1}^{n-1} |x_{j,i} - y_{j,i}| \\ &= 2\|E(\mathbf{x}) - E(\mathbf{y})\|_1 \\ &\leq 2mn \|E(\mathbf{x}) - E(\mathbf{y})\|. \quad \square \end{aligned}$$

The theorem thus establishes that the Edgeworth map  $E$  is bi-Lipschitz, so that null sets in  $\mathcal{A}$  correspond to null sets in  $\mathcal{E}$ , and conversely. We may now resolve the question of bounding balance of power loci:

**Lemma 4.10.** Given  $\mathbf{u}$  and  $\mathbf{v}$  in  $\mathcal{A}$ , the balance of power locus  $B(\mathbf{u}, \mathbf{v})$  has  $m(n-1)$ -dimensional measure zero.

Even with Theorem 4.9, Theorem 2.1 cannot yet be directly applied as the aggregate endowment constraint prevents  $\mathbf{x} \gg \mathbf{y}$  for any allocations  $\mathbf{x}$  and  $\mathbf{y}$ . The proof therefore relies on a measure-preserving orthogonal map.

**Proof.** Take three allocations  $\mathbf{u}, \mathbf{v}$  and  $\mathbf{x}$  in  $\mathcal{A} \subset \mathbb{R}^{mn}$  with  $\mathbf{x} = (x_1, \dots, x_n)$  such that  $\mathbf{x}_i = (x_{1i}, \dots, x_{mi}) \in \mathbb{R}^m$ . Now define a map  $\sigma : \mathbb{R}^{mn} \rightarrow \mathbb{R}^{mn}$  by

$$\sigma(\mathbf{x}_1, \dots, \mathbf{x}_n : \mathbf{u}, \mathbf{v}) \equiv (\hat{\mathbf{x}}_1, \dots, \hat{\mathbf{x}}_n),$$

where

$$\hat{\mathbf{x}}_i \equiv \begin{cases} \mathbf{x}_i & \text{if } i \in C_{\mathbf{v} > \mathbf{u}} \\ -\mathbf{x}_i & \text{if } i \notin C_{\mathbf{v} > \mathbf{u}}. \end{cases}$$

Obviously  $\sigma$  depends parametrically on  $\mathbf{u}$  and  $\mathbf{v}$ ; for simplicity, we omit this dependence in the notation.

We now establish that  $\sigma(B(\mathbf{u}, \mathbf{v}))$  is an efficient set in  $\mathbb{R}^{mn}$  (although not in the positive orthant). Were it otherwise, there would exist allocations  $\mathbf{x}$  and  $\mathbf{y}$  in  $B(\mathbf{u}, \mathbf{v})$  such that  $\sigma(\mathbf{x}) \gg \sigma(\mathbf{y})$ . In turn, as this sets  $\mathbf{x}_i \gg \mathbf{y}_i$  for all  $i \in C_{\mathbf{v} > \mathbf{u}}$  and  $\mathbf{y}_i \gg \mathbf{x}_i$  for all other agents, SR implies

$$\pi(C_{\mathbf{v} > \mathbf{u}}, \mathbf{x}) > \pi(C_{\mathbf{v} > \mathbf{u}}, \mathbf{y}) = \pi(C_{\mathbf{u} > \mathbf{v}}, \mathbf{y}) > \pi(C_{\mathbf{u} > \mathbf{v}}, \mathbf{x}); \quad (4.5)$$

so that  $\mathbf{x} \notin B(\mathbf{u}, \mathbf{v})$ , a contradiction proving that  $\sigma(B(\mathbf{u}, \mathbf{v}))$  is an efficient set.



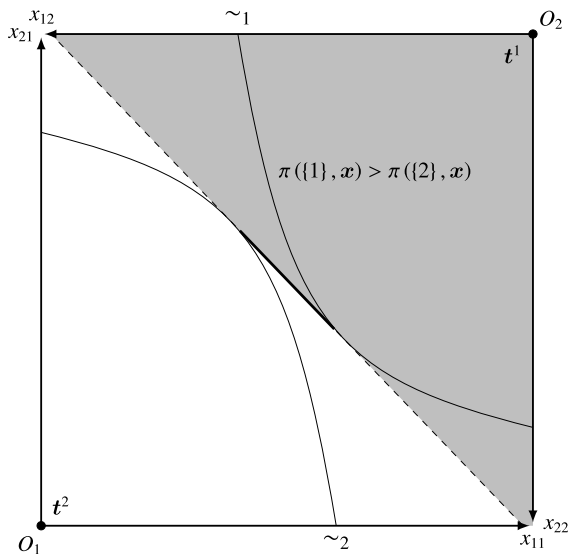


Fig. 6. An internally stable set in  $\mathcal{E}^1 \times \mathcal{E}^1$  with  $n = 2$ .

By Theorem 2.1,  $\mu_{mn}(\sigma(B(\mathbf{u}, \mathbf{v}))) = 0$ . By Theorem 4.9, its projection into the Edgeworth space is also null,  $\mu_{m(n-1)}(\mathbf{E}(\sigma(B(\mathbf{u}, \mathbf{v})))) = 0$ . As  $\sigma$  is an orthogonal map, it preserves Euclidean distances, and therefore measures. This completes the proof.  $\square$

The preceding establishes Jordan's conjecture:

**Theorem 4.11.** *A stable set,  $S$  in  $\mathcal{A}$  has  $m(n-1)$ -dimensional measure zero.*

Appealing to Theorem 3.2 instead of Theorem 2.1 bounds the Hausdorff dimension of balance of power loci, establishing a stronger and more natural interpretation of Jordan's conjecture:

**Theorem 4.12.** *A stable set,  $S$ , in  $\mathcal{A}$  has dimension less than or equal to  $m(n-1) - 1$ .*

We conclude by illustrating the preceding arguments in a two-good, two-agent Edgeworth box, depicted in Fig. 6. The power function is an extension of Jordan's *wealth is power* function,  $\pi_W(C, \mathbf{x}) \equiv \sum_{i \in C} [\alpha x_{1i} + (1-\alpha)x_{2i}]$  for some  $\alpha \in (0, 1)$ .<sup>17</sup> The dashed line denotes the balance of power locus,  $B(\mathbf{t}^1, \mathbf{t}^2)$ , where  $\mathbf{t}^i$  is agent  $i$ 's *tyrannical* allocation, granting it the whole endowment. By SR, agent 1 is strictly more powerful than agent 2 for allocations to its northeast, and vice versa. The indifference curve for each agent tangent to the balance of power locus is labeled as  $\sim_i$ . The interval of allocations lying between the two tangencies forms an internally stable set as, for any  $\mathbf{x}$  and  $\mathbf{y}$  along that locus, agents 1 and 2 are opposed in interests, but equally powerful. Adding  $\{\mathbf{t}^1, \mathbf{t}^2\}$  to this set leaves it internally stable, while making it externally stable as well. Consistent with Theorem 4.7, it is a subset of a balance of power locus,  $B(\mathbf{t}^1, \mathbf{t}^2)$ , and the isolated tyrannical allocations; it has zero area, and is a curve of Hausdorff dimension one, a stronger claim.

This example illustrates both the finite bound on stable sets in the one-good world (Jordan, 2006), and how it must be modified for multiple goods. Simulate a single good by considering only

allocations ordered by  $\gg$  for agent  $i$ . Then, an internally stable set may contain a sequence of three allocations,  $\mathbf{t}_1^1 \gg \mathbf{y}_1 \gg \mathbf{t}_1^2$ , where  $\mathbf{y} \in B(\mathbf{t}^1, \mathbf{t}^2)$  lies between the tangencies; Lemma 4.6 prevents addition of a fourth ordered allocation to a stable set. However, with two goods, an internally stable, infinite sequence  $\mathbf{x}^k$  for  $k = 1, \dots$  such that agent 1 prefers each  $\mathbf{x}^{k+1}$  to each  $\mathbf{x}^k$ , and agent 2 the reverse, can be constructed by using allocations in the interval of the balance of power locus. Intuitively, multiple goods break the monotonicity in Jordan (2006) between utility and power, maintaining stability by holding the middle allocation of Jordan's sequence fixed in power space, while 'stretching' it in utility space.

## References

- Aliprantis, C.D., Burkinshaw, O., 1981. Principles of Real Analysis. Elsevier.
- Arrow, K.J., Hahn, F.H., 1971. General Competitive Analysis. Holden-Day and Oliver & Boyd.
- Beardon, A.F., 1965. On the Hausdorff dimension of general Cantor sets. Proceedings of the Cambridge Philosophical Society 61, 679–694.
- Beardon, A.F., 1995. Quasi-indifference classes in utility theory. Economic Theory 6 (3), 529–534.
- Candeal, J.C., Induráin, E., 1994. Medida de Lebesgue de las clases de indiferencia de ciertos preórdenes. Cuadernos Aragoneses de Economía 4 (2), 345–350.
- Debreu, G., 1970. Economies with a finite set of equilibria. Econometrica 38 (3), 387–392.
- Debreu, G., 1972. Smooth preferences. Econometrica 40 (4), 603–615.
- Debreu, G., 1976. Smooth preferences: a corrigendum. Econometrica 44 (4), 831–832.
- Diewert, W.E., 1973. Afriat and revealed preference theory. Review of Economic Studies 40 (3), 419–425.
- Edlin, A.S., Shannon, C., 1998. Strict single-crossing and the strict Spence-Mirrlees condition: a comment on monotone comparative statics. Econometrica 66 (6), 1417–1425.
- Epstein, M., Śniatycki, J., 2008. The Koch curve as a smooth manifold. Chaos, Solitons and Fractals 38 (2), 334–338.
- Falconer, K.J., 1990. Fractal Geometry: Mathematical Foundations and Applications. John Wiley & Sons.
- Gelbaum, B.R., Olmsted, J.M.H., 1962. Counterexamples in Analysis. Holden-Day, San Francisco.
- Hunt, B.R., Sauer, T., Yorke, J.A., 1992. Prevalence: a translation-invariant "almost every" on infinite-dimensional spaces. Bulletin of the American Mathematical Society (N.S. 27 (2)), 217–238.
- Hurewicz, W., Wallman, H., 1941. Dimension Theory. Princeton University Press.
- Jordan, J.S., 2006. Pillage and property. Journal of Economic Theory 131 (1), 26–44.
- Jordan, J.S., Xu, D., 1999. On the communication complexity of expected-profit maximisation. Journal of Economic Theory 86 (2), 185–202.
- Jouini, E., 1988. A remark on Clarke's normal cone and the marginal cost pricing rule. Journal of Mathematical Economics 17 (2–3), 309–315.
- Kehoe, T.J., Levine, D.K., Prescott, E.C., 2002. Lotteries, sunspots and incentive constraints. Journal of Economic Theory 107 (1), 39–69.
- Kerber, M., Rowat, C., 2011. A Ramsey bound on stable sets in Jordan pillage games. International Journal of Game Theory 40 (3), 461–466.
- Mas-Colell, A., 1985. The Theory of General Economic Equilibrium: A Differentiable Approach. In: Econometric Society Monographs, vol. 9. Cambridge University Press.
- Mas-Colell, A., Whinston, M.D., Green, J., 1995. Microeconomic Theory. Oxford University Press.
- Mattila, P., 1995. Geometry of Sets and Measures in Euclidean Spaces. In: Cambridge Studies in Advanced Mathematics, vol. 44. Cambridge University Press.
- Mehta, G., 1991. The Euclidean distance approach to continuous utility functions. Quarterly Journal of Economics 106 (3), 975–977.
- Nisan, N., Segal, I., 2006. The communication requirements of efficient allocations and supporting prices. Journal of Economic Theory 129 (1), 192–224.
- Pareto, V., 1906. Manuale di Economia Politica Con una Introduzione Alla Scienza Sociale. Società Editrice Libreria, Milan.
- Rowat, C., 2009. An exchange economy with pillage. Mimeo, June.
- Royden, H.L., 1988. Real Analysis, third ed. Prentice Hall.
- Saxton, D., 2011. Strictly monotonic multidimensional sequences and stable sets in pillage games. Journal of Combinatorial Theory, Series A 118 (2), 510–524.

<sup>17</sup> See Rowat (2009) for a more detailed presentation. The power function depicted sets  $\alpha > \frac{1}{2}$ .