

Mediterranean-style diet in pregnant women with metabolic risk factors (ESTEEM)

ESTEEM study group; Al Wattar, Bassel H; Dodds, Julie; Placzek, Anna; Beresford, Lee; Spyreli, Eleni ; Moore, Amanda ; Gonzalez Carreras, Francisco J. ; Austin, Frances ; Murugesu, Nilaani; Roseboom, Tessa J.; Bes-Rastrollo, Maira ; Hitman, Graham A. ; Hooper, Richard; Khan, Khalid S ; Thangaratinam, Shakila

DOI:

[10.1371/journal.pmed.1002857](https://doi.org/10.1371/journal.pmed.1002857)

License:

Creative Commons: Attribution (CC BY)

Document Version

Publisher's PDF, also known as Version of record

Citation for published version (Harvard):

ESTEEM study group, Al Wattar, BH, Dodds, J, Placzek, A, Beresford, L, Spyreli, E, Moore, A, Gonzalez Carreras, FJ, Austin, F, Murugesu, N, Roseboom, TJ, Bes-Rastrollo, M, Hitman, GA, Hooper, R, Khan, KS & Thangaratinam, S 2019, 'Mediterranean-style diet in pregnant women with metabolic risk factors (ESTEEM): a pragmatic multicentre randomised trial', *PLoS Medicine*, vol. 16, no. 7, e1002857. <https://doi.org/10.1371/journal.pmed.1002857>

[Link to publication on Research at Birmingham portal](#)

Publisher Rights Statement:

© 2019 H. Al Wattar et al.

General rights

Unless a licence is specified above, all rights (including copyright and moral rights) in this document are retained by the authors and/or the copyright holders. The express permission of the copyright holder must be obtained for any use of this material other than for purposes permitted by law.

- Users may freely distribute the URL that is used to identify this publication.
- Users may download and/or print one copy of the publication from the University of Birmingham research portal for the purpose of private study or non-commercial research.
- User may use extracts from the document in line with the concept of 'fair dealing' under the Copyright, Designs and Patents Act 1988 (?)
- Users may not further distribute the material nor use it for the purposes of commercial gain.

Where a licence is displayed above, please note the terms and conditions of the licence govern your use of this document.

When citing, please reference the published version.

Take down policy

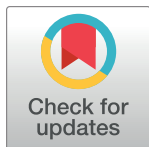
While the University of Birmingham exercises care and attention in making items available there are rare occasions when an item has been uploaded in error or has been deemed to be commercially or otherwise sensitive.

If you believe that this is the case for this document, please contact UBIRA@lists.bham.ac.uk providing details and we will remove access to the work immediately and investigate.

RESEARCH ARTICLE

Mediterranean-style diet in pregnant women with metabolic risk factors (ESTEEM): A pragmatic multicentre randomised trial

Bassel H. Al Wattar^{1,2}, **Julie Dodds**¹, **Anna Placzek**¹, **Lee Beresford**³, **Eleni Spyrelli**¹, **Amanda Moore**⁴, **Francisco J. Gonzalez Carreras**¹, **Frances Austin**⁵, **Nilaani Murugesu**¹, **Tessa J. Roseboom**^{6,7}, **Maira Bes-Rastrollo**^{8,9,10}, **Graham A. Hitman**¹¹, **Richard Hooper**³, **Khalid S. Khan**^{1,12}, **Shakila Thangaratinam**^{1,12*}, for the ESTEEM study group[†]



OPEN ACCESS

Citation: H. Al Wattar B, Dodds J, Placzek A, Beresford L, Spyrelli E, Moore A, et al. (2019) Mediterranean-style diet in pregnant women with metabolic risk factors (ESTEEM): A pragmatic multicentre randomised trial. *PLoS Med* 16(7): e1002857. <https://doi.org/10.1371/journal.pmed.1002857>

Academic Editor: Lars Åke Persson, London School of Hygiene and Tropical Medicine, UNITED KINGDOM

Received: February 13, 2019

Accepted: June 19, 2019

Published: July 23, 2019

Copyright: © 2019 H. Al Wattar et al. This is an open access article distributed under the terms of the [Creative Commons Attribution License](https://creativecommons.org/licenses/by/4.0/), which permits unrestricted use, distribution, and reproduction in any medium, provided the original author and source are credited.

Data Availability Statement: Data is available upon request to the Chief Investigator and the PCTU Data Sharing Committee (for more information see <https://www.qmul.ac.uk/pctu/collaborate-with-us/data-sharing/>).

Funding: The trial was funded by Barts Charity (<https://bartscharity.org.uk/>) to S.T and K.S.K (No 212563). The California Walnut Commission (<https://walnuts.org/>) and Blue Diamond Growers

1 BARC (Barts Research Centre for Women's Health), Women's Health Research Unit, Blizard Institute, Barts and the London School of Medicine and Dentistry, Queen Mary University of London, London, United Kingdom, **2** Warwick Medical School, University of Warwick, Coventry, United Kingdom, **3** Pragmatic Clinical Trials Unit, Blizard Institute, Barts and the London School of Medicine and Dentistry, Queen Mary University of London, London, United Kingdom, **4** Diabetes & Nutritional Sciences Division, Faculty of Life Sciences & Medicine, King's College, London, United Kingdom, **5** Maternity Dietetic Service, Women's and Children's Services, Barts NHS Trust, London, United Kingdom, **6** Department of Clinical Epidemiology, Biostatistics and Bioinformatics, Academic Medical Center, Amsterdam, the Netherlands, **7** Department of Obstetrics and Gynaecology, Academic Medical Center, Amsterdam, the Netherlands, **8** Department of Preventive Medicine and Public Health, University of Navarra, Pamplona, Spain, **9** CIBERObn, Instituto de Salud Carlos III, Madrid, Spain, **10** IDISNA, Navarra Institute for Health Research, Pamplona, Spain, **11** Barts Diabetes and Obesity Research Group, Blizard Institute, Barts and the London School of Medicine and Dentistry, Queen Mary University of London, London, United Kingdom, **12** Multidisciplinary Evidence Synthesis Hub (mEsh), Blizard Institute, Barts and the London School of Medicine, Queen Mary University London, London, United Kingdom

[†] Membership of the ESTEEM study group is provided in the Acknowledgments.

* s.thangaratinam@qmul.ac.uk

Abstract

Background

Pregnant women with metabolic risk factors are at high risk of complications. We aimed to assess whether a Mediterranean-style diet reduces adverse pregnancy outcomes in high-risk women.

Methods and findings

We conducted a multicentre randomised trial in 5 maternity units (4 in London and 1 in Birmingham) between 12 September 2014 and 29 February 2016. We randomised inner-city pregnant women with metabolic risk factors (obesity, chronic hypertension, or hypertriglyceridaemia) to a Mediterranean-style diet with high intake of nuts, extra virgin olive oil, fruits, vegetables, nonrefined grains, and legumes; moderate to high consumption of fish; low to moderate intake of poultry and dairy products; low intake of red and processed meat; and avoidance of sugary drinks, fast food, and food rich in animal fat versus usual care. Participants received individualised dietary advice at 18, 20, and 28 weeks' gestation. The primary endpoints were composite maternal (gestational diabetes or preeclampsia) and composite

(<https://www.bluediamondalmonds.co.uk/>)

donated Walnuts and Almonds respectively. None of the funders had any role in the design, analysis, decision to publish, or preparation of the findings of this trial.

Competing interests: The authors have declared that no competing interests exist.

Abbreviations: aOR, adjusted odds ratio; APEC, Action on Preeclampsia Charity; BMI, body mass index; BP, blood pressure; CI, confidence interval; DASH, Dietary Approaches to Stop Hypertension; DMC, Data Monitoring Committee; ESTEEM, Effect of Simple, Targeted Diet in Pregnant Women With Metabolic Risk Factors on Pregnancy Outcomes; ESTEEM Q, ESTEEM questionnaire; FFQ, Food Frequency Questionnaire; HDL, high-density lipoprotein; HDU, high dependency unit; IADPSG, International Association of Diabetes and Pregnancy Study Group; ICC, intraclass correlation coefficient; IPAQ, International Physical Activity Questionnaires; IPD, individual participant data; ITT, intention-to-treat; ITU, intensive treatment unit; MD, mean difference; MET, metabolic equivalent of task; non-HDL, non-high-density lipoprotein; OGTT, oral glucose tolerance test; OR, odds ratio; PCR, protein creatinine ratio; TSC, Trial Steering Committee.

offspring (stillbirth, small for gestational age, or admission to neonatal care unit) outcomes prioritised by a Delphi survey. We used an intention-to-treat (ITT) analysis with multivariable models and identified the stratification variables and prognostic factors a priori.

We screened 7,950 and randomised 1,252 women. Baseline data were available for 593 women in the intervention (93.3% follow-up, 553/593) and 612 in the control (95.6% follow-up, 585/612) groups. Over a quarter of randomised women were primigravida (330/1,205; 27%), 60% (729/1,205) were of Black or Asian ethnicity, and 69% (836/1,205) were obese. Women in the intervention arm consumed more nuts (70.1% versus 22.9%; adjusted odds ratio [aOR] 6.8, 95% confidence interval [CI] 4.3–10.6, $p \leq 0.001$) and extra virgin olive oil (93.2% versus 49.0%; aOR 32.2, 95% CI 16.0–64.6, $p \leq 0.001$) than controls; increased their intake of fish ($p < 0.001$), white meat ($p < 0.001$), and pulses ($p = 0.05$); and reduced their intake of red meat ($p < 0.001$), butter, margarine, and cream ($p < 0.001$). There was no significant reduction in the composite maternal (22.8% versus 28.6%; aOR 0.76, 95% CI 0.56–1.03, $p = 0.08$) or composite offspring (17.3% versus 20.9%; aOR 0.79, 95% CI 0.58–1.08, $p = 0.14$) outcomes. There was an apparent reduction in the odds of gestational diabetes by 35% (aOR 0.65, 95% CI 0.47–0.91, $p = 0.01$) but not in other individual components of the composite outcomes. Mothers gained less gestational weight (mean 6.8 versus 8.3 kg; adjusted difference -1.2 Kg, 95% CI -2.2 to -0.2 , $p = 0.03$) with intervention versus control. There was no difference in any of the other maternal and offspring complications between both groups. When we pooled findings from the Effect of Simple, Targeted Diet in Pregnant Women With Metabolic Risk Factors on Pregnancy Outcomes (ESTEEM) trial with similar trials using random effects meta-analysis, we observed a significant reduction in gestational diabetes (odds ratio [OR] 0.67, 95% CI 0.53–0.84, $I^2 = 0\%$), with no heterogeneity (2 trials, 2,397 women). The study's limitations include the use of participant reported tools for adherence to the intervention instead of objective biomarkers.

Conclusions

A simple, individualised, Mediterranean-style diet in pregnancy did not reduce the overall risk of adverse maternal and offspring complications but has the potential to reduce gestational weight gain and the risk of gestational diabetes.

Trial registration

ClinicalTrials.gov [NCT02218931](https://clinicaltrials.gov/ct2/show/study/NCT02218931).

Author summary

Why was this study done?

- A Mediterranean-style diet reduced the risk of type 2 diabetes and cardiovascular complications in randomised trials involving the general population with risk factors.
- To date, no trial has evaluated the effects of a Mediterranean-style diet in pregnancy on maternal and offspring outcomes.

What did the researchers do and find?

- In the Effect of Simple, Targeted Diet in Pregnant Women With Metabolic Risk Factors on Pregnancy Outcomes (ESTEEM) study, 1,252 pregnant women with metabolic risk factors from 5 inner-city United Kingdom hospitals were randomly allocated to follow a Mediterranean-style diet (supplemented with mixed nuts and extra virgin olive oil) or routine antenatal care, and the overall maternal (gestational diabetes or preeclampsia) and offspring outcomes (small-for-gestational age, stillbirth, or admission to the neonatal care unit) were assessed.
- Pregnant women allocated to the Mediterranean-style diet increased their intake of key components of this diet and gained on average 1.25 kg less weight than those who had routine care.
- There were no statistically significant reductions in overall maternal and offspring complications in pregnant women who followed a Mediterranean diet compared with usual care. Of the individual outcomes, the risk of gestational diabetes apparently decreased by 35% with the intervention.
- A meta-analysis of ESTEEM study results with a similar trial showed a 33% reduction in gestational diabetes but no effect on other outcomes.

What do these findings mean?

- It is feasible to deliver a Mediterranean-style diet to inner-city pregnant women and increase their uptake of relevant dietary components.
- Mediterranean-style diet in pregnancy did not improve the overall maternal and offspring outcomes but has the potential to prevent gestational diabetes.
- Future studies should assess the effect of in utero exposure to Mediterranean-style diet—particularly to nuts and olive oil—on childhood obesity, allergy, and asthma.

Introduction

One in four mothers enter pregnancy with preexisting obesity, chronic hypertension, or hyperlipidaemia [1,2]. In addition to complications in pregnancy, these mothers and their babies are at long-term risk of diabetes and cardiovascular complications [3]. A Mediterranean-style diet, rich in mono- and polyunsaturated fatty acids, reduces the incidence of cardiovascular diseases in the nonpregnant population [4–6]. In pregnancy, such a diet has the potential to improve maternal and offspring outcomes by preventing gestational diabetes, preeclampsia, and foetal growth restriction [7–9].

In the general population, individuals at high risk of cardiovascular diseases are advised to follow specific dietary patterns such as Dietary Approaches to Stop Hypertension (DASH) [10]. Despite the publication of numerous randomised trials on diet and lifestyle interventions in pregnancy [11], no clear dietary recommendations have emerged to improve pregnancy outcomes for women with metabolic risk factors. This can be attributed to the variations in the interventions and the reporting of outcomes as well as the lack of robust evidence on

effectiveness of the diet [12]. To implement complex dietary interventions in practice, we require clear definitions of dietary components accompanied by simple guidance to improve adherence to the diet [13–15]. It is particularly challenging to evaluate such interventions in multi-ethnic pregnant populations comprising high-risk women from varied ethnic and socioeconomic backgrounds.

We undertook a multicentre pragmatic randomised trial (Effect of Simple, Targeted Diet in Pregnant Women With Metabolic Risk Factors on Pregnancy Outcomes [ESTEEM]) to evaluate the effects of a Mediterranean-style diet (supplemented with mixed nuts and extra virgin olive oil), with individualised dietary advice on maternal and offspring outcomes in pregnant women with metabolic risk factors, compared with routine antenatal care.

Methods

Trial oversight

The ESTEEM trial was approved by the NHS Research Ethics Committee (UK IRAS Reference No. 14/EE/1048). The Trial Steering Committee (TSC) provided independent supervision on all aspects of the trial conduct according to established principles and approved all protocol modifications (S1 Text) [16]. An independent Data Monitoring Committee (DMC) over-viewed the trial's data management and analysis. The California Walnut Commission and Blue Diamond Growers donated the walnuts, hazelnuts, and almonds without any influence on the study design, conduct, analysis, interpretation, or reporting. Extra virgin olive oil was purchased from industrial suppliers by the trial sponsor and was provided to the participants in the intervention group for free. The last author assumes responsibility for the completeness and accuracy of the data and analyses and for the fidelity of the trial to the protocol.

Study design

A randomised controlled trial that recruited women from 5 inner-city maternity units in the UK (4 in London, 1 in Birmingham) between 12 September 2014 and 29 February 2016. The trial was prospectively registered with clinicaltrials.gov (NCT02218931), and the protocol was previously published by Al Wattar and colleagues [17].

Participants

Pregnant women were recruited if they were at least 16 years of age, less than 18 weeks' gestation with a singleton pregnancy, able to consume nuts and olive oil, and proficient in written and spoken English. We excluded participants with a history of preexisting diabetes, gestational diabetes, chronic renal disease, or autoimmune disease, or if they were taking lipid-altering drugs such as statins at the time of booking. After recruitment, we randomised women with metabolic risk factors such as obesity (body mass index [BMI] ≥ 30 kg/m²), raised serum triglycerides (≥ 1.7 mmol/L) or chronic hypertension (≥ 140 mm Hg systolic blood pressure [BP] or ≥ 90 mm Hg diastolic BP) to the intervention or control arms. We employed the cut-off values used to define metabolic risk in the general population because the tests were done in early pregnancy, reflective of the preconception risk status [18].

Randomisation

Pregnant women received information about the trial alongside the invitation letter for their first antenatal booking appointment (S2 Text). After obtaining consent from eligible women, we collected baseline information on BP, BMI, and lipid profile (triglycerides, low-density, high-density, and very low-density cholesterol) at their booking visit. Women with at least one

of the prespecified metabolic risk factors were randomised to the 2 arms of the trial in a 1:1 ratio via a password-protected online data management system. We used minimisation (with a random element to ensure allocation concealment) to balance the groups for maternal BMI, parity, and ethnicity.

Intervention

The ESTEEM intervention was based on a Mediterranean-style diet. The key components of this diet included high intake of nuts, extra virgin olive oil, fruit, vegetables, nonrefined grains, and legumes; moderate to high consumption of fish; low to moderate intake of poultry and dairy products such as yoghurt and cheese; low consumption of red meat and processed meat; and avoidance of sugary drinks, fast food, and food rich in animal fat [19]. To promote their intake in pregnancy, we provided participants in the intervention arm with mixed nuts (30 g/day of walnuts, hazelnuts, and almonds) and extra virgin olive oil (0.5 L/week) as the main sources of cooking fat (S3 Text).

The trial dietitian and trained researchers delivered the intervention over 3 face-to-face sessions, which included a personalised one-on-one session at 18 weeks' gestation, and 2 further group sessions at 20 and 28 weeks using prepiloted presentations (S3 Text) [17]. In the first visit, we used the 24-hour food recall technique to identify any changes that were needed in the participants' diet to follow a Mediterranean-style pattern. We made the intervention culturally sensitive by providing cooking advice through a bespoke recipe book (S4 Text). We incorporated elements of the Mediterranean diet into the local cuisine by codesigning the recipes with community teams (food-academy.co.uk). Where possible, we involved women's partners to participate in these sessions. In between the face-to-face sessions, we followed up with the women twice with phone calls at 24 and 32 weeks' gestation to reinforce the dietary goals and to assess their general health. We used the number of sessions attended (at 18, 20, and 28 weeks' gestation) as a marker of adherence.

We undertook an internal pilot phase to determine the dietary intake of pregnant women using a validated Food Frequency Questionnaire (FFQ) for Mediterranean diet and a modified short questionnaire (ESTEEM Q) that was previously validated for adherence to the Mediterranean diet in a nonpregnant population [20]. Details of the methods used to validate the FFQ against the 24-hour dietary recall and against the ESTEEM Q have been published elsewhere by Al Wattar and colleagues [17]. Subsequently, we used the ESTEEM Q to assess the intake of dietary components at 20, 24, 28, 32, and 36 weeks (S5 Text) [21].

Participants allocated to the control group received dietary advice as per UK national recommendations for antenatal care and weight management in pregnancy [22–24]. In addition to folic acid and vitamin D supplementation [24], mothers in both groups who were considered to be at high risk of preeclampsia received low dose aspirin (75 mg) [23]. Both groups completed questionnaires at 36 weeks' gestation or at delivery to assess their level of physical activity (International Physical Activity Questionnaires [IPAQ]), gastrointestinal symptoms, and quality of life including the health thermometer (EQ-5D; S5 Text) [25].

Outcome measures

The primary endpoints were a composite maternal outcome combining gestational diabetes or preeclampsia and a composite offspring outcome combining stillbirth, small-for-gestational-age fetus, or admission to the neonatal care unit [17]. The individual components of the composite were identified by a Delphi survey and were rated to be critically important in the care of pregnant women [26]. Gestational diabetes was defined as either a fasting venous glucose value of 5.1 mmol/L or more, or 2-hour values of 8.5 mmol/L or more following a 75-g oral

glucose tolerance test (OGTT) as per the modified International Association of Diabetes and Pregnancy Study Group (IADPSG) criteria [27]. All participants were screened for gestational diabetes with OGTT as per national guidelines [28]. Preeclampsia included the following: new onset preeclampsia defined as onset of hypertension (systolic BP \geq 140 mm Hg or diastolic BP \geq 90 mmHg, in at least 2 readings, taken 4–6 hours apart) and new onset proteinuria (spot urine protein creatinine ratio [PCR] $>$ 30 mg/mmol or 24-hour urine protein $>$ 300 mg or 2+ or more on urine dipstick) after 20 weeks' gestation; and superimposed preeclampsia in women with chronic hypertension or chronic proteinuria (S6 Text) [23]. Small-for-gestational age fetus included babies with birth weight less than 10th percentile on the customised charts that were adjusted for gestation at delivery, maternal height, weight, parity, and ethnicity [29].

The initial primary endpoint was preeclampsia. Following the planned internal pilot, the independent TSC recommended the primary endpoint be extended to include composite maternal outcome and composite offspring outcome. The committee considered both gestational diabetes and preeclampsia to be major burdens facing women with metabolic risk factors, and that a large trial on Mediterranean diet in pregnancy should evaluate these maternal and the relevant offspring outcomes ranked as critically important to clinical care in a Delphi survey of researchers [26]. This decision was made independent of the trial investigators, before completion of data collection and development of the statistical analysis plan. The change of outcomes was approved by the Research Ethics Committee and was incorporated in the published protocol. The funders and sponsor of the study had no involvement in the revision of endpoint.

Our secondary maternal outcomes included gestational diabetes, preeclampsia, gestational weight gain, maternal admission to high dependency or intensive care unit, antepartum haemorrhage, mode of delivery, preterm delivery, and maternal anaemia. Our secondary offspring outcomes included stillbirths, neonatal deaths, small-for-gestational age fetus ($<$ 10th percentile), admission to the neonatal care unit, birth weight, and hypoxic ischaemic encephalopathy. The maternal intake of food groups, levels of triglycerides, levels of high-density lipoproteins (HDLs), the ratio of triglycerides to HDL, and the levels of non-high-density lipoprotein (non-HDL) cholesterol were compared between the 2 groups. A dedicated research staff recorded outcomes from clinical notes and from hospital electronic records following delivery.

Statistical analysis

We estimated the composite maternal and composite offspring outcomes to be observed in 24% of women with metabolic risk factors [30] and expected the intervention to reduce their occurrence by 30% [4]. We calculated that we needed to analyse data from 982 women to ensure an 80% power to detect this change at the 5% significance level. To allow for a loss of 20% at follow-up, we planned to randomise 1,230 women.

The primary analysis was conducted on an intention-to-treat (ITT) basis. Baseline demographics and clinical characteristics were summarised as percentages for categorical variables, mean (standard deviation) for normally distributed continuous variables, and median (interquartile range) for non-normally distributed variables. Participants who were enrolled in error were excluded post randomisation. Women who experienced miscarriages and terminations of pregnancy after randomisation were not included in any analysis of the offspring outcomes. We reported the effect of the intervention on composite maternal and foetal outcomes as adjusted odds ratio (aOR) with 95% confidence interval (CI) using a multivariable logistic regression model. In addition to the minimisation factors, we adjusted the primary analysis for other factors determined a priori (maternal age, history of gestational diabetes in a previous pregnancy, stillbirth in a previous pregnancy, family history of hypertensive disorder or diabetes, and the centre of recruitment) [21,28,22].

We repeated the ITT analysis for the primary composite outcomes in subgroups specified a priori for women with and without obesity, chronic hypertension, and raised triglycerides and tested for any interactions. The individual components of the primary outcome, as well as other secondary outcomes, were analysed using multivariable logistic regression for binary outcomes and linear regression for continuous outcomes, with a normalizing transformation when necessary. When a continuous outcome was also assessed at baseline, we adjusted for this as an additional covariate. We only included participants with nonmissing outcome in the primary analysis. This approach is unbiased if the data were ‘missing at random’, i.e., missingness for the outcome is related to the observed covariates. We investigated the sensitivity of our conclusions to this assumption, when more than 5% of data for the primary outcome were missing, by imputing missing outcomes under alternative assumptions and by re-estimating the treatment effect.

For validation of the FFQ against the 24-hour dietary recall and the ESTEEM Q, we specified a priori that the agreement using intraclass correlation coefficient (ICC) was good for nutrient values if the score was above 0.5, acceptable if between 0.49 and 0.2 and poor if below 0.2 [31]. For Kappa statistics, we considered the agreement to be good for $\kappa > 0.6$, acceptable for $\kappa 0.6-0.2$, and poor for $\kappa < 0.2$ [31]. Quartile cross-classification for agreement was considered to be good if $\geq 50\%$ were in the same quartile and $\leq 10\%$ were in the opposite quartile. The agreement was judged as poor if $< 50\%$ were in the same quartile and $> 10\%$ were in the opposite quartile. Values in between these ranges were judged to denote moderate agreement [31].

The study statisticians and the research team were blinded to the analyses and interpretation of results. An independent statistician provided unblinded summaries and reports using computer code to the DMC. All analyses for the trial were conducted using STATA version 12 or higher (StataCorp, College Station, TX, 2012).

We inferred the findings of the ESTEEM trial in the context of available evidence by systematically searching the literature (MEDLINE and EMBASE from inception till January 2019) for similar trials on Mediterranean diet in pregnancy. We extracted the data and pooled the results using random effects meta-analysis and reported the effects as an odds ratio (OR) with 95% CI and heterogeneity using I^2 estimates [32].

Patient and public involvement

We sought input from pregnant women at the trial design stage by conducting a survey of their views on the feasibility and acceptability of the planned intervention. The TSC had a lay representative from Action on Preeclampsia Charity (APEC; [S1 Text](#)).

Results

We screened 7,950 women, recruited 3,421, and randomised 1,252 women with metabolic risk factors to the intervention ($n = 627$) or to the control group ($n = 625$). Baseline data were available for 99% (1,237/1,252) of the randomised participants; 93% (553/593) in the intervention and 96% (585/612) in the control groups were followed up and included in the analysis. [Fig 1](#) depicts the enrolment, randomisation, and follow-up of participants in the ESTEEM trial.

A third of the randomised women were primigravida (330/1,205; 27%), 60% were Black or Asian (729/1,205), 69% (836/1,205) were obese, 47% (515/1,090) had raised triglycerides at booking, and 5% (58/1,129) entered pregnancy with chronic hypertension ([Table 1](#)).

Three-quarters (410/553, 74%) of women in the intervention group attended at least one of the planned intervention sessions. Women were able to receive their nuts and olive oil even when they missed a session. Mothers allocated to the intervention versus control group

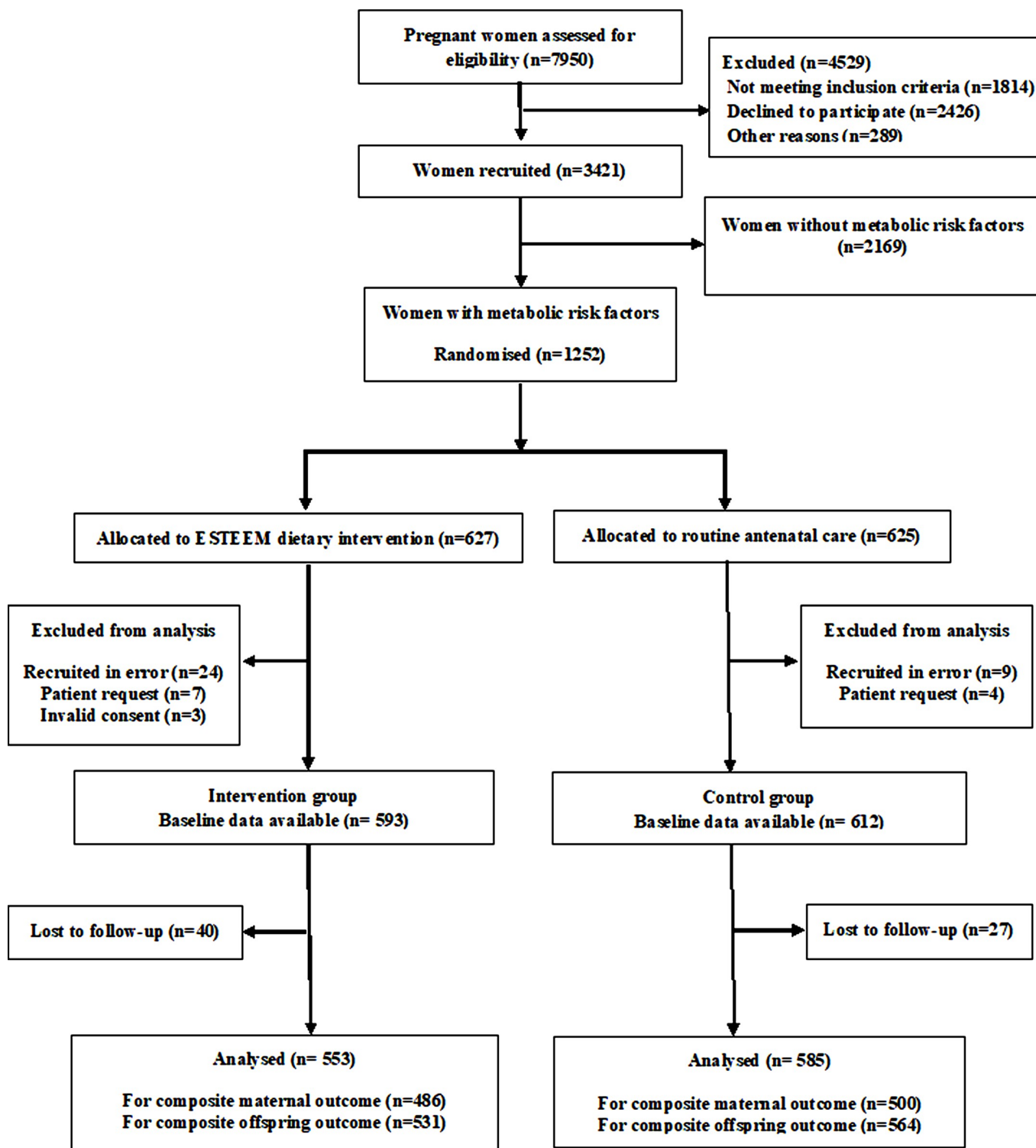


Fig 1. Enrolment, randomisation, and follow-up of participants in the ESTEEM trial. ESTEEM, Effect of Simple, Targeted Diet in Pregnant Women With Metabolic Risk Factors on Pregnancy Outcomes.

<https://doi.org/10.1371/journal.pmed.1002857.g001>

Table 1. Baseline characteristics of participants in the ESTEEM trial on Mediterranean-style diet in pregnancy.

Maternal characteristics (N intervention; control)	Intervention group Mean (SD); n (%)	Control group Mean (SD); n (%)
Maternal age (584; 610)		
Age years (mean SD) Age > 40 years	31.4 (5.2); 23 (3.9%)	30.9 (5.2); 19 (3.1%)
Gravidity (593; 612)		
Primigravida	162 (27.3%)	168 (27.5%)
Multigravida	431 (72.7%)	444 (72.5%)
Ethnicity (593; 612)		
White	217 (36.6%)	217 (35.5%)
Asian	257 (43.3%)	270 (44.1%)
Black	97 (16.4%)	105 (17.2%)
Other	22 (3.7%)	20 (3.3%)
BMI (kg/m²) (593; 612)		
Normal (18.5–24.9)	84 (14.2%)	84 (13.7%)
Overweight (25.0–29.9)	99 (16.7%)	102 (16.7%)
Obese (30.0–39.9)	410 (69.1%)	426 (69.6%)
Medical history		
Chronic hypertension (554; 575)	27 (4.9%)	31 (5.4%)
Previous history of preeclampsia (575; 600)	21 (3.7%)	29 (4.8%)
Previous history of gestational diabetes (563; 585)	15 (2.7%)	22 (3.8%)
Previous stillbirth or neonatal death (571; 598)	8 (1.4%)	14 (2.3%)
Previous admission to ITU/HDU (530; 557)	5 (0.9%)	10 (1.8%)
Family history of hypertension/preeclampsia (537; 536)	274 (51.0%)	276 (51.5%)
Family history of diabetes (541; 555)	276 (51.0%)	303 (54.6%)
Serum lipids		
Triglycerides mmol/L (532; 558) (mean SD)	1.6 (0.7)	1.7 (0.8)
HDL mmol/L (531; 557) (mean SD)	1.7 (0.5)	1.6 (0.4)
Ratio of triglycerides to cholesterol (527; 553)	0.3 (0.2)	0.3 (0.2)
Non-HDL mmol/L (529; 554) (mean SD)	3.2 (0.8)	3.3 (1.6)
Diet		
ESTEEM Q score (337; 210) (mean SD)	5.0 (1.9)	5.0 (1.9)
Physical activity		
MET (minutes per week)/week (406; 241) (mean SD)	2,579.5 (3,335.9)	2,591.7 (3,306.9)
Health		
Health thermometer (400; 222) (mean SD)	67.4 (18.7)	71.8 (18.7)

Abbreviations: ESTEEM Q, Effect of Simple, Targeted Diet in Pregnant Women With Metabolic Risk Factors on Pregnancy Outcomes questionnaire; HDL, high-density lipoprotein; HDU, high dependency unit; ITU, intensive treatment unit; LDL, low-density lipoprotein; MET, metabolic equivalent of task; non-HDL, non-high-density lipoprotein; SD, standard deviation

<https://doi.org/10.1371/journal.pmed.1002857.t001>

consumed significantly more nuts (70.1% versus 22.9%, aOR 6.8, 95% CI 4.3–10.6, $p \leq 0.001$) and extra virgin olive oil (93.2% versus 49.0%, aOR 32.2, 95% CI 16.0–64.6, $p \leq 0.001$); increased their intake of key components of the Mediterranean diet such as fish ($p < 0.001$), white meat ($p < 0.001$), and pulses ($p = 0.05$); and consumed less red meat ($p < 0.001$) and less butter, margarine, and cream ($p < 0.001$). There were no differences between the groups in their intake of other food groups or their physical activity (metabolic equivalent of task [MET]) (mean difference [MD] -0.2 , 95% CI -0.1 to 0.51 , $p = 0.19$; Table 2).

Outcomes

We did not observe a significant reduction in the odds of the composite maternal (aOR 0.76, 95% CI 0.56–1.03, $p = 0.08$) and composite offspring (aOR 0.79, 95% CI 0.58–1.08, $p = 0.14$)

Table 2. Changes in the reported dietary intake, physical activity, and health gastrointestinal symptoms in pregnant women in the ESTEEM trial.

Maternal diet, symptoms, and physical activity <i>N</i> (intervention; control)	Intervention	Control	Crude OR or MD (95% CI)	Crude <i>p</i> -value	aOR [#] or adjusted MD (95% CI)	Adjusted <i>p</i> -value
Dietary intake						
Olive oil as main fat source* (280; 298)	261 (93.2%)	146 (49.0%)	14.30 (8.52–24.01)	<0.001	32.19 (16.03–64.62)	<0.001
≥4 tbsp. of olive oil/day* (273; 296)	63 (23.1%)	28 (9.5%)	2.87 (1.78–4.64)	<0.001	2.81 (1.55–5.09)	<0.001
≥3 nut servings/week* (274; 292)	192 (70.1%)	67 (22.9%)	7.86 (5.40–11.45)	<0.001	6.75 (4.28–10.62)	<0.001
≥3 fish or shellfish servings/week* (276; 297)	101 (36.6%)	67 (22.6%)	1.98 (1.37–2.86)	<0.001	2.57 (1.57–4.21)	<0.001
Preferential consumption of chicken or turkey instead of veal, pork, hamburger, or sausage* (254; 279)	221 (87.0%)	224 (80.3%)	1.64 (1.03–2.63)	0.038	2.34 (1.26–4.35)	0.007
≤1 red meat, processed meat, or red meat products servings/day* (241; 278)	206 (85.5%)	156 (56.1%)	4.60 (3.00–7.07)	<0.001	3.42 (1.99–5.86)	<0.001
≤1 butter, margarine, or cream servings/day* (268; 291)	164 (61.2%)	115 (39.5%)	2.41 (1.72–3.39)	<0.001	2.41 (1.55–3.75)	<0.001
≤1 sugary drinks/day* (269; 295)	149 (55.4%)	121 (41.0%)	1.79 (1.28–2.49)	<0.001	1.40 (0.92–2.15)	0.12
≥3 pulse servings/week* (275; 296)	103 (37.5%)	86 (29.1%)	1.46 (1.03–2.08)	0.033	1.56 (1.00–2.44)	0.048
≥3 fruit units/day* (276; 296)	142 (51.4%)	156 (52.7%)	0.95 (0.68–1.32)	0.76	1.10 (0.72–1.68)	0.66
≤3 times consumption of commercial sweets or pastries/week* (276; 292)	165 (59.8%)	151 (51.7%)	1.39 (1.00–1.94)	0.053	1.42 (0.92–2.19)	0.11
≥2 vegetable servings/day* (274; 293)	185 (67.5%)	189 (64.5%)	1.14 (0.81–1.62)	0.45	1.34 (0.85–2.11)	0.21
ESTEEM Q score (mean SD) (218; 255)	7.2 (2.0)	5.1 (2.0)	2.1 (1.7–2.4)	<0.001	2.0 (1.7–2.3)	<0.001
Maternal gastrointestinal symptoms						
Fullness of stomach (266; 251)	151 (56.8%)	157 (62.5%)	0.79 (0.55–1.12)	0.18	0.93 (0.60–1.43)	0.73
Bloatedness (267; 250)	76 (28.5%)	92 (36.8%)	0.68 (0.47–0.99)	0.04	0.61 (0.39–0.96)	0.03
Vomiting (266; 250)	35 (13.2%)	44 (17.6%)	0.71 (0.44–1.15)	0.16	0.61 (0.33–1.14)	0.12
Nausea (267; 252)	70 (26.2%)	83 (32.9%)	0.72 (0.50–1.06)	0.09	0.82 (0.52–1.31)	0.41
Indigestion (267; 250)	126 (47.2%)	110 (44.0%)	1.14 (0.80–1.61)	0.47	1.08 (0.69–1.69)	0.73
Constipation (267; 251)	70 (26.2%)	82 (32.7%)	0.73 (0.50–1.07)	0.11	0.73 (0.46–1.15)	0.17
Diarrhoea (265; 250)	32 (12.1%)	39 (15.6%)	0.74 (0.45–1.23)	0.25	0.60 (0.34–1.09)	0.09
Health and physical activity						
Physical activity (MET [minutes per week]) (mean SD) (262; 270)	6.9 (1.6)	6.7 (2.0)	0.24 (–0.07–0.56)	0.13	0.21 (–0.10–0.51)	0.19
Health thermometer (mean SD) (257; 252)	73.1 (16.9)	69.9 (18.6)	3.3 (0.2–6.4)	0.038	3.0 (0.1–5.9)	0.046

*OR: adjusted for the minimisation factors, age, history of previous gestational diabetes, family history of hypertensive disorders (hypertension and/or preeclampsia), family history of diabetes, history of stillbirth, and the recruitment centre.

*Score of 1 for each positive response

Abbreviations: CI, confidence interval; ESTEEM Q, Effect of Simple, Targeted Diet in Pregnant Women With Metabolic Risk Factors on Pregnancy Outcomes questionnaire; MD, mean difference; MET, metabolic equivalent of task; OR, odds ratio; SD, standard deviation; tbsp, tablespoon

<https://doi.org/10.1371/journal.pmed.1002857.t002>

outcomes with Mediterranean-style diet compared with usual care. For the individual components of the maternal composite outcome, there was a significant reduction in the odds of gestational diabetes by 35% (aOR 0.65, 95% CI 0.47–0.91, $p = 0.01$) but no significant effect on preeclampsia (aOR 1.4, 95% CI 0.84–2.4, $p = 0.19$) in the intervention group. We did not observe a significant reduction in any of the individual components of the composite offspring outcome (small-for-gestational age fetus: aOR 0.78, 95% CI 0.53–1.15, $p = 0.21$; stillbirth: aOR 0.49, 95% CI 0.04–5.57, $p = 0.56$; and admission to the neonatal unit: aOR 0.79, 95% CI 0.53–1.18, $p = 0.25$; Table 3).

Women allocated to the intervention gained less weight in pregnancy (MD -1.2 kg, 95% CI -2.2 to -0.2 , $p = 0.03$) than the control group. There were no differences between the groups for other secondary outcomes (Table 4).

A sensitivity analysis that imputed missing outcomes under varying departures from the missing-at-random assumption found the results to be qualitatively unchanged even when the OR for missing versus nonmissing outcomes was as high as 3 or as low as 0.33 (S1 Fig).

There were no major differences in the treatment effect for composite maternal or offspring outcomes within the subgroups of maternal obesity, chronic hypertension, or raised triglycerides (Table 5).

Assessment of dietary intake of the participants using the FFQ showed good to acceptable agreement with the 24-hour dietary recall method for meat (ICC 0.56) and fish (ICC 0.52) and acceptable agreement for bread (ICC 0.46), vegetables (ICC 0.20), legumes (ICC 0.25), eggs (ICC 0.23), and pastries, cakes, and sweets (ICC 0.21). There was good quartile cross-classification agreement for the majority of food groups, except for eggs, legumes, olive oil, and nuts. ESTEEM Q demonstrated moderate to good agreement with the FFQ for the use of olive oil (κ 0.52), fruits (κ 0.36), butter or margarine (κ 0.33), sugary drinks (κ 0.50), fish (κ 0.30), commercial sweets (κ 0.35), and nuts (κ 0.36).

Meta-analysis of randomised trials on Mediterranean diet in pregnancy

Our literature search identified one randomised trial involving 874 unselected pregnant women from Spain (St. Carlos study) [33]. The women were mainly of Caucasian origin, and three-quarters (659/874, 75%) had normal BMI. The intervention was a Mediterranean diet supplemented with nuts and extra virgin olive oil. The pooled effect estimate (2 trials, 2,012 women) showed a consistent reduction in gestational diabetes (OR 0.67, 95% CI 0.53–0.84; $I^2 = 0\%$). The intervention did not reduce the rates of other individual components of the primary composite outcomes such as preeclampsia, small-for-gestational age fetus, or admission to the neonatal care unit. Fig 2 illustrates the forest plots for all conducted meta-analyses.

Discussion

Main findings

In the ESTEEM trial, we successfully implemented a Mediterranean-style diet in a multi-ethnic pregnant population of high-risk women. Mothers who followed the intervention significantly increased their consumption of nuts, olive oil, fish, white meat, and pulses and lowered their intake of red meat and butter or margarine compared with the usual care group. Overall, the intervention did not significantly reduce the composite maternal and offspring outcomes; still, it had an apparent protective effect to reduce the incidence of gestational diabetes and gestational weight gain.

Table 3. Effects of Mediterranean-style diet in pregnancy on the primary composite maternal and composite offspring outcomes and their individual components.

Outcomes (N intervention; control)	Intervention N (%)	Control N (%)	Crude OR (95% CI)	Crude <i>p</i> -value	aOR* (95% CI)	Adjusted <i>p</i> -value
Primary outcomes						
Composite maternal outcome (486; 500)**	111 (22.8%)	143 (28.6%)	0.74 (0.55–0.98)	0.04	0.76 (0.56–1.03)	0.08
Composite offspring outcome (531; 564) [#]	92 (17.3%)	118 (20.9%)	0.79 (0.59–1.07)	0.13	0.79 (0.58–1.08)	0.14
Individual components of the composite outcomes						
Gestational diabetes (477; 497)	84 (17.6%)	124 (24.9%)	0.64 (0.47–0.88)	0.01	0.65 (0.47–0.91)	0.01
Preeclampsia (552; 585)	34 (6.2%)	27 (4.6%)	1.36 (0.81–2.28)	0.25	1.43 (0.84–2.43)	0.19
Small-for-gestational age fetus (531; 564) ^{§,¶}	52 (9.8%)	69 (12.2%)	0.78 (0.53–1.14)	0.20	0.78 (0.53–1.15)	0.21
Stillbirth (533; 566) [#]	1 (0.2%)	2 (0.4%)	0.53 (0.05–5.86)	0.60	0.49 (0.04–5.57)	0.56
Admission to neonatal unit (533; 565) [#]	49 (9.2%)	64 (11.3%)	0.79 (0.54–1.17)	0.25	0.79 (0.53–1.18)	0.25

*aOR: adjusted for the minimisation factors, age, history of previous gestational diabetes, family history of hypertensive disorders (hypertension and/or preeclampsia), family history of diabetes, history of stillbirth and the recruitment centre.

** Women with gestational diabetes or with preeclampsia were considered to have the composite maternal outcome even if the other component of outcome was missing; for the composite outcome to be considered absent both components needed to be confirmed absent—otherwise the composite outcome was considered to be missing. Similar approach was used for the composite offspring outcome.

[§]Small for gestation age: <10th centile using customised charts adjusting for maternal height, weight, parity, gestation at delivery and ethnic origin

[¶]Denominator for components of composite offspring outcome excludes women with miscarriage and termination of pregnancy.

Abbreviations: aOR, adjusted odds ratio; CI, confidence interval; MD, mean difference

<https://doi.org/10.1371/journal.pmed.1002857.t003>

Strengths and weaknesses of the study

We registered and published the trial protocol prospectively [17]. Two-thirds of participants were from ethnic minority groups, who—in addition to being at risk of complications—are also usually difficult to engage in lifestyle interventions [34]. We used a simple, culturally sensitive, and easy to follow intervention; involved the partners and the wider family; and provided extra virgin olive oil and nuts. Three-quarters of participants (74%, 410/553) attended at least one of the planned intervention sessions, a rate that is comparable to other trials on diet-based interventions in pregnancy [30,35]. Mothers had the flexibility to receive olive oil and nuts even when they did not attend the face-to-face sessions. We evaluated the validity of the dietary assessment tools used within our study population for the key food groups in the Mediterranean diet. In women randomised to the intervention, we observed an increased intake of not only nuts and olive oil but also changes in the consumption of other key components of Mediterranean-style diet such as increased intake of fish, preferential intake of chicken and turkey over veal and sausages, and reduced consumption of red meat and butter compared with the control group, indicating adherence to the overall diet. Our choice of the individual components of the primary composite outcomes was based on a Delphi survey of experts who specified the outcomes to be critically important in the evaluation of lifestyle interventions in pregnancy [26]. The decision to add components to the original primary outcome was made by a committee independent to the trial team, without access to any data that may provide insight into the treatment effect.

We did not find a significant reduction in maternal composite outcome. The majority of our participants were multigravida (875/1,205; 73%). This may explain the relatively low incidence of preeclampsia (61/1,138; 5.3%), a condition more commonly observed in the first pregnancy. Our participants were from diverse ethnic and cultural backgrounds, and we were not able to take into account the variations in baseline dietary pattern. However, we ensured that the diet in the intervention arm was culturally appropriate and adapted to their individualised needs. We did not blind participants or researchers, which is difficult to achieve in

Table 4. Effects of Mediterranean-style diet in pregnancy on the secondary maternal and offspring outcomes in pregnant women with metabolic risk factors.

Outcomes N (intervention; control)	Intervention N (%)	Control N (%)	Crude OR or MD (95% CI)	Crude <i>p</i> -value	aOR* or adjusted MD (95% CI)	Adjusted <i>p</i> -value
Maternal clinical outcomes						
Gestational weight gain (kg) (mean, SD) (230; 238)	6.8 (5.6)	8.3 (6.4)	−1.5 (−2.6 to −0.4)	0.01	−1.2 (−2.2 to −0.2)	0.03
Preterm delivery <37 weeks (545; 579)	52 (9.5%)	64 (11.1%)	0.85 (0.58 to 1.3)	0.41	0.82 (0.55 to 1.22)	0.33
Preterm delivery <34 weeks (545; 579)	23 (4.2%)	26 (4.5%)	0.94 (0.53 to 1.66)	0.82	0.92 (0.51 to 1.67)	0.79
Antepartum haemorrhage (548; 580)	9 (1.6%)	13 (2.2%)	0.73 (0.31 to 1.72)	0.47	0.70 (0.29 to 1.72)	0.44
Caesarean section (539; 571)	175 (32.6%)	176 (30.8%)	1.08 (0.84 to 1.39)	0.56	1.06 (0.8 to 1.37)	0.65
Anaemia (547; 578)	114 (20.8%)	129 (22.3%)	0.92 (0.69 to 1.22)	0.55	0.91 (0.66 to 1.23)	0.53
Admission to HDU or ITU (527; 566)	18 (3.4%)	24 (4.2%)	0.80 (0.43 to 1.49)	0.48	0.79 (0.42 to 1.50)	0.48
Offspring outcomes						
Hypoxic ischaemic encephalopathy (531; 561)	2 (0.4%)	4 (0.7%)	0.53 (0.10 to 2.89)	0.46	0.56 (0.09 to 3.46)	0.53
Neonatal death (532; 566)	3 (0.6%)	1 (0.2%)	3.20 (0.33 to 30.90)	0.31	3.93 (0.33 to 46.10)	0.28
Birth weight (g) (mean, SD) (531; 565)	3,340.1 (623.1)	3,277.6 (599.4)	62.4 (−10.0 to 134.9)	0.09	56.0 (−15.4 to 127.4)	0.12
Very small for gestational age (customised) (531; 564)*	17 (3.2%)	21 (3.7%)	0.86 (0.45 to 1.64)	0.64	0.84 (0.43 to 1.63)	0.60
Large for gestational age (customised) (531; 564)*	73 (13.7%)	64 (11.3%)	1.25 (0.87 to 1.78)	0.23	1.23 (0.86 to 1.78)	0.26
Small for gestational age (population based) (531; 564)**	61 (11.5%)	86 (15.2%)	0.72 (0.51 to 1.03)	0.07	0.73 (0.51 to 1.04)	0.08
Very small for gestational age (population based) (531; 564)**	30 (5.6%)	33 (5.9%)	0.96 (0.58 to 1.60)	0.89	0.96 (0.57 to 1.61)	0.87
Large for gestational age (population based) (531; 564)**	59 (11.1%)	61 (10.8%)	1.03 (0.71 to 1.51)	0.88	1.01 (0.69 to 1.49)	0.94
Maternal laboratory outcomes (mean, SD)						
Triglycerides (mmol/L) (217; 257)	3.0 (1.3)	2.9 (1.3)	0.08 (−0.15 to 0.31)	0.50	0.04 (−0.15 to 0.22)	0.70
HDL (mmol/L) (221; 258)	1.8 (0.5)	1.8 (0.5)	0.03 (−0.06 to 0.12)	0.54	0.02 (−0.05 to 0.09)	0.51
Ratio of triglycerides to cholesterol (215; 255)	0.5 (0.2)	0.5 (0.2)	0.01 (−0.03 to 0.04)	0.67	0.01 (−0.02 to 0.04)	0.72
Non-HDL (mmol/L) (219; 256)	4.4 (1.3)	4.3 (1.3)	0.03 (−0.21 to 0.27)	0.82	0.01 (−0.18 to 0.19)	0.93

*aOR: adjusted for the minimisation factors, age, history of previous gestational diabetes, family history of hypertensive disorders (hypertension and/or preeclampsia), family history of diabetes, history of stillbirth and the recruitment centre

*Customised birth weight centile adjusted for maternal height, weight, parity, gestational age at delivery and ethnic origin

** Population based birth weight centile

Abbreviations: aOR, adjusted odds ratio; CI, confidence interval; HDL, high-density lipoprotein; HDU, high dependency unit; ITU, intensive treatment unit; MD, mean difference; non-HDL, non-high-density lipoprotein; SD, standard deviation

<https://doi.org/10.1371/journal.pmed.1002857.t004>

complex dietary interventions [36] and cannot rule out a Hawthorne effect with women in the control group accessing the intervention [37]. Despite the overall high follow-up rate, we could not ascertain the outcome of gestational diabetes in 15% of participants. But this was below our expected attrition rate of 20%. We did not use additional measures such as biomarkers to objectively assess the intake of olive oil and nuts. We only obtained information on dietary intake in about 40% of participants in both groups, a proportion that is consistent with what was observed in similar dietary trials involving pregnant women [38]. Although variations in the clinical management of gestational diabetes and preeclampsia might have influenced the offspring outcomes, we consider this less likely because both groups were managed according to the UK national guidelines [23,28]. In our preplanned, primary analysis, we adopted a relatively simplistic approach to dealing with missing components of composite

Table 5. Subgroup analysis on the effects of Mediterranean-style diet in pregnancy on the composite maternal and offspring outcomes and their individual components.

Outcomes <i>N</i> (intervention; control)	Intervention <i>n</i> (%)	Control <i>n</i> (%)	aOR* (95% CI)	Adjusted <i>p</i> -value
Composite maternal outcome				
Obese (348; 352)	81 (23.3%)	104 (29.5%)	0.72 (0.50–1.02)	0.55
Not obese (138; 148)	30 (21.7%)	39 (26.4%)	0.88 (0.50–1.57)	
Raised triglycerides (199; 212)	50 (25.1%)	71 (33.5%)	0.68 (0.43–1.08)	0.59
Normal triglycerides (243; 245)	51 (21.0%)	61 (24.9%)	0.81 (0.52–1.26)	
Chronic hypertension (30; 27)	10 (33.3%)	14 (51.9%)	0.60 (0.19–1.89)	0.67
No chronic hypertension (448; 461)	100 (22.3%)	125 (27.1%)	0.78 (0.57–1.07)	
Composite offspring outcome				
Obese (373; 392)	61 (16.4%)	86 (21.9%)	0.69 (0.48–1.01)	0.20
Not obese (158; 172)	31 (19.6%)	32 (18.6%)	1.08 (0.61–1.89)	
Raised triglycerides (223; 242)	38 (17.0%)	45 (18.6%)	0.94 (0.58–1.52)	0.37
Normal triglycerides (258; 270)	46 (17.8%)	63 (23.3%)	0.69 (0.45–1.07)	
Chronic hypertension (35; 28)	16 (45.7%)	6 (21.4%)	3.08 (0.97–9.77)	0.02
No chronic hypertension (487; 523)	76 (15.6%)	108 (20.7%)	0.72 (0.52–1.00)	
Preeclampsia				
Obese (386; 409)	26 (6.7%)	18 (4.4%)	1.65 (0.88–3.11)	0.40
Not obese (166; 176)	8 (4.8%)	9 (5.1%)	0.99 (0.37–2.69)	
Raised triglycerides (230; 252)	11 (4.8%)	11 (4.4%)	1.13 (0.47–2.71)	0.91
Normal triglycerides (270; 280)	18 (6.7%)	16 (5.7%)	1.21 (0.59–2.46)	
Chronic hypertension (36; 30)	7 (19.4%)	2 (6.7%)	3.62 (0.65–20.01)	0.25
No chronic hypertension (507; 542)	27 (5.3%)	24 (4.4%)	1.26 (0.71–2.24)	
Gestational diabetes				
Obese (341; 349)	61 (17.9%)	92 (26.4%)	0.58 (0.40–0.86)	0.27
Not obese (136; 148)	23 (16.9%)	32 (21.6%)	0.88 (0.47–1.65)	
Raised triglycerides (195; 212)	41 (21.0%)	63 (29.7%)	0.64 (0.39–1.04)	0.86
Normal triglycerides (238; 242)	36 (15.1%)	50 (20.7%)	0.68 (0.41–1.11)	
Chronic hypertension (27; 27)	5 (18.5%)	13 (48.1%)	0.28 (0.07–1.07)	0.19
No chronic hypertension (442; 458)	78 (17.6%)	107 (23.4%)	0.70 (0.50–1.00)	
Small for gestational age[§]				
Obese (375; 397)	33 (8.8%)	51 (12.8%)	0.65 (0.41–1.03)	0.28
Not obese (160; 174)	19 (11.9%)	21 (12.1%)	1.02 (0.52–2.00)	
Raised triglycerides (218; 239)	20 (9.2%)	23 (9.6%)	1.00 (0.53–1.91)	0.22
Normal triglycerides (256; 271)	27 (10.5%)	42 (15.5%)	0.60 (0.35–1.02)	
Chronic hypertension (35; 29)	10 (28.6%)	5 (17.2%)	2.02 (0.58–7.02)	0.09
No chronic hypertension (491; 529)	42 (8.6%)	66 (12.5%)	0.66 (0.43–0.99)	
Admission to neonatal unit[‡]				
Obese (386; 409)	36 (9.3%)	45 (11.0%)	0.86 (0.53–1.38)	0.60
Not obese (166; 175)	13 (7.8%)	19 (10.9%)	0.67 (0.31–1.45)	
Raised triglycerides (230; 251)	20 (8.7%)	29 (11.6%)	0.74 (0.40–1.37)	0.73
Normal triglycerides (270; 280)	26 (9.6%)	32 (11.4%)	0.86 (0.49–1.52)	
Chronic hypertension (36; 30)	6 (16.7%)	2 (6.7%)	2.43 (0.43–13.79)	0.22
No chronic hypertension (507; 541)	43 (8.5%)	59 (10.9%)	0.78 (0.51–1.20)	

*aOR: adjusted for the minimisation factors, age, history of previous gestational diabetes, family history of hypertensive disorders (hypertension and/or preeclampsia), family history of diabetes, history of stillbirth and the recruitment centre.

[§]Small for gestation age: <10th percentile using customised charts adjusting for maternal height, weight, parity, gestation at delivery and ethnic origin

[‡]Denominator for components of composite offspring outcome excludes women with miscarriage and termination of pregnancy

Abbreviations: aOR, adjusted odds ratio; CI, confidence interval

Participants in the intervention group reported better overall quality of life with higher health thermometer scores (MD 3.0, 95% CI 0.1–5.9, $p = 0.046$) than those in the control group (Table 2). Intake of a Mediterranean-style diet apparently reduced bloatedness (aOR 0.61, 95% CI 0.39–0.96, $p = 0.03$) in pregnancy but did not affect other symptoms such as nausea, vomiting, or indigestion (Table 2). One woman in the intervention arm had an allergic reaction to walnuts that resolved spontaneously. There were no serious adverse events in any of the participants.

<https://doi.org/10.1371/journal.pmed.1002857.t005>

outcomes, which could have potentially introduced bias. We considered post hoc a more exclusive definition of each composite outcome that required all the respective components to be nonmissing, but the results were similar (for maternal composite outcome: aOR 0.71, 95% CI 0.52–0.97; composite offspring outcome: aOR 0.80, 95% CI 0.59–1.09). Our sensitivity analysis also suggested that our findings were robust to departures from a ‘missing at random’ assumption.

The primary end point changed after the start of the randomised trial. We consider the potential risk of bias to be minimal for the following reasons. The decision to change the end-point by the independent TSC was based on the emerging evidence base on the burden of gestational diabetes and preeclampsia in women with metabolic risk factors, particularly in those from ethnic minority backgrounds with previous history of gestational diabetes. The TSC took into account observational evidence on Mediterranean diet in pregnancy and potential reductions in gestational diabetes [39,40], and the decision was made prior to completion of data collection and statistical analysis plan development and without knowledge of outcome data by allocated groups or any effect estimates. The changes in the endpoints were clearly documented in the revised protocol, in this paper, and were approved by the ethics committee. Finally, we reported the effects of the intervention on both the composite outcomes and its individual components, which includes the original endpoint. We advise caution on the interpretation of the results in view of the revised endpoints, and this needs to be confirmed in future large trials.

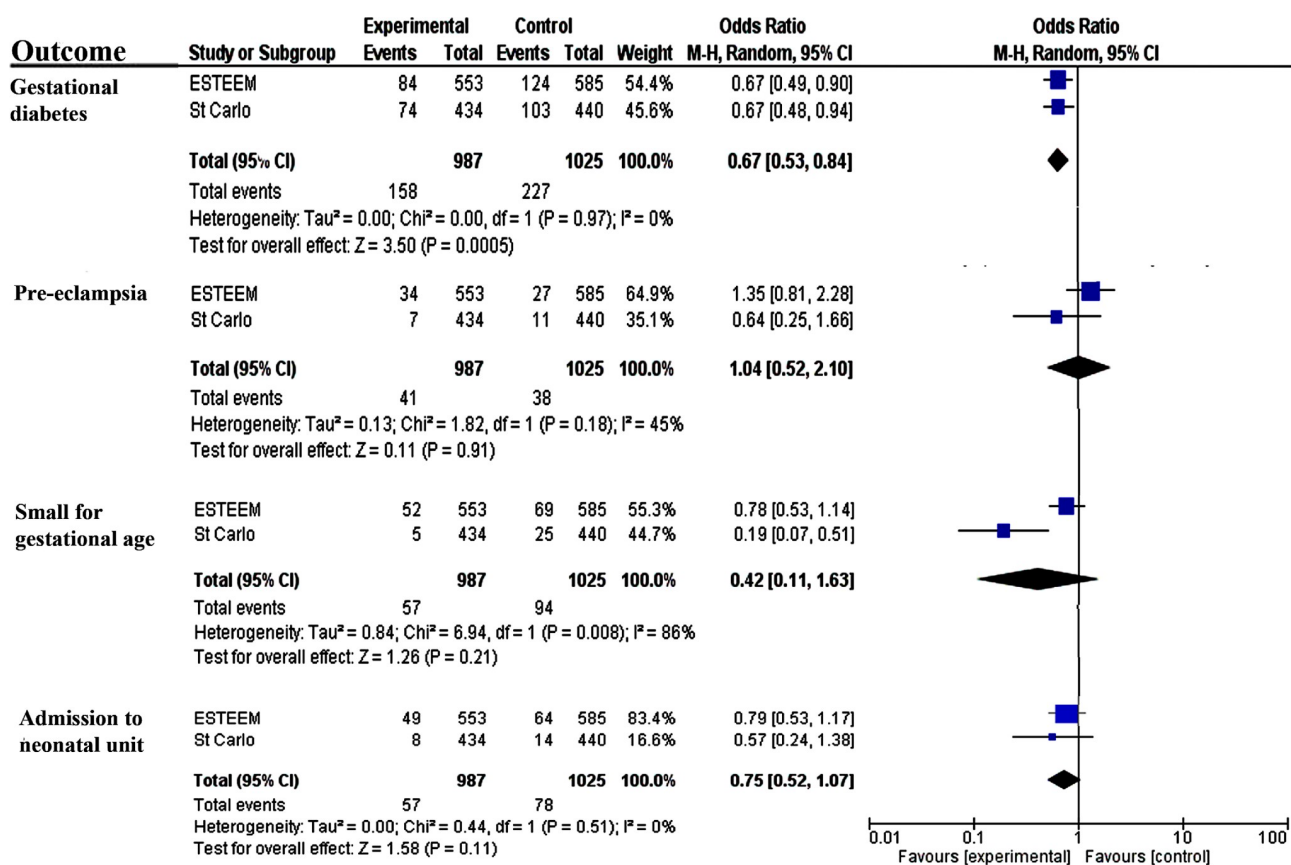


Fig 2. Meta-analysis of randomised trials on Mediterranean-style diet in pregnancy. CI, confidence interval; ESTEEM, Effect of Simple, Targeted Diet in Pregnant Women With Metabolic Risk Factors on Pregnancy Outcomes; M-H, Mantel-Haenszel.

<https://doi.org/10.1371/journal.pmed.1002857.g002>

Comparison with other studies

In our individual participant data (IPD) meta-analysis (36 randomised trials, 12,526 women) on diet and physical activity in pregnancy, interventions reduced gestational weight gain and caesarean section rates but not other maternal or offspring outcomes [11]. For key outcomes such as gestational diabetes and preeclampsia, both aggregate and IPD meta-analyses were limited by the variations in the definitions between studies. Individual studies had either shown no benefit or had insufficient power to detect meaningful differences [11,30].

Unlike the effects of a Mediterranean diet in the general population [41], we did not observe any differences in the lipid levels between both arms in our study. We found a moderate reduction in the mean gestational weight gain with intervention compared with control, consistent with reports on the protective role of a Mediterranean diet against obesity and weight gain [42]. This could be attributed to the satiety achieved with a plant-based diet, increased fibre intake, and the low glycaemic index of promoted food groups such as the pulses [42]. But lowered weight gain did not translate into reductions in composite maternal and composite offspring outcomes. In the St. Carlos trial, the beneficial effect of a Mediterranean diet was observed for gestational diabetes but not for gestational weight gain. It is possible that this beneficial effect on gestational diabetes was mediated through the high intake of dietary polyphenols found in key components of the Mediterranean diet such as extra virgin olive oil and nuts, by reducing insulin resistance, stimulating insulin secretion, activating insulin receptors, modulating glucose release, and increasing the uptake of glucose in the insulin-sensitive tissues [43]. Although a Mediterranean diet has been shown to reduce high BP in the general population at risk [44], and high adherence to this diet reduced foetal growth restriction in observational studies [7], we did not observe any reductions in the risk of preeclampsia or any offspring outcome. This could be attributed to the fact that because placental remodelling occurs in early pregnancy, the dietary intervention might not have been started early enough or long enough to observe any benefit [45]. Furthermore, we observed fewer women with preeclampsia than expected in this high-risk group. Despite the increase in the sample size in the meta-analysis, there was no reduction in the risk of preeclampsia.

Relevance to clinical practice and research

The results of ESTEEM combined with previous evidence show that supplementation of 30 g of mixed nuts per day and extra virgin olive oil can lower gestational weight gain and has strong potential to minimise risk of gestational diabetes. Delivering such dietary intervention is feasible as part of routine antenatal care, reflecting the pragmatic approach adopted in our trial. A definitive large-scale trial on a Mediterranean-style diet will need to assess both reduction in gestational diabetes and whether it translates to the prevention of type 2 diabetes in the mother in later life. The cost-effectiveness of following a Mediterranean-style diet also needs to be formally studied with a full economic evaluation. Although we did not find any differences between the groups in short-term offspring outcomes, we do not know the potential impact of in utero exposure to the various dietary components of the intervention on long-term outcomes such as childhood obesity and other conditions such as asthma and allergy disorders in the offspring. Furthermore, the long-term effects of the reduction in gestational diabetes in the mother on child outcomes also needs further evaluation. Future studies should assess the effect of in utero exposure to a Mediterranean-style diet on children, particularly to nuts and olive oil, on childhood obesity, allergy, and asthma [46].

Conclusion

A simple, individualised, Mediterranean-style diet in pregnancy did not reduce the overall risk of adverse maternal and offspring complications but has the potential to reduce gestational weight gain and the risk of gestational diabetes.

Supporting information

S1 Checklist. CONSORT checklist.

(DOC)

S1 Fig. Analysis of effect of departures from the missing-at-random assumption on the primary end points.

(DOCX)

S1 Table. Analysis of health status and quality of life using the EQ-5D assessment tool for participants in the ESTEEM trial. ESTEEM, Effect of Simple, Targeted Diet in Pregnant Women With Metabolic Risk Factors on Pregnancy Outcomes.

(DOCX)

S1 Text. Members of the ESTEEM study TSC and DMC. DMC, Data Monitoring Committee; ESTEEM, Effect of Simple, Targeted Diet in Pregnant Women With Metabolic Risk Factors on Pregnancy Outcomes; TSC, Trial Steering Committee.

(DOCX)

S2 Text. Patient information sheet for the ESTEEM study. ESTEEM, Effect of Simple, Targeted Diet in Pregnant Women With Metabolic Risk Factors on Pregnancy Outcomes.

(DOCX)

S3 Text. Intervention facts sheets and educational presentation for the ESTEEM trial.

ESTEEM, Effect of Simple, Targeted Diet in Pregnant Women With Metabolic Risk Factors on Pregnancy Outcomes.

(DOCX)

S4 Text. ESTEEM bespoke recipe book. ESTEEM, Effect of Simple, Targeted Diet in Pregnant Women With Metabolic Risk Factors on Pregnancy Outcomes.

(DOCX)

S5 Text. ESTEEM Q, EQ5D, IPAQ, FFQ, and 24-hour recall questionnaires. ESTEEM Q, Effect of Simple, Targeted Diet in Pregnant Women With Metabolic Risk Factors on Pregnancy Outcomes questionnaire; FFQ, Food Frequency Questionnaire; IPAQ, International Physical Activity Questionnaires.

(DOCX)

S6 Text. Definition of the primary outcomes.

(DOCX)

Acknowledgments

The authors thank the following bodies for supporting the ESTEEM study: The California Walnut Commission, Blue Diamond Growers, KTC edibles, and Food Academy UK (<http://www.food-academy.co.uk/>). The authors thank Calle-Pascual and colleagues for providing supportive data from the St. Carlos gestational diabetes mellitus prevention study. The authors

thank members of the ESTEEM study group: Rehan Khan, Asma Khalil, Vincent Oon, Manish Gupta, and Chloe Ohara.

Author Contributions

Conceptualization: Bassel H. Al Wattar, Julie Dodds, Amanda Moore, Frances Austin, Tessa J. Roseboom, Maira Bes-Rastrollo, Graham A. Hitman, Richard Hooper, Khalid S. Khan, Shakila Thangaratinam.

Data curation: Bassel H. Al Wattar, Julie Dodds, Anna Placzek, Lee Beresford, Eleni Spyreli, Frances Austin, Nilaani Murugesu, Graham A. Hitman, Shakila Thangaratinam.

Formal analysis: Bassel H. Al Wattar, Lee Beresford, Francisco J. Gonzalez Carreras, Richard Hooper, Khalid S. Khan, Shakila Thangaratinam.

Funding acquisition: Julie Dodds, Tessa J. Roseboom, Maira Bes-Rastrollo, Graham A. Hitman, Khalid S. Khan, Shakila Thangaratinam.

Investigation: Bassel H. Al Wattar, Eleni Spyreli, Frances Austin, Nilaani Murugesu, Tessa J. Roseboom, Graham A. Hitman, Khalid S. Khan, Shakila Thangaratinam.

Methodology: Bassel H. Al Wattar, Julie Dodds, Eleni Spyreli, Amanda Moore, Francisco J. Gonzalez Carreras, Maira Bes-Rastrollo, Khalid S. Khan, Shakila Thangaratinam.

Project administration: Bassel H. Al Wattar, Julie Dodds, Anna Placzek, Eleni Spyreli, Amanda Moore, Shakila Thangaratinam.

Visualization: Lee Beresford, Francisco J. Gonzalez Carreras, Richard Hooper.

Writing – original draft: Bassel H. Al Wattar, Julie Dodds, Anna Placzek, Lee Beresford, Shakila Thangaratinam.

Writing – review & editing: Bassel H. Al Wattar, Julie Dodds, Anna Placzek, Lee Beresford, Eleni Spyreli, Amanda Moore, Francisco J. Gonzalez Carreras, Frances Austin, Nilaani Murugesu, Tessa J. Roseboom, Maira Bes-Rastrollo, Graham A. Hitman, Richard Hooper, Khalid S. Khan, Shakila Thangaratinam.

References

1. Galtier-Dereure F, Boegner C, Bringer J. Obesity and pregnancy: complications and cost. *Am J Clin Nutr*. 2000; 71(5):1242s–1248s.
2. The Public Health England Obesity website [Internet]. Available from: http://www.noo.org.uk/NOO_about_obesity/maternal_obesity/%0Auk_trends. [cited 2015 Jun 10].
3. Lim CC, Mahmood T. Obesity in pregnancy. *Best Pract Res Clin Obstet Gynaecol*. 2015; 29(3):309–19. <https://doi.org/10.1016/j.bpobgyn.2014.10.008> PMID: 25702971
4. Salas-Salvadó J, Bulló M, Estruch R, Ros E, Covas M-I, Ibarrola-Jurado N, et al. Prevention of diabetes with Mediterranean diets: a subgroup analysis of a randomized trial. *Ann Intern Med*. 2014; 160(1):1–10. <https://doi.org/10.7326/M13-1725> PMID: 24573661
5. Kesse-Guyot E, Ahluwalia N, Lassale C, Hercberg S, Fezeu L, Lairon D. Adherence to Mediterranean diet reduces the risk of metabolic syndrome: a 6-year prospective study. *Nutr Metab Cardiovasc Dis*. 2013; 23(7):677–83. <https://doi.org/10.1016/j.numecd.2012.02.005> PMID: 22633793
6. Estruch R, Ros E, Martinez-Gonzalez MA. Mediterranean diet for primary prevention of cardiovascular disease. *N Engl J Med*. 2013; 369(7):676–7. <https://doi.org/10.1056/NEJMc1306659> PMID: 23944307
7. Chatzi L, Mendez M, Garcia R, Roumeliotaki T, Ibarluzea J, Tardon A, et al. Mediterranean diet adherence during pregnancy and fetal growth: INMA (Spain) and RHEA (Greece) mother-child cohort studies. *Br J Nutr*. 2012 Jan; 107(1):135–45. <https://doi.org/10.1017/S0007114511002625> PMID: 21733314
8. Timmermans S, Steegers-Theunissen RP, Vujkovic M, den Breeijen H, Russcher H, Lindemans J, et al. The Mediterranean diet and fetal size parameters: the Generation R Study. *Br J Nutr*. 2012; 108(08):1399–409.

9. Rodriguez-Bernal CL, Rebagliato M, Iniguez C, Vioque J, Navarrete-Munoz EM, Murcia M, et al. Diet quality in early pregnancy and its effects on fetal growth outcomes: the Infancia y Medio Ambiente (Childhood and Environment) Mother and Child Cohort Study in Spain. *Am J Clin Nutr*. 2010 Jun; 91(6):1659–66. <https://doi.org/10.3945/ajcn.2009.28866> PMID: 20410088
10. Lichtenstein AH, Appel LJ, Brands M, Carnethon M, Daniels S, Franch HA, et al. Summary of American Heart Association diet and lifestyle recommendations revision 2006. *Arterioscler Thromb Vasc Biol*. 2006 Oct; 26(10):2186–91. <https://doi.org/10.1161/01.ATV.0000238352.25222.5e> PMID: 16990564
11. Rogozińska E, Marlin N, Betrán AP, Astrup A, Barakat R BA et al., Rogozińska E, Marlin N, Dodds JP, Kerry S, Khan K, et al. Effect of diet and physical activity based interventions in pregnancy on gestational weight gain and pregnancy outcomes: Individual participant data (IPD) meta-analysis of randomised trials. *Br Med J*. 2017; 358:j3119.
12. Rogozińska E, Marlin N, Jackson L, Bogaerts A, Rayanagoudar G, Ruifrok AE, et al. Effects of antenatal diet and physical activity on maternal and fetal outcomes: individual patient data meta-analysis and health economic evaluation. *Health Technol Assess (Rockv)*. 2017 Aug; 21(41):1–158
13. Costa B, Barrio F, Cabré J-J, Piñol J-L, Cos X, Solé C, et al. Delaying progression to type 2 diabetes among high-risk Spanish individuals is feasible in real-life primary healthcare settings using intensive lifestyle intervention. *Diabetologia*. 2012; 55(5):1319–28. <https://doi.org/10.1007/s00125-012-2492-6> PMID: 22322921
14. McGill R, Anwar E, Orton L, Bromley H, Lloyd-Williams F, O'Flaherty M, et al. Are interventions to promote healthy eating equally effective for all? Systematic review of socioeconomic inequalities in impact. *BMC Public Health*. 2015; 15(1):457.
15. Schaefer JT, Magnuson AB. A review of interventions that promote eating by internal cues. *J Acad Nutr Diet*. 2014; 114(5):734–60. <https://doi.org/10.1016/j.jand.2013.12.024> PMID: 24631111
16. The National Institute for Health Research. Good Clinical Practice (GCP): Reference Guide. 2016;3.1. Available from: <https://www.nihr.ac.uk/our-faculty/documents/GCP> Reference Guide.pdf. [cited 2019 June 6].
17. Al Wattar BH, Dodds J, Placzek A, Spyrelli E, Moore A, Hooper R, et al. Effect of simple, targeted diet in pregnant women with metabolic risk factors on maternal and fetal outcomes (ESTEEM): study protocol for a pragmatic multicentre randomised trial. *BMJ Open*. 2016; 6(10):e013495. <https://doi.org/10.1136/bmjopen-2016-013495> PMID: 27798035
18. Yuan G, Al-Shali KZ, Hegele RA. Hypertriglyceridemia: its etiology, effects and treatment. *Cmaj*. 2007; 176(8):1113–20. <https://doi.org/10.1503/cmaj.060963> PMID: 17420495
19. Estruch R, Ros E, Salas-Salvadó J, Covas M-I, Corella D, Arós F, et al. Primary prevention of cardiovascular disease with a Mediterranean diet. *N Engl J Med*. 2013; 368(14):1279–90. <https://doi.org/10.1056/NEJMoa1200303> PMID: 23432189
20. Vioque J, Navarrete-Muñoz E-M, Gimenez-Monzó D, García-de-la-Hera M, Granado F, Young IS, et al. Reproducibility and validity of a food frequency questionnaire among pregnant women in a Mediterranean area. *Nutr J*. 2013; 12(1):26.
21. Schröder H, Fitó M, Estruch R, Martínez-González MA, Corella D, Salas-Salvadó J, et al. A short screener is valid for assessing Mediterranean diet adherence among older Spanish men and women. *J Nutr*. 2011; 141(6):1140–5. <https://doi.org/10.3945/jn.110.135566> PMID: 21508208
22. National Institute for Health and Clinical Excellence. Weight management before, during and after pregnancy. 2010. Available from: <https://www.nice.org.uk/guidance/ph27>. [cited 2019 June 6].
23. National Institute for Health and Clinical Excellence. Hypertension in pregnancy: diagnosis and management. 2010. Available from: <https://www.nice.org.uk/guidance/cg107>. [cited 2019 June 6].
24. National Institute for Health and Clinical Excellence. Antenatal care for uncomplicated pregnancies. 2008. Available from: <https://www.nice.org.uk/guidance/cg62>. [cited 2019 June 6].
25. Brooks R, Rabin R, De Charro F. The measurement and valuation of health status using EQ-5D: a European perspective: evidence from the EuroQol BIOMED Research Programme. Springer Science & Business Media; 2013.
26. Rogozińska E, D'Amico MI, Khan KS, Cecatti JG, Teede H, Yeo S, et al. Development of composite outcomes for individual patient data (IPD) meta-analysis on the effects of diet and lifestyle in pregnancy: a Delphi survey. *BJOG An Int J Obstet Gynaecol*. 2016; 123(2):190–8.
27. Metzger B. E., Gabbe S. G., Persson B., Lowe L. P., Dyer A. R., Oats J. J. N., & Buchanan T. International association of diabetes and pregnancy study groups recommendations on the diagnosis and classification of hyperglycemia in pregnancy. *Diabetes Care*. 2010; 33(3):676–82. <https://doi.org/10.2337/dc09-1848> PMID: 20190296

28. National Institute for Health and Clinical Excellence. Diabetes in pregnancy: management from preconception to the postnatal period. 2015. Available from: <https://www.nice.org.uk/guidance/ng3>. [cited 2019 June 6].
29. Gardosi J, Francis A. Customised weight centile calculator—GROW-Centile v. 5.12/6.2 2009. Gestation Network.
30. Poston L, Bell R, Croker H, Flynn AC, Godfrey KM, Goff L, et al. Effect of a behavioural intervention in obese pregnant women (the UPBEAT study): a multicentre, randomised controlled trial. *Lancet Diabetes Endocrinol*. 2015; 3(10):767–77. [https://doi.org/10.1016/S2213-8587\(15\)00227-2](https://doi.org/10.1016/S2213-8587(15)00227-2) PMID: 26165396
31. Lombard MJ, Steyn NP, Charlton KE, Senekal M. Application and interpretation of multiple statistical tests to evaluate validity of dietary intake assessment methods. *Nutr J*. 2015; 14(1):40.
32. Sutton AJ, Abrams KR, Jones DR, Sheldon TA, Song F. Methods for meta-analysis in medical research. *Stat Med*. 2003; 22(19):3111–4.
33. Assaf-Balut C, de la Torre NG, Durán A, Fuentes M, Bordiú E, del Valle L, et al. A Mediterranean diet with additional extra virgin olive oil and pistachios reduces the incidence of gestational diabetes mellitus (GDM): A randomized controlled trial: The St. Carlos GDM prevention study. *PLoS ONE*. 2017; 12(10): e0185873. <https://doi.org/10.1371/journal.pone.0185873> PMID: 29049303
34. West DS, Prewitt TE, Bursac Z, Felix HC. Weight loss of black, white, and Hispanic men and women in the Diabetes Prevention Program. *Obesity*. 2008; 16(6):1413–20. <https://doi.org/10.1038/oby.2008.224> PMID: 18421273
35. Dodd JM, Turnbull D, McPhee AJ, Deussen AR, Grivell RM, Yelland LN, et al. Antenatal lifestyle advice for women who are overweight or obese: LIMIT randomised trial. *Br Med J*. 2014; 348:g1285.
36. Al Wattar BH, Dodds J, Placzek A, Spyrelli E, Higgins S, Moore A, et al. Mediterranean diet based intervention in pregnancy to improve maternal and fetal outcomes: Methodological challenges and lessons learned from the multicentre ESTEEM study. *Contemp Clin Trials Commun*. 2017; 6:72–7. <https://doi.org/10.1016/j.conctc.2017.02.012> PMID: 29740638
37. Bruce WR, Eyssen GM, Ciampi A, Dion PW, Boyd N. Strategies for dietary intervention studies in colon cancer. *Cancer*. 1981 Mar; 47(5 Suppl):1121–5. [https://doi.org/10.1002/1097-0142\(19810301\)47:5+<1121::aid-cnrcr2820471310>3.0.co;2-k](https://doi.org/10.1002/1097-0142(19810301)47:5+<1121::aid-cnrcr2820471310>3.0.co;2-k) PMID: 6263443
38. Flynn AC, Seed PT, Patel N, Barr S, Bell R, Briley AL, et al. Dietary patterns in obese pregnant women; influence of a behavioral intervention of diet and physical activity in the UPBEAT randomized controlled trial. *Int J Behav Nutr Phys Act*. 2016; 13(1):124. <https://doi.org/10.1186/s12966-016-0450-2> PMID: 27894316
39. Yessoufou A, Nekoua MP, Gbankoto A, Mashalla Y, Moutairou K. Beneficial effects of omega-3 polyunsaturated Fatty acids in gestational diabetes: consequences in macrosomia and adulthood obesity. *J Diabetes Res*. 2015; 2015:731434. <https://doi.org/10.1155/2015/731434> PMID: 25961055
40. Karamanos B, Thanopoulou A, Anastasiou E, Assaad-Khalil S, Albache N, Bachaoui M, et al. Relation of the Mediterranean diet with the incidence of gestational diabetes. *Eur J Clin Nutr*. 2014; 68(1):8–13. <https://doi.org/10.1038/ejcn.2013.177> PMID: 24084515
41. Hernández Á, Castañer O, Elosua R, Pintó X, Estruch R, Salas-Salvadó J, et al. Mediterranean diet improves high-density lipoprotein function in high-cardiovascular-risk individuals: a randomized controlled trial. *Circulation*. 2017; 135(7):633–43. <https://doi.org/10.1161/CIRCULATIONAHA.116.023712> PMID: 28193797
42. Agnoli C, Sieri S, Ricceri F, Giraudo MT, Masala G, Assedi M, et al. Adherence to a Mediterranean diet and long-term changes in weight and waist circumference in the EPIC-Italy cohort. *Nutr Diabetes*. 2018; 8(1):22. <https://doi.org/10.1038/s41387-018-0023-3> PMID: 29695712
43. Guasch-Ferré M, Merino J, Sun Q, Fitó M, Salas-Salvadó J. Dietary polyphenols, Mediterranean diet, prediabetes, and Type 2 diabetes: A narrative review of the evidence. *Oxid Med Cell Longev*. 2017; 2017:6723931. <https://doi.org/10.1155/2017/6723931> PMID: 28883903
44. Toledo E, Hu FB, Estruch R, Buil-Cosiales P, Corella D, Salas-Salvadó J, et al. Effect of the Mediterranean diet on blood pressure in the PREDIMED trial: results from a randomized controlled trial. *BMC Med*. 2013; 11(1):1.
45. Roberts JM, Escudero C. The placenta in preeclampsia. *Pregnancy Hypertens An Int J Women's Cardiovasc Heal*. 2012; 2(2):72–83.
46. Chatzi L, Kogevinas M. Prenatal and childhood Mediterranean diet and the development of asthma and allergies in children. *Public Health Nutr*. 2009; 12(9A):1629–34. <https://doi.org/10.1017/S1368980009990474> PMID: 19689832