

Leptin modulates autophagy in human CD4⁺CD25⁻ conventional T cells

Cassano, S.; Pucino, V.; La Rocca, C.; Procaccini, C.; De Rosa, V.; Marone, G.; Matarese, G.

DOI:

[10.1016/j.metabol.2014.06.010](https://doi.org/10.1016/j.metabol.2014.06.010)

License:

Creative Commons: Attribution-NonCommercial-NoDerivs (CC BY-NC-ND)

Document Version

Publisher's PDF, also known as Version of record

Citation for published version (Harvard):

Cassano, S, Pucino, V, La Rocca, C, Procaccini, C, De Rosa, V, Marone, G & Matarese, G 2014, 'Leptin modulates autophagy in human CD4⁺ CD25⁻ conventional T cells', *Metabolism: Clinical and Experimental*, vol. 63, no. 10, pp. 1272-1279. <https://doi.org/10.1016/j.metabol.2014.06.010>

[Link to publication on Research at Birmingham portal](#)

General rights

Unless a licence is specified above, all rights (including copyright and moral rights) in this document are retained by the authors and/or the copyright holders. The express permission of the copyright holder must be obtained for any use of this material other than for purposes permitted by law.

- Users may freely distribute the URL that is used to identify this publication.
- Users may download and/or print one copy of the publication from the University of Birmingham research portal for the purpose of private study or non-commercial research.
- User may use extracts from the document in line with the concept of 'fair dealing' under the Copyright, Designs and Patents Act 1988 (?)
- Users may not further distribute the material nor use it for the purposes of commercial gain.

Where a licence is displayed above, please note the terms and conditions of the licence govern your use of this document.

When citing, please reference the published version.

Take down policy

While the University of Birmingham exercises care and attention in making items available there are rare occasions when an item has been uploaded in error or has been deemed to be commercially or otherwise sensitive.

If you believe that this is the case for this document, please contact UBIRA@lists.bham.ac.uk providing details and we will remove access to the work immediately and investigate.

Available online at www.sciencedirect.com

Metabolism

www.metabolismjournal.com

Leptin modulates autophagy in human CD4⁺CD25⁻ conventional T cells



Silvana Cassano^a, Valentina Pucino^{b,1}, Claudia La Rocca^{a,c,1}, Claudio Procaccini^a,
Veronica De Rosa^{a,e}, Gianni Marone^{b,d}, Giuseppe Matarese^{f,g,*}

^a Laboratorio di Immunologia, Istituto di Endocrinologia e Oncologia Sperimentale, Consiglio Nazionale delle Ricerche (IEOS-CNR), 80131 Napoli, Italy

^b Dipartimento di Scienze Mediche Traslazionali, Università di Napoli “Federico II”, 80131 Napoli, Italy

^c Dipartimento di Medicina Molecolare e Biotecnologie Mediche, Università di Napoli “Federico II”, 80131 Napoli, Italy

^d Centro Interdipartimentale di Ricerca in Scienze Immunologiche di Base e Cliniche (CISI), Università di Napoli “Federico II”, 80131 Napoli, Italy

^e Unità di NeuroImmunologia, IRCCS-Fondazione Santa Lucia, 00143 Roma, Italy

^f Dipartimento di Medicina e Chirurgia, Facoltà di Medicina e Chirurgia, Università di Salerno, Baronissi Campus, 84081 Baronissi, Salerno, Italy

^g IRCCS-MultiMedica, 20138 Milano, Italy

ARTICLE INFO

Article history:

Received 16 May 2014

Accepted 14 June 2014

Keywords:

Leptin

Autophagy

T cells

Metabolism

mTOR

ABSTRACT

Objective. In this report we show that the adipocytokine leptin directly modulates autophagy in human CD4⁺CD25⁻ conventional (Tconv) T cells.

Results. *In vitro* treatment with recombinant human leptin determined an inhibition of autophagy during T cell receptor (TCR) stimulation, and this phenomenon was dose- and time-dependent. The events were secondary to the activation of the mammalian-target of rapamycin (mTOR)-pathway induced by leptin, as testified by its reversion induced by mTOR inhibition with rapamycin. At molecular level these phenomena associated with Bcl-2 up-regulation and its interaction with Beclin-1, whose complex exerts a negative effect on autophagy.

Materials/methods. The impact of leptin on autophagy of Tconv cells was determined at biochemical level by western blotting and by flow cytometry; the interaction between BCL-2 and Beclin-1 by co-immunoprecipitation assays.

Conclusions. Our results, suggest that in unconditioned, freshly-isolated human Tconv cells, autophagy and proliferation are controlled by leptin during TCR-engagement, and that both phenomena occur alternatively indicating a balance between these processes during immune activation.

© 2014 The Authors. Published by Elsevier Inc. This is an open access article under the CC BY-NC-ND license (<http://creativecommons.org/licenses/by-nc-nd/3.0/>).

1. Introduction

Leptin is a 16 kD adipocyte-derived cytokine that regulates neuroendocrine functions and controls food intake, energy

expenditure, glucose and fat metabolisms [1]. It mediates its functions through the long form of the leptin receptor (LepRb) which is part of the class I cytokine receptors, expressed at different levels also on innate and adaptive immune cells

Abbreviations: mTOR, mammalian-target of rapamycin; TCR, T cell receptor; hLepRb, human leptin receptor-b; LC3-II, microtubule associated protein light chain 3-II; Tconv, T conventional.

* Corresponding author at: Dipartimento di Medicina e Chirurgia, Università di Salerno, Baronissi Campus, 84081 Baronissi, Salerno, Italy. E-mail address: gmatatarese@unisa.it (G. Matarese).

¹ These authors contributed equally to this work.

<http://dx.doi.org/10.1016/j.metabol.2014.06.010>

0026-0495/© 2014 The Authors. Published by Elsevier Inc. This is an open access article under the CC BY-NC-ND license (<http://creativecommons.org/licenses/by-nc-nd/3.0/>).

including monocytes, dendritic cells (DCs), B and T cells, respectively [2]. In this context, it has been previously suggested that leptin represents an important link among nutritional status, metabolism, and immune responses [3,4], indeed it signals to CD4⁺ T cells that sufficient amount of energy is stored as fat to support the increased energy demand during immune responses against pathogens [5]. Also, leptin shows differential effects on several T cell subpopulations [6,7] through the activation of the mammalian target of rapamycin (mTOR) pathway [7–9]. mTOR is a molecular sensor of cellular nutritional status and integrates signals from the environment to the nucleus for the regulation of cell metabolism, proliferation, survival and autophagy [10]. mTOR plays a negative role on cellular autophagy [11–14]: autophagy, from the Greek words, *auto* “self” and *phagein* “to eat”, is the basic catabolic mechanism that involves cell degradation of unnecessary or dysfunctional cellular components through the actions of lysosomes. The breakdown of cellular components can ensure cell survival during reduced energy availability (ie. starvation) by maintaining cellular energy levels [15]. During this process, targeted cytoplasmic constituents are isolated from the rest of the cell within the autophagosomes, which are then fused with lysosomes and degraded or recycled. The molecular mechanism by which mTOR inhibits autophagy is not completely understood. Over the past few years, autophagy has been considered as a process that provides a survival advantage to cells undergoing nutrient deprivation or other stresses [13–15]. Indeed genetic or pharmacological alterations in autophagy impair cell survival rate or cell metabolism, thereby affecting tissue homeostasis. In the context of the immune system, recent papers have shown that autophagy may be also linked to apoptosis [16–18] and might play different roles in lymphocyte development [19–21] and function, by maintaining the normal number of B, CD4⁺, CD8⁺ T cells [22,23] and controlling T cells activation [18], thymic selection [24] and antigen presentation [25]. These data indicate that autophagy plays a role in switching the cell fate toward differentiation or specific functional commitments, such as T cell polarization, suggesting that metabolic state (through leptin) might influence this process. Moreover, leptin has been demonstrated to exert opposite effects on human regulatory CD4⁺CD25⁺ (Treg) and conventional CD4⁺CD25⁻ (Tconv) T cells: indeed it inhibits Treg cell proliferation [6], on the one side, whereas it enhances Tconv proliferation, on the other [7]. These effects on both cellular subsets were induced by mTOR activation [7,8]. Particularly, on Tconv cells the enhancement in their proliferation associated with inflammatory cytokine secretion, whereas leptin neutralization determined the inhibition of their responses, thus suggesting a key role of this adipocytokine in Tconv cells homeostasis and function and in pathogenesis of several inflammatory and autoimmune disease [26]. Levels of leptin are, in fact, typically low during infection and high in autoimmune disorders, both systemically and at the site of inflammation (ie. multiple sclerosis (MS), systemic lupus erythematosus (SLE), rheumatoid arthritis (RA)) [26,27]. In this context, this report investigates the role of leptin, considered as a “dominant” peripheral signal of fuel availability, on the modulation of the autophagic process in the context of human Tconv cells biology.

2. Materials and methods

2.1. Cell cultures, purification and proliferation assays

The leptin-dependent BAF/3-LepRb⁺ cell line, stably transfected with the long form of human leptin receptor was kindly provided by Prof. Arie Gertler from the Hebrew University, Rehovot, Israel. In brief, BAF/3-hLepRb⁺ cells were cultured in RPMI-1640 medium in the presence of human leptin (10 ng/mL), supplemented with 10% FCS, 2 mmol/L L-glutamine, 100 units/mL penicillin, and 100 µg/mL streptomycin (Life Technologies, Carlsbad, CA). Cells were cultured at 37 °C in 100% humidity and 5% CO₂. To evaluate the leptin effects on autophagy, in all experiments, BAF/3-hLepRb⁺ cells (1–2 × 10⁶ cells/well) were leptin deprived for 12 h and left in low serum (2% FCS). The day after they were acutely stimulated with recombinant human leptin (100 ng/mL) (R&D Systems, Minneapolis, MN) at times shown in figures.

Human CD4⁺CD25⁻ Tconv cells were purified from PBMCs from buffy coats of human healthy donors by either magnetic cell separation with the Dynabeads Treg Cell Kit (Invitrogen) or by FACS sorting (MoFlo, Dako-Beckman-Coulter), and Tconv cells purity was always between 95 and 98%. The study was approved by the Federico II Ethics Review Board and donors gave informed written consent for the blood donation. Cells (1–2 × 10⁶ cells/well) were washed extensively with serum free culture medium, left in low serum [2% AB human serum (Invitrogen)] for 2 h at 37 °C in presence of lysosomal protease inhibitor [NH₄Cl (20 mmol/L) and leupeptin (100 µmol/L) (Sigma)], and after were washed and stimulated or not with recombinant human leptin (100–200 ng/mL) (R&D Systems, Minneapolis, MN) plus anti-CD3/CD28 mAbs coated beads (0.2 beads/cell, Invitrogen) for 2 h at 37 °C. For proliferation assays, Tconv cells were stimulated or not with human leptin (200 ng/mL) and human leptin-neutralizing mAb (R&D Systems, Minneapolis, MN), used at a final concentration of 0.25 to 25 mg/mL. For transient mTOR inhibition, either BAF/3-hLepRb⁺ or Tconv cells were pre-treated for 1 h with rapamycin (Sigma-Aldrich) at final concentration of 100 nmol/L. Cells were stimulated for 3 days, labeled with [3H]thymidine (0.5 mCi/well) (Amersham-Pharmacia Biotech, Cologno Monzese, Italy) for the last 16 h of culture, and harvested after 12 h (Tomtec). Radioactivity was measured with a β-cell-plate scintillation counter (Wallac, Gaithersburg, MD). For mouse studies, 8–10-wk-old C57BL/6J (B6) wild-type (WT), and leptin-deficient mice (C57BL/6J-ob/ob) were purchased from Charles River Laboratories (Calco, Italy). The study was approved by the Ethical Veterinary Board of the Federico II University.

For biochemical analyses on mouse cells, 1–2 × 10⁶ Tconv cells (isolated by negative selection using the Miltenyi Biotec Treg Cell Isolation kit and an AutoMACS cell separator, cell purity >95%), were obtained from the splenocytes of each group of WT or C57BL/6J-ob/ob mice and left for 12 h in 2% FCS, 2 mmol/L L-glutamine, 100 units/mL penicillin, and 100 µg/mL streptomycin (Life Technologies, Carlsbad, CA). The day after, cells were stimulated for 2 h with mouse recombinant leptin (200 ng/mL) (R&D Systems, Minneapolis, MN).

2.2. MDC assay

BAF/3-hLepRb⁺ cells, starved as previously described, were incubated with 0.05 mmol/L monodansyl-cadaverine (MDC) (Sigma Aldrich) at 37 °C for 10 min in presence or absence of leptin and analyzed by FACS (FACS-Canto Becton-Dickinson, San Diego, CA) and analyses were performed by Flow-Jo software (Tree Star, Ashland, OR).

2.3. Immunoblotting analyses

Total cell lysates were prepared by dissolving the cell pellet in cold radioimmune precipitation assay buffer RIPA (50 mmol/L Tris-HCl, pH 7.5, 150 mmol/L NaCl, 1% Nonidet P-40, 0.5% deoxycholate, 0.1% SDS and a mixture of protease and phosphatase inhibitors) for 15 min at 4 °C. The lysate was centrifuged (10,000 × *g* for 10 min); the supernatant was collected, quantized and resuspended in electrophoresis sample buffer, heated to 95 °C for 5 min and resolved on a SDS 15% polyacrylamide gel. Western blot with specific antibodies were used according to the protocol provided by the supplier. For all western blot shown 20 μg of total protein extracts was loaded; antibodies used were: anti-LC3 A/B, anti-phospho-STAT3 and anti-STAT3, anti-phospho-S6, anti-S6, (Cell Signaling Technology, Beverly, MA); anti-ERK1/2, anti-phospho-ERK1/2, anti-Bcl-2 and anti-actin (all from Santa Cruz Biotechnology, Santa Cruz, CA). Lysosomal protease inhibitors NH₄Cl plus leupeptin (Sigma) were used, at final concentration of 20 mmol/L and 100 μmol/L respectively, to better preserve the amount of LC3-II.

2.4. Co-immunoprecipitation

BAF/3-hLepRb⁺ cells (14 × 10⁷) were lysed in HEMG buffer (25 mmol/L HEPES (pH 8.0), 100 mmol/L NaCl, 0.5% Nonidet P-40, 0.1 mmol/L EDTA, 10% glycerol) plus protease and phosphatase inhibitors to detect endogenous Beclin-Bcl-2 complex. Equal amounts of protein (400 μg per experimental point) were incubated with a mouse monoclonal anti-Bcl-2 Ab (Santa Cruz Biotechnology) and a mouse pre-immune IgG at the same concentration overnight at 4 °C. The conditions used were in according to the protocol provided by the supplier. Eluates were resolved on a SDS 12% polyacrylamide gel and detected by WB with a rabbit anti-Beclin-1 Ab (Cell Signaling) and a rabbit anti-Bcl-2 Ab (Santa Cruz Biotechnology).

2.5. Statistical analysis

We used non-parametric Mann-Whitney *U* tests. The statistical software used was GraphPad InStat3 version 4.0. Results are expressed as mean ± S.E.M. *P* values <0.05 were considered statistically significant.

3. Results

3.1. Human leptin modulates proliferation and autophagy of BAF/3-hLepRb⁺ cells

To assess the role of leptin in the modulation of the autophagic process we firstly utilized an immortalized cell

line, BAF3, stably transfected with the full-length human leptin receptor (hLepRb) (see Methods for details) whose proliferation *in vitro* has been previously shown to be totally dependent on presence of leptin in culture medium. Firstly, we performed human recombinant leptin dose responses *in vitro* by measuring proliferation of the BAF/3-hLepRb⁺ cell line (Fig. 1A). Human leptin induced a dose-dependent proliferation of BAF/3-hLepRb⁺ cells through the engagement of LepRb since the phenomenon was completely abrogated by leptin neutralization with an anti-leptin mAb (Fig. 1A). These events were secondary to leptin-LepRb-STAT3 activation as suggested by increase in the P-STAT3 levels (Fig. 1B left). Indeed, in time course experiments, P-STAT3 revealed an oscillatory trend reaching a maximal activation at 30' rapidly subsiding after 60'-120'. To evaluate whether leptin plays also a role on mTOR regulation, we analyzed P-STAT3 levels in presence of rapamycin, a potent mTOR inhibitor. Transient inhibition of mTOR (1 h of rapamycin pre-treatment) significantly reduced the amount of P-STAT3 (Fig. 1B right); also, leptin treatment after rapamycin pretreatment, was able to restore P-STAT3 levels albeit to a lower extent at 30' (Fig. 1B right). To get further insights into mTOR pathways activity, we analyzed S6 phosphorylation, a downstream target of mTOR activity. Phospho-S6 was rapidly induced by leptin treatment and significantly inhibited by rapamycin pre-treatment. These phenomena were partly reversed by leptin (Fig. 1C right).

To evaluate the effect of leptin on the autophagic machinery, we used two different approaches: 1) flow cytometry analysis of the autofluorescent drug monodansyl-cadaverine (MDC), which is a specific autophagolysosome marker; 2) western blotting analysis of the microtubule associated protein light chain 3-II (LC3-II) protein, a well known marker of autophagy, by analyzing the conversion of LC3-I in LC3-II (autophagic flux) as LC3-II/LC3-I ratio. Leptin treatment significantly reduced the amount of MDC (Fig. 1D) and of LC3-II/LC3-I ratio (Fig. 1E), this inhibitory effect on autophagy was maximal at 60–120 min (Fig. 1E left). Finally, to evaluate whether leptin effects on autophagy could be mediated by mTOR pathway modulation, we studied this phenomenon in presence of rapamycin (Fig. 1E right). As expected, rapamycin alone increased autophagy and the phenomenon was reversed by leptin (Fig. 1E right). To rule out that LC3-II/LC3-I reduction was induced by leptin and not due to lysosomal proteases degradation, we tested the autophagic flux in presence or absence of lysosomal protease inhibitors (NH₄Cl/leupeptin) (Supplemental Fig. 1), confirming that the observed phenomenon was specifically reduced by leptin.

3.2. TCR and hLepRb modulate autophagy in human Tconv cells

To study the possible link between proliferation and autophagy in normal human T cells, we studied the autophagic flux also in highly purified, leptin-stimulated CD4⁺CD25⁻ Tconv cells. We firstly, tested the capacity of leptin to affect Tconv cell proliferation in the presence or absence of mTOR inhibition (Fig. 2A). Indeed, we confirmed that leptin neutralization in the culture medium was able to inhibit Tconv proliferation (Fig. 2A): the phenomenon was specific since it

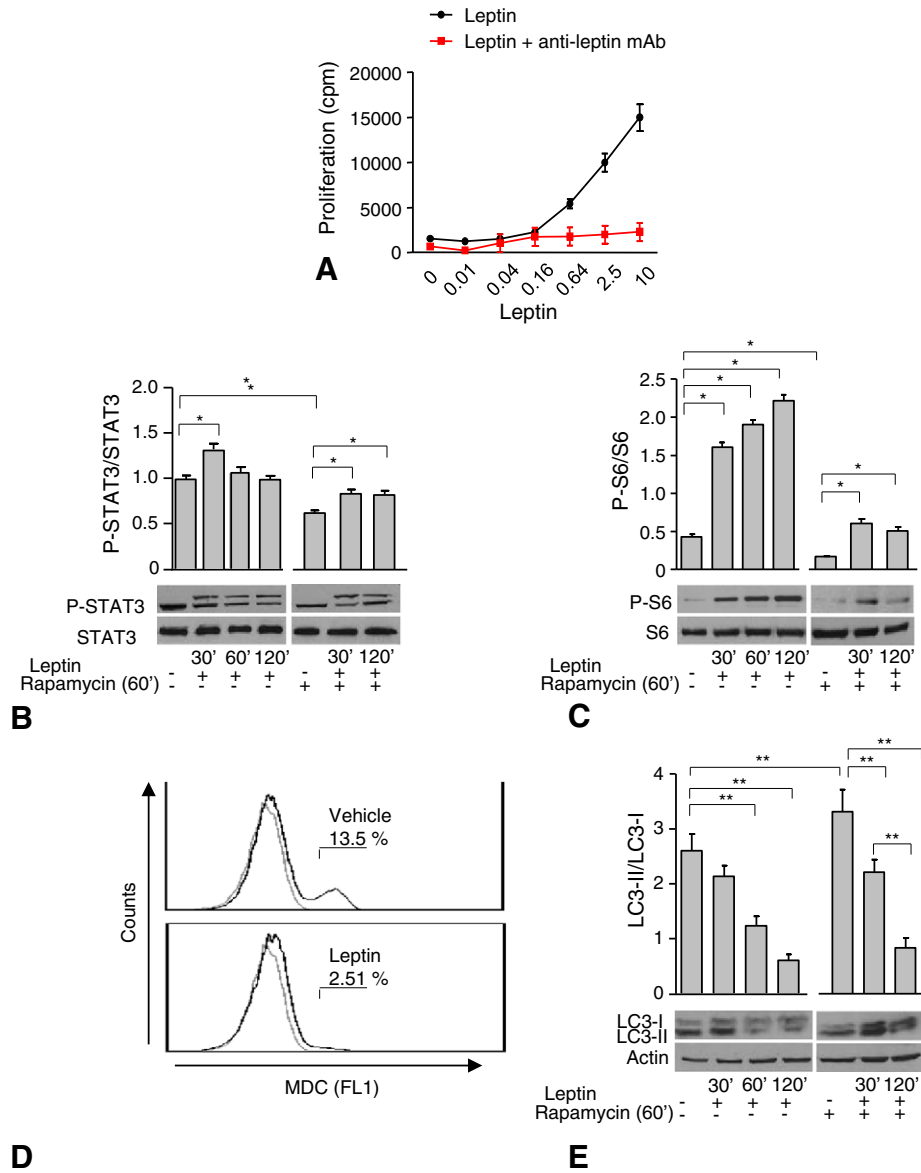


Fig. 1 – Leptin modulates autophagy via mTOR in BAF/3-hLepRb⁺ cells. ³H-thymidine incorporation in BAF/3-hLepRb⁺ cells stimulated with human leptin (0.01–10 ng/mL) in a dose response assay (A). Densitometric analysis of P-STAT3/STAT3 (B) and P-S6/S6 (C). Leptin (left panel) plus rapamycin (right panel) were used at 100 ng/mL and 100 nmol/L respectively at times shown in figures. BAF/3-hLepRb⁺ cells cultured in the presence or absence of leptin, were stained with monodansyl-cadaverine (MDC) and analyzed by flow cytometry (D). Autophagy levels were measured also by western blotting analysis and calculated as the ratio LC3-II/LC3-I. LC3-II was also normalized against actin. BAF/3-hLepRb⁺ cells were stimulated with leptin (left panel) plus rapamycin (right panel) at the same times and concentrations above described (E). The values shown represent the mean ± S.E. M. of at least three experiments one representative out of three independent experiments. * *p* < 0.05, ** *p* < 0.03.

was reversible upon readdition of leptin in cultures in the presence of anti-leptin neutralizing mAb. Rapamycin behaved similarly to the anti-leptin neutralizing mAb, since it inhibited Tconv cells proliferation and this inhibition was partly reversed by leptin. These experiments suggest that leptin supports T cell proliferation upon TCR-stimulation, and that these phenomena occurred *via* mTOR activation, since rapamycin was able to reduce T cell proliferation, phenomenon which was reversible *in vitro* by leptin treatment. Parallel biochemical analyses revealed that Tconv lymphocytes, in the

presence of increasing leptin concentrations, reduced autophagy (Fig. 2B). Leptin alone on purified, not-stimulated Tconv cells was not able to reduce autophagy in a dose dependent manner; this phenomenon was strongly induced by CD3/CD28 stimulation alone, and addition of leptin during TCR stimulation enhanced this phenomenon in a dose dependent manner (Fig. 2B). In these experimental conditions, leptin induced S6-phosphorylation, and this increase was maintained also during CD3/CD28 stimulation (Fig. 2C), suggesting an additive effect on the mTOR pathway induced by parallel

LepRb and TCR stimulation (Fig. 2C). Parallel, P-ERK1/2 analyses revealed little but significant effect of leptin on ERK1/2 phosphorylation which was not further potentiated after CD3/CD28 engagement (Supplemental Fig. 2A). In this context we also repeated these experiments before and after rapamycin treatment, and again we confirmed a reduction in autophagy

induced by leptin during CD3/CD28 stimulation, and the capacity of leptin to reverse autophagy induced by mTOR inhibition (Fig. 2D). These phenomena were accompanied by leptin induction of mTOR pathway activation as testified by increased S6-phosphorylation (Fig. 2E) while ERK1/2 phosphorylation was not potentiated by leptin during CD3/CD28 engagement (Supplemental Fig. 2B) thus suggesting a direct and specific effect of leptin on the autophagic machinery during TCR engagement in Tconv cells through mTOR activation.

3.3. Leptin regulates autophagy in Tconv cells through Bcl-2/Beclin-1 interaction

To better understand the link between leptin and autophagy at molecular level we analyzed also in chronic leptin deficient mouse models such as the *ob/ob* mice, the levels of autophagy in isolated Tconv cells before and after leptin treatment *in vitro* and compared them with wild-type (WT) animals (Fig. 2F). We confirmed the results obtained in human Tconv cells since chronic leptin deficiency associated with high levels of autophagy compared with WT mice; in both animals leptin treatment significantly reduced autophagy (Fig. 2F).

Since it is well known that leptin is able to maintain CD4⁺ T cell survival *in vitro* and *in vivo* by up-regulation of the pro-survival/anti-apoptotic gene Bcl-2 [9], we confirmed these results in our experimental conditions by assessing Bcl-2 levels in BAF/3-hLepRb⁺ and human Tconv (Fig. 3A and B). This effect on Bcl-2 was regulated by PI3K-mTOR axis, as either Ly294002 (a PI3K-inhibitor) or rapamycin pre-treatment reduced Bcl-2 levels; these phenomena were both partly reversible upon leptin treatment (Fig. 3A and B).

To get further insights into the molecular machinery controlled by leptin in the context of autophagy, we analyzed the interaction between the anti-autophagy Bcl-2 protein and Beclin-1, a key element of the autophagic cascade [28–30]. Of note, in our experimental conditions, we found that Bcl-2 co-immunoprecipitated with Beclin-1, thus suggesting a physical interaction between the anti-autophagy Bcl-2 and Beclin-1 (Fig. 3C left). These findings suggest that leptin inhibits autophagy by favoring the Bcl-2 up-regulation and consequent interaction and inhibition of Beclin-1.

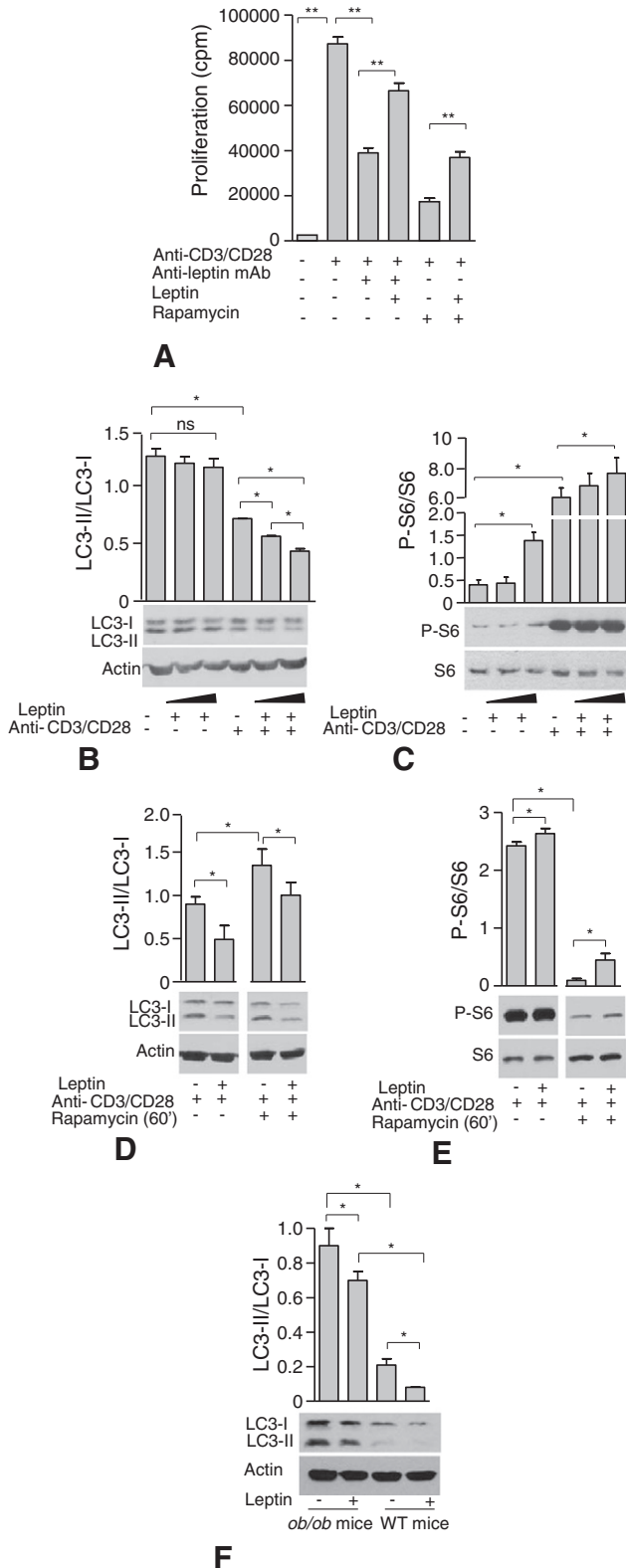


Fig. 2 – Leptin modulates autophagy via mTOR in CD4⁺ CD25⁻ Tconv cells. ³H-thymidine incorporation in human Tconv cells stimulated or not with leptin, anti-leptin neutralizing mAb or anti-CD3/CD28 beads (0.2 beads/cell), pretreated or not with rapamycin (60') (see Methods for details) (A). Densitometric analysis of LC3-II/LC3-I (B), P-S6/S6 (C) in human Tconv cells stimulated for 120' with increasing human leptin concentrations (100–200 ng/mL) plus anti-CD3/CD28 (0.2 beads/cell) and in presence or not of rapamycin (60' at 100 nmol/L) (D, E). Densitometric analysis of LC3-II/LC3-I ratio in extract from Tconv cells of *ob/ob* and WT mice stimulated or not with recombinant mouse leptin (200 ng/mL) for 120' (F). Cells were incubated with lysosomal protease inhibitors NH₄Cl (20 mmol/L) and leupeptin (100 μmol/L) in all experimental conditions (see Methods for details). Representative of at least three independent experiments. Data are shown as mean ± S.E.M. *p < 0.05, **p < 0.03, ns = not significant.

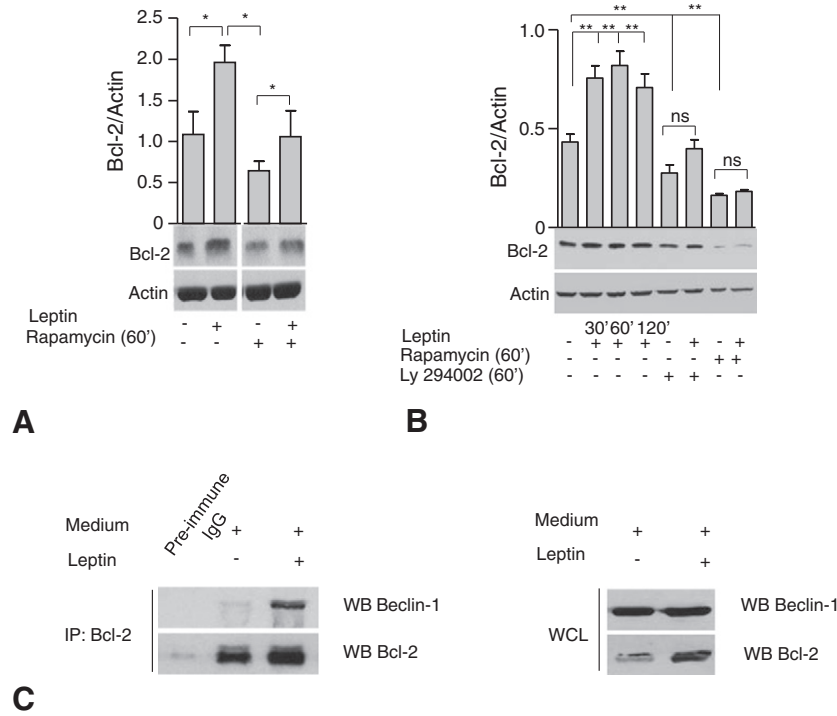


Fig. 3 – Leptin controls autophagy via a physical interaction of Bcl-2 with Beclin-1. Densitometric analysis of Bcl-2/Actin in human CD4⁺CD25⁻ Tconv cells (B) and in BAF/3-hLepRb⁺ cells (C) after leptin stimulation (120' at 200 and 100 ng/mL respectively) in presence and absence of rapamycin (100 nmol/L) (B) or Ly294002 (2.5 μmol/L) (C). Densitometric analyses represent the mean ± S.E.M. of at least three experiments one representative out of three independent experiments. **p* < 0.05, ***p* < 0.03, ns = not significant. Co-immunoprecipitation of Beclin-1 with Bcl-2 in BAF/3-hLepRb⁺ cells in presence and absence of leptin (200 ng/mL) (D), one representative experiment out of two replicates (IP, immunoprecipitate; WB, western blot; WCL, whole cell lysates).

4. Discussion

In this report we show that leptin, through mTOR, regulates autophagy and this effect occurs both in a leptin-dependent system such as the BAF/3-hLepRb⁺ transfectants and in human primary CD4⁺CD25⁻ Tconv cells. It is well corroborated that leptin plays pleiotropic functions on the immune system by signaling that sufficient amount of energy is stored as fat in body reserves [31]. Since leptin activates mTOR [7–9] (which has key functions in controlling the autophagic process) we asked whether this cytokine-like hormone could affect this process. Autophagy is involved in the development and/or homeostasis of several immune cell populations [32]. Indeed the knockout of different autophagy genes in specific lymphocyte populations in mice has shown a crucial role for autophagy proteins in the development and maintenance of normal numbers of B cells, CD4⁺ T cells, CD8⁺ T cells, in antigen presentation and in the elimination of autoreactive T cells in the thymus [19–25]. Moreover, both autophagy and leptin have been suggested to play a key role in the modulation of the onset and outcome of several autoimmune diseases [33]. Recent evidence suggests that autophagy, through the modulation of antigen presentation, is involved in presentation of citrullinate peptide, a hallmark of RA [34], and in the activation of CD8⁺ T cells for the elimination of microorganisms during infection [35]. Inter-

estingly, it has been shown that autophagy is implicated also in the survival of autoreactive B cells in SLE [36] and genome-wide association studies have shown association between single nucleotide polymorphism (SNP) in some autophagy related genes (ATG) with susceptibility to SLE [37], RA [38] and Crohn's disease [39].

Recent evidence indicates that leptin also promotes autoimmune disorders by enhancing pro-inflammatory cytokine secretion and immune responses [40]. In several autoimmune diseases, such as RA high serum leptin levels have been found [41,42], while, on the contrary, fasting, which associates with a marked decrease in serum leptin amount and a shift toward Th2-type cytokine secretion, improves clinical disease activity in RA patients [43]. Furthermore leptin has been shown to promote Th17 responses in normal human CD4⁺ T cells and in (NZB X NZW) F1 lupus-prone mice, by inducing ROR γ transcription, whereas, on the contrary, its neutralization in those autoimmune-prone mice inhibits Th17 responses [44]. Leptin has also been linked to spontaneous autoimmune disease such as type 1 diabetes (T1D) in the non-obese diabetic (NOD) mice [45] and in the induction and progression of EAE, a mouse model of MS [46,47]. Moreover, leptin can negatively modulate the expansion of human Treg cells [6] a cellular subset, which suppress autoreactive response mediated by Tconv cells thus suggesting a central role exerted by leptin in the pathogenesis of several

autoimmune diseases. Leptin influences Tconv cell functions through mTOR activation thus causing a defined cellular, biochemical and transcriptional modification that determines the outcome of their responses, both *in vitro* and *in vivo* and also confirming that this pathway might integrate cellular energy status with metabolic-related signaling in Treg/Tconv that use this information to control immune tolerance [7].

We observed a distinct capacity of leptin to inhibit the autophagic process in human Tconv cells. This phenomenon was rapid and early, sustained by the TCR engagement, which was able alone to inhibit autophagy at maximal level (Fig. 2B). The capacity of leptin to reduce autophagy was also confirmed in the Tconv cells from the leptin-deficient *ob/ob* mouse (Fig. 2F), since these cells showed a high level of autophagy when compared with WT counterparts (Fig. 2F). In this report we further a possible molecular mechanism accounting for the capacity of leptin to activate the anti-apoptotic gene Bcl-2 which in turn is able to physically interact and subtract Beclin-1 from the autophagic cascade (Fig. 3C). These data are in agreement with reports showing *in vivo* that leptin activates pro-survival pathways, including Bcl-2 [9], which in turn has determinant activities also on the autophagic machinery via its physical interaction with Beclin-1 [28].

Finally, our report unveils a novel mechanism of control exerted by nutritional status and metabolism on Tconv cells via leptin's control on autophagy. These effects can partly explain some of the well known anti-inflammatory activities induced by either nutritional deprivation or rapamycin treatment both able to significantly reduce circulating leptin, Tconv cell proliferation and consequently systemic inflammation.

Author contribution

G.M. and S.C. designed the research; S.C., V.P., C.L.R., V.D.R., C.P. and G.M. conducted the study; S.C., V.P., C.L.R., V.D.R., C.P., G.M. and G.M. analyzed data and interpreted results; S.C., V.P., C.L.R. G.M., and G.M., revised the article critically; S.C., V.P. and C.L.R. performed statistical analysis; S.C., V.P. and G.M., wrote manuscript and approved its final version.

Conflict of interest

The authors declare no competing financial interests.

Acknowledgments

The work is supported by grants from FISM 2012/R/11, the EU Ideas Programme ERC-StG “menTORingTregs” n. 310496, CNR-Medicina Personalizzata Grant, the Ministero della Salute Grant n. GR-2010-2315414, the FIRB Grant n. RBFR12I3UB_004 and Regione Campania CISI-Lab, CREME and TIMING projects. This work is dedicated to the memory of Eugenia Papa and Serafino Zappacosta.

Appendix A. Supplementary data

Supplementary data to this article can be found online at <http://dx.doi.org/10.1016/j.metabol.2014.06.010>.

REFERENCES

- [1] Fiedman JM, Halaas JL. Leptin and the regulation of body weight in mammals. *Nature* 1998;395:763–70.
- [2] Tartaglia LA, Damski M, Weng X, Deng N, Culpepper J, Devos R, et al. Identification and expression cloning of the leptin receptor Ob-R. *Cell* 1995;83:1263–71.
- [3] Frühbeck G, Salvador J. Relation between leptin and glucose metabolism. *Diabetologia* 2000;43:3–12.
- [4] Matarese G. Leptin and immune system: how nutritional status influences the immune response. *Eur Cytokine Netw* 2000;11:7–13.
- [5] Lord GM, Matarese G, Howard JK, Baker RJ, Bloom SR, Lechler RL. Leptin modulates the T-cells immune response and reverses starvation-induced immunosuppression. *Nature* 1998;394:897–901.
- [6] De Rosa V, Procaccini C, Cali G, Pirozzi G, Fontana S, Zappacosta S, et al. Key role of leptin in the control of regulatory T cells proliferation. *Immunity* 2007;26:241–55.
- [7] Procaccini C, De Rosa V, Galgani M, Carbone F, Cassano S, Greco D, et al. Leptin-induced mTOR activation defines a specific molecular and transcriptional signature controlling CD4⁺ effector T cell responses. *J Immunol* 2012;189:2941–53.
- [8] Procaccini C, De Rosa V, Galgani M, Abanni L, Cali G, Porcellini A, et al. An oscillatory switch in mTOR Kinase activity sets regulatory T cell responsiveness. *Immunity* 2010;33:1–13.
- [9] Galgani M, Procaccini C, De Rosa V, Carbone F, Chieffi P, La Cava A, et al. Leptin modulates the survival of autoreactive CD4⁺ T cells through the nutrient/energy-sensing mammalian target of rapamycin signaling pathway. *J Immunol* 2010;185:7474–9.
- [10] Wood SC, Seeley RJ, Cota D. Regulation of food intake through hypothalamic signaling networks involving mTOR. *Annu Rev Nutr* 2008;28:295–331.
- [11] Noda T, Ohsumi Y. Tor, a phosphatidylinositol kinase homologue, controls autophagy in yeast. *J Biol Chem* 1998;273:3963–6.
- [12] Kim J, Kundu M, Viollet B, Guan KL. AMPK and mTOR regulate autophagy through direct phosphorylation of Ulk1. *Nat Cell Biol* 2011;13:132–41.
- [13] Jung CH, Ro SH, Cao J, Otto NM, Kim DH. mTOR regulation of autophagy. *FEBS Lett* 2010;584:1287–95.
- [14] Sengupta S, Peterson TR, Sabatini DM. Regulation of the mTOR complex 1 pathway by nutrients, growth factors, and stress. *Mol Cell* 2010;40:310–22.
- [15] Scott RC, Schuldiner O, Neufeld TP. Role and regulation of starvation-induced autophagy in the *Drosophila* fat body. *Dev Cell* 2004;7:167–78.
- [16] Eisembenberg-Lerner A, Bialik S, Simon HU, Kimchi A. Life and death partners apoptosis, autophagy and the cross-talk between them. *Cell Death Differ* 2009;16:966–75.
- [17] Kroemer G, Levine B. Autophagy cell death: the story of misnomer. *Nat Rev Mol Cell Biol* 2008;9:1004–10.
- [18] Levine B, Yuan J. Autophagy in cell death an innocent convict. *J Clin Invest* 2005;115:2679–88.
- [19] Virgin HW, Levine B. Autophagy genes in immunity. *Nat Immunol* 2009;10:461–70.

- [20] He MX, McLeod IX, Jia W, He YW. Macroautophagy in T lymphocyte development and function. *Front Immunol* 2012;21:3–22.
- [21] Jia W, He YW. Temporal regulation of intracellular organelle homeostasis in T lymphocytes by autophagy. *J Immunol* 2011;186:5313–22.
- [22] Paul S, Schaefer BC. Selective autophagy regulates T cell activation. *Autophagy* 2012;8:1690–2.
- [23] Li C, Capan E, Zhao Y, Zhao J, Stolz D, Watkins SC, et al. Autophagy is induced in CD4⁺ T cells and important for the growth factor-withdrawal cell death. *J Immunol* 2006;177:5163–8.
- [24] Nedjic J, Aichinger M, Emmerich J, Mizushima N, Klein L. Autophagy in thymic epithelium shapes the T-cell repertoire and is essential for tolerance. *Nature* 2008;455:396–400.
- [25] Schmid D, Pypaert M, Münz C. Antigen-loading compartments for major histocompatibility complex class II molecules continuously receive input from autophagosomes. *Immunity* 2007;26:79–92.
- [26] Conde J, Scotece M, Gómez R, Gómez-Reino JJ, Lago F, Gualillo O. At the crossroad between immunity and metabolism: focus on leptin. *Expert Rev Clin Immunol* 2010;6:801–8. <http://dx.doi.org/10.1586/eci.10.48>.
- [27] Matarese G, Leiter EH, La Cava A. Leptin in autoimmunity: many questions, some answers. *Tissue Antigens* 2007;70:87–95.
- [28] Pattinre S, Tassa A, Qu X, Garuti R, Liang XH, Mizushima N, et al. Bcl-2 antiapoptotic proteins inhibit Beclin 1 dependent autophagy. *Cell* 2005;122:927–39.
- [29] He C, Bassik MC, Moresi V, Sun K, Wei Y, Zou Z, et al. Exercise-induced BCL2-regulated autophagy is required for muscle glucose homeostasis. *Nature* 2012;481:511–5.
- [30] Maejima Y, Kyoj S, Zhai P, Liu T, Li H, Ivessa A, et al. Mst1 inhibits autophagy by promoting the interaction between Beclin1 and Bcl-2. *Nat Med* 2013;19:1478–88.
- [31] La Cava A, Matarese G. The weight of leptin in immunity. *Nat Rev Immunol* 2004;4:371–9.
- [32] Puleston DJ, Simon AK. Autophagy in the immune system. *Immunology* 2013;141:1–8.
- [33] Bhattacharya A, Eissa NT. Autophagy and autoimmunity crosstalks. *Front Immunol* 2013;4:1–7. <http://dx.doi.org/10.3389/fimmu.2013.00088>.
- [34] Ireland JM, Unanue ER. Autophagy in antigen-presenting cells results in presentation of citrullinated peptides to CD4⁺ T cells. *J Exp Med* 2011;208:2625–32. <http://dx.doi.org/10.1084/jem.20110640>.
- [35] Deretic V, Saitoh T, Akira S. Autophagy in infection, inflammation and immunity. *Nat Rev Immunol* 2013;13:722–37. <http://dx.doi.org/10.1038/nri3532>.
- [36] Clarke AJ, Ellinghaus U, Cortini A, Stranks A, Simon AK, Botto M, et al. Autophagy is activated in systemic lupus erythematosus and required for plasmablast development. *Ann Rheum Dis* 2014;1–9. <http://dx.doi.org/10.1136/annrheumdis-2013-204343>.
- [37] Harley JB, Alarcon-Riquelme ME, Criswell LA, Jacob CO, Kimberly RP, Moser KL, et al. Genome-wide association scan in women with systemic lupus erythematosus identifies susceptibility variants in ITGAM, PXX, KIAA1542 and other loci. *Nat Genet* 2008;40:204–10.
- [38] Raychaudhuri S, Thomson BP, Remmers EF, Eyre S, Hinks A, Guiducci C, et al. Genetic variants at CD28, PRDM1 and CD2/CD58 are associated with rheumatoid arthritis risk. *Nat Genet* 2009;41:1313–8.
- [39] Parkes M, Barrett JC, Prescott NJ, Tremelling M, Anderson CA, Fisher SA, et al. Sequence variants in the autophagy gene IRGM and multiple other replicating loci contribute to Crohn's disease susceptibility. *Nat Genet* 2007;39:830–2.
- [40] Procaccini C, Pucino V, De Rosa V, Marone G, Matarese G. Neuro-endocrine networks controlling immune system in health and disease. *Front Immunol* 2014;5:1–10. <http://dx.doi.org/10.3389/fimmu.2014.00143>.
- [41] Gómez R, Conde J, Scotece M, Gómez-Reino JJ, Lago F, Gualillo O. What's new in our understanding of the role of adipokines in rheumatic diseases? *Nat Rev Rheumatol* 2011;7:528–36. <http://dx.doi.org/10.1038/nrrheum.2011.107>.
- [42] Scotece M, Conde J, Lopez V, Lago F, Pino J, Gomez-Reino JJ, et al. Leptin in joint and bone diseases: new insights. *Curr Med Chem* 2013;20:3416–25.
- [43] Fraser DA, Thoen J, Reseland JE, Førre O, Kjeldsen-Kragh J. Decreased CD4⁺ lymphocyte activation and increased interleukin-4 production in peripheral blood of rheumatoid arthritis patients after acute starvation. *Clin Rheumatol* 1999;18:394–401. <http://dx.doi.org/10.1007/s100670050125>.
- [44] Yu Y, Liu Y, Shi FD, Zou H, Matarese G, La Cava A. Cutting edge: leptin-induced ROR γ t expression in CD4⁺ T cells promotes Th17 response in systemic lupus erythematosus. *J Immunol* 2013;190:3054–8. <http://dx.doi.org/10.4049/jimmunol.1203275>.
- [45] Matarese G, Sanna V, Lechler RI, Sarvetnick N, Fontana S, Zappacosta S, et al. Leptin accelerates autoimmune diabetes in female NOD mice. *Diabetes* 2002;51:1356–61. <http://dx.doi.org/10.2337/diabetes.51.5.1356>.
- [46] Matarese G, Di Giacomo A, Sanna V, Lord GM, Howard JK, Di Tuoro A, et al. Requirement for leptin in the induction and progression of autoimmune encephalomyelitis. *J Immunol* 2001;166:5909–16.
- [47] Sanna V, Di Giacomo A, La Cava A, Lechler RI, Fontana S, Zappacosta S, et al. Leptin surge precedes onset of autoimmune encephalomyelitis and correlates with development of pathogenic T cell responses. *J Clin Invest* 2003;111:241–50. <http://dx.doi.org/10.1172/JCI200316721>.