

# Alleviation and Sanctions in Social Dilemma Games

Drouvelis, Michalis

DOI:  
[10.3390/g6030368](https://doi.org/10.3390/g6030368)

License:  
Creative Commons: Attribution (CC BY)

*Document Version*  
Publisher's PDF, also known as Version of record

*Citation for published version (Harvard):*  
Drouvelis, M 2015, 'Alleviation and Sanctions in Social Dilemma Games', *Games*, vol. 6, no. 3, pp. 368-380.  
<https://doi.org/10.3390/g6030368>

[Link to publication on Research at Birmingham portal](#)

## **Publisher Rights Statement:**

This is an open access article distributed under the Creative Commons Attribution License which permits unrestricted use, distribution, and reproduction in any medium, provided the original work is properly cited.

Checked November 2015

## **General rights**

Unless a licence is specified above, all rights (including copyright and moral rights) in this document are retained by the authors and/or the copyright holders. The express permission of the copyright holder must be obtained for any use of this material other than for purposes permitted by law.

- Users may freely distribute the URL that is used to identify this publication.
- Users may download and/or print one copy of the publication from the University of Birmingham research portal for the purpose of private study or non-commercial research.
- User may use extracts from the document in line with the concept of 'fair dealing' under the Copyright, Designs and Patents Act 1988 (?)
- Users may not further distribute the material nor use it for the purposes of commercial gain.

Where a licence is displayed above, please note the terms and conditions of the licence govern your use of this document.

When citing, please reference the published version.

## **Take down policy**

While the University of Birmingham exercises care and attention in making items available there are rare occasions when an item has been uploaded in error or has been deemed to be commercially or otherwise sensitive.

If you believe that this is the case for this document, please contact [UBIRA@lists.bham.ac.uk](mailto:UBIRA@lists.bham.ac.uk) providing details and we will remove access to the work immediately and investigate.

Article

## Alleviation and Sanctions in Social Dilemma Games

Michalis Drouvelis

Department of Economics, University of Birmingham, Edgbaston, Birmingham B15 2TT, UK;  
E-Mail: m.drouvelis@bham.ac.uk; Tel.: +44-(0)-121-4146040

Academic Editor: Ananish Chaudhuri

Received: 29 June 2015 / Accepted: 16 September 2015 / Published: 21 September 2015

---

**Abstract:** This paper reports an experiment which compares behaviour in two punishment regimes: (i) a standard public goods game with punishment in which subjects are given the opportunity to punish other group members (democratic punishment regime) and (ii) a public goods game environment where all group members exogenously experience an automatic reduction of their income (irrespective of their behaviour) and are given the opportunity to alleviate the automatic penalty (undemocratic punishment regime). We employ a within-subjects design where subjects experience both environments and control for order effects by alternating their sequence. Our findings indicate that average contributions and earnings in the undemocratic punishment environment are significantly lower relative to the standard public goods game with punishment. We also observe that in the undemocratic environment average contributions decay over time only when subjects have experienced the standard public goods game with punishment. As a result, alleviation is significantly less when subjects have experienced the standard public goods game with punishment compared to when they do not have such experience. However, the assignment of punishment is robust irrespective of the order in which the games are played.

**Keywords:** cooperation; reciprocity; alleviation; sanctions; public good experiments

**JEL Codes:** C9; D7; H4

---

### 1. Introduction

A central theme in the behavioural sciences is the examination of the ability of punishment regimes, where sanctioning is assigned endogenously by group members to their peers, to regulate self-interested behaviour in social dilemma games (as in [1,2]). We refer to these environments as

“democratic punishment regimes”. Numerous laboratory experiments on public goods have shown that such democratic punishment regimes foster high cooperation rates (for recent overviews, see [3,4]). However, this cooperation enhancing effect has been found to be sensitive to a number of factors, such as low effectiveness of punishment (see [5–8]), second-round punishment opportunities (see [9–11]), and antisocial punishment (see [4,12,13]). The evidence from these experiments suggests that, under certain conditions, peer punishment can have little or negative effect on cooperation. The aim of this paper is to explore experimentally how subjects respond in a democratic punishment regime when they have experience with an undemocratic punishment regime and *vice versa*.

To generate an undemocratic punishment regime, we propose a variant of the standard punishment game, which we refer to as the “default punishment game”. In this game, group members participate in a two-stage game. In the first stage, they are engaged in a standard linear public goods game, in which they have to decide how much of their initial endowment they are willing to contribute to the public good (see [14]). The game is parameterized so that it captures the tension between personal interests and social benefits. At the beginning of the second stage, we introduce a new element: each group member’s income is *exogenously* reduced by a fixed automatic penalty imposed on them—the default punishment. This implies that all group members unconditionally receive a decrease in their monetary income, irrespective of their first stage behaviour. During the second stage, after contribution decisions have been anonymously revealed, subjects are given the opportunity to alleviate the exogenous default punishment of others at some cost to themselves. Our environment has the interesting feature that the fixed income reduction does not depend on the individual behaviour. The automatic penalty is undemocratic in the sense that it is exogenously implemented and the sanctioning mechanism is not being any more social as it cannot identify individual defectors or cooperators.<sup>1</sup> We thus assume that our punishment regime generates a less democratic environment in relation to the standard punishment game where punishment is meted out endogenously by group members.

Our paper is also related to the literature examining behaviour in situations where subjects are given the possibility (typically using voting procedures) to choose the public goods game environment they would like to interact in, as well as the punishment rules governing these environments (e.g., [16–19]).<sup>2</sup> In sum, this literature suggests that letting subjects democratically choose which regime they prefer positively affects cooperative behaviour.

In our paper, the automatic penalty is exogenously assigned to all group members (including those with cooperative attitudes) and it is in this respect that our punishment regime is undemocratic. By having subjects experience an undemocratic punishment environment before they play the standard punishment game, we can assess whether our undemocratic environment impacts on individuals’

---

<sup>1</sup> The effects of blind punishment on public good provision have been recently studied by [15]. In particular, they use a punishment mechanism based on random exclusions. Yet, their design is distinctive to ours in two main respects concerning the rules governing the implementation of punishment. First, their punishment scheme is still social and pursues a collective goal. Good teams were never punished under their sanctioning system. Second, unlike our experiment where subjects are given the opportunity to alleviate the automatic penalty, in their design there is no second stage in which individuals can correct the unfairness of the blind punishment. Their findings suggest that random exclusions generate more public good provision (compared to a standard public good game without punishment) and promote efficiency in a significant way.

<sup>2</sup> For a review of the experimental literature on the workings of democratic institutions, see [20].

expectations of how punishment works. We also reverse the order of the two games. This allows us to test whether, and if so how, experience of a democratic punishment regime affects behaviour in the undemocratic punishment regime.

Our findings indicate that more pronounced detrimental effects on behaviour are present in the undemocratic punishment regime when subjects have experienced the democratic punishment regime. However, this is not the case for the democratic punishment regime where behaviour is not affected by the experience (or not) of the undemocratic default punishment game. Overall, we find that performance in the undemocratic punishment regime is worse in relation to the democratic one.

The remainder of the paper is organised as follows. Section 2 presents the design and the procedures of the experiment. Section 3 reports the results and Section 4 concludes.

## 2. Experimental Design and Procedures

### 2.1. Experimental Design

To address our research questions, we implemented a within-subjects design which consists of two conditions: the “default punishment condition” (D-condition) and the “standard punishment condition” (S-condition). We alternated the order of the two conditions, enabling us to control for potential order effects. This resulted in including two sequences in our experiment: the DS sequence, in which the D-condition is followed by the S-condition and the SD sequence, in which the S-condition is followed by the D-condition.

In each condition, subjects interacted in a two-stage game for 10 periods. The group composition remained fixed across all 20 periods within a sequence (Partners’ matching protocol). The first stage of the game was common to both conditions involving a voluntary contributions mechanism game with linear payoffs. During the first stage, subjects, being randomly assigned to a four-person group, are privately endowed with 20 tokens each and have to decide how many of these to keep for themselves and how many to contribute to a public good (described to subjects as “project”). For each token kept, each subject earns 1 Money Unit (MU); whereas, for each token contributed the return is equal to 0.5 MUs, resulting in a total of 2 MUs for the whole group. Subjects make their decisions simultaneously and in private. At the end of the first stage they are informed about the sum of the contributions to the public good made by the whole group and about their own first stage income. The payoff function for a given subject in the first stage is given by Equation (1):

$$\pi_i^1 = 20 - g_i + 0.5 \cdot (g_i + \sum_{j=1}^3 g_{j \neq i}) \quad (1)$$

where  $g_i$  ( $0 \leq g_i \leq 20$ ) denotes the number of tokens contributed to the public good by group member  $i$ .

After the first stage has finished, a second stage follows. The structure of the second stage differs between the D-condition and the S-condition. We thus discuss the second stage of each condition in turn.

### 2.1.1. The D-Condition

At the beginning of the second stage of the D-condition, all group members incur an automatic penalty irrespective of their first stage contributions, which we refer to “default punishment”.<sup>3</sup> In this stage, a group member can see the profile of contributions of the other three group members and is given the opportunity to alleviate the automatic penalty of other group members. Alleviating the automatic penalty is costly for the person who alleviates, but beneficial for the person receiving the alleviation. Subjects could assign between 0 and 2 adjustment points to each other group member. Assignment of adjustment points costs the person who alleviates 1 MU; whereas the impact of assigning one adjustment point is equal to 3 MUs.

In our experiment, the automatic penalty was set equal to 10 MUs. We did so for two reasons. First, complete alleviation of the automatic penalty was possible only if the majority of the group members decided to assign adjustment points. Since each group member can assign up to 2 adjustment points, with each point decreasing the automatic penalty by 3 MUs, the automatic penalty is fully alleviated only if two or more group members assign the total amount of points they control. Second, we did not want to create a situation where subjects would be very likely to end up with substantial losses due to the automatic penalty at the end of the experiment. In this case, subjects would receive a large lump sum payment to cover possible losses in the D-condition, which could affect their behaviour.

The payoff function for a given subject in the D-condition is given by Equation (2):

$$\pi_i = \pi_i^1 - 10 - \sum_{j \neq i} p_{ij} + 3 \cdot \sum_{j \neq i} p_{ji} \quad (2)$$

where  $\pi_i^1$  denotes the first stage income (as indicated in Equation (1)),  $p_{ij}$  denotes the number of adjustment points that group member  $i$  assigns to group member  $j$  and  $p_{ji}$  denotes the number of points assigned by  $j$  to  $i$ . Note that if a subject received more adjustment points than the automatic penalty, their income could not increase by this extra amount.

At the end of the second stage, subjects were informed about their own cost of assigning adjustment points, the total number of adjustment points assigned to them, and their earnings. No information about the number of adjustment points received by each group member was available.

### 2.1.2. The S-Condition

Contrary to the D-condition, the second stage of the S-condition does not include any automatic penalty. After a group member observes the profile of contributions of the other three group members from the first stage, s/he is given the opportunity to decrease each other group members' income by assigning adjustment points. The assignment of adjustment points is costly both for the punisher and the recipient of the punishment. Each adjustment point assigned costs the punisher 1 MU. For each adjustment point, the recipient's income decreases by 3 MUs. As in the D-condition, subjects can assign up to 2 adjustment points. The payoff function for a given subject in the D-condition is given by Equation (3):

---

<sup>3</sup> In the instructions, at the beginning of the second stage, we specify that the default punishment applies to each group member. In particular, we mention “Regardless of contributions, you will also receive an automatic penalty of 10 Money Units.” A copy of the instructions used in the experiment is provided in the Supplementary Material.

$$\pi_i = \pi_i^1 - \sum_{j \neq i} p_{ij} - 3 \cdot \sum_{j \neq i} p_{ji} \quad (3)$$

where  $\pi_i^1$  denotes the first stage income (as indicated in equation (1)),  $p_{ij}$  denotes the number of adjustment points that group member  $i$  assigns to group member  $j$  and  $p_{ji}$  denotes the number of points assigned by  $j$  to  $i$ .

At the end of the second stage, subjects received the same feedback information as in the D-condition. Note also that, in both conditions, subject-specific reputations cannot develop across periods, since subject  $i$  does not have the information to construct a link between individual contributions of subject  $j$  across periods. Since subject-specific reputations cannot build up, the possibility that player  $i$  assigns adjustment points to player  $j$  in period  $t$  for contribution decisions made in a previous period from  $t$  is ruled out.

Conditional on each group member  $i$  being motivated to maximise Equations (2) and (3), the unique subgame perfect equilibrium requires that, in both conditions, each group member free rides completely in the first stage and refrains completely from assigning adjustment points in the second stage.

## 2.2. Procedures

All sessions took place in April and May 2008 in the Centre for Decision Research and Experimental Economics (CeDEx) lab. Recruitment was conducted via the software ORSEE ([21]) at the University of Nottingham using subjects from a university-wide pool of registered students. All conditions were computerized and programmed with the software z-Tree ([22]). At the beginning of each sequence, subjects received instructions for the first condition and at the end of it for the second condition. Subjects were informed that the session consists of two conditions in order to reduce the possibility for having wrong expectations about the nature of the experiment. However, they were not told what will happen in the second condition. All participants answered several test questions, concerning the calculation of payoffs for various hypothetical configurations of behaviour. None of the conditions proceeded until every subject had answered these questions correctly. Each of the two sequences was conducted twice, yielding a total of 4 sessions. In the DS sequence 40 subjects participated, resulting in 10 independent observations; while in the SD sequence 36 subjects participated, resulting in 9 independent observations.

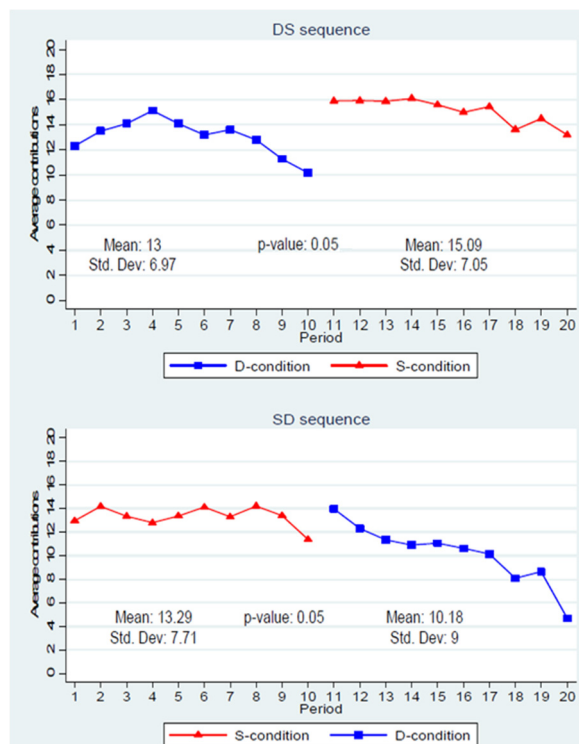
At the end of a sequence, subjects were privately paid according to their accumulated earnings from all 20 periods, using an exchange rate of £0.015 per MU. Average earnings per sequence were as follows: £10.45 for the DS sequence and £9.48 for the SD sequence. Sessions lasted, on average, 75 min.

## 3. Results

### 3.1. Contribution Levels

Finding 1. (a) Average contributions are significantly lower in the D-condition compared to the S-condition within a given sequence. (b) In the D-condition, average contributions decline over time only when subjects already have experienced the S-condition.

*Support.* We begin our data analysis by looking at how contribution levels evolved in each sequence. Data are presented as the amount of tokens contributed to the group account. Starting with the DS sequence, we find that subjects' mean contributions were 13 and 15.09 tokens for the D- and the S-conditions, respectively. Regarding the SD sequence, average contributions across all ten periods were 13.29 tokens for the S-condition and 10.18 tokens for the D-condition. Figure 1 shows the evolution of average contribution levels in each sequence separately. In each panel, we report the mean contributions across periods for each condition, the corresponding standard deviation and the p-values from a Wilcoxon signed-rank test for within sequence comparisons.<sup>4</sup>



**Figure 1.** Time series of average contributions for the DS and SD sequences.

Figure 1 shows that contributions over time are stable in both of the S-conditions in either sequences. This is in line with existing findings in the literature of public good games with punishment (e.g., [1]). However, we observe that the contribution patterns of the D-conditions are not stable over time. In the SD sequence, contributions initially increase during the first half of the D-condition and then follow a decaying pattern over the second half. In the DS sequence, we observe that contributions decline over time. By performing a Wilcoxon sign rank test, we find significant within-subject differences across conditions in each sequence. Specifically, in relation to the S-condition, subjects contribute significantly less in the D-condition of the DS sequence ( $p = 0.05$ ) and of the SD sequence ( $p = 0.05$ ).<sup>5</sup>

<sup>4</sup> Note that since subjects' matching was fixed across all periods within a sequence, we treat each matching group as the unit of independent observation.

<sup>5</sup> By contrast, in all but one between-subject comparisons we do not obtain significant differences in contributions ( $p > 0.37$ ). The only exception is the comparison of the S-condition (DS sequence) with the D-condition (SD sequence) where average contributions are significantly higher in the former relative to the latter condition ( $p = 0.07$ ).

Our econometric analysis corroborates these findings when we perform OLS regressions that test for differences across conditions within each sequence, controlling for time trends.<sup>6</sup> We estimate four OLS regressions, in which the dependent variable is the contribution to the group account. In Models (1a) and (1b) we focus on the DS sequence and in Models (2a) and (2b) we focus on the SD sequence. The independent variables for Models (1a) and (2a) consist of a dummy variable for a condition and period, which is equal to the actual number of periods. In Models (1a) and (1b) the dummy variable called “S-condition” is equal to 1 for the S-condition and 0 for the D-condition, whereas in Models (2a) and (2b) the dummy variable called “D-condition” is equal to 1 for the D-condition and 0 for the S-condition. We include the interaction between the treatment dummy and period in Models (1b) and (2b). The regression results are reported in Table 1.

**Table 1.** Differences in contribution levels within a sequence—Regression results.

Dependent Variable: Contribution to the Group Account				
	DS Sequence		SD Sequence	
	Model 1(a)	Model 1(b)	Model 2(a)	Model 2(b)
S-condition	2.09 ** (0.833)	2.142 ** (0.831)		
D-condition			−3.117 ** (1.063)	0.719 (1.785)
Period	−0.287 (0.190)	−0.282 (0.217)	−0.428 *** (0.088)	−0.080 (0.169)
S-condition × Period		−0.009 (0.130)		
D-condition × Period				−0.697 * (0.318)
Constant	14.579 *** (1.195)	14.553 *** (1.252)	15.647 *** (2.002)	13.730 *** (1.522)
Obs.	800	800	720	720

Note: OLS estimates. Robust standard errors (clustered on independent matching groups) are presented in parentheses. In Models (1a) and (1b) the dummy variable called “S-condition” is equal to 1 for the S-condition and 0 for the D-condition, whereas in Model (2a) and (2b) the dummy variable called “D-condition” is equal to 1 for the D-condition and 0 for the S-condition. The variable “Period” is equal to the actual number of periods. \* denotes significance at the 10-percent level, \*\* denotes significance at the 5-percent level and \*\*\* denotes significance at the 1-percent level.

The regression coefficients of Models (1a) and (1b) indicate that subjects contribute significantly more in the S-condition relative to the D-condition of the DS sequence. Additionally, we find no significant time trends for the evolution of contributions in the D-condition as well as in the S-condition (as the variable “Period” and the interaction term between the dummy variable “S-condition” and “Period” are not statistically significant at conventional levels). When we look at Model (2a), we find that contributions are significantly lower in the D-condition compared to the S-condition of the SD sequence. Furthermore, in Model (2b), we find that contributions do not decline over time in the S-condition (as the variable “Period” is insignificant). However, the contribution pattern seems to be different in the D-condition (as the interaction term between the treatment dummy variable “D-condition” and “Period” is negative and statistically significant). When we perform a post-estimation test for the variables “Period” and the respective interaction term, we find that contributions are decaying over time in the D-condition ( $p = 0.00$ ).

<sup>6</sup> We obtain similar results when we estimate linear mixed and Tobit regression models. We report these regressions in Appendix A (see Tables A1 and A2, respectively).



### 3.2. Alleviation and Sanctions

Finding 2: (a) Subjects alleviate significantly more in the D-condition of the DS sequence compared to the D-condition of the SD sequence. (b) Subjects do not sanction significantly differently in the S-condition of the DS sequence compared to the S-condition of the SD sequence.

*Support.* We next turn our attention to how alleviation and sanctions were assigned in the respective conditions. We first examine whether the alleviation functions differ by estimating an ordered probit regression model which controls for factors that are likely to affect alleviation behaviour such as positive and negative deviations. As dependent variable, we include the number of points that player  $i$  assigns to player  $j$ . The independent variables consist of: “Player  $j$ ’s absolute negative (contribution) deviation”, “Player  $j$ ’s positive (contribution) deviation”, and the dummy variable called “D-condition (DS sequence)”. We also include two interaction terms, which indicate whether the slope of the alleviation function differs with respect to negative and positive deviations across the two D-conditions. Note that all deviations are calculated with respect to the player  $i$ ’s contribution. The variable “Player  $j$ ’s absolute negative (contribution) deviation” is the absolute value of the actual deviation of player  $j$ ’s contribution from player  $i$ ’s contribution, when player  $j$ ’s contribution is below player  $i$ ’s contribution; and zero otherwise. The variable “Player  $j$ ’s positive (contribution) deviation” is constructed in an analogous way. The dummy variable “D-condition (DS sequence)” equals 1 for the D-condition of the DS sequence and 0 for the D-condition of the SD sequence.

Table 2 reveals two important observations. First, the coefficient of the dummy variable “D-condition (DS sequence)” has a positive sign and is statistically significant at the 5% level, implying that the intercept of the alleviation function is different across our two sequences. This implies that subjects in the D-condition of the DS sequence alleviate more points compared to subjects in the D-condition of the SD sequence. Additionally, the coefficients of the interaction term between negative deviations and the dummy variable “D-condition (DS sequence)” is negative and statistically significant at the 1% level, suggesting that the slope of the alleviation function is steeper in the D-condition of the DS sequence compared to the D-condition of the SD sequence. This is not the case for positive deviations where the slope of the alleviation function does not differ across sequences.

We next analyse punishment behaviour by contrasting second stage behaviour in the S-condition of the SD condition versus the S-condition of the DS sequence. To do this, we estimate an ordered probit model which controls for factors that are likely to affect punishment behaviour such as positive and negative deviations. As dependent variable, we include the number of points that player  $i$  assigned to player  $j$ . The independent variables consist of: “Player  $j$ ’s absolute negative (contribution) deviation”, “Player  $j$ ’s positive (contribution) deviation”, and the dummy variable called “S-condition (SD sequence)”. We also include two interaction terms, which indicate whether the slope of the punishment function differs with respect to negative and positive deviations across the two S-conditions. Note that all deviations are calculated with respect to the player  $i$ ’s contribution. The variables “Player  $j$ ’s absolute negative (contribution) deviation” and “Player  $j$ ’s positive (contribution) deviation” are defined as above. The dummy variable “S-condition (SD sequence)” equals 1 for the S-condition of the SD sequence and 0 for the S-condition of the DS sequence.

**Table 2.** The alleviation function—Regression results.

	<b>Dependent Variable: Alleviation Assigned by Player <i>i</i> to player <i>j</i></b>
Player <i>j</i> 's absolute negative (contribution) deviation	−0.040 (0.030)
Player <i>j</i> 's positive (contribution) deviation	−0.010 (0.021)
D-condition (DS sequence)	0.759 ** (0.334)
D-condition (DS sequence) × Absolute negative deviation	−0.133 *** (0.036)
D-condition (DS sequence) × Positive deviation	−0.039 (0.027)
Obs.	2280

Notes: Ordered probit estimates. Standard errors are presented in parentheses (clustered on independent matching groups). The variable “Player *j*'s absolute negative (contribution) deviation” is the absolute value of the actual deviation of player *j*'s contribution from player *i*'s contribution, when player *j*'s contribution is below player *i*'s contribution; and zero otherwise. The variable “Player *j*'s positive (contribution) deviation” is constructed in an analogous way. The dummy variable “D-condition (DS sequence)” equals 1 for the D-condition of the DS sequence and 0 for the D-condition of the SD sequence. \*\* denotes significance at the 5-percent level, and \*\*\* at the 1-percent level.

The results from Table 3 indicate that the vertical intercept of the punishment function does not differ across the two sequences, since the coefficient of the dummy variable “S-condition (SD sequence)” is not statistically significant. The coefficients of the interaction terms are also insignificant, implying that the slope of the punishment function with regard both to negative and positive deviations is the same, irrespective of the sequence. The only variable that has a significant effect on the assignment of punishment is the absolute negative deviation from the punisher's contributions: a subject punishes a co-player more, the less the co-player contributes relative to the punisher. This is in line with previous literature from public good games (e.g., [1,23]) indicating that the punishment function is negatively sloped.

**Table 3.** The punishment function—Regression results.

	<b>Dependent Variable: Punishment Assigned by Player <i>i</i> to Player <i>j</i></b>
Player <i>j</i> 's absolute negative (contribution) deviation	0.153 *** (0.025)
Player <i>j</i> 's positive (contribution) deviation	−0.027 (0.021)
S-condition (SD sequence)	0.181 (0.263)
S-condition (SD sequence) × Absolute negative deviation	0.002 (0.028)
S-condition (SD sequence) × Positive deviation	−0.008 (0.026)
Obs.	2,280

Notes: Ordered probit estimates. Standard errors are presented in parentheses (clustered on independent matching groups). The variable “Player *j*'s absolute negative (contribution) deviation” is the absolute value of the actual deviation of player *j*'s contribution from player *i*'s contribution, when player *j*'s contribution is below player *i*'s contribution; and zero otherwise. The variable “Player *j*'s positive (contribution) deviation” is constructed in an analogous way. The dummy variable “S-condition (SD sequence)” equals 1 for the S-condition of the SD sequence and 0 for the S-condition of the DS sequence. \*\*\* denotes significance at the 1-percent level.

### 3.3. Average Earnings

Finding 3: Average earnings are significantly lower in the D-condition compared to the S-condition within a given sequence.

*Support.* In this section we explore how efficiency (as measured by subjects' net average earnings) was determined in each condition. Table 4 presents the average net earnings in each condition and sequence, separately.

**Table 4.** Average earnings for each condition and sequence.

	<b>D-Condition</b>	<b>S-Condition</b>
DS sequence	25.88 (7.80)	31.75 (7.28)
SD sequence	22.16 (10.04)	29.07 (8.83)

Note: Earnings are measured in Money Units (MUs). Standard deviations in parentheses.

In either sequences the S-condition yields higher welfare (31.75 MUs in the DS sequence and 29.07 MUs in the SD sequence) compared to the D-condition (25.88 MUs in the DS sequence and 22.16 MUs in the SD sequence). By performing a Wilcoxon sign rank test, we test for differences in earnings within a given sequence. We find that the S-condition yields higher welfare than the D-condition both in the DS sequence ( $p = 0.01$ ) and the SD sequence ( $p = 0.01$ ).<sup>7</sup>

## 4. Concluding Remarks

In this paper, we report an experiment examining how an undemocratic public goods game (D-condition) affects behaviour in a standard public goods game with punishment (S-condition) and *vice versa*. Specifically, in our experiment, we introduce an environment where an automatic penalty is meted out exogenously to all group members (unconditionally and by default), irrespective of their prior behaviour. Subjects are then given the opportunity to alleviate the automatic penalty from others by assigning adjustment points to them. We refer to this game as the default punishment game.

Our findings show that average contributions and earnings are significantly lower in the default punishment game compared to the standard punishment game. We also find that contributions in the default punishment game decline over time only after the experience of the standard public goods game with punishment. This decaying pattern of contributions is explained by differences in how alleviation occurs: subjects alleviate other group members significantly less when they first experience the standard public good game with punishment compared to when they have no such experience.

Our results indicate significant order effects in relation to how subjects respond in the less democratic default punishment regime. However, this is not the case for the standard public good game with punishment where the contribution levels remain robust over time and the assignment of punishment is unaffected irrespective of whether subjects have experienced previously the default punishment game or not.

<sup>7</sup> We find insignificant differences across conditions in all pairwise between-subject comparisons ( $p > 0.22$ ) except for the comparison of the S-condition (DS sequence) with the D-condition (SD sequence) where average earnings are significantly higher in the former relative to the latter condition ( $p = 0.02$ ).

We see at least two avenues for future research. First, investigating the perception of automatic penalty in subject pools with high levels of antisocial punishment may lead to interesting insights on the behavioural consequences of the default punishment game. Second, in the light of previous research (e.g., [5,6]) suggesting that if norm adherence or enforcement becomes more costly, norms are more likely to collapse, it will be of interest to analyse whether and if so, how the size of automatic penalty impacts on the sustainability of social norms.

## Acknowledgments

We would like to thank James Cox, Robin Cubitt, Eamonn Ferguson, Simon Gächter, John Hey, the handling editor, Ananish Chaudhuri, and three anonymous reviewers for valuable comments and suggestions. The paper has also benefited from comments by seminar participants at the University of Nottingham and the ESA Meetings in Innsbruck (2009) and in Copenhagen (2010). Financial support from the ESRC (PTA-030-2005-00608) and the University of Nottingham is gratefully acknowledged.

## Conflicts of Interest

The author declares no conflict of interest.

## Appendix A—Regression Results

**Table A1.** Differences in contribution levels within a sequence—Regression results.

	Dependent Variable: Contribution to the Group Account			
	DS Sequence		SD Sequence	
	Model 1(a)	Model 1(b)	Model 2(a)	Model 2(b)
S-condition	2.09 ** (0.832)	2.142 ** (0.829)		
D-condition			−3.117 *** (1.062)	0.719 (1.782)
Period	−0.287 (0.190)	−0.282 (0.217)	−0.428 *** (0.088)	−0.080 (0.168)
S-condition × Period		−0.009 (0.130)		
D-condition × Period				−0.697 ** (0.318)
Constant	14.579 *** (1.193)	14.553 *** (1.249)	15.647 *** (2.000)	13.730 *** (1.519)
Obs.	800	800	720	720

Note: Linear mixed model estimates at independent matching group level. Robust standard errors are presented in parentheses. In Models (1a) and (1b) the dummy variable called “S-condition” is equal to 1 for the S-condition and 0 for the D-condition, whereas in Model (2a) and (2b) the dummy variable called “D-condition” is equal to 1 for the D-condition and 0 for the S-condition. The variable “Period” is equal to the actual number of periods. \*\* denotes significance at the 5-percent level and \*\*\* denotes significance at the 1-percent level.

**Table A2.** Differences in contribution levels within a sequence—Regression results.

	Dependent variable: Contribution to the Group Account			
	DS Sequence		SD Sequence	
	Model 1(a)	Model 1(b)	Model 2(a)	Model 2(b)
S-condition	4.676 ** (2.260)	5.395 * (2.864)		
D-condition			−7.313*** (2.192)	4.908 (6.640)
Period	−0.550 (0.436)	−0.488 (0.459)	−1.062*** (0.290)	0.028 (0.581)
S-condition × Period		−0.131 (0.335)		
D-condition × Period				−2.232 * (1.141)
Constant	18.557 *** (3.216)	18.222 *** (2.864)	24.058 *** (6.023)	18.096 *** (4.100)
Obs.	800	800	720	720

Note: Tobit estimates. Standard errors presented in parentheses (clustered on independent matching groups) are presented in parentheses. In Models (1a) and (1b) the dummy variable called “S-condition” is equal to 1 for the S-condition and 0 for the D-condition, whereas in Model (2a) and (2b) the dummy variable called “D-condition” is equal to 1 for the D-condition and 0 for the S-condition. The variable “Period” is equal to the actual number of periods. \* denotes significance at the 10-percent level, \*\* denotes significance at the 5-percent level and \*\*\* denotes significance at the 1-percent level.

## References

1. Fehr, E.; Gächter, S. Cooperation and Punishment in Public Goods Experiments. *Am. Econ. Rev.* **2000**, *90*, 980–994.
2. Fehr, E.; Gächter, S. Altruistic Punishment in Humans. *Nature* **2002**, *415*, 137–140.
3. Chaudhuri, A. Sustaining cooperation in laboratory public goods experiments: A selective survey of the literature. *Exp. Econ.* **2011**, *14*, 47–83.
4. Gächter, S. Herrmann, B. Reciprocity, culture and human cooperation: Previous insights and a new cultural experiment. *Philos. Trans. R. Soc. B Biol. Sci.* **2009**, *364*, 761–806.
5. Anderson, C.; Putterman, L. Do non-strategic sanctions obey the law of demand? The demand for punishment in the voluntary contribution mechanism. *Games Econ. Behav.* **2006**, *54*, 1–24.
6. Carpenter, J. The demand for Punishment. *J. Econ. Behav. Organ.* **2007**, *62*, 522–542.
7. Egas, M.; Riedl, A. The economics of altruistic punishment and the maintenance of cooperation. *Proc. R. Soc. B Biol. Sci.* **2008**, *275*, 871–878.
8. Nikiforakis, N.; Normann, H.-T. A comparative static analysis of punishment in public-good experiment. *Exp. Econ.* **2008**, *11*, 358–369.
9. Cinyabuguma, M.; Page, T.; Putterman, L. Can second-order punishment deter perverse punishment? *Exp. Econ.* **2006**, *9*, 265–279.
10. Denant-Boemont, L.; Masclet, D.; Noussair, C. Punishment, counterpunishment and sanction enforcement in a social dilemma experiment. *Econ. Theory* **2007**, *33*, 145–167.
11. Nikiforakis, N. Punishment and Counter-Punishment in Public Goods Game: Can we still govern ourselves? *J. Public Econ.* **2008**, *92*, 91–112.
12. Gächter, S., Herrmann, B. The Limits of Self-Governance when Cooperators Get Punished: Experimental Evidence from Urban and Rural Russia. *Eur. Econ. Rev.* **2011**, *55*, 193–210.
13. Herrmann, B.; Thöni, C.; Gächter, S. Antisocial punishment across societies. *Science* **2008**, *319*, 1362–1367.

14. Ledyard, J. Public Goods: A Survey of Experimental Research. In *Handbook of Experimental Economics*; Kagel, J.H., Roth, A.E., Eds.; Princeton University Press: Princeton, NJ, USA, 1995; pp. 111–194.
15. Fatas, E.; Morales, A.J.; Ubeda, P. Blind Justice: An experimental analysis of random punishment in team production. *J. Econ. Psychol.* **2010**, *31*, 358–373.
16. Ertan, A.; Page, T.; Putterman, L. Who to punish? Individual decisions and majority rule in mitigating the free rider problem. *Eur. Econ. Rev.* **2009**, *53*, 495–511.
17. Kamei, K.; Putterman, L.; Tyran, J.-R. State or nature? Endogenous formal versus informal sanctions in the voluntary provision of public goods. *Exp. Econ.* **2015**, *18*, 38–65.
18. Markussen, T.; Putterman, L.; Tyran, J.-R. Self-organization for collective action: an experimental study of voting on sanction regimes. *Rev. Econ. Stud.* **2014**, *81*, 301–324.
19. Putterman, L.; Tyran, J.-R.; Kamei, K. Public Goods and Voting on Formal Sanction Schemes. *J. Public Econ.* **2011**, *95*, 1213–1222.
20. Dal Bó, P. Experimental Evidence on the Workings of Democratic Institutions, Working Paper 2010. Available Online: [http://www.econ.brown.edu/fac/Pedro\\_Dal\\_Bo/institutionschapter.pdf](http://www.econ.brown.edu/fac/Pedro_Dal_Bo/institutionschapter.pdf) (accessed on 15 September 2015).
21. Greiner, B. Subject Pool Recruitment Procedures: Organizing Experiments with ORSEE. *J. Econ. Sci. Assoc.* **2015**, *1*, 114–125.
22. Fischbacher, U. z-Tree: Zurich Toolbox for Ready-made Economic Experiments. *Exp. Econ.* **2007**, *10*, 171–178.
23. Cubitt, R.P.; Drouvelis, M.; Gächter, S. Framing and free riding: Emotional responses and punishment in social dilemma games. *Exp. Econ.* **2011**, *14*, 254–272.

© 2015 by the authors; licensee MDPI, Basel, Switzerland. This article is an open access article distributed under the terms and conditions of the Creative Commons Attribution license (<http://creativecommons.org/licenses/by/4.0/>).