

Exploiting cell-mediated contraction and adhesion to structure tissues in vitro

Wudebwe, U. N. G.; Bannerman, A.; Goldberg-oppenheimer, P.; Paxton, J. Z.; Williams, Richard; Grover, L. M.

DOI:

[10.1098/rstb.2014.0200](https://doi.org/10.1098/rstb.2014.0200)

[10.1098/rstb.2014.0200](https://doi.org/10.1098/rstb.2014.0200)

License:

Creative Commons: Attribution (CC BY)

Document Version

Publisher's PDF, also known as Version of record

Citation for published version (Harvard):

Wudebwe, UNG, Bannerman, A, Goldberg-oppenheimer, P, Paxton, JZ, Williams, R & Grover, LM 2015, 'Exploiting cell-mediated contraction and adhesion to structure tissues in vitro', *Royal Society of London. Proceedings B. Biological Sciences*, vol. 370, no. 1661, 20140200. <https://doi.org/10.1098/rstb.2014.0200>, <https://doi.org/10.1098/rstb.2014.0200>

[Link to publication on Research at Birmingham portal](#)

Publisher Rights Statement:

Eligibility for repository : checked 09/01/2015

General rights

Unless a licence is specified above, all rights (including copyright and moral rights) in this document are retained by the authors and/or the copyright holders. The express permission of the copyright holder must be obtained for any use of this material other than for purposes permitted by law.

- Users may freely distribute the URL that is used to identify this publication.
- Users may download and/or print one copy of the publication from the University of Birmingham research portal for the purpose of private study or non-commercial research.
- User may use extracts from the document in line with the concept of 'fair dealing' under the Copyright, Designs and Patents Act 1988 (?)
- Users may not further distribute the material nor use it for the purposes of commercial gain.

Where a licence is displayed above, please note the terms and conditions of the licence govern your use of this document.

When citing, please reference the published version.

Take down policy

While the University of Birmingham exercises care and attention in making items available there are rare occasions when an item has been uploaded in error or has been deemed to be commercially or otherwise sensitive.

If you believe that this is the case for this document, please contact UBIRA@lists.bham.ac.uk providing details and we will remove access to the work immediately and investigate.



click for updates

Cite this article: Wudebwe UNG, Bannerman A, Goldberg-Oppenheimer P, Paxton JZ, Williams RL, Grover LM. 2015 Exploiting cell-mediated contraction and adhesion to structure tissues *in vitro*. *Phil. Trans. R. Soc. B* **370**: 20140200.
<http://dx.doi.org/10.1098/rstb.2014.0200>

One contribution of 19 to a discussion meeting issue 'Cell adhesion century: culture breakthrough'.

Subject Areas:

structural biology, physiology, synthetic biology, biomaterials

Keywords:

extracellular matrix, ligament, tendon, tissue engineering, collagen, ceramic

Author for correspondence:

Liam M. Grover
e-mail: l.m.grover@bham.ac.uk

Exploiting cell-mediated contraction and adhesion to structure tissues *in vitro*

Uchena N. G. Wudebwe¹, Alistair Bannerman¹, Pola Goldberg-Oppenheimer¹, Jennifer Z. Paxton², Richard L. Williams¹ and Liam M. Grover¹

¹School of Chemical Engineering, University of Birmingham, Birmingham B15 2TT, UK

²School of Biomedical Sciences, University of Edinburgh, Edinburgh EH8 9AG, UK

Progress in tissue engineering is now impacting beyond the field of regenerative medicine. Engineered tissues are now used as tools to evaluate the toxicity of compounds or even to enable the modelling of disease. While many of the materials that are used to facilitate tissue growth are designed to enable cell attachment, many researchers consider that the contraction and modification of these matrices by attached cells is not desirable and take measures to prevent this from occurring. Where substantial alignment of the molecules within tissues, however, is a feature of structure the process of contraction can be exploited to guide new matrix deposition. In this paper, we will demonstrate how we have used the cell contraction process to generate tissues with high levels of organization. The tissues that have been grown in the laboratory have been characterized using a suite of analytical techniques to demonstrate significant levels of matrix organization and mechanical behaviour analogous to natural tissues. This paper provides an overview of research that has been undertaken to determine how tissues have been grown *in vitro* with structuring from the molecular, right through to the macroscopic level.

1. Introduction

Adhesion is important at all levels of biology and is critical to both structure and function. At the molecular level, it is the adhesion of enzymes to their substrates that facilitates many of the chemical reactions that are vital to life. Beyond this scale, the attachment of cells to an extracellular matrix (ECM) controls how cells behave and can respond to their environment [1,2]. Subsequent levels of organization, facilitated through adhesion between molecules within the ECM, are what enable connective tissues to perform under demanding mechanical loads placed on them by the body [3]. This paper summarizes the adhesions that are important at each length scale and describes how adhesion is being exploited to regenerate tissues and recapitulate the impressive levels of organization. The main focus of the review is on highly aligned tissues, ligament and tendon, but the methods reported could be used to generate more complex structure. The review is organized so that the adhesive forces important at the ECM level, cell-matrix level and tissue level are discussed in turn.

2. The extracellular matrix: molecular nature and structural adaptation

The ECM is a three-dimensional space within an organ or tissue that surrounds populations of cells and functions as an adhesive and supportive structure. The ECM is formed from water, proteins, proteoglycans and glycosaminoglycans (GAGs), each of which have important mechanical and biological roles. It is the proportions and orientations of each of these components that determine tissue function and physical performance and any damage to this structure

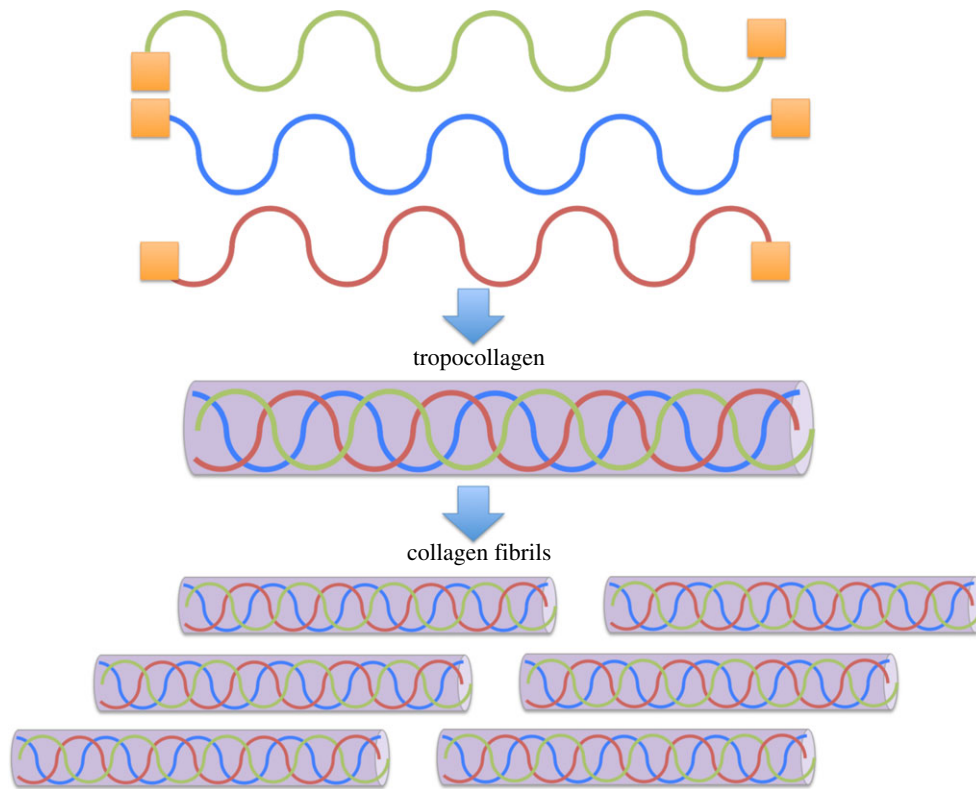


Figure 1. The assembly of collagen fibrils from tropocollagen molecules. Procollagen molecules are expressed within the cell and are modified via the cleavage of N and C termini. The resulting molecules self assemble to form tropocollagen molecules, which are subsequently self-assembled into collagen fibrils. Fibrillar diameter depends strongly on tissue type. (Online version in colour.)

can have important physical and biological consequences, potentially resulting in long-term disability. In addition to playing an important structural role, the organization of these ECM components strongly influences cell behaviour, offering cues that control cell differentiation, attachment, recruitment, migration and further ECM production [4]. The interplay between the embedded cells and the ECM itself means that tissues are able to constantly remodel in response to changes in loading and oxygen levels so that they are able to respond to the demands that are placed on the body. This impressive ability to adapt also makes the regeneration of tissues to their native states challenging. Soft connective tissues contain high proportions of structural fibrillar proteins such as collagen types I and II with modifications in structure that enable them to exhibit impressive mechanical properties. Cartilage, for example, obtains its shock-absorbing properties from high concentrations of hyaluronan and proteoglycan aggrecans and the rigidity of bone is a function of calcium phosphate present in the fibrillar collagen matrix. Below, the principle roles of collagen, GAGs and proteoglycans are introduced in more detail. It is noted that other molecules within the ECM (elastin, laminin and vitronectin) have important mechanical and biological functions, but these lay beyond the scope of this paper.

(a) Collagen

Collagen is the most abundant protein that is found in the human body [5]. There are, at present, 28 known collagen types, which can be classified into fibril forming (I, II and XI), fibril associated (IX, XII and XIV), transmembrane (XIII and XVII), network forming (VI, VII and X), anchoring base-membrane (IV) and a selection of others with highly

specific functions. In ligaments and tendons, type I is the most prevalent, constituting up to 90% of the total weight. Collagen type I is a structural protein with a triple helical conformation made up of two $\alpha 1$ chains and one $\alpha 2$ chain, that offers load-bearing tissue sufficient mechanical strength to withstand uniaxial and multiaxial loads [5]. The folding of the triple helix is due to glycine (Gly—the smallest amino acid) recurring in the Gly-X-Y amino acid sequence from which collagen is formed. X and Y are most commonly the amino acids proline and hydroxyproline, giving a repeating motif of Gly-Pro-Hyp [6]. It is the close packing of the three strands, hydrogen bonding and the high concentration of amino acids proline and hydroxyproline that stabilizes the triple helix [6]. The amino acids proline and 4-hydroxyproline are also referred to as imino acids [6,7] as they have one hydrogen atom attached to the nitrogen atom and when this forms part of an additional bond, there are no free hydrogen atoms available for hydrogen bonding. As a result, the presence of proline/hydroxyproline in the collagen molecule provides the flexibility needed to maintain the helical conformation for stability. When X and Y residues are not imino acids, they allow collagen fibril formation through attachment to other collagen molecules, integrins or ECM molecules [7,8]. Further stabilization of the collagen triple helix is achieved through binding of individual helices (tropocollagens) into collagen fibrils [9]. These fibrils can also join to form bundles and cross-link for enhanced stability [9] (figure 1).

(b) Glycosaminoglycans

Glycosaminoglycans (GAGs) are linear polysaccharide chains, which are usually highly sulfated and negatively charged [10]. Sulfated GAGs include chondroitin, dermatan

and keratan, whereas heparan, a basement membrane GAG and hyaluronan are unsulfated [11]. GAGs have extensive interaction with proteins such as growth factors, chemokines and cytokines [12] and the GAG long chains shield the proteins from proteolysis [13]. Connective tissues have high quantities of hyaluronan (hyaluronic acid), which aids cell migration and proliferation and maintains tissue hydration [14]. While the long chains are not very flexible, they are highly soluble in water and assume conformations that can trap large volumes of aqueous medium to form hydrated gels, a property that gives connective tissues their resistance to compressive stress [1].

(c) Proteoglycans

Proteoglycans are GAGs that are covalently bonded to a protein and, as with GAGs, proteoglycans are important for signal transduction and also provide additional structural support to tissues [15]. Aggrecan, versican, neurocan and brevican, collectively known as lecticans, are members of the chondroitin sulfate proteoglycan family that offer resilience to compressive force [16]. Other small proteoglycans whose proteins have leucine-rich repeat structures (SLRPs), form u-shaped structures suitable for protein–protein interactions [17]. Members of the SLRP family are decorin, biglycan, fibromodulin, lumican and keratocan. Decorin is present in connective tissue and, along with other SLRPs, contributes to collagen fibril assembly and its regulation [17]. A study by Matuszewski *et al.* [18] with the human supraspinatus tendon, located in the shoulder, showed that aggrecan and biglycan distribution varied throughout the tendon with the highest concentration being in the anterior and posterior regions that experience the highest compressive stress within this tissue and are prone to injury; decorin concentration was high throughout the tendon as expected in areas of high tensile strength. Proteoglycans that contain heparan sulfate can bind with growth factors and other signalling molecules that can accelerate cell proliferation and modulate behaviour [1].

The distribution of matrix components through tissues is critical to mechanical performance. In the case of ligaments, the ligament midsubstance consists of collagen type I fibrils, which are aligned parallel to the principle axis of loading (figure 2). Moving towards the extremities of a ligament, there is a disruption in this order such that the collagenous matrix becomes richer in proteoglycan and GAG molecules with the formation of a homogeneous fibrocartilage structure. Directly adjacent to the bone, there is a region of mineralized fibrocartilage that directly abuts the subchondral bone. This exquisite level of structural adaptation means that the sinew is loaded almost purely in tension at its central portion and the mineralized region is placed under compression. This places each of the tissue components in a loading environment in which they may perform optimally and minimizes the chances of failure during locomotion [3]. It is this level of ordering which also provides a significant challenge within the field of regenerative medicine. It is, at present, impossible to reproduce these properties in a synthetic material; there is therefore a move towards using cells to create such structures outside the body for subsequent implantation. In order to understand how this may be done, it is important to understand how cells may interact with and be influenced by matrix components and other cells.

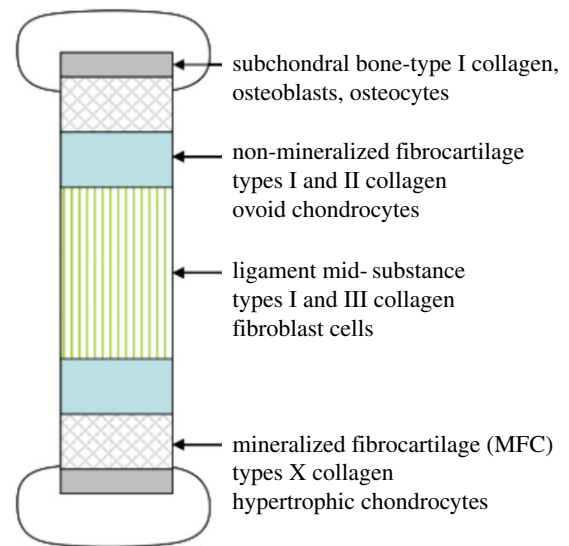


Figure 2. The heterogeneous structure of ligament tissue which prevents failure at the interface between bone and sinew. (Online version in colour.)

3. Cell–matrix interactions

Cells that are found within the ECM are critical to long-term adaptation and can therefore have an important role in the process of regeneration, particularly, in tissue deposition and restructuring. As the majority of human cells are anchorage dependent, their ability to form an adhesion with the ECM is critical to cell survival and behaviour [19]. The cell membrane consists of a phospholipid bilayer engulfed by a polysaccharide layer called the glycocalyx, which is ionizable resulting in a net negative charge on the cell surface [1]. The polymeric materials used for culturing cells *in vitro* are typically coated with poly-L-lysine, which has positively charged amine groups [1,20]. As a consequence, non-specific adhesion of various types of cells to solid surfaces occurs through weakly attractive electrostatic van der Waals forces [1]. The attachment of cells to the ECM is more specific and occurs through the interaction of moieties on ECM molecules with cell-surface glycoproteins known as integrins (figure 3). Integrin molecules contain 1–18 α and 1–8 β subunits arranged in different combinations. Many integrins bind to the same ligands on ECM components that contain the amino acid sequence Arg-Gly-Asp commonly known as RGD [1,21]. Typical ECM components that have the RGD sequence are vitronectin, fibronectin and tenascin, though on collagen and laminin these are more obscure [22].

Fibroblasts express integrins with subunit arrangement $\alpha_1\beta_1$ and $\alpha_2\beta_1$ that bind to collagen simultaneously, however $\alpha_2\beta_1$ has been found to have a greater affinity for collagen type I [23]. In three-dimensional collagen matrices, cells deficient in $\alpha_1\beta_1$ receptors showed decreased growth, whereas presence of $\alpha_2\beta_1$ enhanced the expression of collagen-degrading enzymes MMP-1 and MMP-13 [23,24], which mediates matrix renewal. The two integrins appear to have different roles because during wound healing $\alpha_2\beta_1$ expression is upregulated by fibroblasts while that of $\alpha_1\beta_1$ is downregulated [23]. Endothelial cells proliferate during wound healing and they possess $\alpha_v\beta_3$ as their most prominent integrin [24]. In addition, dermal endothelial cells cultured in fibronectin or fibrin gels expressed higher mRNA levels of $\alpha_v\beta_3$ than when cultured in collagen gels. As a result, $\alpha_v\beta_3$ is an integrin implicated in cell–fibrin

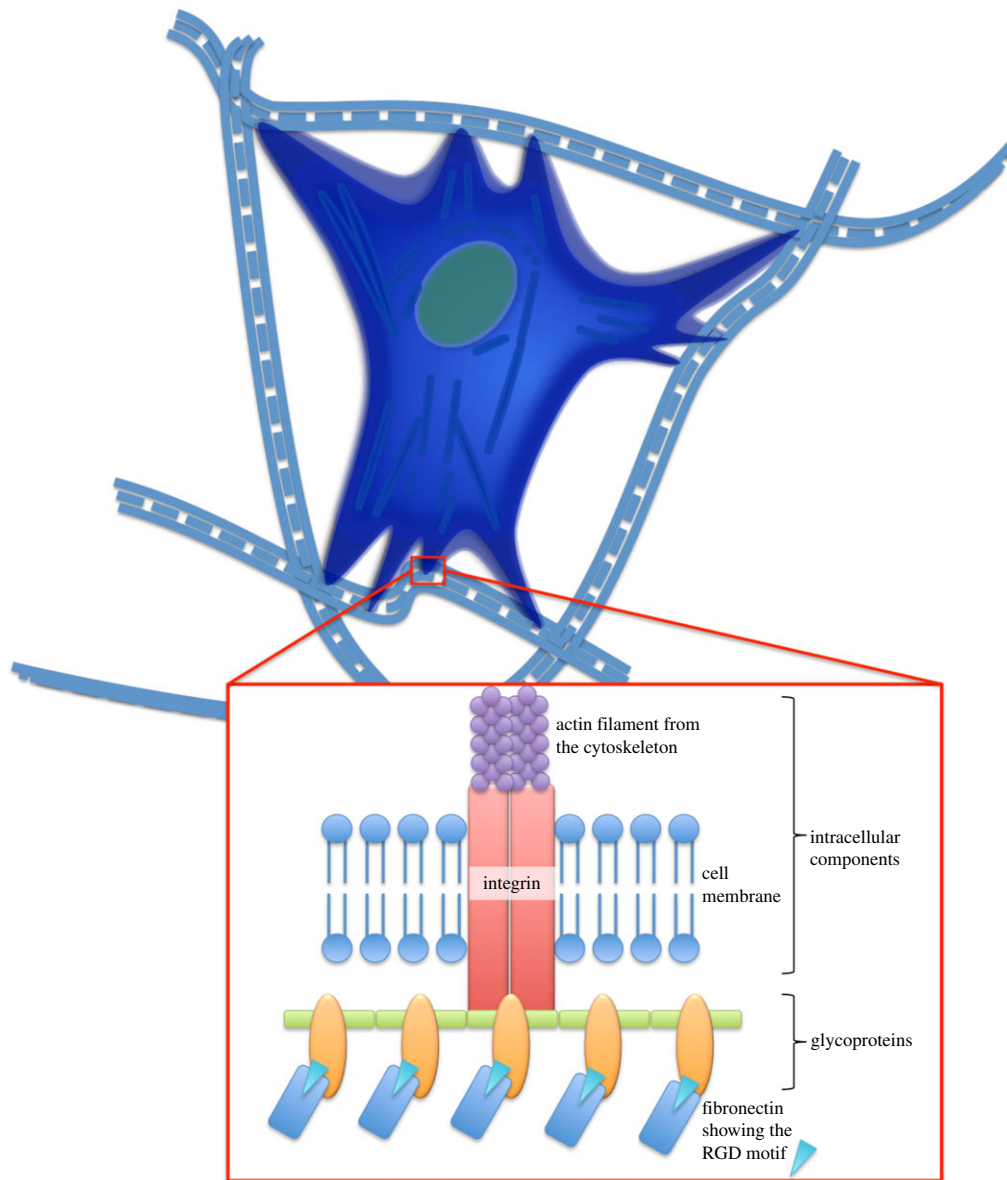


Figure 3. The interactions that occur between a cell adhesive fibrillar matrix bearing the RGD motif and an adhesion-dependent mammalian cell. The integrin subunits mediate attachment of the matrix to the actin cytoskeleton and enable stress transfer that can initiate tissue remodelling. (Online version in colour.)

adhesion. Cell–cell adhesion can also be mediated by fibrinogen through binding of $\alpha_{\text{IIb}}\beta_3$ and $\alpha_X\beta_1$ on fibrinogen motifs Lys-Gln-Ala-Gly-Asp-Val (KQAGDV) and Gly-Pro-Arg-Pro (GPRP), respectively [25].

The clustering of integrins between a cell membrane and ECM molecules results in the formation of a focal adhesion complex, which anchors a network of actin stress fibres within the cell. This link between the cell and the ECM is what enables the cells to experience the mechanical loading applied to the cell population and critically activates pathways that enable the digestion of matrix and the concomitant deposition of new ECM. An improved understanding of the processes that occur during cell adhesion and how such processes govern tissue formation has opened the possibility of creating tissues *in vitro*. This may be achieved by placing the cell population in an environment that can stimulate the attached cells to secrete new ECM. Given the reported differences in cell behaviour when cultured in a three-dimensional structure as compared with in a monolayer system, much work has recently been dedicated to understanding the fundamental differences in behaviour between cell populations that are cultured in two and three dimensions. There is now a general consensus that

reproducing the complex tissue architectures that are found *in vivo* requires the provision of a three-dimensional support that provides cues to stimulate the embedded cell population to develop new matrix. The remainder of the paper will detail how three-dimensional culture in biologically derived matrices may enable the formation of organized tissue structures.

4. Tissue production *in vitro* exploiting cell–matrix interactions

One way to encourage cells to secrete their own matrix and digest that to which they are attached is through the use of a temporary matrix to support the cells during growth. A matrix that has been shown to enable this is fibrin which facilitates cell attachment through an integrin matrix and may be readily reorganized by seeded cells. It is readily available through the collection of a small blood sample and fulfils an important haemostatic role during the process of wound healing in the body, providing a matrix onto which cells can attach and eventually be replaced by native tissue. It is formed from the cleavage of fibrinogen by thrombin, which

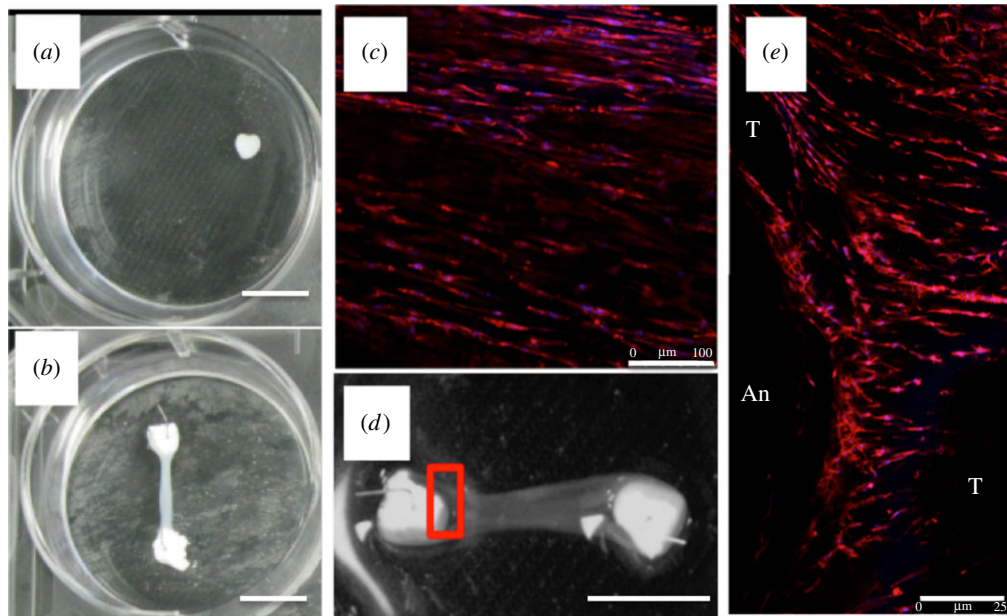


Figure 4. Free floating (a) and attached (b) fibrin-gel cultures seeded with fibroblasts after three weeks in culture (scale bars, 10 mm). (c) By 15 days of culture, cells in the central portion (stained with DAPI and phalloidin) were elongated and were orientated along the long axis of the sinew structure (scale bar, 100 μm). (d,e) Close examination of the interface with the ceramic brackets showed that levels of orientation varied from the ligament midsubstance (labelled T) to the interface with the anchor (labelled An). Scale bar, 8 mm in (d), 250 μm in (e). (Online version in colour.)

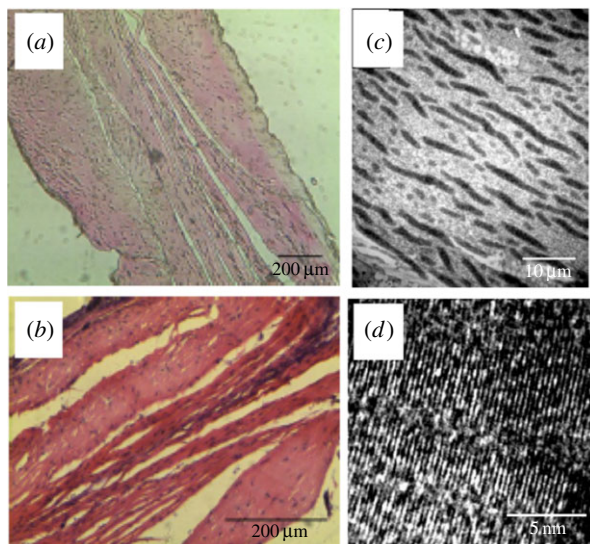


Figure 5. Imaging of ECM in the engineered tissues. Haematoxylin and eosin staining demonstrated the extent of cell and matrix alignment within the structure (a,b) and the enhanced density of the sinews following treatment with anabolic agents (b). Transmission electron microscopy demonstrated the presence of aligned fibrillar structures along the long axis of the sinew on the micro- (c) and nano-scales (d). (Online version in colour.)

results in the formation of fibrinopeptides A and B. It is the affinity of what are known as knobs A and B, which fit into holes a and b and result in gelation through the formation of protofibrils, which eventually self assemble to form a fibrillar network [26–28]. Fibroblasts seeded into a fibrin gel on the surface of a culture dish then associate with the fibrillar structure and will begin to contract the matrix and eventually a sphere of gelatinous material will be formed within the culture dish (figure 4a). By retaining the fibrin gel in the dish by using pins and sutures [29,30] or a calcium-phosphate ceramic with an inherently tissue-adhesive nature (figure 4b) [31,32], a gel cylinder is formed between the points of

retention. The retention of the sinew-like structure by the ceramic brackets results in a passive tension between the ceramics [33] and this forces cell and molecular alignment [34] within the newly formed matrix (figure 4c–f). The cells have elongated cell bodies and nuclei suggestive of a tenocytic phenotype [35]. Interestingly, the level of orientation is significantly lower at the interface with the calcium phosphate ceramic suggestive of the development of a structure with multiple levels of organization (figure 4e).

After short periods of culture, the sinews typically consist of very small quantities of collagen (less than 5 wt%) [29,30]. However, it has been shown that it is possible to accelerate type I collagen deposition within the sinew by chemical treatment with ascorbic acid and proline [31], the former of which is involved in processing the procollagen molecules and the latter is added to prevent substrate limitation of collagen I production. Others have also demonstrated that it is possible to enhance collagen production through the application of a cocktail of growth factors [36]. It has also been demonstrated that intermittent bouts of cyclic mechanical conditioning of the sinew model results in an enhancement of collagen deposition and the mechanical strength of the resulting structures, although care must be taken to prevent matrix damage that can occur as a consequence of the application of more than 5% strain [37]. Recent unpublished results from our group have shown that it is possible to generate sinews with as high as 50 wt% of collagen I by also optimizing the mechanical properties of the supporting fibrin gel. Our hypothesis for this phenomenon is that an increase in local modulus enhances the mechanical stimulus provided to the cell population and upregulates collagen through the ERK pathway. Histological analysis demonstrated that the sinew itself had a highly orientated ECM (figure 5a) with the use of the collagen promoters ascorbic acid (AA) and proline (P) causing an enhancement in the density of the matrix (figure 5b). Examination of the ultrastructure using transmission electron microscopy (TEM) demonstrated the alignment of fibrils at the micro (figure 5c) and nano scales (figure 5d).

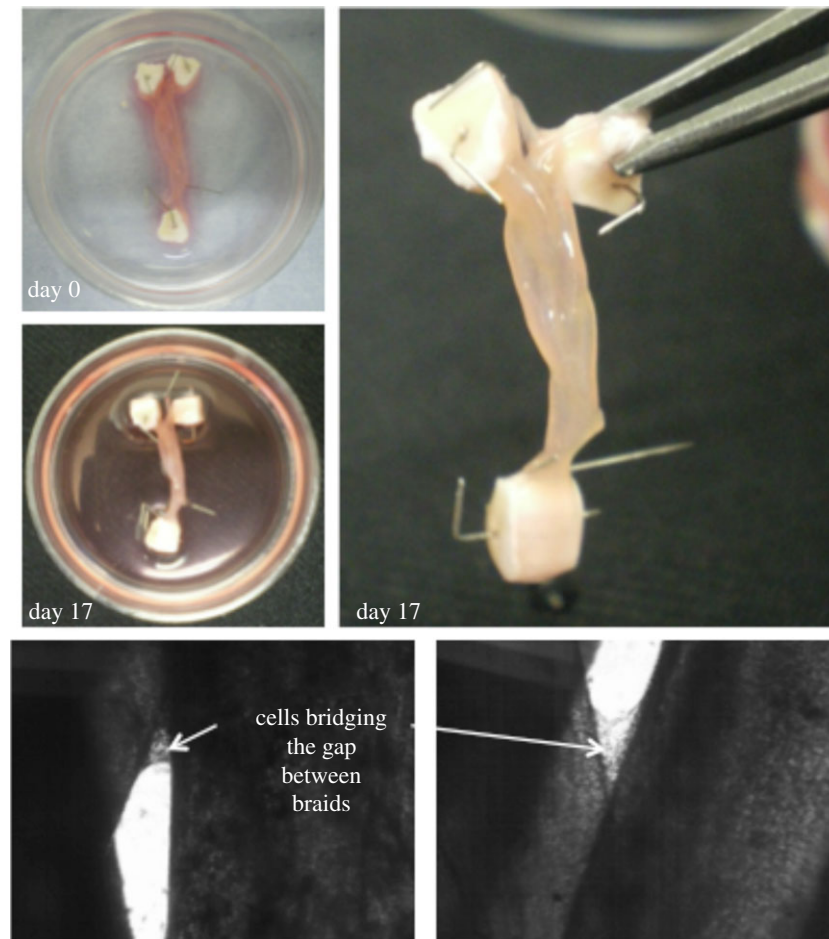


Figure 6. Macrostructural organization of the engineered sinews demonstrating the amalgamation of the individual strands over a period of 17 days in culture. (Online version in colour.)

5. Structuring tissue on the macroscopic scale

Ligaments and tendons are formed from multiple fascicles that interact with one another. The interactions that form between individual fascicles have been proposed to be responsible for enhancing the mechanical properties exhibited by native ligaments and tendon. The fascicles themselves are bundled together and surrounded by a membranous structure known as the epitenon [38]. In order to replicate this arrangement, it is possible to culture individual sinews in close proximity over a period of weeks. In the course of this time, the individual strands grow together and eventually amalgamate. The amalgamation is as a consequence of cellular bridging between the structures in addition to the formation of ECM between the individual strands (figure 6). Importantly, this kind of macrostructural organization of the sinew-like structures results in mechanical augmentation of the structure and deformation behaviour similar to that observed for native sinews.

6. Conclusion and future directions

By controlling how cells are able to manipulate a soft matrix *in vitro* it is possible to generate a heterogeneously structured material with structure and deformation characteristics that resemble those of native ligaments and tendons. The mechanical properties that are exhibited by these structures are orders of magnitude lower than those exhibited by native ligaments and tendons and so it is unlikely that they will replace current methods for ligament and tendon reconstruction in the very near future. Current directions of research are seeking to use this structured material as a means to augment healing in the body. We have recently published a method for decellularizing these structures [39] so that they may be manufactured and stored prior to implantation into patients to enhance the success of currently existing methods of tissue reconstruction. The aligned collagenous matrix is also being used as a model for diseases where mineral deposition within the soft tissues is a debilitating side effect.

References

1. Saltzman WM. 2004 *Tissue engineering: engineering principles for the design of replacement organs and tissues*, vol. 4. New York, NY: Oxford University Press.
2. Discher DE, Janmey P, Wang YL. 2005 Tissue cells feel and respond to the stiffness of their substrate. *Science* **310**, 1139–1143. (doi:10.1126/science.1116995)
3. Moffat KL, Sun WA, Pena PE, Chahine NO, Doty SB, Ateshian GA, Hung CT, Lu HH. 2008 Characterisation of the structure-function relationship in the ligament to bone interface. *Proc. Natl Acad. Sci. USA* **105**, 7947–7952. (doi:10.1073/pnas.0712150105)
4. Watt FM, Huck WT. 2013 Role of the extracellular matrix in regulating stem cell fate. *Nat. Rev. Mol. Cell Biol.* **14**, 467–473. (doi:10.1038/nrm3620)
5. Gelse K, Poschi E, Aigner T. 2003 Collagens—structure, function, and biosynthesis. *Adv. Drug*

- Deliv. Rev.* **55**, 1531–1546. (doi:10.1016/j.addr.2003.08.002)
6. Ramshaw JA, Shah NK, Brodsky B. 1998 Gly-X-Y tripeptide frequencies in collagen: a context for host-guest triple-helical peptides. *J. Struct. Biol.* **122**, 86–91. (doi:10.1006/jsbi.1998.3977)
 7. Wu G *et al.* 2011 Proline and hydroxyproline metabolism: implications for animal and human nutrition. *Amino Acids* **40**, 1053–1063. (doi:10.1007/s00726-010-0715-z)
 8. Brodsky B, Ramshaw JA. 1997 The collagen triple-helix structure. *Matrix Biol.* **15**, 545–554. (doi:10.1016/S0945-053X(97)90030-5)
 9. Bhattacharee A, Bansal M. 2005 Collagen structure: the Madras triple helix and the current scenario. *IUBMB Life* **57**, 161–172. (doi:10.1080/15216540500090710)
 10. Rudd T, Skidmore M, Guerrini M, Hricovini M, Powell A, Siligard G, Yates E. 2010 The conformation and structure of GAGs: recent progress and perspectives. *Curr. Opin. Struct. Biol.* **20**, 567–574. (doi:10.1016/j.sbi.2010.08.004)
 11. Gandhi NS, Mancera RL. 2008 The structure of glycosaminoglycans and their interactions with proteins. *Chem. Biol. Drug Des.* **72**, 455–482. (doi:10.1111/j.1747-0285.2008.00741.x)
 12. Taylor KR, Gallo RL. 2006 Glycosaminoglycans and their proteoglycans: host associated molecular patterns for initiation and modulation of inflammation. *FASEB J.* **20**, 9–22. (doi:10.1096/fj.05-4682rev)
 13. Antonio JDS, Iozzo RV. 2001 *Glycosaminoglycans: structure and biological functions*. London, UK: John Wiley and Sons.
 14. Kogan G, Soltes L, Stern R, Gemeiner P. 2007 Hyaluronic acid: a natural biopolymer with a broad range of biomedical and industrial applications. *Biotechnol. Lett.* **29**, 17–25. (doi:10.1007/s10529-006-9219-z)
 15. Lindhardt RJ, Toida T. 2004 Role of glycosaminoglycans in cellular communication. *Acc. Chem. Res.* **37**, 431–438. (doi:10.1021/ar030138x)
 16. Yamaguchi Y. 2000 Lecticans: organizers of the brain extracellular matrix. *Cell. Mol. Life Sci.* **57**, 276–289. (doi:10.1007/PL00000690)
 17. Kresse H, Shonherr E. 2001 Proteoglycans of the extracellular matrix and growth control. *J. Cell. Physiol.* **189**, 266–274. (doi:10.1002/jcp.10030)
 18. Matuszewski PE, Chen Y-L, Szczesny SE, Lake SP, Elliott DM, Soslowsky LJ, Dodge GR. 2012 Regional variation in human supraspinatus tendon proteoglycans: decorin, biglycan and aggrecan. *Connect. Tissue Res.* **53**, 343–348. (doi:10.3109/03008207.2012.654866)
 19. Frame KK, Hu W-S. 1988 A model for density-dependent growth of anchorage dependent mammalian cells. *Biotechnol. Bioeng.* **32**, 1061–1066. (doi:10.1002/bit.260320813)
 20. Mazia D, Schatten G, Sale W. 1975 Adhesion of cells to surfaces coated with polylysine: applications to electron microscopy. *J. Cell Biol.* **66**, 198–200. (doi:10.1083/jcb.66.1.198)
 21. Dalby MJ, Gadegaard N, Oreffo ROC. 2014 Harnessing nanotopography and integrin-matrix interactions to influence stem cell fate. *Nat. Mater.* **13**, 558–569. (doi:10.1038/nmat3980)
 22. van der Flier A, Sonnenberg A. 2001 Function and interactions of integrins. *Cell Tissue Res.* **305**, 285–298. (doi:10.1007/s004410100417)
 23. Heino J. 2000 The collagen receptor integrins have distinct ligand recognition and signalling functions. *Matrix Biol.* **19**, 319–323. (doi:10.1016/S0945-053X(00)00076-7)
 24. White DJ, Puranen S, Johnson MS, Heino J. 2004 The collagen receptor subfamily of the integrins. *Int. J. Biochem. Cell Biol.* **36**, 1405–1410. (doi:10.1016/j.biocel.2003.08.016)
 25. Hynes RO. 1992 Integrins: versatility, modulation and signalling in cell adhesion. *Cell* **69**, 11–25. (doi:10.1016/0092-8674(92)90115-5)
 26. Mosesson MW. 2005 Fibrinogen and fibrin structure and functions. *J. Thromb. Haemost.* **3**, 1894–1904. (doi:10.1111/j.1538-7836.2005.01365.x)
 27. Ferry JD, Miller M, Shulman S. 1951 The conversion of fibrinogen to fibrin. VII. Rigidity and stress relaxation of fibrin clots; effect of calcium. *Arch. Biochem.* **34**, 424–436. (doi:10.1016/0003-9861(51)90021-5)
 28. Janmey PA, Winer JP, Weisel JW. 2009 Fibrin gels and their clinical and bioengineering applications. *J. R. Soc. Interface* **6**, 1–10. (doi:10.1098/rsif.2008.0327)
 29. Calve S, Dennis RG, Kosnik PE, Baar K, Grish K, Arruda EM. 2004 Engineering of functional tendon. *Tissue Eng.* **10**, 755–761. (doi:10.1089/1076327041348464)
 30. Paxton JZ, Donnelly K, Keatch RP, Baar K. 2008 Engineering the bone-ligament interface using poly(ethylene) glycol diacrylate incorporated with hydroxyapatite. *Tissue Eng. A* **15**, 1201–1209. (doi:10.1089/ten.tea.2008.0105)
 31. Paxton JZ, Grover LM, Baar K. 2010 Engineering and *in vitro* model of a functional ligament from bone to bone. *Tissue Eng. A* **16**, 3515–3525. (doi:10.1089/ten.tea.2010.0039)
 32. Paxton JZ, Donnelly K, Keatch RP, Baar K, Grover LM. 2010 Factors affecting the longevity and strength in an *in vitro* model of the bone-ligament interface. *Ann. Biomed. Eng.* **38**, 2155–2166. (doi:10.1007/s10439-010-0044-0)
 33. Paxton JZ, Wudebwe UNG, Wang A, Woods D, Grover LM. 2012 Monitoring sinew contraction during formation of tissue engineered fibrin-based ligament constructs. *Tissue Eng. A* **18**, 1596–1607. (doi:10.1089/ten.tea.2011.0535)
 34. Bayer M *et al.* 2010 The initiation of embryonic-like collagen fibrillogenesis by adult human tendon fibroblasts when cultured under tension. *Biomaterials* **31**, 4889–4897. (doi:10.1016/j.biomaterials.2010.02.062)
 35. Kapacee Z, Richardson SH, Lu Y, Holmes DF, Baar K, Kadler KE. 2008 Tension is required for fibripositor formation. *Matrix Biol.* **27**, 371–375. (doi:10.1016/j.matbio.2007.11.006)
 36. Hagerty J, Lee A, Calve S, Lee CA, Vidal M, Baar K. 2012 The effect of growth factors on both collagen synthesis and tensile strength of engineered human ligaments. *Biomaterials* **33**, 6355–6361. (doi:10.1016/j.biomaterials.2012.05.045)
 37. Paxton JZ, Hagerty P, Andrick JJ, Baar K. 2012 Optimizing an intermittent stretch paradigm using ERK1/2 phosphorylation results in increased collagen synthesis in engineered ligaments. *Tissue Eng. A* **18**, 277–284. (doi:10.1089/ten.tea.2011.0336)
 38. Kannus P. 2000 Structure of the tendon connective tissue. *Scand. J. Med. Sci. Sports* **10**, 312–320. (doi:10.1034/j.1600-0838.2000.010006312.x)
 39. Lebled C, Grover LM, Paxton JZ. 2014 Combined decellularisation and dehydration improves the mechanical properties of tissue-engineered sinews. *J. Tissue Eng.* **5**, 2041731414536720. (doi:10.1177/2041731414536720)