

Clinical risk factors and subclinical target organ damage as predictors of new-onset of atrial fibrillation

Perticone, Francesco; Sciacqua, Angela; Perticone, Maria; Tassone, Eliezer J.; Sesti, Giorgio; Violi, Francesco; Lip, Gregory Y.h.

DOI:

[10.1016/j.ijcard.2014.09.169](https://doi.org/10.1016/j.ijcard.2014.09.169)

License:

Other (please specify with Rights Statement)

Document Version

Peer reviewed version

Citation for published version (Harvard):

Perticone, F, Sciacqua, A, Perticone, M, Tassone, EJ, Sesti, G, Violi, F & Lip, GYH 2014, 'Clinical risk factors and subclinical target organ damage as predictors of new-onset of atrial fibrillation: the Catanzaro atrial fibrillation project', *International Journal of Cardiology*, vol. 177, no. 2, pp. 666-668.
<https://doi.org/10.1016/j.ijcard.2014.09.169>

[Link to publication on Research at Birmingham portal](#)

Publisher Rights Statement:

NOTICE: this is the author's version of a work that was accepted for publication. Changes resulting from the publishing process, such as peer review, editing, corrections, structural formatting, and other quality control mechanisms may not be reflected in this document. Changes may have been made to this work since it was submitted for publication. A definitive version was subsequently published as Perticone Francesco, Sciacqua Angela, Perticone Maria, Tassone Eliezer J., Sesti Giorgio, Violi Francesco, Lip Gregory Y.H., Clinical Risk Factors and Subclinical Target Organ Damage as Predictors of New-onset of Atrial Fibrillation: The Catanzaro Atrial Fibrillation Project, *International Journal of Cardiology* (2014), doi: 10.1016/j.ijcard.2014.09.169

General rights

Unless a licence is specified above, all rights (including copyright and moral rights) in this document are retained by the authors and/or the copyright holders. The express permission of the copyright holder must be obtained for any use of this material other than for purposes permitted by law.

- Users may freely distribute the URL that is used to identify this publication.
- Users may download and/or print one copy of the publication from the University of Birmingham research portal for the purpose of private study or non-commercial research.
- User may use extracts from the document in line with the concept of 'fair dealing' under the Copyright, Designs and Patents Act 1988 (?)
- Users may not further distribute the material nor use it for the purposes of commercial gain.

Where a licence is displayed above, please note the terms and conditions of the licence govern your use of this document.

When citing, please reference the published version.

Take down policy

While the University of Birmingham exercises care and attention in making items available there are rare occasions when an item has been uploaded in error or has been deemed to be commercially or otherwise sensitive.

If you believe that this is the case for this document, please contact UBIRA@lists.bham.ac.uk providing details and we will remove access to the work immediately and investigate.

Accepted Manuscript

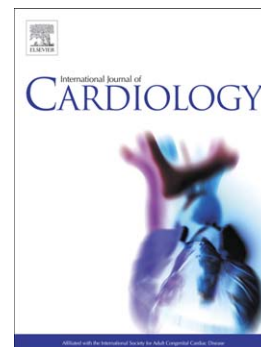
Clinical Risk Factors and Subclinical Target Organ Damage as Predictors of New-onset of Atrial Fibrillation: The Catanzaro Atrial Fibrillation Project

Francesco Perticone, Angela Sciacqua, Maria Perticone, Eliezer J. Tassone, Giorgio Sesti, Francesco Violi, Gregory Y.H. Lip

PII: S0167-5273(14)01889-0
DOI: doi: [10.1016/j.ijcard.2014.09.169](https://doi.org/10.1016/j.ijcard.2014.09.169)
Reference: IJCA 18945

To appear in: *International Journal of Cardiology*

Received date: 17 September 2014
Accepted date: 27 September 2014



Please cite this article as: Perticone Francesco, Sciacqua Angela, Perticone Maria, Tassone Eliezer J., Sesti Giorgio, Violi Francesco, Lip Gregory Y.H., Clinical Risk Factors and Subclinical Target Organ Damage as Predictors of New-onset of Atrial Fibrillation: The Catanzaro Atrial Fibrillation Project, *International Journal of Cardiology* (2014), doi: [10.1016/j.ijcard.2014.09.169](https://doi.org/10.1016/j.ijcard.2014.09.169)

This is a PDF file of an unedited manuscript that has been accepted for publication. As a service to our customers we are providing this early version of the manuscript. The manuscript will undergo copyediting, typesetting, and review of the resulting proof before it is published in its final form. Please note that during the production process errors may be discovered which could affect the content, and all legal disclaimers that apply to the journal pertain.

**Clinical Risk Factors and Subclinical Target Organ Damage as Predictors of
New-onset of Atrial Fibrillation: the Catanzaro Atrial Fibrillation Project**

*Francesco Perticone¹, MD, *Angela Sciacqua¹, MD, *Maria Perticone¹, MD,
*Eliezer J Tassone¹, MD, *Giorgio Sesti¹, MD, *Francesco Violi², MD, *Gregory YH Lip³, MD.

*All authors take responsibility for all aspects of the reliability and freedom from bias of the data presented and their discussed interpretation.

¹ Chair of Internal Medicine and Cardiovascular Disease Unit, Department of Medical and Surgical Sciences, University *Magna Græcia* of Catanzaro, Italy

² I Clinica Medica, Sapienza University, Roma, Italy.

⁴ University of Birmingham, Centre for Cardiovascular Sciences, City Hospital, Birmingham, United Kingdom.

Address correspondence to:

Francesco Perticone, MD

Department of Medical and Surgical Sciences

Campus Universitario di Germaneto, V.le Europa

88100 - Catanzaro (Italy)

Phone: +39.0961.3647149 Fax: + 39 0961.3647634 e-mail: perticone@unicz.it

Atrial fibrillation (AF) is the most common cardiac rhythm disorder in adult and old subjects with an increased risk for stroke, mortality and hospitalizations with a significant impact on the health care economic costs [1]. Several clinical conditions are recognized as risk factors for AF [2] and they are able to significantly increase the risk of future cardiovascular (CV) events [3].

In clinical practice the subclinical target organ damages (TOD) is considered a strong and independent predictor of CV events, in particular the measurements of carotid intima-media thickness (IMT), left ventricular hypertrophy (LVH) and chronic kidney disease [4-6]. There are no data demonstrating that incident AF may occur in the general context of CV disease burden. Thus, in the present study we investigated in a large cohort of subjects, with different CV risk factors and TOD, the possible association between these factors and new onset AF, testing the hypothesis that CV risk factors and TOD predict new onset AF.

We performed a population-based prospective study aimed to assess the association between new AF and CV risk profile estimated by using the 10-year Framingham risk score (FRS) categories (low=0-10, intermediate=11-20, high= \geq 20) and/or subclinical TOD presence. We enrolled 3549 Caucasian outpatients, 1829 men and 1720 women, aged 60.7 ± 10.6 years without baseline AF. The local Ethics Committee approved the protocol and informed written consent was obtained from all participants. All the investigations were performed according with the principles of Declaration of Helsinki. TOD was defined as IMT value >0.9 mm by carotid ultrasonography, left ventricular mass >110 g/m² for women and >134 g/m² for men by echocardiographic measurements according to American Society of Echocardiography [7], and estimated-glomerular filtration rate (e-GFR) <60 ml/min/1.73m² by CKD-EPI equation [8].

During the follow-up (mean 53.3 ± 18.1 months, range 20 –150), there were 546 new cases of AF (15.4%), accounting for an incidence of 4.5% per year. Progressors to new onset AF were older, had a higher body mass index, blood pressure, LDL-cholesterol, glucose, cardiac mass, and a lower e-GFR; also, hypertension, metabolic syndrome, diabetes, LVH and carotid wall thickening were more common among AF cases than controls. The 10-year mean FRS was higher in progressors

than non-progressors to AF. Moreover the prevalence of new onset AF increases from low to high FRS categories as well as with the increase of the number of subclinical TOD. A multiple Cox regression analysis demonstrated that independent variables associated with AF risk were body mass index (HR=1.02, 95%CI=1.00-1.03), intermediate FRS category (HR=1.64, 95%CI=1.26-2.14), carotid thickening (HR=2.00, 95%CI=1.69-2.37), high FRS category (HR=2.07, 95%CI=1.61-2.66), LVH (HR=2.29, 95%CI=1.88-2.78) and renal dysfunction (HR=2.48, 95%CI=2.06-2.99). In figure 1 the adjusted Kaplan-Meier curves for incident AF across categories of single or multiple subclinical TOD is reported.

The analysis of ROC curves shows that the composite score including LVH, IMT and renal function produces a ROC curve area (AUC) of 0.74 ± 0.01 for identifying patients who develop AF. This value is significantly higher ($P<0.001$) than AUC produced by the FRS ($AUC:0.63\pm 0.01$), demonstrating that the clinical and biological plausibility of TOD is stronger than that of CV risk factors. Thus, the composite TOD score has the highest predictive value for discriminating patients with from those without new-onset AF. The interaction analysis among all three markers of subclinical TOD (renal, cardiac and vascular) in predicting the study outcome showed that these factors strongly interact in explaining the incidence rate of AF in the study population. A synergistic effect (that is an observed HR for AF higher than that expected in the absence of interaction under the additive model) was found for each combination of subclinical TOD, and was particularly strong when all three factors were simultaneously present in the same patient (Figure 2). The excess risk for AF caused by the interaction of all three markers of subclinical TOD (synergy index) was 4.5 times higher than that attributed to renal dysfunction, LVH and carotid wall thickening in the absence of interaction ($P<0.001$, AUC 0.74 ± 0.01).

Present data clearly demonstrate that traditional CV risk factors, alone or in a cluster, which was even more evident for TOD, are significantly associated with new onset AF. The major clinical relevance is the evidence that AF may be considered a CV clinical manifestation in the context of CV risk profile. Moreover, this study has implications for screening for AF, especially among high

risk groups, and the need to consider early interventions to reduce the complications associated with AF.

The large sample size of the study population, the long duration of follow-up, and the results' persistent consistency in multiple analyses, adjusting for several confounders, confer an important validity to these data. Furthermore, the concordance with results obtained in the Rotterdam study [9], demonstrating a significant association between IMT and new-onset of AF in subjects without history of coronary artery disease, supports the biological plausibility of our data. In particular, TOD may well reflect the prolonged exposure to traditional CV risk factors perhaps suggesting that AF represents an intermediate step in the causal pathway of CV continuum, from CV risk factors to clinical events. In fact, atherosclerosis is very common in subjects with AF, and may be responsible for various clinical complications associated with AF, especially stroke and thromboembolism.

From a clinical point of view, present data have some important implications. TOD represents an established marker of prolonged exposure to many CV risk factors. It is likely that also the atrium might be damaged by the same CV risk factors, favouring the development of substrate obligatory for the appearance of AF. Based on this, the clinical spectrum of patients with AF is similar to that of patients with CV risk factors and at high risk of both AMI and stroke [10]. Thus, an aggressive and global treatment of subjects, with multiple subclinical disease, may contribute to lower the incidence of AF, consequently decreasing both the disease burden and costs of caring.

References

- [1] B.P. Krijthe, A. Kunst, E.J. Benjamin, G.Y. Lip, O.H. Franco, A. Hofman, J.C. Witteman, B.H. Stricker, J. Heeringa. Projections on the number of individuals with atrial fibrillation in the European Union, from 2000 to 2060, *Eur Heart J* 34 (2013) 2746-2751.
- [2] E.J. Benjamin, D. Levy, S.M. Vaziri, R.B. D'Agostino, A.J. Belanger, P.A. Wolf. Independent risk factors for atrial fibrillation in a population-based cohort. The Framingham Heart Study, *JAMA* 271 (1994) 840-844.
- [3] F. Violi, G. Davi, W. Hiatt, G.Y. Lip, G.R. Corazza, F. Perticone, M. Proietti, P. Pignatelli, A.R. Vestri, S. Basili; ARAPACIS Study Investigators. Prevalence of peripheral artery disease by abnormal ankle-brachial index in atrial fibrillation: implications for risk and therapy, *J Am Coll Cardiol* 62 (2013) 2255-6. doi: 10.1016/j.jacc.2013.07.035.
- [4] D.H. O'Leary, J.F. Polak, R.A. Kronma, T.A. Manolio, G.L. Burke, S.K. Wolfson Jr. Carotid-artery intima and media thickness as a risk factor for myocardial infarction and stroke in older adults. Cardiovascular Health Study Collaborative Research Group, *N Engl J Med* 340 (1999) 14-22.
- [5] D. Levy, R.J. Garrison, D.D. Savage, W.B. Kannel, W.P. Castelli. Prognostic implications of echocardiographically determined left ventricular mass in the Framingham Heart Study, *N Engl J Med* 322 (1990) 1561-1566.
- [6] A.S. Go, G.M. Chertow, D. Fan, C.E. McCulloch, C.Y. Hsu. Chronic kidney disease and the risk of death, cardiovascular events, and hospitalisation, *N Engl J Med* 351 (2004) 1296-305.
- [7] M.D. Cheitlin, W.F. Armstrong, G.P. Aurigemma, G.A. Beller, F.Z. Bierman, J.L. Davis, P.S. Douglas, D.P. Faxon, L.D. Gillam, T.R. Kimball, W.G. Kussmaul, A.S. Pearlman, J.T. Philbrick, H. Rakowski, D.M. Thys, E.M. Antman, S.C. Smith Jr, J.S. Alpert, G. Gregoratos, J.L. Anderson, L.F. Hiratzka, S.A. Hunt, V. Fuster, A.K. Jacobs, R.J. Gibbons, R.O. Russell; American College of Cardiology; American Heart Association; American Society of

Echocardiography. ACC/AHA/ASE 2003 guideline update for the clinical application of echocardiography: summary article: a report of the American College of Cardiology/American Heart Association Task Force on Practice Guidelines (ACC/AHA/ASE Committee to Update the 1997 Guidelines for the Clinical Application of Echocardiography), *Circulation* 108 (2003) 1146-1162.

- [8] A.S. Levey, L.A. Stevens, C.H. Schmid, Y.L. Zhang, A.F. Castro 3rd, H.I. Feldman, J.W. Kusek, P. Eggers, F. Van Lente, T. Greene, J. Coresh; CKD-EPI (Chronic Kidney Disease Epidemiology Collaboration). A new equation to estimate glomerular filtration rate, *Ann Intern Med* 150 (2009) 604–612.
- [9] J. Heeringa, D.A.M. van der Kuip, A. Hofman, J.A. Kors, F.J. van Rooij, G.Y. Lip, J.C. Witteman. Subclinical atherosclerosis and risk of atrial fibrillation. The Rotterdam Study, *Arch Intern Med* 167 (2007) 382-387.
- [10] S. Goto, D.L. Bhatt, J. Rother, M. Alberts, M.D. Hill, Y. Ikeda, S. Uchiyama, R. D'Agostino, E.M. Ohman, C.S. Liao, A.T. Hirsch, J.L. Mas, P.W. Wilson, R. Corbalán, F. Aichner, P.G. Steg; REACH Registry Investigators. Prevalence, clinical profile, and cardiovascular outcomes of atrial fibrillation patients with atherothrombosis, *Am Heart J* 156 (2008) 855–863.

FIGURE LEGENDS**Figure 1. Kaplan-Meier curves showing cumulative hazards of developing atrial fibrillation (AF), by single or multiple subclinical organ damage (TOD).**

Data are adjusted for age, gender, LDL-cholesterol, systolic BP, BMI, and smoking status. Event rates are per 100 person-years. IMT=intima-media thickness; LVH=left ventricular hypertrophy; e-GFR=estimated glomerular filtration rate; F=female; M=male. Blue line=0 TOD; green line=1 TOD; yellow line=2 TOD; red line=3 TOD

Figure 2. Synergism between subclinical organ damage (TOD) for predicting atrial fibrillation (AF).

Expected and observed hazard ratios (HRs) for incident AF are represented by dashed and white bars, respectively. Interestingly, the excess risk caused by the interaction of all TOD (synergy index) was 4.5 times high, accounting for an observed HR of 13.354 (95%CI=9.751-18.290; $P<0.0001$). IMT=intima-media thickness; e-GFR=estimated glomerular filtration rate; LVH=left ventricular hypertrophy.

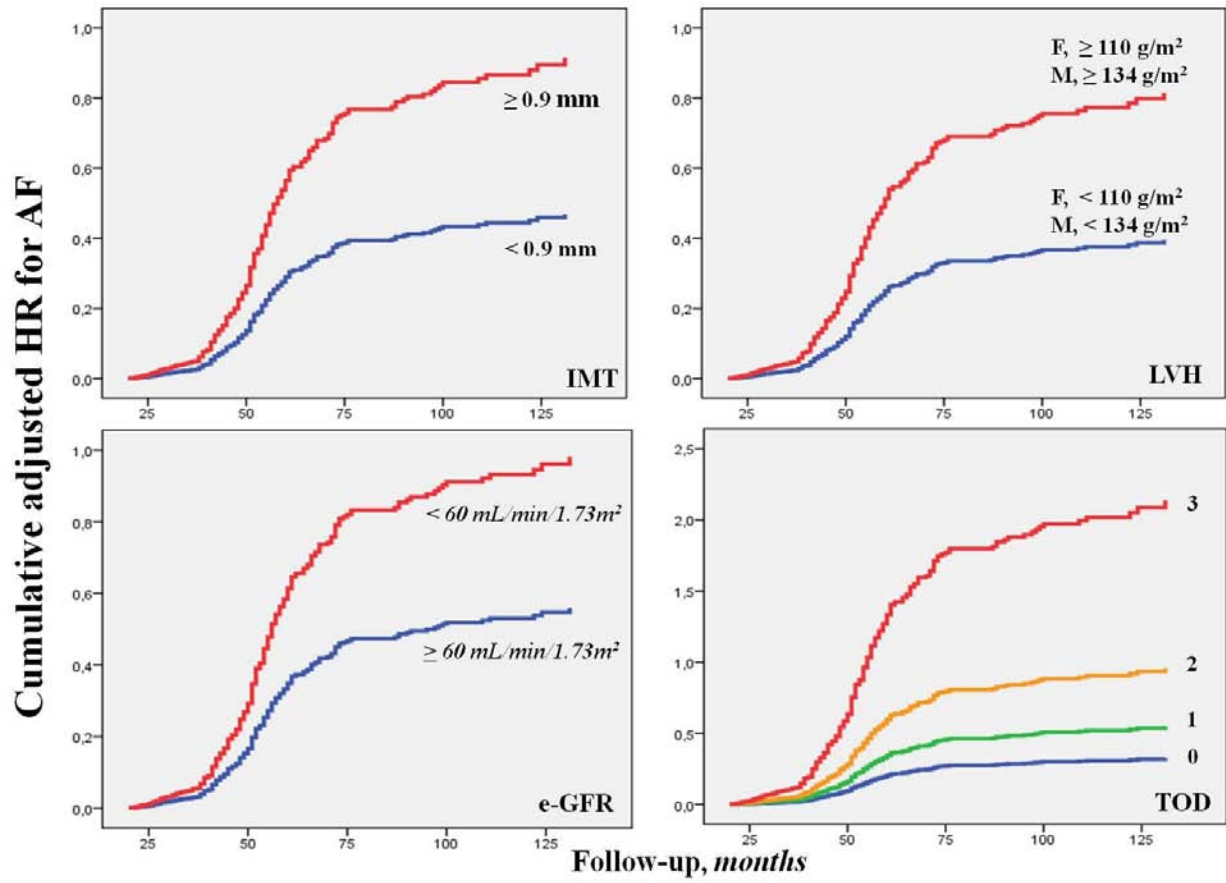


Figure 1

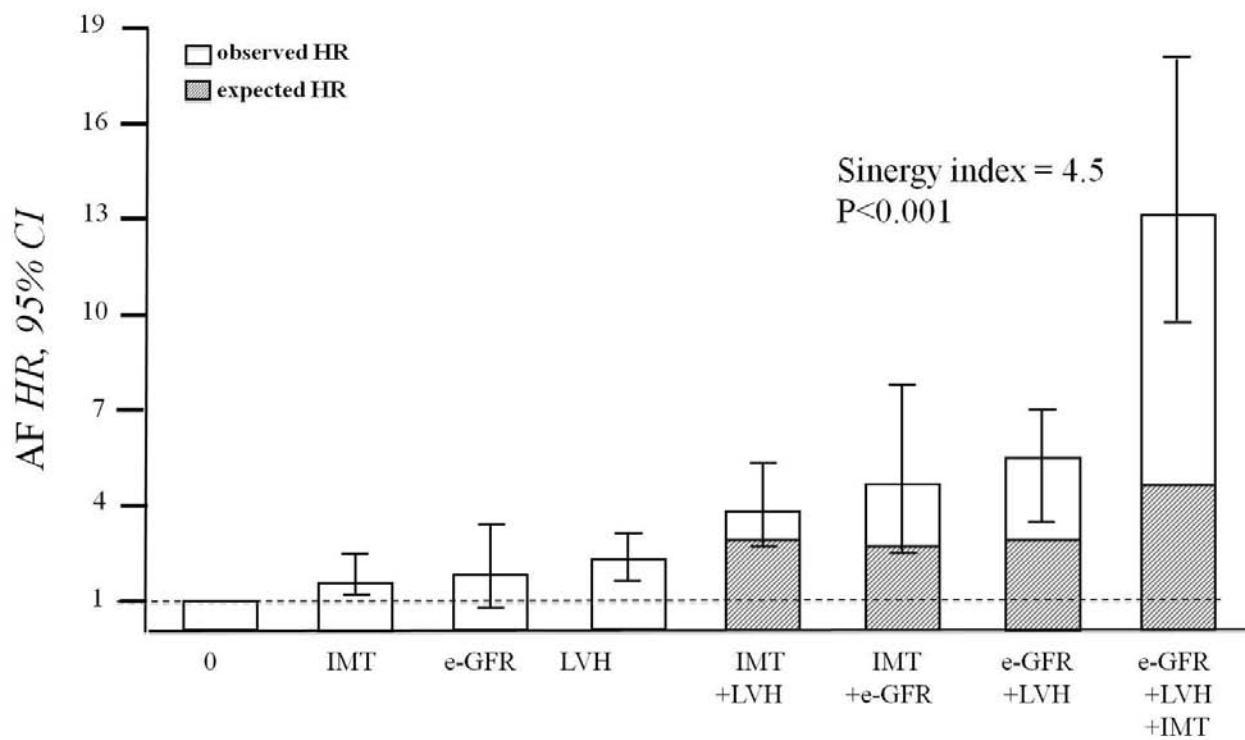


Figure 2