

Role of the *Candida albicans* MNN1 gene family in cell wall structure and virulence

Bates, Steven; Hall, Rebecca A; Cheetham, Jill; Netea, Mihai G; Maccallum, Donna M; Brown, Alister JP; Odds, Frank C; Gow, Neil A R

DOI:

[10.1186/1756-0500-6-294](https://doi.org/10.1186/1756-0500-6-294)

License:

Creative Commons: Attribution (CC BY)

Document Version

Publisher's PDF, also known as Version of record

Citation for published version (Harvard):

Bates, S, Hall, RA, Cheetham, J, Netea, MG, Maccallum, DM, Brown, AJP, Odds, FC & Gow, NAR 2013, 'Role of the *Candida albicans* MNN1 gene family in cell wall structure and virulence', *BMC Research Notes*, vol. 6, 294. <https://doi.org/10.1186/1756-0500-6-294>

[Link to publication on Research at Birmingham portal](#)

Publisher Rights Statement:

This is an Open Access article distributed under the terms of the Creative Commons Attribution License (<http://creativecommons.org/licenses/by/2.0>), which permits unrestricted use, distribution, and reproduction in any medium, provided the original work is properly cited.

Eligibility for repository checked May 2015

General rights

Unless a licence is specified above, all rights (including copyright and moral rights) in this document are retained by the authors and/or the copyright holders. The express permission of the copyright holder must be obtained for any use of this material other than for purposes permitted by law.

- Users may freely distribute the URL that is used to identify this publication.
- Users may download and/or print one copy of the publication from the University of Birmingham research portal for the purpose of private study or non-commercial research.
- User may use extracts from the document in line with the concept of 'fair dealing' under the Copyright, Designs and Patents Act 1988 (?)
- Users may not further distribute the material nor use it for the purposes of commercial gain.

Where a licence is displayed above, please note the terms and conditions of the licence govern your use of this document.

When citing, please reference the published version.

Take down policy

While the University of Birmingham exercises care and attention in making items available there are rare occasions when an item has been uploaded in error or has been deemed to be commercially or otherwise sensitive.

If you believe that this is the case for this document, please contact UBIRA@lists.bham.ac.uk providing details and we will remove access to the work immediately and investigate.

SHORT REPORT

Open Access

Role of the *Candida albicans* *MNN1* gene family in cell wall structure and virulence

Steven Bates^{1*}, Rebecca A Hall^{2,4}, Jill Cheetham¹, Mihai G Netea³, Donna M MacCallum², Alistair JP Brown², Frank C Odds² and Neil AR Gow²

Abstract

Background: The *Candida albicans* cell wall is the first point of contact with the host, and its outer surface is heavily enriched in mannoproteins modified through the addition of *N*- and *O*-mannan. Previous work, using mutants with gross defects in glycosylation, has clearly identified the importance of mannan in the host-pathogen interaction, immune recognition and virulence. Here we report the first analysis of the *MNN1* gene family, which contains six members predicted to act as α -1,3 mannosyltransferases in the terminal stages of glycosylation.

Findings: We generated single null mutants in all members of the *C. albicans* *MNN1* gene family, and disruption of *MNN14* led to both *in vitro* and *in vivo* defects. Null mutants in other members of the family demonstrated no phenotypic defects, suggesting that these members may display functional redundancy. The *mnn14* Δ null mutant displayed hypersensitivity to agents associated with cell wall and glycosylation defects, suggesting an altered cell wall structure. However, no gross changes in cell wall composition or *N*-glycosylation were identified in this mutant, although an extension of phosphomannan chain length was apparent. Although the cell wall defects associated with the *mnn14* Δ mutant were subtle, this mutant displayed a severe attenuation of virulence in a murine infection model.

Conclusion: *Mnn14* plays a distinct role from other members of the *MNN1* family, demonstrating that specific *N*-glycan outer chain epitopes are required in the host-pathogen interaction and virulence.

Keywords: *Candida albicans*, Glycosylation, Mannoproteins, Cell wall, *MNN1*, Virulence

Findings

Background

Candida albicans is the most common opportunistic fungal pathogen of humans causing superficial infections of the mucosa, and life threatening systemic infections in immunocompromised and severely ill patients [1-3]. The fungal cell wall is a dynamic structure required for maintaining cell shape and providing protection from changes in the extracellular environment. In addition, the cell wall acts as the first point of contact with the host and plays an essential role in the host-fungal interaction. The cell wall is composed of an inner skeletal layer of β -glucans and chitin, decorated with an outer layer enriched in mannoproteins that are heavily post-translationally modified through the addition of *N*- and

O-linked mannans [4-6]. These mannans have been shown to play a vital role in cell wall integrity, adhesion and virulence, and constitute one of the main *C. albicans* pathogen associated molecular patterns (PAMPs) recognised by the host innate immune system [7-16].

In *C. albicans* structural studies of *O*-mannan have shown that it typically consists of one to five α 1,2-linked mannose residues attached to serine or threonine, and that these are required for full virulence [11,12]. In addition studies using anti- β -mannan specific antibodies have demonstrated that *O*-mannan may also contain β 1,2-linked mannose residues [13], presumably added by members of the *BMT* family [14]. This is different to *Saccharomyces cerevisiae* where *O*-mannan consists of one to two α 1,2-linked mannose residues capped with α 1,3-linked mannose residues transferred by members of the *Mnn1* family. *N*-glycosylation is initiated in the endoplasmic reticulum (ER) with the transfer of the *N*-mannan precursor ($\text{Glc}_3\text{Man}_9\text{GlcNAc}_2$) to specific

* Correspondence: s.bates@ex.ac.uk

¹College of Life and Environmental Sciences, University of Exeter, Exeter EX4 4QD, UK

Full list of author information is available at the end of the article

asparagine residues in the protein. The precursor is then processed by ER resident glycosidases to form the mature Man₈GlcNAc₂ core conserved across eukaryotes [10]. In *C. albicans* as well as other fungi, the core is then extensively modified through outer chain elaboration as the protein passes through the Golgi [7,14,16,17]. Outer chain elaboration is initiated through the addition of a single α1,6-linked mannose residue to the core by Och1 [7], and the subsequent extension of the α1,6-backbone by the sequential action of the mannan polymerase I and II enzyme complexes [17,18]. The α1,6-backbone is then further elaborated with side chains, which in *C. albicans* consists of α1,2-, α1,3-, and β1,2-linked mannose residues [14,16,19]. In addition both *N*-mannan and *O*-mannan structures can be further modified through the addition of phosphomannan, which in *C. albicans* consists of a chain of β1,2-linked mannose residues attached through a phosphodiester linkage [10,20,21].

Previous work has clearly identified outer chain *N*-glycosylation as an important factor in the host-fungal interaction and virulence [7,8,10,14-16]. However, most work to date has focused on the early stages of outer chain elaboration where the mutants display gross defects in glycosylation. In *S. cerevisiae* the *MNN1/2* family contains genes involved in the elaboration of *O*- and *N*-mannan; in particular the *MNN1* sub-family encodes α1,3-mannosyltransferases important for the addition of the terminal mannose residues in *O*- and *N*-mannan [22,23]. In *C. albicans* we have identified six *MNN1* family members and here we report the first analysis of this gene family in *C. albicans*. Null mutants in most of its members displayed no alteration of phenotype, suggesting possible functional redundancy. However, the *mnn14Δ* mutant, whilst displaying only subtle cell wall changes, was severely attenuated in virulence, demonstrating that specific glycans are important in the host-fungal interaction.

Results and discussion

Analysis and disruption of *C. albicans* *MNN1* family members

Our analysis of assembly 21 of the *C. albicans* genome identified a gene family of 12 members homologous to the *S. cerevisiae* *MNN1/2* family. Similar to *S. cerevisiae* this family could be divided into two subfamilies based on homology to either *MNN1* or *MNN2*. Six members of the *C. albicans* *MNN1* family were identified (orf19.4279, orf19.4900, orf19.4270, orf19.6996, orf19.753 and orf19.6313) and designated *MNN1*, *MNN12*, *MNN13*, *MNN14*, *MNN15* and *MNN16*. The proteins encoded by this family share 19-44% homology between members (Table 1, Figure 1) and a characteristic type II membrane protein topology, with a single N-terminal membrane spanning region (17–19 amino acids) preceded by a short

Table 1 Homology of *MNN1* gene family products

Protein	% Identity (% similarity) ^a					
	Mnn1	Mnn12	Mnn13	Mnn14	Mnn15	Mnn16
Mnn1	100% (100%)	-	-	-	-	-
Mnn12	43.8% (60.7%)	100% (100%)	-	-	-	-
Mnn13	42.8% (62.0%)	37.7% (55.9%)	100% (100%)	-	-	-
Mnn14	31.3% (47.3%)	32.9% (49.34%)	32.2% (49.1%)	100% (100%)	-	-
Mnn15	24.3% (39.5%)	24.8% (39.6%)	25.9% (41.8%)	26.1% (42.8%)	100% (100%)	-
Mnn16	21.9% (35.4%)	19.0% (31.8%)	21.2% (36.1%)	24.6% (39.8%)	21.4% (36.5%)	100% (100%)

^a Identity and similarity were calculated over the full length of the protein.

(5–13 amino acid) cytosolic tail. All Mnn1 family members, except Mnn16, contain the conserved DxD motif known to be important for substrate and co-factor binding [24], suggesting that Mnn16 may have altered functionality. The *MNN1* family shows varying numbers in the sequenced CUG clade species [25] with *C. albicans*, *Candida tropicalis* and *Candida parapsilosis* encoding 6, 8, and 4 members respectively, compared to the non-pathogenic or infrequent pathogens, *Lodderomyces elongisporus*, *Candida guilliermondii*, *Candida lusitanae*, and *Debaryomyces hansenii* which have 5, 4, 3 and 3 members respectively.

Single null mutants in all *MNN1* family members were generated through sequential gene deletion, and the *URA3* marker was introduced at the *RPS1* locus to avoid problems associated with its ectopic expression. To control against second site mutations two independently constructed null mutants were generated for each member of the family and shown to display comparable phenotypes. The mutants all had growth rates similar to the wild type control strain (doubling time 1.4 h) in SC

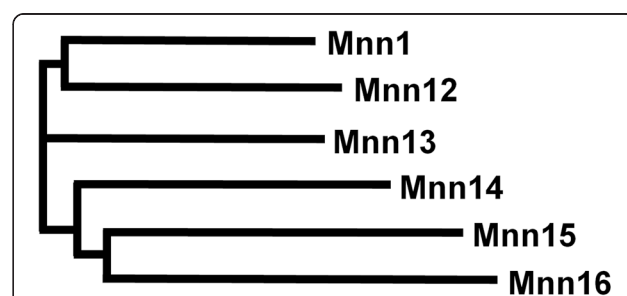


Figure 1 Phylogram of the *C. albicans* *MNN1* gene family. A multiple sequence alignment and phylogram of the six *MNN1* orthologues was generated in Clustal Omega (version 1.1.0).

medium at 30°C, and displayed no morphological defects, such as cellular aggregation, which has previously been seen in mutants displaying glycosylation defects [7-10,16]. In terms of hyphal development all of the *MNN1* family mutants underwent morphogenesis in response to 20% serum. However, the *mnn14Δ* null mutant displayed a defect in response to the weaker hypha-inducing signal of pH and temperature, with cells constitutively forming pseudohyphae in response to Lee's medium at pH 6.5 and 37°C. In addition, the *mnn14Δ* null mutant also failed to form filaments on solid spider medium (Figure 2).

Glycosylation defects in the *MNN1* family mutants

The effect of disruption of the *MNN1* family members on *N*-linked glycosylation was initially assessed through monitoring the electrophoretic mobility of secreted Hex1 (β -*N*-acetylhexosaminidase) by activity staining following native gel electrophoresis [7]. None of the *MNN1* family mutants displayed the increased electrophoretic mobility of Hex1 that is normally associated with a deficiency in *N*-glycosylation, as demonstrated by *och1Δ* and *pmr1Δ* mutants [7,8], indicating no gross *N*-glycosylation defects in the *MNN1* family mutants (Figure 3A). However, the *mnn14Δ* null mutant instead demonstrated a noticeable decrease in Hex1 mobility following native gel electrophoresis (Figure 3A). This decrease in electrophoretic mobility could be suggestive of an increased level of glycosylation of Hex1 in this mutant. Alternatively, an alteration in the level, or extent of, phosphomannan modification could affect the surface charge of Hex1, which would impact on its mobility in a native gel.

To screen for more subtle glycosylation defects, and to discount the impact of altered surface charge on electrophoretic mobility, we epitope tagged Hex1 with V5-6xHis in the null mutants and conducted Western blot analysis of Hex1-V5-6xHis following standard denaturing gel electrophoresis. Following Western blot analysis

Hex1-V5-6xHis was apparent in both an unmodified (67 kDa) and a heavily glycosylated (~125 kDa) form in soluble protein extracts. In the *pmr1Δ* mutant, which is known to display glycosylation defects [8], the glycosylated form of Hex1-V5-6xHis demonstrated a clear increase in electrophoretic mobility characteristic of this mutant's gross defect in glycosylation. However, no change in electrophoretic mobility of the glycosylated form of Hex1-V5-6xHis was observed for any of the *MNN1* family mutants (Figure 3B), demonstrating that none of these mutants displayed a gross defect in *N*-glycosylation. In addition, this would suggest that the decreased electrophoretic mobility of Hex1 seen in the *mnn14Δ* null mutant following native gel electrophoresis and activity staining is likely to be due to differences in the proteins surface charge and not the overall level of glycosylation.

Phosphomannan, attached to *O*- and *N*- mannan through a phosphodiester linkage, can affect the native charge of proteins. The overall level of phosphomannan incorporation into the cell wall can be estimated through the use of the phthalocyanine dye, Alcian Blue, which binds to phosphorylated polysaccharides [20,26]. None of the *MNN1* family null mutants displayed altered Alcian Blue binding (Table 2), indicating that each displays a similar level of phosphomannan at the cell surface. This would also suggest that the decreased native gel mobility of Hex1 from *mnn14Δ* cells was not due to a decrease in the overall level of phosphomannan present. The surface charge associated with phosphomannan is also dependent on the chain length of β 1,2-mannose residues present [26,27]. Therefore, we also directly analysed phosphomannan structure in the *MNN1* family null mutants by TLC. The wild type strain, and the majority of the mutants, displayed the expected profile of one to five β 1,2-mannose residues. However, the *mnn14Δ* null mutant clearly displayed an altered profile with a preponderance for longer chains and an increased chain length of one to eight residues (Figure 3C). Extension of the phosphomannan

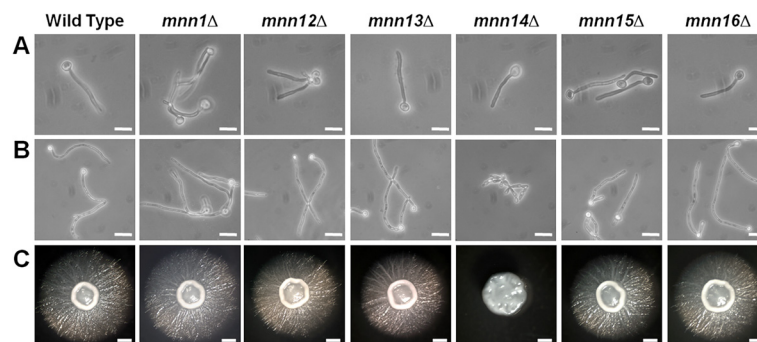


Figure 2 Cell and colony morphology of *MNN1* family mutants. Cell morphology after growth at 37°C in 20% serum for 4 h (A) and at 37°C in Lee's at pH6.5 for 6 h (B). Scale bar, 10 μ m. (C) Colony morphology after 6 days growth at 30°C on solid Spider medium. Scale bar, 1 mm.

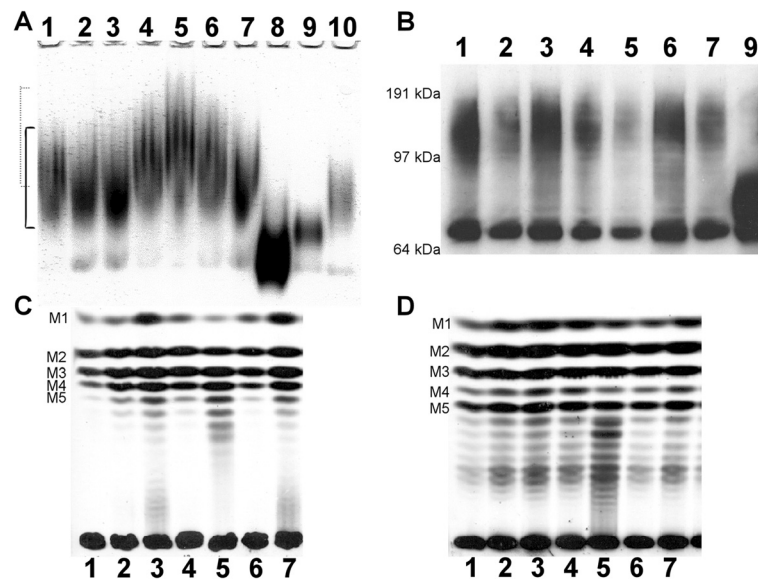


Figure 3 Glycosylation defects in *C. albicans* MNN1 family null mutants. The extent of *N*-glycosylation was determined by activity staining of Hex1 (β -*N*-acetylhexosaminidase) after protein samples were separated by non-denaturing gel electrophoresis (A). The continuous and dotted lines indicate the normal and decreased electrophoretic mobility of Hex1 respectively. The degree of *N*-glycosylation modification was also determined by western blot analysis of Hex1-V5-6x His tagged strains (B). Hex1-V5-6x His is apparent in both an unmodified (67 kDa) and a heavily glycosylated (~125 kDa) form. Acid-labile phosphomannan (C) and β -eliminated *O*-mannan (D) were released from [3 H] mannose-labelled cells and separated by TLC. Samples are as follows: lane 1, wild type; lane 2, *mnn1* Δ ; lane 3, *mnn12* Δ ; lane 4, *mnn13* Δ ; lane 5, *mnn14* Δ ; lane 6, *mnn15* Δ ; lane 7, *mnn16* Δ ; lane 8, *och1* Δ ; lane 9, *pmr1* Δ ; lane 10, *mnt1* Δ -*mnt2* Δ .

chain has previously been identified as playing a major role in the modulation of cell surface charge, with longer phosphomannan chains resulting in the loss of charge demonstrated by an increase in hydrophobicity of the cell wall [26,27]. Therefore the increase in the degree of phosphomannan extension seen in the *mnn14* Δ null mutant could reduce the surface charge associated with Hex1 which would then explain its decreased mobility under native conditions even though its overall level of modification is not grossly altered.

The structure of *O*-linked mannans was also assessed by TLC and no significant differences were observed in any of the MNN1 family mutants (Figure 3D). This is consistent with the previous finding that Mnt1 and Mnt2 are the

principal enzymes involved in the extension of *O*-glycans, and that *C. albicans* lacks α 1,3-linked residues in its *O*-mannan [11].

Cell wall associated defects

To examine cell wall integrity we screened the MNN1 family null mutants for sensitivity to a range of cell wall perturbing agents. The *mnn14* Δ null mutant was clearly hypersensitive to SDS, tunicamycin, and hygromycin B which is characteristic of glycosylation mutants (Figure 4). However, no increase in sensitivity was seen to the cell wall perturbing agent Calcofluor White, suggesting that the *mnn14* Δ null mutant does not have a defect in the general robustness of the cell wall. No other family members displayed altered sensitivity to any of the compounds tested. Changes in cell wall structure were also assessed through HPLC sugar composition analysis, but no gross alteration in the relative proportions of the three main cell wall polysaccharides (glucan, mannan and chitin) was identified for any of the MNN1 family null mutants (data not shown).

Defects in the initiation of *O*-glycosylation or treatment with tunicamycin, which inhibits *N*-glycosylation, have previously been shown to impair biofilm formation [28,29]. We therefore screened the MNN1 family mutants for defects in biofilm formation, using a 96 well microplate model and XTT reduction assay to measure metabolic activity of the cells within the biofilm. As pre-

Table 2 Alcian blue binding

Strain genotype	Alcian blue binding \pm SD (μ g bound/OD ₆₀₀ 1.0)
Wild type	183.1 \pm 8.7
<i>mnn1</i> Δ	148.2 \pm 21.6
<i>mnn12</i> Δ	143.3 \pm 37.4
<i>mnn13</i> Δ	175.3 \pm 7.4
<i>mnn14</i> Δ	181.9 \pm 3.9
<i>mnn15</i> Δ	184.1 \pm 2.6
<i>mnn16</i> Δ	191.1 \pm 6.7
<i>och1</i> Δ	25.2 \pm 2.2

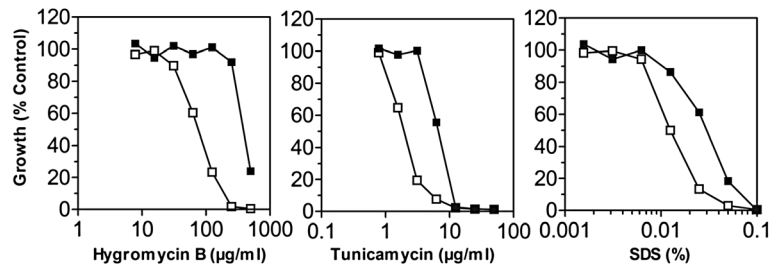


Figure 4 Sensitivity of *C. albicans mnn14Δ* null mutant to cell wall perturbing agents. The sensitivities of the wild type (closed squares) and *Camnn14Δ* null mutant (open squares) to cell wall perturbing agents were determined by a broth microdilution method. The agents to which the *Camnn14Δ* null mutant displayed hypersensitivity are shown (hygromycin B, tunicamycin, and SDS).

dicted the *och1Δ* mutant [7], which has a gross defect in *N*-linked glycosylation, displayed a severe biofilm defect demonstrating a 90% reduction in biofilm formation at 48 h, therefore confirming the importance of *N*-mannan in biofilm formation. In addition the *mnt1Δ-mnt2Δ* double mutant [11], which lacks the 4 terminal mannose residues in *O*-mannan, also displayed a clear biofilm defect (80% reduction). This indicates that the extension of *O*-mannan, in addition to the initiation of its synthesis, is also important for biofilm formation. However, none of the *MNN1* family single mutants displayed a significant defect in biofilm formation (Figure 5). This lack of a phenotypic defect may be due to functional redundancy in the *MNN1* family. Alternatively, it may suggest that only gross *N*-glycosylation defects impact upon biofilm formation rather than its being dependent on specific epitopes. Indeed, the *pmr1Δ* null mutant, which displays both *O*- and *N*-linked glycosylation defects, but to a lesser extent than the individual defects seen in the *och1Δ* or *mnt1Δ-mnt2Δ* mutants, only displays a subtle biofilm defect (40% reduction at 48 h). Therefore, biofilm formation is dependent both on correct *O*-

glycosylation and the overall level of *N*-glycosylation, presumably through their impact on cellular interactions.

Host-pathogen interaction and virulence

As cell wall mannan has been shown to play an important role in the stimulation of the host response [15] we tested the ability of the null mutants to induce cytokine production by human PBMCs. All the *MNN1* family mutants were as potent at stimulating TNF α and IL-6 production as wild type *C. albicans* (data not shown). Virulence of the single mutants was tested in a *Galleria mellonella* larvae model of infection. In this model all larvae infected with the wild type strain succumbed to infection by day 2, whereas 75% of larvae infected with the *pmr1Δ* mutant, which displays a gross defect in glycosylation, survived to the end of the experiment. However, none of the *MNN1* family mutants displayed a virulence defect, demonstrating that none of the individual family members are required for virulence in this model. Because the *mnn14Δ* mutant displayed an altered phenotype *in vitro* we tested its virulence in a murine model of disseminated infection; in addition the *mnn1Δ* and *mnn12Δ* mutants were also tested. The *mnn1Δ* and *mnn12Δ* null mutants were unaltered in virulence. However, the *mnn14Δ* null mutant was clearly attenuated in virulence (log-rank test; $p < 0.001$) with all mice surviving to the end of the experiment at 28 days compared to a median survival time of 9 days for the wild type control. Mice infected with the *mnn14Δ* null mutant also displayed a clear reduction in tissue burdens at 28 days compared to that seen post-mortem following infection with the wild type strain, with a >2 log reduction in kidney burdens (\log_{10} CFU/g 4.0 ± 1.3 cf. 6.5 ± 0.4) and a 1 log reduction in the brain (\log_{10} CFU/g 3.3 ± 0.9 cf. 4.3 ± 0.4). Hence the *mnn14Δ* null mutant was significantly attenuated in virulence in the murine model of systemic candidiasis.

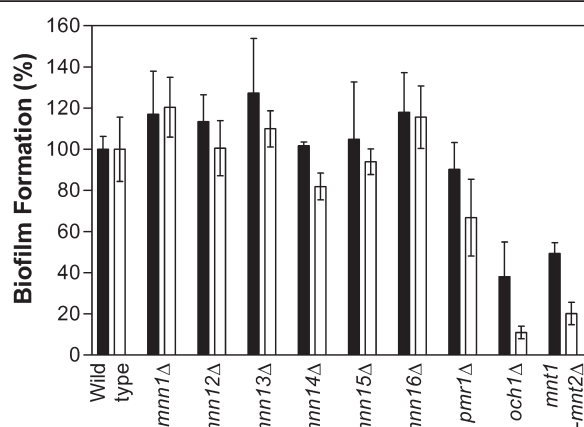


Figure 5 Biofilm formation of *MNN1* family mutants. Biofilm formation was assessed in 96 well plates using a tetrazolium salt (XTT) reduction assay following growth in SC medium for 24 h (closed bars) and 48 h (open bars).

Conclusion

The *C. albicans* cell wall is the immediate point of contact between the invading fungus and the host, and previous

work has clearly identified both *O*- and *N*- mannan structures as important in the host-pathogen interaction and virulence. In this study, we present the first analysis of the *C. albicans* *MNN1* gene family, which is predicted to encode capping enzymes involved in the terminal stages of glycosylation. We generated single null mutants in the six members of the *C. albicans* *MNN1* gene family. The majority of the mutants generated, with the exception of the *mnn14Δ* null mutant, demonstrated no discernible change

in phenotype potentially due to functional redundancy as seen with some other *C. albicans* mannosyltransferase gene families [9,11,16]. Disruption of *MNN14* however led to both *in vitro* and *in vivo* defects. The *mnn14Δ* null mutant displayed subtle morphogenesis defects and hypersensitivity to agents associated with cell wall and glycosylation defects, suggesting altered cell wall structure or permeability. However, no gross changes in cell wall composition or *N*-glycan extension were identified, although

Table 3 *C. albicans* strains

Strain	Parent strain	Genotype	Reference
CAI-4	-	<i>ura3Δ::imm434/ura3Δ::imm434</i>	[32]
SN78	-	<i>ura3Δ::imm434/ura3Δ::imm434, leu2Δ/leu2Δ, his1Δ/his1Δ</i>	[33]
NGY152	CAI-4	As CAI-4 but <i>RPS1/rps1Δ::Clp10</i>	[35]
SBC106	CAI-4	As CAI-4 but <i>MNN1/mnn1Δ::hisG-URA3-hisG</i>	This study
SBC107	SBC106	As CAI-4 but <i>MNN1/mnn1Δ::hisG</i>	This study
SBC108	SBC107	As CAI-4 but <i>mnn1Δ::hisG/mnn1Δ::hisG-URA3-hisG</i>	This study
SBC109	CAI-4	As CAI-4 but <i>MNN12/mnn12Δ::hisG-URA3-hisG</i>	This study
SBC110	SBC109	As CAI-4 but <i>MNN12/mnn12Δ::hisG</i>	This study
SBC111	SBC110	As CAI-4 but <i>mnn12Δ::hisG/mnn12Δ::hisG-URA3-hisG</i>	This study
SBC112	SBC108	As CAI-4 but <i>mnn1Δ::hisG/mnn1Δ::hisG</i>	This study
SBC113	SBC111	As CAI-4 but <i>mnn12Δ::hisG/mnn12Δ::hisG</i>	This study
SBC114	SBC112	As CAI-4 but <i>mnn1Δ::hisG/mnn1Δ::hisG, RPS1/rps1Δ::Clp10</i>	This study
SBC115	SBC113	As CAI-4 but <i>mnn12Δ::hisG/mnn12Δ::hisG, RPS1/rps1Δ::Clp10</i>	This study
SBC122	SN78	As SN78 but <i>MNN13/mnn13Δ::CmLeu2</i>	This study
SBC123	SN78	As SN78 but <i>MNN14/mnn14Δ::CmLeu2</i>	This study
SBC124	SN78	As SN78 but <i>MNN15/mnn15Δ::CmLeu2</i>	This study
SBC135	SN78	As SN78 but <i>MNN16/mnn16Δ::CmLeu2</i>	This study
SBC126	SBC122	As SN78 but <i>mnn13Δ::CmLeu2/mnn13Δ::CdHIS1</i>	This study
SBC127	SBC123	As SN78 but <i>mnn14Δ::CmLeu2/mnn14Δ::CdHIS1</i>	This study
SBC128	SBC124	As SN78 but <i>mnn15Δ::CmLeu2/mnn15Δ::CdHIS1</i>	This study
SBC129	SBC135	As SN78 but <i>mnn16Δ::CmLeu2/mnn16Δ::CdHIS1</i>	This study
SBC130	SBC126	As SN78 but <i>mnn13Δ::CmLeu2/mnn13Δ::CdHIS1, RPS1/rps1Δ::Clp10</i>	This study
SBC131	SBC127	As SN78 but <i>mnn14Δ::CmLeu2/mnn14Δ::CdHIS1, RPS1/rps1Δ::Clp10</i>	This study
SBC132	SBC128	As SN78 but <i>mnn15Δ::CmLeu2/mnn15Δ::CdHIS1, RPS1/rps1Δ::Clp10</i>	This study
SBC133	SBC129	As SN78 but <i>mnn16Δ::CmLeu2/mnn16Δ::CdHIS1, RPS1/rps1Δ::Clp10</i>	This study
SBC163	SBC130	As SN78 but <i>mnn13Δ::CmLeu2/mnn13Δ::CdHIS1, RPS1/rps1Δ::Clp10, HEX1/HEX1-V5-6xHis-NAT1</i>	This study
SBC164	SBC131	As SN78 but <i>mnn14Δ::CmLeu2/mnn14Δ::CdHIS1, RPS1/rps1Δ::Clp10, HEX1/HEX1-V5-6xHis-NAT1</i>	This study
SBC165	SBC132	As SN78 but <i>mnn15Δ::CmLeu2/mnn15Δ::CdHIS1, RPS1/rps1Δ::Clp10, HEX1/HEX1-V5-6xHis-NAT1</i>	This study
SBC166	SBC133	As SN78 but <i>mnn16Δ::CmLeu2/mnn16Δ::CdHIS1, RPS1/rps1Δ::Clp10, HEX1/HEX1-V5-6xHis-NAT1</i>	This study
SBC161	SBC114	As CAI-4 but <i>mnn1Δ::hisG/mnn1Δ::hisG, RPS1/rps1Δ::Clp10, HEX1/HEX1-V5-6xHis-NAT1</i>	This study
SBC162	SBC115	As CAI-4 but <i>mnn12Δ::hisG/mnn12Δ::hisG, RPS1/rps1Δ::Clp10, HEX1/HEX1-V5-6xHis-NAT1</i>	This study
SBC158	NGY152	As NGY152 but <i>HEX1/HEX1-V5-6xHis-NAT1</i>	[36]
SBC159	-	<i>pmr1Δ::hisG/pmr1Δ::hisG HEX1/HEX1-V5-6xHis-URA3</i>	[36]
NGY355	-	As CAI-4 but <i>pmr1Δ::hisG/pmr1Δ::hisG, RPS1/rps1Δ::Clp10</i>	[8]
NGY357	-	As CAI-4 but <i>och1Δ::hisG/och1Δ::hisG, RPS1/rps1Δ::Clp10</i>	[7]
NGY337	-	As CAI-4 but <i>mnt1-mnt2Δ::hisG/mnt1-mnt2Δ::hisG, RPS1/rps1Δ::Clp10</i>	[11]

an extension of phosphomannan chains was apparent. This extension of phosphomannan in the *mn14Δ* null mutant could be a compensatory mechanism for its absence, through an increase in the expression, or activity, of other mannosyltransferases. Alternatively Mnn14 could potentially act as a capping enzyme to terminate extension similar to the proposed role of *MNN1* in *S. cerevisiae* [30]. Although the *mn14Δ* null mutant only displayed subtle cell wall defects this mutant did display a severe defect in virulence in a murine infection model, apparent both in terms of overall survival and associated tissue burdens. This virulence defect was not associated with differences in the induction of inflammatory responses, as no defect was seen in the TNF α and IL-6 host cytokine production *in vitro*, which suggests that the virulence defect may not be due to an alteration of the host response. Overall, therefore, the *MNN1* family appears to display redundancy, with the exception of *MNN14*, which may therefore play a distinct role either in the synthesis of specific epitopes or in the modification of a discrete protein(s) required for virulence and the host-pathogen interaction.

Methods

Strains, media and culture conditions

C. albicans strains were grown in yeast and hyphal forms as described previously [7]. To induce β -*N*-acetylhexosaminidase expression strains were grown in SC-GlcNAc (0.67% yeast nitrogen base, 0.079% complete supplement mixture, 25 mM *N*-acetylglucosamine). Biofilm formation in the mutants was assessed using a tetrazolium salt (XTT) reduction assay following growth in SC medium for 24 and 48 h [31]. Null mutants in *MNN1* (orf19.4279) and *MNN12* (orf19.4900) were generated by the “Ura-blaster” protocol in strain CAI-4 [32]. Briefly, the 5' and 3' regions of homology were amplified by PCR (MNN1 5' primer pair MNN1-5H/5S, 3' primer pair MNN1-3A/3B; MNN12 5' primer pair MNN12-5H/5S, 3' primer pair MNN12-3A/3B) and cloned into the HindIII/SphI and Asp718/BanII sites of the disruption vector pMB-7 respectively. The ura-blaster cassettes were then released by digestion with HindIII and BanII and genes disrupted in CAI-4 by sequential gene replacement and recycling of the *URA3* marker by selection on SD medium plus 5-fluoroorotic acid (1 mg/ml) and uridine (50 μ g/ml). Single null mutants in the other family members, *MNN13* (orf19.4270), *MNN14* (orf19.6996) *MNN15* (orf19.753) and *MNN16* (orf19.6313), were generated through PCR mediated disruption [33]. Primers (MNNxx-KO-F/-R) were designed to contain 70 bp homology to the gene of interest, and disruption cassettes amplified from pSN40 (*C. maltosa LEU2*) and pSN52 (*C. dubliniensis HIS1*). Amplified cassettes were then sequentially transformed into strain SN78 to generate null mutants. The *URA3* marker was integrated at the *RPS1* locus in all mutants by

transformation with the StuI-digested Clp10 vector [34], to avoid problems associated with its expression [35]. To control against second site mutations two independently constructed null mutants were generated and screened for each member of the family. Strain genotypes and the oligonucleotides used in their construction are listed in Tables 3 and 4. The wild type strain used for phenotypic studies throughout was NGY152 [35] derived from CAI-4 with the Clp10 vector integrated at the *RPS1* locus.

Cell wall and glycosylation analysis

Null mutants were screened for sensitivity to cell wall stressing agents by the microdilution method as previously reported [7]. Briefly, standardised inocula (A_{600} = 0.01) of strains in YEPD medium were incubated with cell wall stressing agents, across a range of doubling dilutions, for 16 h at 30°C and the A_{600} was determined. The agents tested (maximum concentrations in parentheses) included Calcofluor White (500 μ g/ml), Congo Red (500 μ g/ml), SDS (0.1%), hygromycin B (500 μ g/ml), NaCl (2 M) and tunicamycin (50 μ g/ml). Phosphomannan content and *N*-glycosylation status were determined by Alcian Blue binding assays and β -*N*-acetylhexosaminidase (Hex1) native PAGE zymograms as reported elsewhere [7]. In addition the *N*-glycosylation status was assessed by Western

Table 4 Oligonucleotides used for strain construction

Primer	Sequence (5'-3') ^a
MNN1-5H	AAGCTTtctacagtggtgtaataatg
MNN1-5S	GCATGcgaaaactcatacaattcactaag
MNN1-3A	GGTACtgccttactcaagtggtggtg
MNN1-3B	GAGCTCgtagtggtgctgtatcaaaag
MNN12-5H	AAGCTTatcataacacggttcgttcagc
MNN12-5S	GCATGctgacagatcatcgcttccatc
MNN12-3A	GGTACCatgccattattccaccaatgg
MNN12-3B	GAGCTCgtagtgactggtgctccac
MNN13-KO-F	gttgacttgaagagccactgtatattccctaagacggtgctattgaaac aacaacaattggatgattattatGCTCGGATCCACTAGTAACG
MNN13-KO-R	ttaattttccaaccatacatctcctaagtaattgaaatgcaatttctcagg ggtataactcaaccaataaccaCCAGTGTGATGGATATCTGC
MNN14-KO-F	atgcattttattggcaatcacaagccaattctggaataactaaaaaat gaattatcactgacatcaagatccccGCTCGGATCCACTAGTAACG
MNN14-KO-R	ctataaataattatccccatccatactcccccaagcttttaaaatgttctatt tcctctggtgaataaattatCCAGTGTGATGGATATCTGC
MNN15-KO-F	cgtataagggaaactttatcatgatagtaaaaaattgatctcgagagctaaag caagctagcttgagataagaaaagGCTCGGATCCACTAGTAACG
MNN15-KO-R	ctttatccgaaccaggtccaagtctcagtttaatttaacttttgctctattttg gatccaccagtggtccatCCAGTGTGATGGATATCTGC
MNN16-KO-F	gaagttccatctaaaagatgatgatgacttactcaactactactctttt ttcttatttcagacgacaatttctGCTCGGATCCACTAGTAACG
MNN16-KO-R	ttaacttgtaacaaaattcaatttcttatattttttgtaaaactttgttcaa cattaatagataatctcctaCCAGTGTGATGGATATCTGC

^a Gene-specific sequences are lowercase.

blot analysis of mutant strains carrying the V5-6xHis tagged Hex1 protein as a glycosylation reporter as described previously [36]. Cell wall carbohydrate composition was determined by acid hydrolysis of the cell wall carbohydrate polymers and quantification of constituent monosaccharides following high performance anion exchange chromatography [37]. Finally, for the analysis of phosphomannan and O-linked mannan, strains were labelled with D-[2-³H] mannose, mannans released through mild acid treatment and β -elimination respectively and separated through thin layer chromatography (TLC) [7].

Virulence assays

Isolation of human peripheral blood mononuclear cells (PMBCs) and cytokine stimulation assays were carried out as described previously [15]. For the wax moth larvae infection model groups of 8 larvae were infected with 3×10^5 CFU of *C. albicans* through the last left proleg and survival monitored over 7 days at 37°C. To test virulence in a murine infection model groups of 6 female BALB/c mice were intravenously challenged with 3.6×10^4 CFU/g (body weight) *C. albicans* and monitored over 28 days. Animals showing signs of illness or disease were humanely terminated and recorded as dying the following day, and those surviving the course of the experiment were terminated on day 28. The kidneys and brain were aseptically removed post-mortem, homogenised, and tissue burdens determined by viable counting. Experiments were conducted under the terms of a UK Home Office licence and were approved by the University of Aberdeen Ethical Review Committee.

Competing interests

The authors declare that they have no competing interests.

Authors' contributions

SB conducted the experimental work and drafted the manuscript. RAH and JC assisted with the experimental work. MGN carried out the immunoassays. DMM conducted the murine infection model. SB, AJPB, FCO and NARG conceived the study, participated in its design and co-ordination. All authors read and approved the final manuscript.

Acknowledgements

This work was supported by a Wellcome Trust Programme grant (080088) to NG, FO and AB and by a FP7-2007-2013 grant agreement (HEALTH-F2- 2010-260338-ALLFUN) and BBSRC SABR (CRISP) award. MGN was supported by a Vici grant of the Netherlands Organization for Scientific Research. JC was supported by a UK Biotechnology and Biological Sciences Research Council project grant (BB/F009232/1) to SB.

Author details

¹College of Life and Environmental Sciences, University of Exeter, Exeter EX4 4QD, UK. ²School of Medical Sciences, University of Aberdeen, Aberdeen AB25 2ZD, UK. ³Department of Medicine, Radboud University Nijmegen Medical Center, Nijmegen HB 6500, The Netherlands. ⁴Current address: School of Biosciences and Institute of Microbiology & Infection, The University of Birmingham, Edgbaston, Birmingham B15 2TT, UK.

Received: 30 April 2013 Accepted: 24 July 2013
Published: 26 July 2013

References

1. Leroy O, Gangneux JP, Montravers P, Mira JP, Gouin F, Sollet JP, Carlet J, Reynes J, Rosenheim M, Regnier B, Lortholary O: **Epidemiology, management, and risk factors for death of invasive *Candida* infections in critical care: a multicenter, prospective, observational study in France (2005–2006).** *Crit Care Med* 2009, **37**:1612–1618.
2. Perltroth J, Choi B, Spellberg B: **Nosocomial fungal infections: epidemiology, diagnosis, and treatment.** *Med Mycol* 2007, **45**:321–346.
3. Pfaller MA, Diekema DJ: **Epidemiology of invasive mycoses in North America.** *Crit Rev Microbiol* 2010, **36**:1–53.
4. Klis FM, de Groot P, Hellingwerf K: **Molecular organization of the cell wall of *Candida albicans*.** *Med Mycol* 2001, **39**(Suppl 1):1–8.
5. Mora-Montes HM, Ponce-Noyola P, Villagomez-Castro JC, Gow NA, Flores-Carreón A, Lopez-Romero E: **Protein glycosylation in *Candida*.** *Future Microbiol* 2009, **4**:1167–1183.
6. Ruiz-Herrera J, Elorza MV, Valentin E, Sentandreu R: **Molecular organization of the cell wall of *Candida albicans* and its relation to pathogenicity.** *FEMS Yeast Res* 2006, **6**:14–29.
7. Bates S, Hughes HB, Munro CA, Thomas WP, MacCallum DM, Bertram G, Atrih A, Ferguson MA, Brown AJ, Odds FC, Gow NA: **Outer chain N-glycans are required for cell wall integrity and virulence of *Candida albicans*.** *J Biol Chem* 2006, **281**:90–98.
8. Bates S, MacCallum DM, Bertram G, Munro CA, Hughes HB, Buurman ET, Brown AJ, Odds FC, Gow NA: ***Candida albicans* Pmr1p, a secretory pathway P-type Ca²⁺/Mn²⁺-ATPase, is required for glycosylation and virulence.** *J Biol Chem* 2005, **280**:23408–23415.
9. Mora-Montes HM, Bates S, Netea MG, Castillo L, Brand A, Buurman ET, Diaz-Jimenez DF, Jan Kullberg B, Brown AJ, Odds FC, Gow NA: **A multifunctional mannosyltransferase family in *Candida albicans* determines cell wall mannan structure and host-fungus interactions.** *J Biol Chem* 2010, **285**:12087–12095.
10. Mora-Montes HM, Bates S, Netea MG, Diaz-Jimenez DF, Lopez-Romero E, Zinker S, Ponce-Noyola P, Kullberg BJ, Brown AJ, Odds FC, et al: **Endoplasmic reticulum alpha-glycosidases of *Candida albicans* are required for N glycosylation, cell wall integrity, and normal host-fungus interaction.** *Eukaryot Cell* 2007, **6**:2184–2193.
11. Munro CA, Bates S, Buurman ET, Hughes HB, MacCallum DM, Bertram G, Atrih A, Ferguson MA, Bain JM, Brand A, et al: **Mnt1p and Mnt2p of *Candida albicans* are partially redundant alpha-1,2-mannosyltransferases that participate in O-linked mannosylation and are required for adhesion and virulence.** *J Biol Chem* 2005, **280**:1051–1060.
12. Rouabhia M, Schaller M, Corbucci C, Vecchiarelli A, Prill SK, Giasson L, Ernst JF: **Virulence of the fungal pathogen *Candida albicans* requires the five isoforms of protein mannosyltransferases.** *Infect Immun* 2005, **73**:4571–4580.
13. Fradin C, Slomianny MC, Mille C, Masset A, Robert R, Sendid B, Ernst JF, Michalski JC, Poulain D: **β -1,2 Oligomannose adhesin epitopes are widely distributed over the different families of *Candida albicans* cell wall mannoproteins and are associated through both N- and O-glycosylation processes.** *Infect Immun* 2008, **76**:4509–4517.
14. Mille C, Bobrowicz P, Trinell PA, Li H, Maes E, Guerdardel Y, Fradin C, Martinez-Esparza M, Davidson RC, Janbon G, et al: **Identification of a new family of genes involved in beta-1,2-mannosylation of glycans in *Pichia pastoris* and *Candida albicans*.** *J Biol Chem* 2008, **283**:9724–9736.
15. Netea MG, Gow NA, Munro CA, Bates S, Collins C, Ferwerda G, Hobson RP, Bertram G, Hughes HB, Jansen T, et al: **Immune sensing of *Candida albicans* requires cooperative recognition of mannans and glucans by lectin and toll-like receptors.** *J Clin Invest* 2006, **116**:1642–1650.
16. Hall RA, Bates S, Lenardon MD, MacCallum DM, Wagener J, Lowman DW, Kruppa MD, Williams DL, Odds FC, Brown AJP, et al: **The Mnn2 mannosyltransferase family modulates mannoprotein fibril length, immune recognition and virulence of *Candida albicans*.** *PLoS Pathog* 2013, **9**:e1003276.
17. Dean N: **Asparagine-linked glycosylation in the yeast Golgi.** *Biochim Biophys Acta* 1999, **1426**:309–322.
18. Southard SB, Specht CA, Mishra C, Chen-Weiner J, Robbins PW: **Molecular analysis of the *Candida albicans* homolog of *Saccharomyces cerevisiae* MNN9, required for glycosylation of cell wall mannoproteins.** *J Bacteriol* 1999, **181**:7439–7448.
19. Kobayashi H, Shibata N, Osaka T, Miyagawa Y, Ohkubo Y, Suzuki S: **Structural study of cell wall mannan of a *Candida albicans* (serotype A) strain.** *Phytochemistry* 1992, **31**:1147–1153.

20. Hobson RP, Munro CA, Bates S, MacCallum DM, Cutler JE, Heinsbroek SE, Brown GD, Odds FC, Gow NA: **Loss of cell wall mannosylphosphate in *Candida albicans* does not influence macrophage recognition.** *J Biol Chem* 2004, **279**:39628–39635.
21. Trinel PA, Lepage G, Jouault T, Strecker G, Poulain D: **Definitive chemical evidence for the constitutive ability of *Candida albicans* serotype A strains to synthesize beta-1,2 linked oligomannosides containing up to 14 mannose residues.** *FEBS Lett* 1997, **416**:203–206.
22. Romero PA, Lussier M, Veronneau S, Sdicu AM, Herscovics A, Bussey H: **Mnt2p and Mnt3p of *Saccharomyces cerevisiae* are members of the Mnn1p family of alpha-1,3-mannosyltransferases responsible for adding the terminal mannose residues of O-linked oligosaccharides.** *Glycobiology* 1999, **9**:1045–1051.
23. Yip CL, Welch SK, Klebl F, Gilbert T, Seidel P, Grant FJ, O'Hara PJ, MacKay VL: **Cloning and analysis of the *Saccharomyces cerevisiae* MNN9 and MNN1 genes required for complex glycosylation of secreted proteins.** *Proc Natl Acad Sci USA* 1994, **91**:2723–2727.
24. Wiggins CA, Munro S: **Activity of the yeast MNN1 alpha-1,3-mannosyltransferase requires a motif conserved in many other families of glycosyltransferases.** *Proc Natl Acad Sci USA* 1998, **95**:7945–7950.
25. Butler G, Rasmussen MD, Lin MF, Santos MA, Sakthikumar S, Munro CA, Rheinbay E, Grabherr M, Forche A, Reedy JL, et al: **Evolution of pathogenicity and sexual reproduction in eight *Candida* genomes.** *Nature* 2009, **459**:657–662.
26. Masuoka J, Hazen KC: **Differences in the acid-labile component of *Candida albicans* mannan from hydrophobic and hydrophilic yeast cells.** *Glycobiology* 1999, **9**:1281–1286.
27. Masuoka J, Hazen KC: **Cell wall mannan and cell surface hydrophobicity in *Candida albicans* serotype A and B strains.** *Infect Immun* 2004, **72**:6230–6236.
28. Peltroche-Llacsahuanga H, Goyard S, D'Enfert C, Prill SK, Ernst JF: **Protein O-mannosyltransferase isoforms regulate biofilm formation in *Candida albicans*.** *Antimicrob Agents Chemother* 2006, **50**:3488–3491.
29. Pierce CG, Thomas DP, Lopez-Ribot JL: **Effect of tunicamycin on *Candida albicans* biofilm formation and maintenance.** *J Antimicrob Chemother* 2009, **63**:473–479.
30. Lussier M, Sdicu AM, Bussey H: **The KTR and MNN1 mannosyltransferase families of *Saccharomyces cerevisiae*.** *Biochim Biophys Acta* 1999, **1426**:323–334.
31. Ramage G, Vande Walle K, Wickes BL, Lopez-Ribot JL: **Standardized method for *in vitro* antifungal susceptibility testing of *Candida albicans* biofilms.** *Antimicrob Agents Chemother* 2001, **45**:2475–2479.
32. Fonzi WA, Irwin MY: **Isogenic strain construction and gene mapping in *Candida albicans*.** *Genetics* 1993, **134**:717–728.
33. Noble SM, Johnson AD: **Strains and strategies for large-scale gene deletion studies of the diploid human fungal pathogen *Candida albicans*.** *Eukaryot Cell* 2005, **4**:298–309.
34. Murad AM, Lee PR, Broadbent ID, Barelle CJ, Brown AJ: **Clp10, an efficient and convenient integrating vector for *Candida albicans*.** *Yeast* 2000, **16**:325–327.
35. Brand A, MacCallum DM, Brown AJ, Gow NA, Odds FC: **Ectopic expression of URA3 can influence the virulence phenotypes and proteome of *Candida albicans* but can be overcome by targeted reintegration of URA3 at the RPS10 locus.** *Eukaryot Cell* 2004, **3**:900–909.
36. Milne SW, Cheetham J, Lloyd D, Aves S, Bates S: **Cassettes for PCR-mediated gene tagging in *Candida albicans* utilizing nourseothricin resistance.** *Yeast* 2011, **28**:833–841.
37. Munro CA, Whitton RK, Hughes HB, Rella M, Selvaggini S, Gow NA: **CHS8-a fourth chitin synthase gene of *Candida albicans* contributes to *in vitro* chitin synthase activity, but is dispensable for growth.** *Fungal Genet Biol* 2003, **40**:146–158.

doi:10.1186/1756-0500-6-294

Cite this article as: Bates et al.: Role of the *Candida albicans* MNN1 gene family in cell wall structure and virulence. *BMC Research Notes* 2013 **6**:294.

Submit your next manuscript to BioMed Central and take full advantage of:

- Convenient online submission
- Thorough peer review
- No space constraints or color figure charges
- Immediate publication on acceptance
- Inclusion in PubMed, CAS, Scopus and Google Scholar
- Research which is freely available for redistribution

Submit your manuscript at
www.biomedcentral.com/submit

