

# The Effect of Combined Exercise Versus Aerobic Exercise on Cognition and Mood among Hypertensive Older Adults

Santos, Wellington M. dos; Veiga Sardeli, Amanda; Moraes, Daisa Fabiele Godoi; Gadelha, Victor Bueno ; Gaspari, Arthur Fernandes; Cavaglieri, Cláudia Regina; Middleton, Laura; Chacon-Mikahil, Mara Patrícia Traina

DOI:

[10.36648/1791-809X.16.1.909](https://doi.org/10.36648/1791-809X.16.1.909)

License:

Creative Commons: Attribution (CC BY)

*Document Version*

Publisher's PDF, also known as Version of record

*Citation for published version (Harvard):*

Santos, WMD, Veiga Sardeli, A, Moraes, DFG, Gadelha, VB, Gaspari, AF, Cavaglieri, CR, Middleton, L & Chacon-Mikahil, MPT 2022, 'The Effect of Combined Exercise Versus Aerobic Exercise on Cognition and Mood among Hypertensive Older Adults: Randomized Clinical Trial', *Health Science Journal*, vol. 16, no. 1, 909. <https://doi.org/10.36648/1791-809X.16.1.909>

[Link to publication on Research at Birmingham portal](#)

## General rights

Unless a licence is specified above, all rights (including copyright and moral rights) in this document are retained by the authors and/or the copyright holders. The express permission of the copyright holder must be obtained for any use of this material other than for purposes permitted by law.

- Users may freely distribute the URL that is used to identify this publication.
- Users may download and/or print one copy of the publication from the University of Birmingham research portal for the purpose of private study or non-commercial research.
- User may use extracts from the document in line with the concept of 'fair dealing' under the Copyright, Designs and Patents Act 1988 (?)
- Users may not further distribute the material nor use it for the purposes of commercial gain.

Where a licence is displayed above, please note the terms and conditions of the licence govern your use of this document.

When citing, please reference the published version.

## Take down policy

While the University of Birmingham exercises care and attention in making items available there are rare occasions when an item has been uploaded in error or has been deemed to be commercially or otherwise sensitive.

If you believe that this is the case for this document, please contact [UBIRA@lists.bham.ac.uk](mailto:UBIRA@lists.bham.ac.uk) providing details and we will remove access to the work immediately and investigate.

DOI: 10.36648/1791-809X.16.1.909

## The Effect of Combined Exercise Versus Aerobic Exercise on Cognition and Mood among Hypertensive Older Adults: Randomized Clinical Trial

Wellington Santos<sup>1\*</sup>, Amanda Sardeli<sup>1,2</sup>, Daisa Fabiele<sup>1</sup>, Victor Gadelha<sup>1</sup>, Arthur Fernandes Gáspari<sup>1</sup>, Cláudia Cavaglieri<sup>1,2</sup>, Laura Middleton<sup>3</sup> and Mara Patrícia Chacon-Mikahil<sup>1,2</sup>

### Abstract

Comorbidities such as hypertension is a risky factor to impair cognitive function in elderly. Both strength and aerobics (CT, combined exercise) or aerobics (AT) has potential benefits for healthy as well as hypertensive elderly. Our goal was to evaluate the effects of CT and AT on cognition and mood. 52 hypertensive older adults were randomized to 16 weeks of CT (n=26) or group control (GC) (n=26), after this period subjects in the CONTROL began AT (AT) for 16 weeks. Delta between post and pre were calculated and normality was tested. One-way ANOVA to compared groups (CT, AT and CONTROL) follow by post-hoc of by Hechberg and Kruskal-Wallis test followed by Mann-Whitney, for CT and GC or Wilcoxon for GC and AT, depending upon parametric assumption. Improvements in aerobics fitness for both CT and AT (H (2) = 13.89 p<0.001 and p<0.001), working memory (H (2) = 10.07, p=0.02 and p=0.007), speed processing (H (2) = 10.51, p=0.004 and p=0.019), and overall executive function (F (2, 42) = 4.862, p=0.05 and p=0.01) when compared to CONTROL. Improvement in depressive symptoms to CT (H (2) = 18.08, p<0.001) compared to CONTROL only and tendencies to improve short-term memory (F (2, 47) = 3.26, p=0.06) Both CT and AT improve cognitive functions (working memory, overall executive function, speed processing), only CT were able to modified depressive symptoms and short-term memory. Additional benefits for CT would be attached to social interaction, improvement in blood flow or IGF-I release.

**Keywords:** Aging; Exercise; Dementia; Combined exercise; Aerobic exercise

**Received:** 29-Dec-2021, Manuscript No. iphsj-21-12205; **Editor assigned:** 31-Dec-2021, Preqc No. iphsj-21-12205 (PQ); **Reviewed:** 14-Jan-2022, QC No. iphsj-21-12205; **Revised:** 19 Jan-2022, Manuscript No. iphsj-21-12205; (R); **Published:** 27-Jan-2022, DOI: 10.36648/1791-809X.16.1.909

### Introduction

Dementia prevalence is expected to double or triple over the next generation [1-6], making identification of preventative strategies is crucial. Sedentary lifestyle and hypertension are risky factors which lead to cognitive problems and vascular dementia by deposition of  $\beta$ -amyloid, as well as white matter lesions, commonly named as silent brain lesions [7]. Exercise has potential benefits for hypertensive people [2].

Aerobic (AT) and resistance training (RT) may improve cognition and mood among older adults without healthy problems [4,5]. Combined training (CT) may have additive effects, as AT and RT may act through different pathways [1]. We compared 16 weeks of CT, AT on cognition and depressive symptoms among hypertensive older adults.

### Methods

52 hypertensive older adults were randomized to 16 weeks of CT (n=26) or CONTROL (n=26) (www.braziliantrials.com, U1111-

- 1 Laboratory of Exercise Physiology (FISEX), Faculty of Physical Education, University of Campinas (UNICAMP), Campinas, SP, Brazil
- 2 Gerontology Program, Faculty of Medical Sciences, University of Campinas (UNICAMP), Campinas, SP, Brazil
- 3 Brain Body Lab, Department of Kinesiology, University of Waterloo, Waterloo, Ontario, Canada

**\*Corresponding author:**  
Wellington Santos

✉ well.martins.santos@gmail.com

Laboratory of Exercise Physiology (FISEX), Faculty of Physical Education, University of Campinas (UNICAMP), Campinas, SP, Brazil

**Citation:** Santos W, Sardeli A, Fabiele D, Gadelha V, Gáspari AF, et al. (2021) The Effect of Combined Exercise Versus Aerobic Exercise on Cognition and Mood among Hypertensive Older Adults: Randomized Clinical Trial. Health Sci J. Vol. 16 No. 1: 909.

1181-4455); methods are detailed elsewhere [8]. CONTROL participants were invited to 16weeks of AT after the CONTROL period (**Figure 1**). Briefly, participants were  $\geq 60$  years, had hypertension, and did physical activity  $\leq 2x/week$ . Participants provided written informed consent. The Ethics Committee at University of Campinas (CAEE 54943216.7.0000.5404) approved the study.

AT and CT participants completed 50min of AT 3x/week on a treadmill at a speed corresponding to 63%  $VO_2$  max, as identified in a progressive maximum exercise test ( $VO_{2peak}$ ). In 2 sessions/week, CT participants also did 15min of RT prior to AT, performing

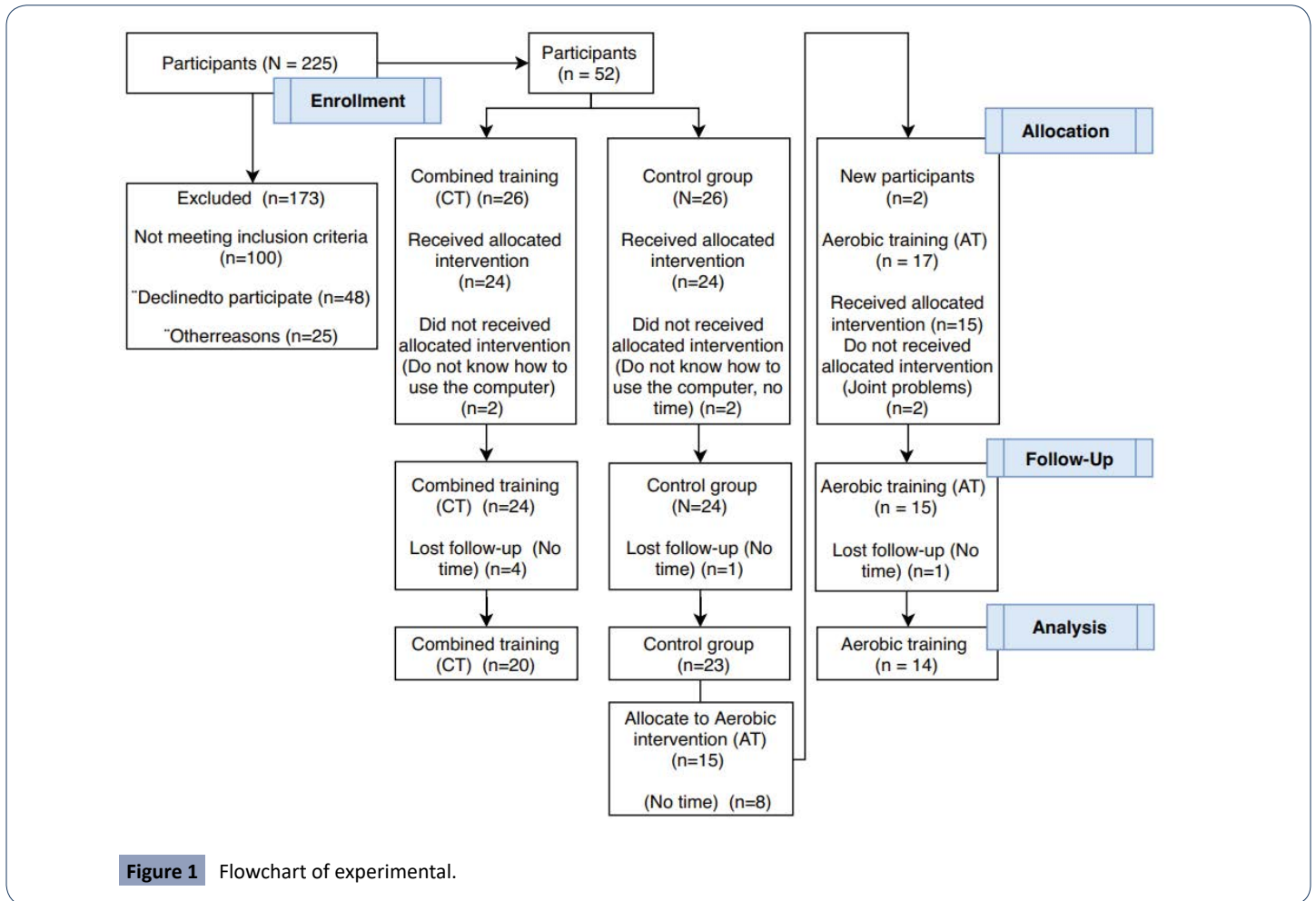


Figure 1 Flowchart of experimental.

15 repetitions of 6 exercises across major muscle groups at an intensity of 5-6 (“strong”) on the 10-point Borg rating of perceived exertion scale. The CONTROL participants have maintained their baseline physical activity level.

Assessments were at baseline, 16 weeks, and 32 weeks (AT only). Short- and long-term memory were measured using Shopping List Test and working memory (errors to find the right pathway), inhibitory control (perseverative errors), and overall executive function (sum of scores) were assessed with the Groton Maze Task (Cog State), depression by Geriatric Depression Scale (GDS) and blood samples for BDNF analyses (Premixed Multiplex). Chi-square was used to compare categorical data. One-way ANOVA, followed by Hechberg post hoc was performed, or Kruskal-Wallis test followed by Mann-Whitney, for CT and GC or Wilcoxon for GC and AT, depending upon parametric assumption ( $p < 0.05$ ) (R Core team, Vienna, Austria).

## Results

Twenty participants in CT and 23 in CONTROL completed the trial (Figure 1). From CONTROL, 15 agreed to participate in AT with an additional 2 recruited; 14 of 17 completed.

Table 1 shows baseline characteristics and changes over 16-weeks. Compared to CONTROL, CT and AT improved aerobic fitness ( $H(2) = 13.89$ ,  $p < 0.001$  and  $p < 0.001$ ), working memory

( $H(2) = 10.07$ ,  $p = 0.02$  and  $p = 0.007$ ), speed processing ( $H(2) = 10.51$ ,  $p = 0.004$  and  $p = 0.019$ ), and overall executive function ( $F(2, 42) = 4.862$ ,  $p = 0.05$  and  $p = 0.01$ ). CT also improved depressive symptoms ( $H(2) = 18.08$ ,  $p < 0.001$ ) and neared significance for short-term memory ( $F(2, 47) = 3.26$ ,  $p = 0.06$ ) compared to CONTROL; participants in AT kept unchanged to CONTROL for depressive symptoms ( $H(2) = 18.08$ ,  $p < 0.73$ ) and short-term memory ( $F(2, 47) = 13.67$ ,  $p = 0.99$ ).

## Discussion and Conclusion

Among hypertensive older adults, 16 weeks of AT or CT improved executive function and speed processing. CT also improved depressive symptoms and neared significance for short-term memory, whereas AT did not, providing evidence that CT may be more beneficial for mental health in aging.

There are several reasons for which CT may carry more benefits. One study suggests that RT acts through an IGF-1 pathway, whereas AT acts through a BDNF pathway [1]. CT stimulates pathways, inducing more brain changes even though, no changes in BDNF levels. Improvements in CF for CT lays in social engagement hypothesis, since AT has less human contact and did not improve depressive symptoms and short-term memory [3].

In conclusion, our study suggests that both AT and CT are beneficial to cognitive function. Additional benefits can be achieved by CT, on memory because possibly by human contact.

**Table 1** Baseline characteristics and changes in outcomes over 16-week period, expressed as mean (SD) or % (n).

	CT (N =20)	AT (N=14)	CONTROL (N=23)	p-value
<b>Baseline</b>				
Age	64.9 (4.3)	67.9 (6.1)	66.3 (5.5)	0.13
Gender, % women	70 (14.0)	64 (9.0)	60 (14)	0.92
Age	64.9 (4.3)	67.9 (6.1)	66.3 (5.5)	0.13
Height (m)	1.5 (0.1)	1.5 (0.1)	1.5 (0.1)	0.37
Weight (kg)	78.8 (12.6)	73.7 (9.8)	78.9 (11.2)	0.07
BMI	29.1 (4.2)	28.8 (4.3)	30.3 (3.3)	0.13
SBP (mmHg)	133.5 (17)	134.1 (12.6)	134.9 (24.4)	0.45
DBP (mmHg)	87.2 (10.6) <sup>a</sup>	75.6 (9.7)	82.9 (12.2)	<b>0.01</b>
MMSE (0-30)	24.9 (2.7)	25.8 (2.5)	26.2 (2.6)	0.08
Years of study	10.8 (4.5)	10.4 (4.8)	11.2 (4.1)	0.73
GDS (0 - 15)	4.4 (2.9)	2.0 (1.1)	3 (2.58)	0.49
<b>Change over 16weeks on Cognition</b>				
Working memory (GM RER)	-2.76 (6.9) <sup>b</sup>	-2.77 (4.7) <sup>c</sup>	2.32 (4.0)	<b>&lt;0.001</b>
Inhibitory control (GM PER)	-0.24 (0.9)	-0.08 (0.3)	-0.05(0.2)	0.80
Overall Executive function (GM TER)	-3.47 (7.9) <sup>b</sup>	-5.18 (4.5) <sup>c</sup>	1.71 (5.2)	<b>0.01</b>
Short-term memory (SL3)	1.53 (2.4) <sup>d</sup>	-0.08 (2.1)	0 (1.7)	<b>0.04</b>
Long-term memory (SLR)	0.71 (2.2)	-0.08 (2.1)	-0.12 (1.6)	0.13
Speed processing (Time I)	-0.22 (0.3) <sup>b</sup>	-0.25 (0.3) <sup>b</sup>	0.07 (0.2)	<b>&lt;0.001</b>
<b>Change over 16weeks on mechanics behind cognitive function changing</b>				
VO2 (ml/kg/min)	2.87 (3.4) <sup>b</sup>	2.63 (2.1) <sup>c</sup>	-0.38 (2.3)	<b>&lt;0.001</b>
BDNF (pg/dL)	-1129.86 (4289.2)	588.6 (3316.9)	943.62 (6203.4)	0.42
GDS (0-15)	-2.79 (2.2) <sup>a, b</sup>	-0.09 (0.7)	0.05 (1.6)	<b>&lt;0.001</b>

BMI: Body mass index; SBP: Systolic blood pressure; DBP: Diastolic blood pressure; MMSE: Mini-mental state exam; VO2: Maximal oxygen consumption; GML-RER: Groton maze learning rule break; GML-PER: Groton Maze learning perseverance error; GML-TER: Groton maze learning total error; ISL3: International shopping list third stage; ISRL: International shopping list latter recall; GDS: Geriatric depression scale.  
**a** Significant difference between CT and AT;  
**b** Significant difference between CT and Control;  
**c** Significant difference between AT e Control;  
**d** Trends to difference between CT and Control.

## References

- Cassilhas RC, Lee KS, Fernandes J, Oliveira MGM, Tufik S, et al. (2012) Spatial Memory Is Improved by Aerobic and Resistance Exercise through Divergent Molecular Mechanisms. *Neuroscience* 202: 309-317.
- Cornelissen VA, Smart NA (2013) Exercise Training for Blood Pressure: A Systematic Review and Meta-analysis. *J Am Heart Assoc* 2: e004473.
- Ertel KA, Glymour MM, Berkman LF (2008) Effects of Social Integration on Preserving Memory Function in a Nationally Representative US Elderly Population. *Am J Public Health* 98: 1215-1220.
- Josefsson T, Lindwall M, Archer T (2014) Physical Exercise Intervention in Depressive Disorders: Meta-Analysis and Systematic Review. *Scand J Med Sci Sports* 24: 259-272.
- Northey JM, Cherbuin N, Pumpa KL, Smee DJ, Rattray B (2018) Exercise Interventions for Cognitive Function in Adults Older than 50: A Systematic Review with Meta-Analysis. *Br J Sports Med* 52: 154-160.
- Prince M, Comas-Herrera M, Knapp M, Guerchet M, Karagiannidou M (2016) World Alzheimer Report 2016-Improving Healthcare for People Living with Dementia: Coverage, Quality and Costs Now and in the Future. *Alzheimer's disease International*.
- Qiu C, Fratiglioni L (2015) A Major Role for Cardiovascular Burden in Age-Related Cognitive Decline. *Nat Rev Cardio* 12: 267-277.
- Sardeli AV, Gáspari AF, dos Santos WL, Moraes DFG, Gadelha VB, et al (2018) Time-course of health-related adaptations in response to combined training in hypertensive elderly: immune and autonomic modulation interactions. *Motriz: Rev Educ Fis* 24.