

Silver-Coated Teflon Tubes for Waveguiding at 1–2 THz

Navarro-Cia, Miguel; Melzer, Jeffrey E.; Harrington, James A.; Mitrofanov, Oleg

DOI:

[10.1007/s10762-015-0157-5](https://doi.org/10.1007/s10762-015-0157-5)

License:

Creative Commons: Attribution (CC BY)

Document Version

Publisher's PDF, also known as Version of record

Citation for published version (Harvard):

Navarro-Cia, M, Melzer, JE, Harrington, JA & Mitrofanov, O 2015, 'Silver-Coated Teflon Tubes for Waveguiding at 1–2 THz', *Journal of Infrared, Millimeter, and Terahertz Waves*, vol. 36, no. 6, pp. 542-555.
<https://doi.org/10.1007/s10762-015-0157-5>

[Link to publication on Research at Birmingham portal](#)

Publisher Rights Statement:

Published under a Creative Commons Attribution license

Checked Jan 2016

General rights

Unless a licence is specified above, all rights (including copyright and moral rights) in this document are retained by the authors and/or the copyright holders. The express permission of the copyright holder must be obtained for any use of this material other than for purposes permitted by law.

- Users may freely distribute the URL that is used to identify this publication.
- Users may download and/or print one copy of the publication from the University of Birmingham research portal for the purpose of private study or non-commercial research.
- User may use extracts from the document in line with the concept of 'fair dealing' under the Copyright, Designs and Patents Act 1988 (?)
- Users may not further distribute the material nor use it for the purposes of commercial gain.

Where a licence is displayed above, please note the terms and conditions of the licence govern your use of this document.

When citing, please reference the published version.

Take down policy

While the University of Birmingham exercises care and attention in making items available there are rare occasions when an item has been uploaded in error or has been deemed to be commercially or otherwise sensitive.

If you believe that this is the case for this document, please contact UBIRA@lists.bham.ac.uk providing details and we will remove access to the work immediately and investigate.

Silver-Coated Teflon Tubes for Waveguiding at 1–2 THz

**Miguel Navarro-Cía, Jeffrey E. Melzer,
James A. Harrington & Oleg Mitrofanov**

**Journal of Infrared, Millimeter, and
Terahertz Waves**

ISSN 1866-6892

Volume 36

Number 6

J Infrared Milli Terahz Waves (2015)

36:542–555

DOI 10.1007/s10762-015-0157-5

Volume 36 • Number 6 • June 2015

**Journal of
Infrared,
Millimeter,
and Terahertz
Waves**

 Springer

10762 • ISSN 1866-6892
36(6) 513–606 (2015)

 Springer

Your article is published under the Creative Commons Attribution license which allows users to read, copy, distribute and make derivative works, as long as the author of the original work is cited. You may self-archive this article on your own website, an institutional repository or funder's repository and make it publicly available immediately.

Silver-Coated Teflon Tubes for Waveguiding at 1–2 THz

Miguel Navarro-Cía^{1,2,3,4} · Jeffrey E. Melzer⁵ ·
James A. Harrington⁵ · Oleg Mitrofanov⁴

Received: 20 February 2015 / Accepted: 19 March 2015 /

Published online: 15 April 2015

© The Author(s) 2015. This article is published with open access at Springerlink.com

Abstract Realization of single-mode low-loss waveguides for 1.0–2.0 THz remains a challenging problem due to large absorption in most dielectrics and ohmic losses in metals. To address this problem, we investigate dielectric-lined hollow metallic waveguides fabricated by coating 1-mm diameter 38- μm -thick polytetrafluoroethylene tubes with silver. These waveguides support a hybrid HE_{11} mode, which exhibits low attenuation and low dispersion. Quasi-single-mode propagation is achieved in the band of 1.0–1.6 THz, in which the hybrid HE_{11} mode is supported by the waveguide. In this band, the experimentally measured loss is ~ 20 dB/m (~ 0.046 cm^{-1}), whereas the numerically computed loss is ~ 7 dB/m (~ 0.016 cm^{-1}). The difference is attributed to additional losses in the dielectric layer, which can be reduced by using alternative polymers.

Keywords Near-field time-domain microscopy · Terahertz imaging · Terahertz spectroscopy · Terahertz waveguide · Ultrafast measurement

1 Introduction

Dielectric-lined hollow metallic waveguides (HMWs) have become a strong candidate for effective single-mode terahertz (THz) propagation with achievable transmission loss below 1 dB/m [1]. They have been investigated and successfully realized for the frequency band of

✉ Miguel Navarro-Cía
m.navarro@imperial.ac.uk

¹ Optical and Semiconductor Devices Group, Department of Electrical and Electronic Engineering, Imperial College London, London SW7 2AZ, UK

² Centre for Plasmonics and Metamaterials, Imperial College London, London SW7 2AZ, UK

³ Centre for Terahertz Science and Engineering, Imperial College London, London SW7 2AZ, UK

⁴ Department of Electronic and Electrical Engineering, University College London, Torrington Place, London WC1E 7JE, UK

⁵ School of Engineering, Rutgers University, 607 Taylor Road, Piscataway, NJ 08854, USA

1.5–5.0 THz [1–5], where propagation in free-space [6] or in open waveguides [7, 8] is highly restricted due to water vapor absorption [9].

The dielectric-lined HMWs belong to the family of oversized waveguides [10, 11], which were developed to solve the problem of increasing ohmic losses of single-mode coaxial and rectangular waveguides at millimeter-wave frequencies. By introducing a dielectric coating on the inner metallic walls of an oversized waveguide (as a rule of thumb, $\sim\lambda_0/4$ thick), the waveguide dominant mode becomes the linearly polarized hybrid HE_{11} mode [1–5, 11–16]. This HE_{11} mode is advantageous because it suffers low losses and it couples efficiently to free-space linearly polarized Gaussian beams [11, 17]. It also can be coupled to the widely used TE_{10} mode of the rectangular waveguide using a relatively simple conversion [11].

The attenuation of the HE_{11} mode falls rapidly with the waveguide diameter [2, 3, 12, 18, 19]. The diameter to wavelength ratio (d/λ_0) of ~ 4.4 or larger (assuming a low-loss-dielectric layer) reduces the loss below that of the fundamental TE_{11} mode of a silver-only waveguide [18]. For dielectrics with losses, the required diameter to wavelength ratio increases.

Despite the oversized waveguide cross-section, the multimode nature is suppressed in dielectric-lined HMWs as the other modes, e.g., the TE_{11} , TM_{11} , and TE_{12} modes, suffer a significant increase in their attenuation coefficient. This effect is known as self-filtering [11]. The dielectric-lined HMWs as a result can enable quasi-single-mode propagation with transmission loss potentially lower than that of the fundamental modes in the rectangular waveguide (TE_{10}) and in the cylindrical metallic waveguide (TE_{11}) with the fractional bandwidth larger than 50 %.

To realize a polymer-lined HMW with transmission losses <10 dB/m and self-filtering properties for the 0.5–1.5 THz range, the polymer thickness must be between ~ 30 and ~ 120 μm and $d > 0.9$ mm. Depositing uniform polymer layers of such thickness remains a challenge for the dynamic liquid phase fabrication technique [20] used for the 1.5–5.0 THz range. Alternative methods, such as mandrel-winding [5], mechanical-assembling of dielectric and metallic cylinders [11, 13, 14], and high-temperature bonding [21] do not offer a solution because the minimum diameter d for these methods is limited to ~ 3 mm, which allows undesirable higher-order modes, and fabrication tolerances are excessive.

A way to circumvent the obstacle of fabricating dielectric-lined HMWs for $0.5 \text{ THz} < \nu < 1.5 \text{ THz}$ may be found by metallizing the outer surface of polymer tubes [19], which are cheaply and easily available in a wide range of thicknesses and diameters. Among the large catalogue of polymer tubes, those made of polytetrafluoroethylene (PTFE), commonly known by its trade name Teflon, may be good candidates. PTFE was indeed used for the original millimeter-wave dielectric-lined HMWs [11] and it is widely used for many millimeter-wave devices because of its low absorption [22, 23]. Although the absorption of PTFE is not the lowest among polymers and it increases with frequency, this material can serve to test properties of the waveguides fabricated by this method and to establish a benchmark for future investigations with low-loss polymers.

To answer the question whether commercial PTFE tubes are suitable for fabrication of the high-performance dielectric-lined HMW for $0.5 \text{ THz} < \nu < 1.5 \text{ THz}$ band, we characterize transmission of THz pulses through PTFE tubes coated with silver experimentally. The extracted transmission loss properties are compared with eigenmode simulations.

PTFE tubes of 1 mm bore diameter and ~ 38 - μm -thick walls are chosen for this study. According to initial analytical work, the fundamental HE_{11} mode for a waveguide with such

dimensions ($d/\lambda_0 \sim 4.4$) should have attenuation ~ 10 dB/m, similar to the fundamental TE_{11} mode of a silver-only waveguide within the transmission band centered at 1.3–1.4 THz. The silver-only waveguide with the same diameter however is multimode for the whole spectral window studied here.

We fabricate flexible waveguides by coating the PTFE tube with silver. The quasi-single-mode (HE_{11}) propagation is observed after ~ 283 mm of propagation in the waveguide. We find the transmission loss of ~ 20 dB/m within a wide transmission band (~ 1.0 to ~ 1.6 THz) experimentally using the cut-back loss method and the THz time-domain spectroscopy system. The numerical simulations show evolution of mode profiles for the supported modes and their attenuation with frequency, and explain the quasi-single-mode (HE_{11}) propagation. Comparison of the experimental and simulation results suggests that dielectric losses in PTFE used in this study are larger than nominal. Nevertheless, this waveguide concept realized with other lower-loss dielectric tube can lead to quasi-single-mode waveguides outperforming cylindrical metallic waveguides of similar diameter.

2 Fabrication and experimental setup

2.1 Fabrication

The silver-coated PTFE hollow waveguide is fabricated with a three-step procedure [19]. First, the outer surface of the 1-mm-bore diameter flexible PTFE tube (Zeus Inc. [24]) is etched using a commercial etchant, FluorEtch©, from Acton Technologies. As the surface energy of PTFE is exceptionally low, this step is necessary to ensure subsequent adhesion of the silver film. Second, a palladium-based sensitizing solution is used to further treat the tube surface. Finally, the silver layer is formed via dynamic liquid phase deposition of ammonia-complexed silver ion and dextrose solutions.

Thickness of the PTFE layer is verified using the transmission spectrum of the waveguide in the infrared region. Figure 1 shows the spectrum obtained using a Tensor Bruker 37 FTIR spectrometer and liquid-nitrogen-cooled mercury cadmium telluride detector in the 5.5–7 μm range for a 283-mm waveguide. Taking the average interference peak spacing and assuming a refractive index of 1.35, the film thickness is determined to be approximately 35 μm , close to the expected thickness of 38 μm [19].

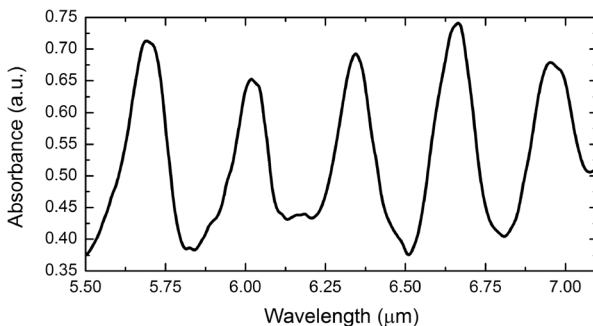


Fig. 1 Infrared spectrum of the 283 mm waveguide obtained with a Tensor Bruker 37 FTIR spectrometer

2.2 Experimental setup

We characterize the waveguide samples using the near-field THz time-domain spectroscopy method (shown in Section 4). Near-field mapping of the terahertz field at the waveguide output allows us to optimize coupling from the incident terahertz pulse and determine the spatial mode profiles. The cut-back loss measurement method also avoids potential errors due to the variation of the coupling coefficient with frequency [4, 25, 26].

The waveguide part of the near-field mode spectroscopy and imaging system [4, 27, 28] is shown in detail in Fig. 2a–c. THz pulses are generated by horizontally polarized (E_x) 100 fs pulses from a Ti:Sapphire mode-locked laser through optical rectification in a 1-mm-thick ZnTe crystal. The generated E_x -polarized THz beam is then collimated by a 3-mm-diameter hyper hemispherical lens. The waveguide sample is placed at a distance of $\sim 500 \mu\text{m}$ away from the lens, see Fig. 2b. The output of the waveguide is mounted on an automated xy translation stage for mapping the waveguide modes and it is positioned within $\sim 1 \text{ mm}$ from the integrated terahertz near-field probe, as shown in Fig. 2c. The near-field probe consists of a low-temperature-grown GaAs photoconductive detector sensitive to the horizontal polarization, E_x , and a $10 \mu\text{m} \times 10 \mu\text{m}$ sub-wavelength aperture [26, 29]. In order to optimize coupling of the incident terahertz beam to the fundamental hybrid waveguide mode and to minimize the excitation of higher-order modes, the xy -position of the input waveguide facet is adjusted while monitoring the output field pattern. The input and the output of the waveguide are enclosed

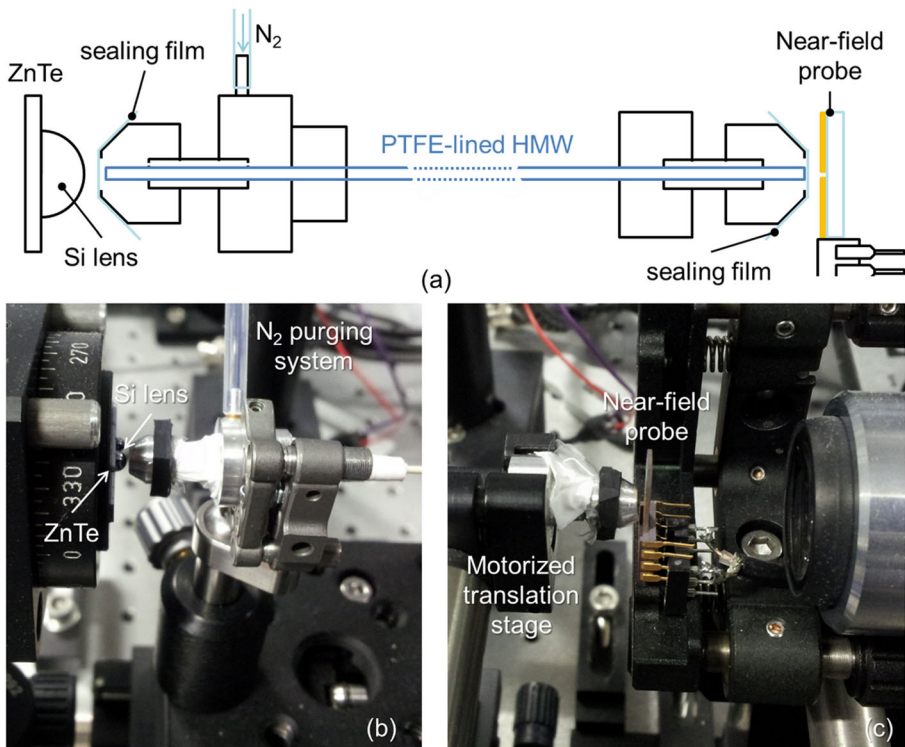


Fig. 2 a Sketch of the setup along with the description of the different elements. b Detail of the input. c Detail of the output section

into sealed holders and purged with N_2 to reduce water vapor absorption inside the waveguide (see Fig. 2a, b for the N_2 inlet, and Fig. 2a, c for the output holder).

3 Numerical modeling

We first review the eigenmodes supported by the PTFE-lined HMW to provide a basis for the analysis of the experimental results.

3.1 Transmission losses and field distribution inside the waveguide

In order to model the experiment accurately, we calculate the eigenmodes and the corresponding eigenvalues (dispersion diagram) of the PTFE-lined HMW numerically with the 2D eigenmode solver of CST Microwave StudioTM. The effective dispersive silver conductivity model and two sets of absorption data for PTFE are used (Fig. 3a). The first set represents tabulated dielectric properties of PTFE [22, 23]. In the second set, we assume that the imaginary values of the tabulated data are increased by a factor of 4. We note that such absorption above the nominal PTFE absorption is comparable to the absorption values reported for other polymers [30, 31]. A detailed description of the simulation can be found in [Appendix: Eigenmode numerical analysis](#).

The attenuation coefficient curves for the first four modes that are most likely to be excited under the on-center illumination in our experimental system are shown in Fig. 3b. Electric field profiles of these modes are shown in Fig. 4. At very low frequencies, the PTFE film is electrically negligible, and thus, the PTFE-lined HMW supports similar modes as a silver-only HMW [25, 32–34]. Hence, we denote the discussed modes in the case of the PTFE-lined HMW as TE_{11}^* , TM_{11}^* , TE_{12}^* , and TM_{12}^* .

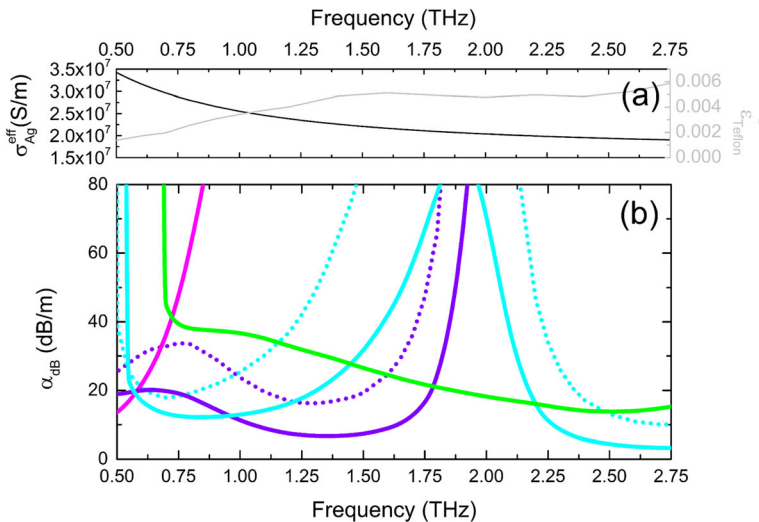


Fig. 3 **a** Material properties [the real part of the PTFE permittivity is $\epsilon=2.074$]. **b** Numerically computed attenuation for the fundamental modes: first (magenta), second (violet), third (cyan), and fourth (green); solid and dotted lines account for nominal PTFE according to tabulated data ϵ and the lossy PTFE with 4ϵ , respectively

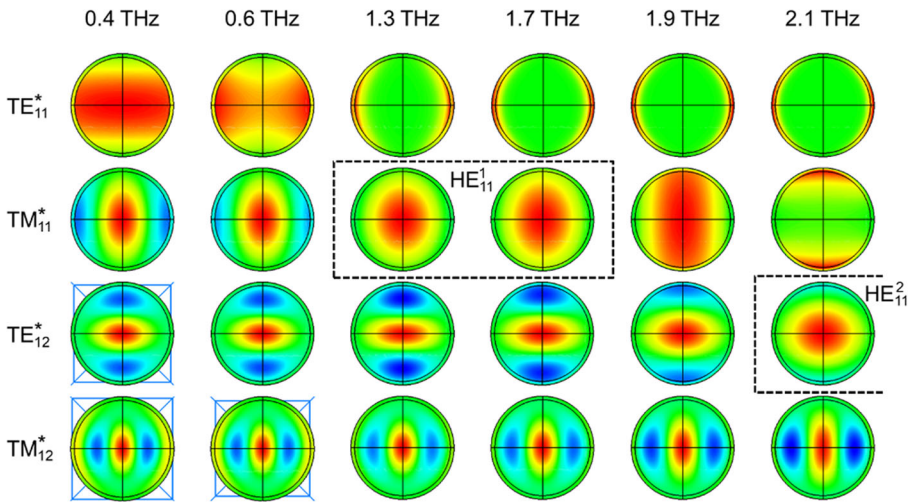


Fig. 4 $E_x(x,y)$ for the TE_{11}^* (first row), $TM_{11}^* \rightarrow HE_{11}^1$ (second row), $TE_{12}^* \rightarrow HE_{11}^2$ (third row), and TM_{12}^* mode (fourth row) at, from left to right, 0.4, 0.6, 1.3, 1.7, 1.9, and 2.1 THz. The external blue lines in the bottom left corner highlight that the mode is in cut-off for such frequency. The hybrid HE_{11} modes are explicitly underlined with dashed black lines

Attenuation of the TE_{11}^* mode, which has the lowest cut-off frequency mode (magenta line in Fig. 3b), increases drastically with frequency. Near its cut-off frequency, the mode profile is identical to the TE_{11} mode of the HMW. At high frequencies, the TE_{11}^* mode evolves into a field distribution highly localized in the PTFE layer (Fig. 4), resulting into a fast increase in its attenuation coefficient (Fig. 3b) [34]. Above 0.75 THz, the higher-order modes show significantly lower attenuation.

The second mode (TM_{11}^* , violet line in Fig. 3b) suffers some increase in attenuation within the lowest part of the spectral window. However, at ~ 0.75 THz there is an inflection point and the attenuation drops, despite the increase in material absorption (Fig. 3a). A transmission band is formed for this mode within 0.9–1.7 THz with the minimum attenuation of ~ 6.6 dB/m (~ 0.015 cm $^{-1}$). Within this band, waves travel as the HE_{11}^1 mode (Fig. 4), where the superscript denotes the order of the transmission band. The hybrid HE_{11}^1 mode has negligible field at the walls, and therefore the dielectric and conductive losses are minimized. We note that the other modes have significantly higher attenuation within this frequency range, i.e., self-filtering is expected. For $\nu > 1.7$ THz, the attenuation of this second mode suddenly rises as a result of field concentration in the top and bottom air-dielectric interface (Fig. 4).

The third mode (TE_{12}^* , cyan line in Fig 3b) has two distinct transmission bands: 0.6 THz $< \nu < 1.2$ THz and for $\nu > 2.2$ THz. The TE_{12}^* mode maintains the field distribution almost uniformly until the absorption band centered at ~ 1.9 THz. Hence, its attenuation coefficient does not show any sudden change at low frequencies. In the second band, the mode transforms into the HE_{11} -like mode (Fig. 4). To differentiate it from the lower-frequency HE_{11} mode, we will use the following notation: HE_{11}^2 .

Finally, the attenuation of the fourth mode (TM_{12}^* , green line in Fig. 3b) decreases gradually with frequency, displaying relatively low attenuation for $\nu > 2.2$ THz. The field distribution remains almost constant, which explains the gradual changes observed in its attenuation coefficient.

For both hybrid HE_{11} modes, the transmission bands become narrower and the attenuation increases when higher dielectric losses are considered in the modeling [4, 18]. Specifically, the HE_{11}^1 mode transmission band is limited between 1.0 and 1.6 THz with a minimum attenuation of ~ 16.2 dB/m (~ 0.037 cm $^{-1}$).

3.2 Impact of bending and metal model in transmission losses

We investigate robustness of the effective single-mode HE_{11}^1 propagation against bending by computing the total attenuation as a function of the bending radii with Lumerical MODE Solutions (further details can be found in Appendix: Eigenmode numerical analysis). Losses due to bending in the plane parallel to the polarization (xz) are shown in Fig. 5a, and in the plane perpendicular to the polarization (yz) in Fig. 5b for the HE_{11}^1 , TE_{12}^* , and TM_{12}^* modes. Although the total attenuation follows different trends for each mode, it is evident that the effective single-mode HE_{11}^1 propagation endures within the spectral window of interest (1.0–1.6 THz) for bending radii larger than 25 mm.

We estimate the effect of metallic losses within the transmission band numerically by considering four models for the metallic walls. The minimum loss value of 3.2 dB/m is found for perfect electric conductor, 5.3 dB/m for bulk silver ($\sigma_{Ag} = 6.3 \times 10^7$ S/m) and 6.6 and 7.0 dB/m for silver with surface roughness of 60 and 100 nm (RMS), respectively. These results indicate that surface roughness has a small effect on the overall transmission loss.

3.3 Dispersion: modal group delay

The numerically computed eigenvalues allow us to construct the expected modal group delay for the two sample lengths used in this study: 109 and 283 mm. These results are plotted in Figs. 6a and 7a, where the absorption band is clearly marked as a gray rectangular box.

By inspection of Figs. 6a and 7a, it is evident that the high-frequency HE_{11}^2 mode arrives earlier than the HE_{11}^1 mode. According to the numerically computed group delays, the hybrid HE_{11}^2 mode is the only mode present with the spectral components above 2.2 THz for $t < 5.5$ ps in the launch waveguide and for $t < 17.9$ ps in the 283 mm long waveguide. Within the intervals

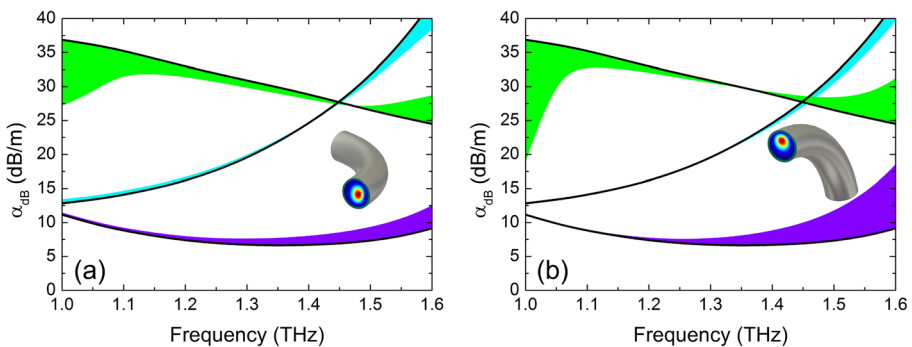


Fig. 5 Numerically computed attenuation for the second (violet), third (cyan), and fourth (green) modes for bending radii from infinite (i.e., straight waveguide) to 25 mm: **a** xz -plane of bending, and **b** yz plane of bending. To discern the evolution of the attenuation with the bending radii, the modal loss for the straight waveguide is shown by solid black lines. Insets in each panel show the bent waveguide along with the HE_{11} ($\nu = 1.3$ THz) mode profile for a bend radius of 25 mm

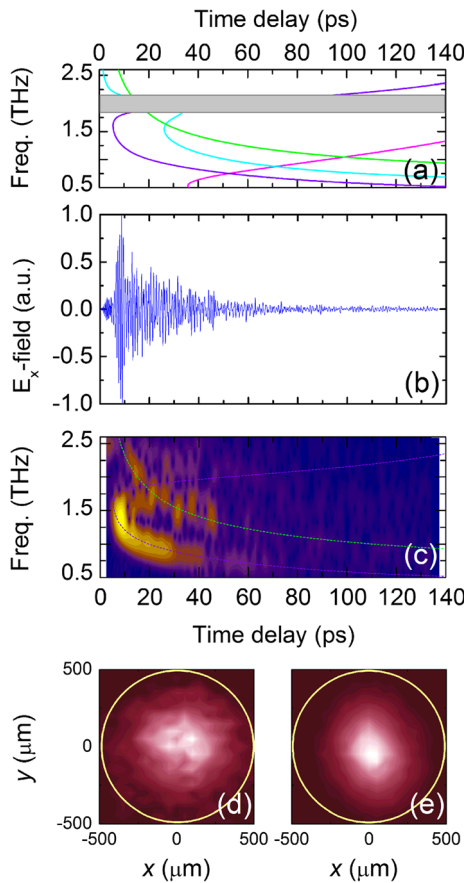


Fig. 6 **a** Numerically computed group delay for the TE_{11}^* (magenta), TM_{11}^* (violet), TE_{12}^* (cyan), and TM_{12}^* (green) modes in the launch waveguide. The gray rectangle represents the absorption band that defines the border between the HE_{11}^1 and the HE_{12}^2 mode band. **b** Waveform detected on the waveguide axis. **c** Power spectral density of the measured waveform shown right above **b**. The numerically computed group delay for the TM_{11}^* (dotted violet) and the TM_{12}^* modes (dotted green) are superimposed to facilitate the comparison. **d, e** Normalized near-field $|E_x|^2$ profiles at the waveguide output at 2.73 (**d**) and 8.73 ps (**e**). The yellow circle outlines the waveguide walls to guide the eye

5.5–10 ps and 18–27 ps for the two waveguides, respectively, the HE_{11}^1 mode is the only mode present. At later times, the TM_{12}^* mode (green line) with frequency components above 2 THz is also present. Since this TM mode has relative low loss at high frequencies, signs of multimode propagation may be expected experimentally in the waveforms for time delays beyond ~10 and ~27 ps for the two waveguides, respectively. In frequency domain, we then expect spectra relatively clear of mode interference peaks within the transmission band 1.0–1.6 THz. Although in principle multimode propagation is expected within this band, the large attenuation of the TE_{12}^* and TM_{12}^* modes results in quasi-single-mode (HE_{11}^1) propagation.

The comparison of the modal group delay for each length exposes an issue for the calculation of the transmission spectrum. For the longer waveguide, the higher-order TE_{12}^* mode (cyan line) arrives after the measured interval of 140 ps for $\nu < 1.0$ THz. The recorded waveform therefore is missing the frequency components from 0.75 to 1.0 THz for the 283-

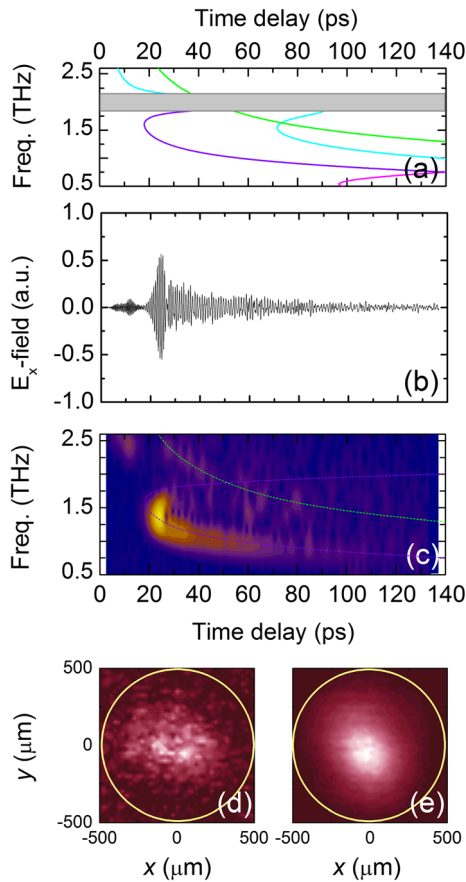


Fig. 7 **a** Numerically computed group delay for the TE_{11}^* (magenta), TM_{11}^* (violet), TE_{12}^* (cyan), and TM_{12}^* (green) modes in the 283 mm long waveguide. The gray rectangle represents the absorption band that defines the border between the HE_{11}^1 and the HE_{11}^2 mode band. **b** Waveform detected on the waveguide axis. **c** Power spectral density of the measured waveform shown right above **b**. The numerically computed group delay for the TM_{11}^* (dotted violet) and the TM_{12}^* modes (dotted green) are superimposed to facilitate the comparison. **d**, **e** Normalized near-field $|E_x|^2$ profiles at the waveguide output at 11.73 (**d**) and 24.6 ps (**e**). The yellow circle outlines the waveguide walls to guide the eye

mm-long waveguide. If the input terahertz beam is coupled initially to the TM_{11}^* mode and the TE_{12}^* mode, the calculation of the transmission spectrum overestimates losses within the 0.75–1.0 THz frequency span. Indeed, excitation of both modes is likely at low frequencies since both modes have similar overlap integrals with the Gaussian beam. A similar argument is applied to $\nu < 0.75$ THz, for the TE_{11}^* and TM_{12}^* modes. Therefore, for $\nu < 1.0$ THz, the experimentally measured losses can only provide an upper bound.

4 Near-field time-domain measurements and discussion

The output waveform and E -field xy -maps are measured for the launch waveguide followed by the same set of experiments for the 283-mm-long waveguide, which is constructed by

attaching an additional segment of 174 mm to the launch waveguide. This approach allows us to determine the transmission loss produced by the 174-mm segment.

The waveforms detected in the center of the waveguide output for the launch and joined samples are shown in Figs. 6b and 7b, respectively. Two pulses can be resolved in both waveforms. Using the modeling results, we could tentatively assign them to the HE_{11}^2 and HE_{11}^1 modes. Indeed, the intensity xy -map at the peaks of the leading and second transmitted pulses reveals HE_{11} mode profile for both pulses (Figs. 5d, e and 6d, e), confirming the assumption.

Signs of multimode interference are also noticeable for the second pulse. Namely, the coherent oscillations in the pulse are interrupted at ~ 10 and ~ 27 ps for the launch and 283-mm-long waveguide, respectively. This is also in agreement with the numerical results.

The mode interference can be observed in the spectrograms, i.e., time-frequency-maps, computed for each waveform (Figs. 6c and 7c). The waveform is divided into 28 Hamming-windowed segments with 90 % overlap. At earlier time delays, only the spectral component at around 2.4 THz, which is linked to the HE_{11}^2 mode, is observed. The strongest signal is at 1.1–1.6 THz in both spectrograms. The HE_{11}^1 mode is expected in this range. Low dispersion can be seen near the band center. The lack of signal around 1.9 THz is linked to the absorption band.

In both spectrograms, the HE_{11}^1 mode (violet line) forms a *tail* due to large dispersion for $\nu < 1.1$ THz, when it changes to the TM_{11}^* mode. The TM_{12}^* mode (green line) also yields another *tail* for $1.3 \text{ THz} < \nu < 2.5 \text{ THz}$. For the 283-mm-long waveguide, the trace associated to the TM_{12}^* mode is almost absent, suggesting that quasi-single HE_{11} mode propagation is obtained after 283 mm within the HE_{11}^1 transmission band.

The waveguide transmission spectrum is calculated by taking the ratio of the power spectra (Fig. 8a). Figure 8b presents the attenuation in decibels per meter, α_{dB} . A signal-to-noise ratio above 10 is achieved within a frequency span from 0.5 to 2.75 THz (spectral window highlighted by the orange box in Fig. 8a). This spectral region includes the fundamental transmission band, the absorption band and the low frequency part of the second transmission band [4, 5, 19, 32–34].

In the transmission band, $1.0 \text{ THz} < \nu < 1.6 \text{ THz}$, where the hybrid mode HE_{11} is fully developed, losses decrease to $\sim 17 \text{ dB/m}$ ($\sim 0.039 \text{ cm}^{-1}$) at approximately 1.3 THz. To put this value of attenuation in context, it is worth looking at commercial single-mode hollow waveguides. For instance, the rectangular waveguide WR-0.65 used by Virginia Diodes Inc. to cover the bandwidth 1.1–1.7 THz (similar to the transmission band here) has an estimated waveguide loss between 258 and 406 dB/m at the low and high end of the band, respectively [35], which is hundreds of decibels higher than our experimentally reported waveguide loss. The experimental spectrum is consistent with the prediction that the transmission loss is minimal for this waveguide at ~ 1 –2 THz. The spectrum quantitatively matches the transmission band from the simulation with dielectric absorption larger than the nominal used before (i.e., $4\epsilon_{\text{Teflon}}''$). The rapid oscillations in this band over the baseline are caused by multimode propagation involving the dominant HE_{11}^1 and the TM_{12}^* modes.

The more pronounced rapid oscillations observed for $\nu > 1.6$ THz in both waveform spectra (Fig. 8a) as well as in the transmission spectrum (Fig. 8b) suggest multimode propagation, but with a less defined dominant mode. In this range, the HE_{11} and TM_{12}^* modes travel with similar attenuation (see Fig. 8b), and thus, there is not a distinct dominant mode producing a clear baseline. This is in agreement with the spectrograms and the modeling.

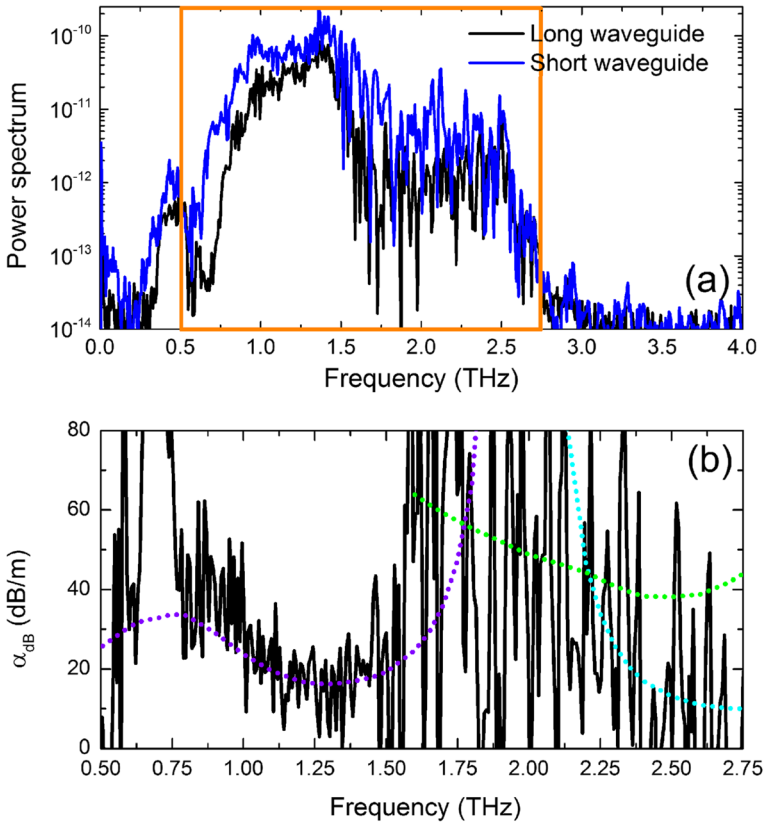


Fig. 8 **a** Power spectra for the launch (blue) and 283-mm-long waveguide (black); the orange rectangle highlights the spectral window represented in panel **b**. **b** Transmission loss measured by the cut-back experiment (black) together with the numerically computed attenuation for the fundamental $TM_{11}^* \rightarrow HE_{11}^1$ (violet), $TE_{12}^* \rightarrow HE_{11}^2$ (cyan), and TM_{12}^* modes (green) assuming the lossy PTFE with $4\epsilon''_{\text{PTFE}}$. Notice that the last two modes are only displayed within a specific range

5 Comparison with the literature

Different fabrication techniques have been used for dielectric-lined HMWs. For $\nu > 0.5$ THz, mandrel-wiring [5] and dynamic liquid phase deposition [20] can produce waveguides with reduced diameters required for suppressing higher-order modes and for waveguide flexibility. The reported characteristics of such waveguides are summarized in Table 1, and they will be discussed afterwards.

These two techniques, however, have not produced waveguides with $d < 3$ mm (Fig. 9). There is still a niche for fabrication dielectric-lined HWMs with radii above the $d/\lambda_0 = 4$ line, where they outperform metal-only waveguides of the same diameter. The results presented here show that the coating of polymer tubes gives access to such restricted area.

Table 1 shows the transmission loss of different terahertz-dielectric-lined HMWs reported in the literature that operate in the spectral window of interest for this paper together with our initial findings with PTFE for the lowest part of the terahertz-gap, i.e., 0.5 THz.

Table 1 Experimental loss of THz dielectric-lined hollow metallic waveguides

Material	Central Frequency (THz)	d/λ_0	α_{dB} (dB/m)	Ref.
Ag/PTFE	0.5	3.3	7	[19]
	1.3	4.3	17	This work
Ag/PS	1.4	18.7	1.8	[3]
Ag/PE	1.5	15.0	1.3	[5]
Ag/COP	1.7	17.0	1.5	[5]

The attenuation for our previous PTFE-lined HMW was lower than that reported here despite its smaller d/λ_0 . This is explained by the significantly lower absorption of PTFE (Fig. 3a) at $\nu < 1$ THz, the higher effective conductivity of Ag and the lower influence of the roughness.

HMWs coated with polystyrene (PS), polyethylene (PE), or cyclic olefin copolymer (COP) have shown very low attenuation when the d/λ_0 is larger than 15. Specifically, attenuations one order of magnitude lower than the attenuation here reported were measured. This is, in principle, expected given the rapid drop undergone by the attenuation with the diameter size [2, 3, 12, 18, 19]. Indeed, according to our estimations, experimental transmission loss below 2 dB is achievable for Ag/PTFE waveguides provided larger diameters are used. Nevertheless, given the exceptional low absorption of COP at terahertz frequencies, Ag/PTFE HMWs should not outperform Ag/COP HMWs in terms of transmission loss. However, the range of COP tubes with different diameter and size is not yet as extensive as PTFE tubes, which limit the flexibility of the fabrication approach presented.

6 Conclusion

We characterize for the first time PTFE-lined hollow metallic waveguides operating at 1.0–2.0 THz experimentally using near-field time-domain measurements and numerically using eigenmode calculations. We report effective quasi-single-mode propagation for the $1.0 < \nu < 1.6$ THz (i.e., HE_{11}^1 mode band) with a baseline transmission loss ~ 20 dB/m (~ 0.046 cm⁻¹) and the multimode propagation for $\nu > 1.6$ THz.

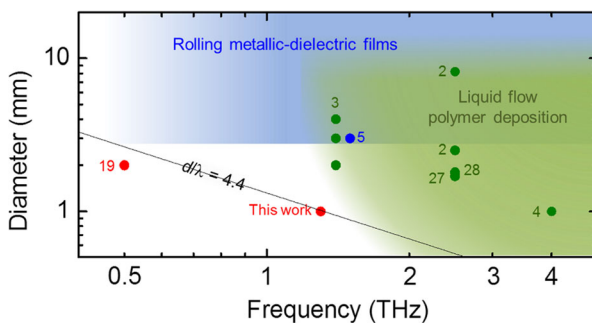


Fig. 9 Diameter-frequency map of the reported dielectric-lined HMWs categorized according to fabrication techniques: mandrel-wiring (blue), dynamic liquid phase (green), and coating of polymer tubes (red). The numbers indicate the references from which the data are taken

The fabrication approach employed here to produce a quasi-single-mode dielectric-lined hollow waveguide holds promise for the 1.0–2.0 THz range owing to its simplicity (coating commercially available tubes) and because the use of alternative fabrication techniques remains elusive. The proposed approach is universal and can be applied to any other polymer provided the suitable etching agent is used such that a silver film can be effectively deposited. Therefore, it is necessary to investigate other polymers with known lower absorption values in the region of interest such as COP.

Acknowledgments This work was supported in part by the Engineering and Physical Sciences Research Council (grant numbers EP/G033870/1 and EP/J017671/1), and the Royal Society (grant number UF080745). The work of M. Navarro-Cía was supported by Imperial College London through a Junior Research Fellowship.

Conflict of Interest The authors declare that they have no conflict of interest.

Appendix

Eigenmode numerical analysis

The transmission properties of the Ag-coated PTFE tube are modeled with CST Microwave StudioTM using a two-dimensional frequency-domain eigenmode analysis [4, 19, 25]. To simplify the calculation, the thickness of the silver film is considered semi-infinite (i.e., the background material outside the PTFE tube is silver). Given that the Ag film thickness is much larger than the skin depth within the spectral region of interest, this simplification does not have any effect in the waveguide modes. An effective dispersive conductivity calculated via the Hammerstad-Jensen approach that takes into account the roughness of the metal is used to model the background material silver. We assume that the roughness of the metal is equal to the measured average RMS roughness of the PTFE outer surface after the etching procedure, but before the deposition of the silver film: 60 nm. The simulated geometry consists then of a 38- μm -thick PTFE tube of 1 mm diameter loss-free air core. The dielectric property of the PTFE is based on tabulated experimental data [22, 23]. Four times higher dielectric losses are also studied to account for potential fabrication issues and to show the effect of this parameter in the loss spectrum. Given the twofold symmetry of the problem, a vertical electric and a horizontal magnetic mirror planes are applied to consider only a quarter of the waveguide cross-section. An adaptive tetrahedral discretization with maximum edge length of 10 μm within the PTFE tube is used to match accurately the circular cross-sectional area of the waveguide.

To study the attenuation due to bending, the commercial software Lumerical MODE Solutions is used in this case. The same material properties as for CST Microwave StudioTM (nominal PTFE and effective dispersive conductivity for RMS roughness 60 nm) are used. Twofold symmetry is no longer valid, and thus, only vertical electric or horizontal magnetic mirror planes are used for the yz - or xz -plane of bending case, respectively. A hexahedral mesh 1.3 $\mu\text{m} \times 1.3 \mu\text{m}$ is applied in this case. The additional bending loss between the straight waveguide and the waveguide with bending radius $R=50$ mm computed with the Lumerical MODE Solutions is added to the attenuation loss of the straight waveguide calculated with CST Microwave StudioTM to generate Fig. 5a, b.

Open Access This article is distributed under the terms of the Creative Commons Attribution 4.0 International License (<http://creativecommons.org/licenses/by/4.0/>), which permits unrestricted use, distribution, and reproduction in any medium, provided you give appropriate credit to the original author(s) and the source, provide a link to the Creative Commons license, and indicate if changes were made.

References

1. O. Mitrofanov, R. James, F. Aníbal Fernández, T. K. Mavrogordatos, J.A. Harrington, *IEEE Trans. THz Sci. Tech.* 1, 124 (2011)
2. B. Bowden, J. A. Harrington, O. Mitrofanov, *Appl. Phys. Lett.* 93, 181104-1-3 (2008)
3. P. Doradla, C. S. Joseph, J. Kumar, R. H. Giles, *Opt. Express* 20, 19176 (2012)
4. M. Navarro-Cía, M.S. Vitiello, C.M. Bledt, J.E. Melzer, J.A. Harrington, O. Mitrofanov, *Opt. Express* 21, 23748 (2013)
5. Y. Matsuura, E. Takeda, *J. Opt. Soc. Am. B* 25, 1949 (2008)
6. Y. Yang, M. Mandehgar, D. R. Grischkowsky, *IEEE Trans. THz Sci. Tech.* 2, 406 (2012)
7. R. Mendis, D. M. Mittleman, *Opt. Express* 17, 14839 (2009)
8. T.-I. Jeon, D. Grischkowsky, *Appl. Phys. Lett.* 88, 06113 (2006)
9. Y. Yang, M. Mandehgar, D. Grischkowsky, *IEEE T. THz Sci, Tech.* 1, 264 (2011)
10. S. E. Miller, A. C. Beck, *Proc. IRE* 41, 348 (1953)
11. A.A. Kostenko, A.I. Nosich, P. F. Goldsmith, in *History of Wireless*, ed. By T. K. Sarkar, R. Mailloux, A. A. Oliner, M. Salazar-Palma, D. L. Sengupta (Wiley, Hoboken, New Jersey, 2006), ch. 15, pp. 473–542
12. E.A.J. Marcatili, R.A. Schmelzter, *Bell Syst. Tech. J.* 43, 1783 (1964)
13. L. N. Vershinina, Y. N. Kasantsev, V. V. Meriakri, V. V. Shevchenko, in *1st European Microwave Conference*, London, UK, 1969, p 251
14. A.I. Goroshko, Y.M. Kuleshov, *Radiotekhnika* 21, 215 (1972)
15. J.W. Carlin, P. D'Agostino, *Bell Syst. Tech. J.* 52, 453 (1973)
16. J.W. Carlin, A. Maione, *Bell Syst. Tech. J.* 52, 487 (1973)
17. R. K. Nubling, J. A. Harrington, *Opt. Eng.* 37, 2454 (1998)
18. X.-L. Tang, Y.-W. Shi, Y. Matsuura, K. Iwai, M. Miyagi, *Opt. Lett.* 34, 2231 (2009)
19. J. E. Melzer, M. Navarro-Cía, O. Mitrofanov, J. A. Harrington, *Proc. SPIE* 8938, 89380I (2014)
20. J. A. Harrington, *Infrared fiber optics and their applications*, 1st edn. (SPIE, Bellingham, Washington, 2004)
21. R.J. Boyd, W.E. Cohen, W.P. Doran, R.D. Tuminaro, *The Bell Syst. Tech. J.* 56, 1873 (1997)
22. C. Winnerwisser, F. Lewen, H. Helm, *Appl. Phys. A* 66, 593 (1998)
23. J. Kawamura, S. Paine, and D.C. Papa, in *Proceedings of the Seventh International Symposium on Space Terahertz Technology*, (National Radio Astronomy Observatory, 1996), p. 349.
24. <http://www.zeusinc.com/>
25. M. Navarro-Cía, C. M. Bledt, M. S. Vitiello, H. E. Beere, D. A. Ritchie, J. A. Harrington, O. Mitrofanov, *J. Opt. Soc. Am. B* 30, 127 (2013)
26. R. Mueckstein, M. Navarro-Cía, O. Mitrofanov, *Appl. Phys. Lett.* 102, 141103 (2013)
27. O. Mitrofanov, T. Tan, P. R. Mark, B. Bowden, J. A. Harrington, *Appl. Phys. Lett.* 94, 171104 (2009)
28. O. Mitrofanov, J. A. Harrington, *Opt. Express* 18, 1898 (2010)
29. O. Mitrofanov, M. Lee, J.W.P. Hsu, I. Brener, R. Harel, J.F. Federici, J.D. Wynn, L.N. Pfeiffer, K. W. West, *IEEE J. Sel. Top. Quantum Elect.* 7, 600 (2001)
30. Y.-S. Jin, G.-J. Kim, S.-G. Jeon, *J. Korean Phys. Soc.* 49, 513 (2006)
31. P. D. Cunningham, N. N. Valdes, F. A. Vallejo, L. M. Hayden, B. Polishak, X.-H. Zhou, J. Luo, A. K.-Y. Jen, J. C. Williams, R. J. Twieg, *J. Appl. Phys.* 109, 043505 (2011)
32. Y. Kato, M. Miyagi, *IEEE Trans. Microw. Theor. Tech.* 40, 679 (1992)
33. M. Miyagi, S. Kawakami, *J. Lightwave Tech.* LT-2, 116 (1984)
34. Y. Kato, M. Miyagi, *IEEE Trans. Microw. Theor. Tech.* 42, 2336 (1994)
35. <http://vadiodes.com/VDI/pdf/waveguidechart200908.pdf>