

Differential roles for the adapters Gads and LAT in platelet activation by GPVI and CLEC-2.

Hughes, Craig; Auger, Jocelyn; McGlade, J; Eble, JA; Pearce, AC; Watson, Steve

DOI:

[10.1111/j.1538-7836.2008.03166.x](https://doi.org/10.1111/j.1538-7836.2008.03166.x)

Citation for published version (Harvard):

Hughes, C, Auger, J, McGlade, J, Eble, JA, Pearce, AC & Watson, S 2008, 'Differential roles for the adapters Gads and LAT in platelet activation by GPVI and CLEC-2.', *Journal of Thrombosis and Haemostasis*, vol. 6, no. 12, pp. 2152-9. <https://doi.org/10.1111/j.1538-7836.2008.03166.x>

[Link to publication on Research at Birmingham portal](#)

General rights

Unless a licence is specified above, all rights (including copyright and moral rights) in this document are retained by the authors and/or the copyright holders. The express permission of the copyright holder must be obtained for any use of this material other than for purposes permitted by law.

- Users may freely distribute the URL that is used to identify this publication.
- Users may download and/or print one copy of the publication from the University of Birmingham research portal for the purpose of private study or non-commercial research.
- User may use extracts from the document in line with the concept of 'fair dealing' under the Copyright, Designs and Patents Act 1988 (?)
- Users may not further distribute the material nor use it for the purposes of commercial gain.

Where a licence is displayed above, please note the terms and conditions of the licence govern your use of this document.

When citing, please reference the published version.

Take down policy

While the University of Birmingham exercises care and attention in making items available there are rare occasions when an item has been uploaded in error or has been deemed to be commercially or otherwise sensitive.

If you believe that this is the case for this document, please contact UBIRA@lists.bham.ac.uk providing details and we will remove access to the work immediately and investigate.

ORIGINAL ARTICLE

Differential roles for the adapters Gads and LAT in platelet activation by GPVI and CLEC-2

C. E. HUGHES,* J. M. AUGER,* J. McGLADE,† J. A. EBLE,‡ A. C. PEARCE*¹ and S. P. WATSON*

*Centre for Cardiovascular Sciences, Institute of Biomedical Research, Medical School, University of Birmingham, Birmingham, UK;

†Department of Medical Biophysics, Hospital for Sick Children, Toronto, ON, Canada; and ‡Center for Molecular Medicine,

Department of Vascular Matrix Biology, Frankfurt University Hospital, Frankfurt, Germany

To cite this article: Hughes CE, Auger JM, McGlade J, Eble JA, Pearce AC, Watson SP. Differential roles for the adapters Gads and LAT in platelet activation by GPVI and CLEC-2. *J Thromb Haemost* 2008; **6**: 2152–9.

Summary. *Background:* The adapter proteins SLP-76 and LAT have been shown to play critical roles in the activation of PLC γ 2 in platelets downstream of GPVI/FcR γ and the C-type lectin receptor CLEC-2. SLP-76 is constitutively associated with the adapter Gads in platelets, which also binds to tyrosine phosphorylated LAT, thereby providing a potential pathway of regulation of SLP-76. *Objective:* In the present study, we have compared the role of Gads alongside that of LAT following activation of the major platelet glycoprotein receptors using mice deficient in the two adapter proteins. *Results:* Gads was found to be required for the efficient onset of aggregation and secretion in response to submaximal stimulation of GPVI and CLEC-2, but to be dispensable for activation following stronger stimulation of the two receptors. Gads was also dispensable for spreading induced through integrin $\alpha_{IIb}\beta_3$ or the GPIb-IX-V complex. Further, Gads plays a negligible role in aggregate formation on collagen at an arteriolar rate of shear. In stark contrast, platelets deficient in the adapter LAT exhibit a marked decrease in aggregation and secretion following activation of GPVI and CLEC-2, and are unable to form stable aggregates on collagen at arteriolar shear. *Conclusions:* The results demonstrate that Gads plays a key role in linking the adapter LAT to SLP-76 in response to weak activation of GPVI and CLEC-2 whereas LAT is required for full activation over a wider range of agonist concentrations. These results reveal

the presence of a Gads-independent pathway of platelet activation downstream of LAT.

Keywords: CLEC-2, Gads, GPVI, LAT, platelet, signalosome, SLP-76.

Introduction

Immunoreceptor-tyrosine-based-activation motifs (ITAMs) are characterized by the presence of two YxxL/I motifs separated by 6–12 amino acids and are present on the cytosolic chains of a number of hematopoietic-specific immunoglobulin receptors, including Fc receptors, T- and B-cell antigen receptors (TCR and BCR), and the platelet collagen receptor complex, GPVI-FcR γ chain. This group of receptors signals through Src family kinase-dependent phosphorylation of the conserved tyrosines in the ITAM leading to recruitment of a Syk family kinase via its tandem SH2 domains, and stimulation of a downstream signaling cascade, which results in activation of phospholipase C (PLC) γ . A novel variation of this signaling pathway has been described in which the C-type lectin family receptors, CLEC-2, Dectin-1, and CLEC-9A, signal through sequential activation of Src and Syk family tyrosine kinases downstream of a single YxxL sequence [1–3].

Adapter proteins play a critical role in signaling by ITAMs and the ITAM-like receptors described above by forming a protein-scaffold that serves to recruit PLC γ to the membrane. This is illustrated by the role of the membrane adapter LAT and the two cytosolic adapters, Gads (Mona/Grp2/GrpL/Grf40) and SLP-76 in regulation of PLC γ 1 in T cells. Gads binds constitutively to SLP-76 and associates with LAT upon T-cell receptor (TCR) activation forming a LAT signalosome that is critical for activation of PLC γ 1 [4]. Mice deficient in LAT and SLP-76 have a complete inhibition of pre-TCR signaling, leading to an absence of circulating, mature T cells [5,6]. Similarly, there is a complete loss of activation of PLC γ 1 by the TCR in LAT-deficient or SLP-76-deficient Jurkat cells [7,8]. In contrast, there is a limited degree of signaling by the pre-TCR in the absence of Gads, resulting in a reduced number of mature T cells [9]. Furthermore, disruption of the interaction

Correspondence: Craig E. Hughes, Centre for Cardiovascular Sciences, Institute of Biomedical Research, Medical School, University of Birmingham, Birmingham B15 2TT, UK.

Tel.: +44 121 415 8678; fax: +44 121 415 8817.

E-mail: c.e.hughes@bham.ac.uk

¹Present address: Novartis Horsham Research Centre, Discovery Biology, Wimblehurst Road, Horsham, West Sussex RH12 5AB, UK.

Re-use of this article is permitted in accordance with the Creative Commons Deed, Attribution 2.5, which does not permit commercial exploitation.

Received 24 June 2008, accepted 25 August 2008

between SLP-76 and Gads has been shown to impair TCR signaling in Jurkat cells by approximately 50% [10,11]. Thus, there is an absolute requirement for LAT and SLP-76 in the activation of PLC γ 1 by the TCR, whereas the role for Gads can be partially bypassed.

The LAT signalosome plays an important role in the activation of platelets by the platelet collagen receptor GPVI and the C-type lectin receptor, CLEC-2. However, in contrast to signaling through the TCR, a limited degree of activation of PLC γ 2 is induced by both receptors in platelets deficient in LAT [2,12]. Furthermore, CLEC-2 is able to induce a partial activation of PLC γ 2 in the absence of SLP-76, whereas this adapter is critical for the activation of the phospholipase by GPVI [2,13]. Thus, there are important differences in the roles of LAT and SLP-76 in signaling between GPVI and CLEC-2 in platelets, and also with the TCR. Interestingly, SLP-76 is required for activation of PLC γ 2 downstream of two other major platelet glycoprotein receptors, integrin $\alpha_{IIb}\beta_3$ and GPIb-IX-V [14–16]. However, in both cases, it is controversial as to whether this is mediated downstream of an ITAM-containing protein.

Very little is known about the role of Gads in platelets. Gads associates with SLP-76 in platelets and undergoes tyrosine phosphorylation upon stimulation of GPVI by the synthetic collagen, CRP [17]. In the only functional study using Gads-deficient platelets, Judd *et al.* [15] reported that Gads is dispensable for α -granule secretion in platelets induced by a high concentration of GPVI-specific agonist, convulxin, whereas LAT is essential for this response. In contrast, the same research group has shown that mutation of the Gads binding site on SLP-76 impairs GPVI-induced platelet secretion [18]. To definitively characterize the role of Gads in platelets, we have carried out an extensive investigation of Gads-deficient platelets following activation by GPVI, CLEC-2, integrin $\alpha_{IIb}\beta_3$, and GPIb-IX-V.

Experimental procedures

Animals

Genetically modified mice deficient in Gads [9] and LAT [5] were bred as heterozygotes to generate knockouts and littermate controls. LAT-deficient mice were bred on a C57Bl6J background. Gads-deficient mice were bred on a Balb-c background or backcrossed for seven generations onto a C57Bl6J background.

Reagents

Rhodocytin was purified from *Calloselasma rhodostoma* venom as previously described [19]. The α -phosphotyrosine mAb 4G10, α -SLP-76 pAb, α -Gads pAb, and α -LAT pAb were from Upstate Biotechnology Inc. (TCS Biologicals Ltd, Bucks, UK). The α -Grb2 pAb was from Santa Cruz Biotechnology (Heidelberg, Germany). All other reagents were from previously described sources [20–23].

Platelet preparation

Venous blood from healthy drug-free volunteers was taken into 10% sodium citrate. Mouse blood was drawn from CO $_2$ asphyxiated mice following isoflurane anesthesia by portal vein puncture and taken into 100 μ L of acid citrate dextrose. Washed human and mouse platelets were obtained by centrifugation using prostacyclin to prevent activation during the isolation procedure [24]. Both sets of washed platelets were resuspended in modified Tyrodes buffer as previously described [24]. Platelets were used at a cell density of 2×10^8 mL $^{-1}$ for aggregometry, 5×10^8 mL $^{-1}$ for biochemical studies and 2×10^7 mL $^{-1}$ for spreading assays.

Platelet aggregation and adenosine triphosphate secretion

Aggregation was monitored by light transmission using a Born lumi-aggregometer (Chronolog, Havertown, PA, USA). Adenosine triphosphate (ATP) secretion was measured by the addition of a luciferin/luciferase substrate/enzyme mix (Chronolume) [24,25].

Flow adhesion studies

Mouse blood was drawn into sodium heparin (10 U mL $^{-1}$) and PPACK (40 μ M). Glass capillary tubes (Camlab, Cambridge, UK) were coated in the presence of 100 μ g mL $^{-1}$ Horm collagen (Nycomed, Munich, Germany) for 1 h at room temperature. The capillaries were washed and blocked with phosphate buffered saline (PBS) containing 5 mg mL $^{-1}$ of heat-inactivated bovine serum albumin (BSA) for 1 h at room temperature before being mounted on the stage of an inverted microscope (DM IRB; Leica). Anticoagulated whole blood was pre-incubated with 2 μ M DiOC $_6$ for 15 min at 37 $^{\circ}$ C to fluorescently label the cells. It was then perfused through the chamber for 4 min at a wall shear rate of 1000 s $^{-1}$ at 37 $^{\circ}$ C, followed by washing for 3 min at the same shear rate with modified Tyrodes buffer whilst fluorescent images were captured. Adherent cells were then fixed with 3.7% paraformaldehyde for 30 min and imaged using differential interference contrast (DIC) microscopy on a Zeiss Axiovert 200 M microscope (Carl Zeiss Ltd, Welwyn Garden City, UK).

Immunoprecipitation and Western blotting

Washed platelets were pre-treated with 1 mM EGTA, 10 μ M indomethacin and 2 U mL $^{-1}$ apyrase to inhibit platelet aggregation, thromboxane A $_2$ (TxA $_2$) production and to block adenosine 5'-diphosphate (ADP), respectively. Platelets were stimulated with agonists at 37 $^{\circ}$ C with stirring at 1200 r.p.m. in a Born lumi-aggregometer. Reactions were terminated by addition of 2 \times ice-cold NP-40 lysis buffer. Platelet lysates were pre-cleared and detergent insoluble debris was discarded [24]. A small aliquot was dissolved with sodium dodecyl sulfate (SDS) sample buffer for detection of total tyrosine phosphorylation. Antibodies against PLC γ 2, Syk, SLP-76, LAT, Gads, Grb2 or

an isotype control were added to the resultant supernatant and incubated overnight. The proteins were immunoprecipitated by addition of protein A-Sepharose or protein G-Sepharose beads. Precipitated proteins or whole-cell lysates were separated by SDS-polyacrylamide gel electrophoresis, electrotransferred, and Western blotted by the indicated antibodies.

Platelet spreading assay

Coverslips were coated with matrix proteins as previously reported [26]. Platelets were spread on collagen for 45 min at 37 °C in the presence of apyrase (2 U mL⁻¹) and indomethacin (10 µM) before washing with PBS followed by fixation with paraformaldehyde (3.7%). Platelets were imaged by DIC microscopy on a Zeiss Axiovert 200 M microscope. Platelet surface area was analyzed using ImageJ (NIH, Bethesda, USA) [26].

Results

Gads is required for rapid onset of aggregation and secretion by low concentrations of CRP

A role for Gads and LAT in supporting platelet aggregation was investigated using knockout mice. The GPVI receptor agonist, CRP, stimulated concentration-dependent aggregation, with a threshold at 0.1 µg mL⁻¹ and a maximal response at 1 µg mL⁻¹ (not shown). In the absence of LAT, the dose-response curve was moved approximately tenfold to the right, such that a concentration of 10 µg mL⁻¹ of CRP was required to induce full aggregation, although it was notable that this response was delayed in onset (Fig. 1A). In contrast, the dose-response curve for aggregation to CRP was only slightly right-shifted in the absence of Gads, although there was a clear delay in the onset of response to lower concentrations of the synthetic collagen. Similar observations were observed on Gads^{-/-} mice bred on a Balb/c background or on a C57Bl6J background (not shown). In comparison, aggregation induced by a low concentration of the G protein-coupled receptor agonist thrombin (0.03 U mL⁻¹) was not significantly different in the absence of LAT or Gads (Fig. 1B).

We investigated the ability of the CLEC-2 receptor agonist, rhodocytin, to stimulate aggregation in the absence of Gads and LAT. We observed a delay and a reduction in aggregation to low concentrations of rhodocytin (1–3 nM) in the absence of Gads, although this effect was not seen with higher concentrations of the snake toxin (Fig. 1C). Similar results were observed on Gads^{-/-} mice bred on a Balb/c or C57Bl6J background (not shown). In contrast, we observed a much greater reduction in response to rhodocytin (3 nM) in LAT-deficient platelets, which could be overcome by a higher concentration (30 nM), although a small delay in aggregation could still be observed.

To investigate a role for Gads in dense granule secretion, we monitored release of ATP using luciferin–luciferase. This revealed a marked delay in the onset of secretion to CRP

(0.3–1 µg mL⁻¹) in the absence of Gads, although full recovery of response was seen over time (Fig. 1D). A similar pattern of inhibition was observed for expression of the α-granule marker, P-selectin (not shown). In comparison, secretion of ATP induced by CRP (1 µg mL⁻¹) was abolished in LAT-deficient platelets, and markedly delayed at the higher concentration of 3 µg mL⁻¹. There was also a reduction and delay in ATP secretion induced by a low concentration of rhodocytin (1 nM) in Gads-deficient platelets, although near full recovery was seen at a higher concentration (Fig. 1E). In comparison, the response to 3 nM rhodocytin was abolished in the absence of LAT, with partial recovery observed in response to a higher concentration (30 nM). The responses to low concentrations of thrombin were not altered in the absence of Gads or LAT (Fig. 1F).

Thus, the above observations demonstrate that Gads plays a relatively minor role in mediating platelet activation by GPVI and CLEC-2 in contrast to the greater role of LAT.

Spreading of Gads-deficient platelets on other matrix proteins

The above studies were extended to investigate the role of Gads and LAT in spreading of platelets on fibrinogen and von Willebrand factor (VWF)/botrocetin, which is mediated through activation of Syk downstream of integrin α_{IIb}β₃ and GPIIb-IX-V, respectively [26,27]. Platelets that have been allowed to spread on fibrinogen form filopodia and limited lamellipodia, whereas platelets spread on VWF/botrocetin form filopodia only. As shown in Fig. 2, there was no significant difference in the surface area or morphology of control and Gads^{-/-} and LAT^{-/-} platelets that had been allowed to spread on fibrinogen or VWF/botrocetin.

Platelet aggregation on collagen at arteriolar rates of flow

Studies were designed to monitor platelet aggregation on collagen at an arteriolar rate of flow in platelets deficient in Gads or LAT. There was no detectable difference in the time course or magnitude of platelet aggregation on collagen in the absence of Gads relative to control platelets (Fig. 3). In comparison, LAT^{-/-} platelets formed a monolayer on collagen but were unable to form platelet aggregates. This can be explained by the limited degree of platelet activation giving rise to stable adhesion, whereas secretion is required for subsequent recruitment and activation of platelets.

Measurement of protein tyrosine phosphorylation in Gads-deficient platelets

The above results reveal a minor role for Gads in supporting platelet aggregation and secretion downstream of GPVI and CLEC-2. To investigate the molecular basis of this, we measured tyrosine phosphorylation of the key signaling proteins, Syk, SLP-76, and PLCγ2. There was a small but consistent reduction in tyrosine phosphorylation of Syk, SLP-76, and PLCγ2 induced by CRP in the absence of Gads

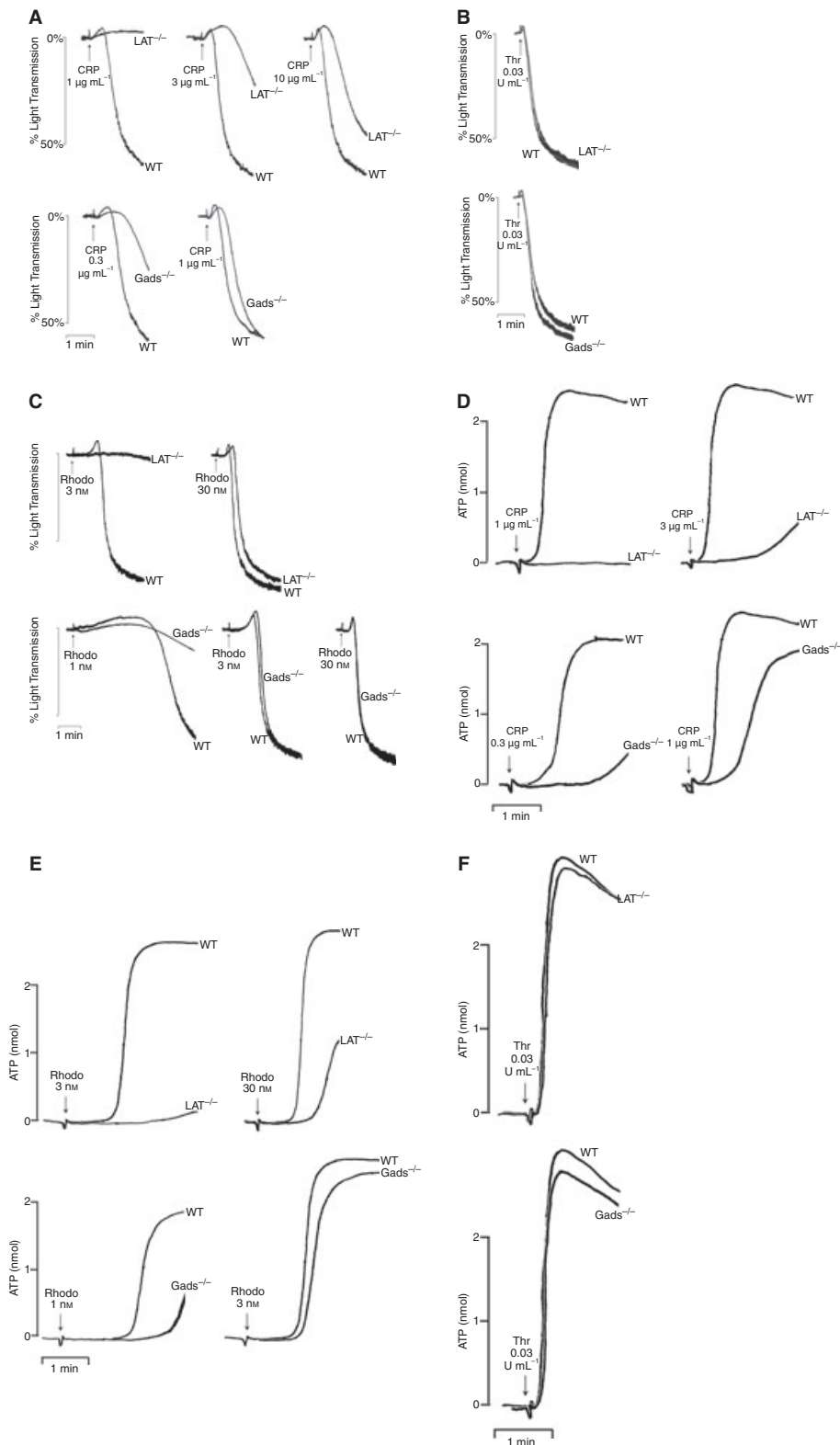


Fig. 1. Gads is required for rapid onset of aggregation and secretion by low concentrations of CRP and rhodocytin. Washed mouse platelets ($2 \times 10^8 \text{ mL}^{-1}$) were stimulated in an aggregometer with CRP (A), thrombin (B) or rhodocytin (C) and allowed to aggregate. Percentage light transmission was calculated. Washed mouse platelets ($2 \times 10^8 \text{ mL}^{-1}$) were stimulated in an aggregometer with CRP (D), rhodocytin (E) or thrombin (F) and allowed to aggregate for 2 min. Adenosine triphosphate secretion was measured using light emission from luciferin/luciferase. Results are representative of between three and eight experiments.

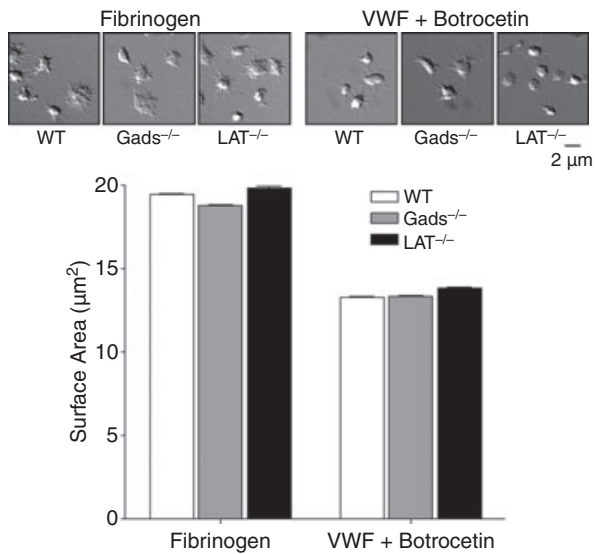


Fig. 2. Spreading of Gads-deficient and LAT-deficient platelets to other matrix proteins. Washed mouse platelets ($2 \times 10^7 \text{ mL}^{-1}$) were allowed to spread on fibrinogen or botrocetin treated von Willebrand factor coated cover-slips for 45 min at 37 °C. Non-adherent platelets were subsequently washed away and adherent platelets were fixed and imaged by differential interference contrast (DIC) microscopy. Surface area of adherent platelets was calculated using ImageJ software. The results are representative of five fields of view from three mice \pm 95% confidence interval. Statistical significance was calculated using a Student's *t*-test.

(Fig. 4A), consistent with a supporting role for Gads in mediating activation of PLC γ 2. In comparison, there was a marked inhibition of phosphorylation of all three proteins in the absence of LAT in response to CRP, as previously reported [12]. There was also a minor reduction in phosphorylation of SLP-76 and PLC γ 2 in Gads^{-/-} platelets in response to rhodocytin, although phosphorylation of Syk was not altered

(Fig. 4B). Phosphorylation of all three proteins induced by rhodocytin was inhibited in the absence of LAT. These results are in line with those for aggregation and secretion, with minor and major roles for Gads and LAT, respectively, in regulating phosphorylation of PLC γ 2 downstream of GPVI and CLEC-2.

Immunoprecipitation of Gads and Grb2

The relatively minor role of Gads in mediating platelet activation by CRP and rhodocytin raises the issue of whether there is a Gads-related protein that supports platelet activation downstream of GPVI and CLEC-2 through binding to LAT. Gads belongs to a family of three adapters, but only one other of these is expressed in platelets, namely Grb2, which is also known to bind to LAT [28]. To compare the roles of Gads and Grb2, both proteins were immunoprecipitated from basal and CRP-stimulated platelets and samples analyzed for protein tyrosine phosphorylation (Fig. 5). Tyrosine phosphorylated bands of 38 and 76 kDa, which co-migrate with LAT and SLP-76, respectively, were observed to immunoprecipitate with Gads, along with a band of 45 kDa that was detected after 90 s, and which co-migrates with a band that has previously been identified as Gads [17]. Two further, unidentified tyrosine phosphorylated bands of 60 and 150 kDa were also present. In comparison, a major tyrosine phosphorylated band of 38 kDa that co-migrates with LAT is observed in the Grb2 immunoprecipitates, along with a weakly tyrosine phosphorylated band of 76 kDa that co-migrates with SLP-76. There is also a prominent tyrosine phosphorylated band of 125 kDa that has not been identified. Confirmation that the 38 and 76 kDa bands correspond to LAT and SLP-76 was achieved by immunoprecipitation of both proteins and Western blotting (not shown).

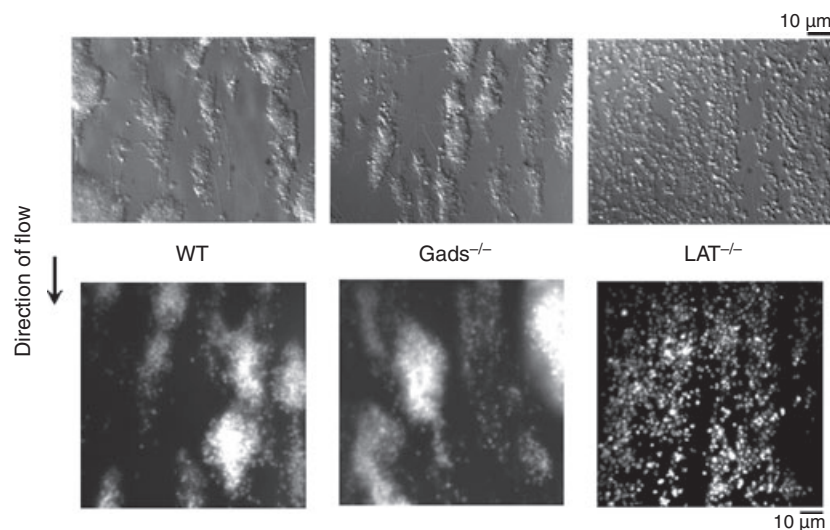


Fig. 3. Adhesion of Gads-deficient platelets on collagen under flow conditions. Heparinized whole mouse blood was passed through collagen-coated glass capillaries at an intermediate shear rate of 1000 s^{-1} . Platelets were fixed and subsequently imaged by differential interference contrast (DIC) microscopy (upper). Platelets were labeled fluorescently with DiOC₆ and imaged with a fluorescent microscope (lower). Results are representative of five experiments.

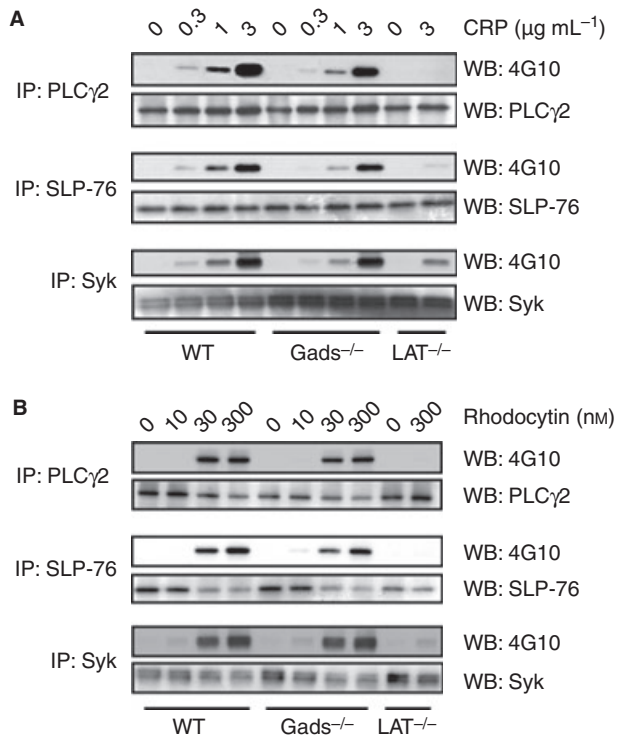


Fig. 4. Measurement of protein tyrosine phosphorylation in Gads-deficient platelets. Washed mouse platelets ($5 \times 10^8 \text{ mL}^{-1}$) were stimulated with CRP for 60 s (A) or rhodocytin for 120 s (B) and subsequently lysed with NP-40 detergent. PLC γ 2, SLP-76, and Syk were immunoprecipitated using pAbs and proteins were separated by reducing sodium dodecyl sulfate polyacrylamide gel electrophoresis (10%) and transferred to polyvinylidene fluoride membrane. The membrane was probed with an anti-pTyr mAb, and re-probed with PLC γ 2, SLP-76 or Syk pAbs. Results are representative of between four and six experiments.

Discussion

The present study was undertaken with the primary goal of comparing the roles of Gads and LAT in the regulation of PLC γ 2 by platelet glycoprotein receptors, with particular emphasis on the collagen receptor GPVI and the C-type lectin receptor CLEC-2. In agreement with previous studies, LAT was demonstrated to be critical for GPVI-mediated aggregation and secretion, with only high concentrations of CRP inducing aggregation in the LAT $^{-/-}$ mice. Further, LAT $^{-/-}$ platelets form a monolayer but are unable to aggregate when flowed over collagen at an arteriolar rate of flow, consistent with the critical role for dense granule secretion in mediating aggregate development [29,30]. LAT is also critical for secretion and aggregation induced by low concentrations of the CLEC-2 ligand rhodocytin, whereas recovery is seen at higher concentrations. However, LAT does not play a role in signaling by integrin $\alpha_{\text{IIb}}\beta_3$ or GPIb-IX-V. In comparison, Gads has a minor role in mediating platelet activation by GPVI and CLEC-2, as illustrated by the delay in onset and reduction in aggregation and secretion following activation by low but not high concentrations of CRP and rhodocytin, respectively. Further, Gads does not mediate spreading by integrin $\alpha_{\text{IIb}}\beta_3$ and GPIb-IX-V, although this is not surprising, given the lack

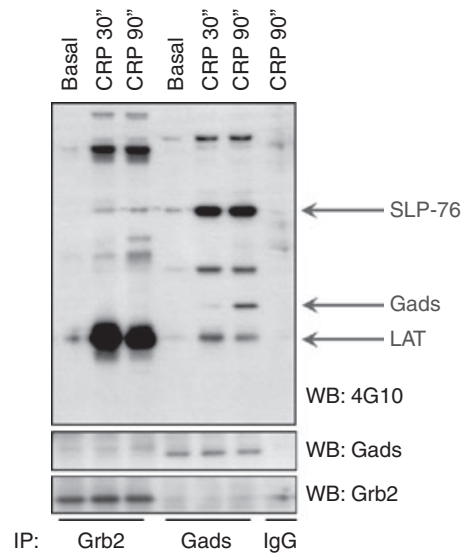


Fig. 5. Gads associates with LAT and SLP-76 in platelets. Washed platelets ($5 \times 10^8 \text{ mL}^{-1}$) were stimulated with $10 \mu\text{g mL}^{-1}$ CRP for 30 and 90 s and subsequently lysed with NP-40 detergent. Gads and Grb2 were immunoprecipitated using pAbs and proteins were separated by reducing sodium dodecyl sulfate polyacrylamide gel electrophoresis (4–12%) and transferred to polyvinylidene fluoride membrane. The membrane was probed with an anti-pTyr mAb, and re-probed with the Gads and Grb2 pAbs. Results are representative of five experiments.

of a role for LAT in this event. Thus, these results illustrate a differential role for LAT and Gads in supporting platelet activation by GPVI and CLEC-2, whereas neither plays a role in mediating spreading induced by integrin $\alpha_{\text{IIb}}\beta_3$ and GPIb-IX-V.

The minor role for Gads in supporting GPVI signaling in platelets is in line with its more limited role in TCR signaling relative to that of LAT and SLP-76. For example, mice deficient in Gads have a marked reduction in mature T cells [9] as a consequence of inhibited pre-TCR signaling, whereas mice deficient in LAT and SLP-76 have no circulating T cells. Further, mutation of the site of interaction of Gads with LAT reduces signaling through the T-cell receptor by approximately 50% [28] in contrast to the full inhibition of T-cell signaling that is observed in the absence of LAT and SLP-76 [7,8]. Thus, Gads plays a relatively minor role in both platelets and T cells in comparison with that of LAT and SLP-76, and its major function may be to facilitate the interaction of the two adapter proteins in response to low, threshold levels of receptor stimulation. In theory, the breeding of mice that are deficient in both Gads and LAT is required to confirm a role for Gads in the regulation of LAT in that a similar level of inhibition should be seen in mice platelets deficient in LAT to those deficient in LAT and Gads. However, the relatively small phenotype observed in the absence of Gads would render it difficult to obtain an unequivocal answer on this.

Platelets express the Gads-related adapter, Grb2, which also binds to LAT and SLP-76. This raises the possibility that a role for Gads could be masked by the presence of Grb2, especially in light of studies in a DT40 cell model reporting that Gads and

Grb2 are both able to couple LAT and SLP-76, albeit that Gads does this more efficiently [31]. Indeed, this is consistent with the present result, which demonstrates that Grb2 associates strongly with LAT but only weakly with SLP-76, whereas Gads is constitutively associated with SLP-76 (not shown). The strong binding of Grb2 to LAT is explained by the presence of three sites for association of Grb2 with LAT at phosphotyrosines Y171, Y191, and Y226 [28,32,33], compared with a single site for Gads at phosphotyrosine Y191, and to a lesser extent Y171 [28,32,33]. However, the increased binding of Gads to SLP-76 is explained by the very high affinity of the association between the C-terminal SH3 domain of Gads and a RxxK motif on SLP-76 of 3 nM [34,35]. This is an atypical interaction, as the majority of SH3 domains bind to proline rich sequences with micromolar affinity, including the C-terminal SH3 domain of Grb2, which binds to a proline rich region in SLP-76 with an affinity of 3 μ M [34].

Overall, the present observations and previous data emphasize that SLP-76 and LAT are the key adapters in bringing PLC γ 2 to the membrane, with SLP-76 being essential for tyrosine phosphorylation and activation of the phospholipase. In the absence of LAT, a limited degree of tyrosine phosphorylation activation of PLC γ occurs, which is sufficient to enable recovery of aggregation to high concentrations of CRP in the absence of shear. However, platelet aggregation on collagen at arteriolar shear is abolished in the absence of LAT (present results) resulting in increased tail-bleeding and impaired thrombus formation *in vivo* [36]. Interestingly, a reduction in tyrosine phosphorylation of Syk was also observed in the absence of LAT in platelets stimulated by CRP and rhodocytin. This reduction is most likely due to increased accessibility of tyrosine residues in Syk to protein tyrosine phosphatases in the absence of LAT. In addition, however, we have also identified a novel positive feedback role for Syk in mediating its own phosphorylation in rhodocytin-stimulated platelets, which also contributes to this reduction in phosphorylation (Spalton JC, Watson SP, unpublished).

In comparison to LAT and SLP-76, Gads has a relatively minor role in recruiting SLP-76 to LAT and activation of PLC γ 2, and does not contribute to platelet aggregation at arteriolar shear. Indeed, it may be that the evolution of a role for Gads in mediating the interaction between LAT and SLP-76 has occurred because of its role in facilitating weak signaling by the pre-TCR to ensure an optimal number of mature T cells in the circulation rather than to facilitate TCR or platelet activation at higher agonist concentrations. Consistent with this theory, Gads can be bypassed in an active PLC γ signalosome as PLC γ can be recruited to LAT through a direct interaction between LAT Y132 and its N-terminal SH2 domain [37–39].

The differing dependency on LAT and SLP-76 in the GPVI and CLEC-2 signaling cascades could reflect either the presence of a LAT-like molecule in platelets or the presence of a LAT-independent pathway of recruitment of SLP-76 to the membrane. The present study does not distinguish between these two possibilities. However, in a related line of work in the laboratory,

we have been unable to find evidence for a functional role of the known LAT-like adapters in mediating platelet activation by GPVI (Pearce AC, Schraven B, Hughes CE, Watson SP, unpublished data). Thus, we favor a model in which SLP-76 and PLC γ 2 are able to interact at the membrane independent of a LAT-like membrane adapter protein, with Gads and LAT having evolved to increase the magnitude of signaling. Thus, the mechanism of activation of LAT-deficient platelets by GPVI and CLEC-2 may be similar to that used by integrin $\alpha_{IIb}\beta_3$ and GPIb-IX-V, which induce relatively weak activation through LAT-independent, SLP-76-dependent activation of PLC γ 2.

In conclusion, the present study has demonstrated that the adapter Gads plays a minor role in mediating platelet activation by GPVI and CLEC-2, emphasizing an alternate pathway through which LAT and SLP-76 regulate PLC γ 2.

Acknowledgement

We would like to thank M. Tomlinson for critical evaluation of the manuscript.

Disclosure of Conflict of Interests

The authors state that they have no conflict of interest.

References

- Fuller GL, Williams JA, Tomlinson MG, Eble JA, Hanna SL, Pohlmann S, Suzuki-Inoue K, Ozaki Y, Watson SP, Pearce AC. The C-type lectin receptors CLEC-2 and Dectin-1, but not DC-SIGN, signal via a novel YXXL-dependent signaling cascade. *J Biol Chem* 2007; **282**: 12397–409.
- Suzuki-Inoue K, Fuller GL, Garcia A, Eble JA, Pohlmann S, Inoue O, Gartner TK, Hughan SC, Pearce AC, Laing GD, Theakston RD, Schweighoffer E, Zitzmann N, Morita T, Tybulewicz VL, Ozaki Y, Watson SP. A novel Syk-dependent mechanism of platelet activation by the C-type lectin receptor CLEC-2. *Blood* 2006; **107**: 542–9.
- Huysamen C, Willment JA, Dennehy KM, Brown GD. CLEC9A is a novel activation C-type lectin-like receptor expressed on BDCA3 + dendritic cells and a subset of monocytes. *J Biol Chem* 2008; **283**: 16693–701.
- Tomlinson MG, Lin J, Weiss A. Lymphocytes with a complex: adapter proteins in antigen receptor signaling. *Immunol Today* 2000; **21**: 584–91.
- Zhang W, Sommers CL, Burshtyn DN, Stebbins CC, DeJarnette JB, Tribble RP, Grinberg A, Tsay HC, Jacobs HM, Kessler CM, Long EO, Love PE, Samelson LE. Essential role of LAT in T cell development. *Immunity* 1999; **10**: 323–32.
- Clements JL, Yang B, Ross-Barta SE, Eliason SL, Hrstka RF, Williamson RA, Koretzky GA. Requirement for the leukocyte-specific adapter protein SLP-76 for normal T cell development. *Science* 1998; **281**: 416–9.
- Finco TS, Kadlecsek T, Zhang W, Samelson LE, Weiss A. LAT is required for TCR-mediated activation of PLC γ 1 and the Ras pathway. *Immunity* 1998; **9**: 617–26.
- Yablonski D, Kuhne MR, Kadlecsek T, Weiss A. Uncoupling of nonreceptor tyrosine kinases from PLC- γ 1 in an SLP-76-deficient T cell. *Science* 1998; **281**: 413–6.
- Yoder J, Pham C, Iizuka YM, Kanagawa O, Liu SK, McGlade J, Cheng AM. Requirement for the SLP-76 adaptor GADS in T cell development. *Science* 2001; **291**: 1987–91.

- 10 Yablonski D, Kadlec T, Weiss A. Identification of a phospholipase C-gamma1 (PLC-gamma1) SH3 domain-binding site in SLP-76 required for T-cell receptor-mediated activation of PLC-gamma1 and NFAT. *Mol Cell Biol* 2001; **21**: 4208–18.
- 11 Jordan MS, Maltzman JS, Kliche S, Shabason J, Smith JE, Obstfeld A, Schraven B, Koretzky GA. *In vivo* disruption of T cell development by expression of a dominant-negative polypeptide designed to abolish the SLP-76/Gads interaction. *Eur J Immunol* 2007; **37**: 2961–72.
- 12 Pasquet JM, Gross B, Quek L, Asazuma N, Zhang W, Sommers CL, Schweighoffer E, Tybulewicz V, Judd B, Lee JR, Koretzky G, Love PE, Samelson LE, Watson SP. LAT is required for tyrosine phosphorylation of phospholipase cgamma2 and platelet activation by the collagen receptor GPVI. *Mol Cell Biol* 1999; **19**: 8326–34.
- 13 Clements JL, Lee JR, Gross B, Yang B, Olson JD, Sandra A, Watson SP, Lentz SR, Koretzky GA. Fetal hemorrhage and platelet dysfunction in SLP-76-deficient mice. *J Clin Invest* 1999; **103**: 19–25.
- 14 Judd BA, Myung PS, Leng L, Obergfell A, Pear WS, Shattil SJ, Koretzky GA. Hematopoietic reconstitution of SLP-76 corrects hemostasis and platelet signaling through alpha IIb beta 3 and collagen receptors. *Proc Natl Acad Sci USA* 2000; **97**: 12056–61.
- 15 Judd BA, Myung PS, Obergfell A, Myers EE, Cheng AM, Watson SP, Pear WS, Allman D, Shattil SJ, Koretzky GA. Differential requirement for LAT and SLP-76 in GPVI versus T cell receptor signaling. *J Exp Med* 2002; **195**: 705–17.
- 16 Liu J, Jackson CW, Gruppo RA, Jennings LK, Gartner TK. The β_3 subunit of the integrin $\alpha_{IIb}\beta_3$ regulates α_{IIb} -mediated outside-in signaling. *Blood* 2005; **105**: 4345–52.
- 17 Garcia A, Senis YA, Antrobus R, Hughes CE, Dwek RA, Watson SP, Zitzmann N. A global proteomics approach identifies novel phosphorylated signaling proteins in GPVI-activated platelets: involvement of G6f, a novel platelet Grb2-binding membrane adapter. *Proteomics* 2006; **6**: 5332–43.
- 18 Abtahian F, Bezman N, Clemens R, Sebza E, Cheng L, Shattil SJ, Kahn ML, Koretzky GA. Evidence for the requirement of ITAM domains but not SLP-76/Gads interaction for integrin signaling in hematopoietic cells. *Mol Cell Biol* 2006; **26**: 6936–49.
- 19 Eble JA, Beermann B, Hinz HJ, Schmidt-Hederich A. Alpha 2beta 1 integrin is not recognized by rhodocytin but is the specific, high affinity target of rhodocytin, an RGD-independent disintegrin and potent inhibitor of cell adhesion to collagen. *J Biol Chem* 2001; **276**: 12274–84.
- 20 Andrews RK, Booth WJ, Gorman JJ, Castaldi PA, Berndt MC. Purification of botrocetin from Bothrops jararaca venom. Analysis of the botrocetin-mediated interaction between von Willebrand factor and the human platelet membrane glycoprotein Ib-IX complex. *Biochemistry* 1989; **28**: 8317–26.
- 21 Shen Y, Romo GM, Dong JF, Schade A, McIntire LV, Kenny D, Whisstock JC, Berndt MC, Lopez JA, Andrews RK. Requirement of leucine-rich repeats of glycoprotein (GP) Iba for shear-dependent and static binding of von Willebrand factor to the platelet membrane GP Ib-IX-V complex. *Blood* 2000; **95**: 903–10.
- 22 Booth WJ, Furby FH, Berndt MC, Castaldi PA. Factor VIII/von Willebrand factor has potent lectin activity. *Biochem Biophys Res Commun* 1984; **118**: 495–501.
- 23 McCarty OJ, Zhao Y, Andrew N, Machesky LM, Staunton D, Frampton J, Watson SP. Evaluation of the role of platelet integrins in fibronectin-dependent spreading and adhesion. *J Thromb Haemost* 2004; **2**: 1823–33.
- 24 Suzuki-Inoue K, Inoue O, Frampton J, Watson SP. Murine GPVI stimulates weak integrin activation in PLCgamma2-/- platelets: involvement of PLCgamma1 and PI3-kinase. *Blood* 2003; **102**: 1367–73.
- 25 Dawood BB, Wilde J, Watson SP. Reference curves for aggregation and ATP secretion to aid diagnosis of platelet-based bleeding disorders: effect of inhibition of ADP and thromboxane A(2) pathways. *Platelets* 2007; **18**: 329–45.
- 26 McCarty OJ, Calaminus SD, Berndt MC, Machesky LM, Watson SP. von Willebrand factor mediates platelet spreading through glycoprotein Ib and alpha(IIb)beta3 in the presence of botrocetin and ristocetin, respectively. *J Thromb Haemost* 2006; **4**: 1367–78.
- 27 Hughan SC, Hughes CE, McCarty OJ, Schweighoffer E, Soultanova I, Ware J, Tybulewicz VL, Watson SP. GPVI potentiation of platelet activation by thrombin and adhesion molecules independent of Src kinases and Syk. *Arterioscler Thromb Vasc Biol* 2007; **27**: 422–9.
- 28 Zhang W, Tribble RP, Zhu M, Liu SK, McGlade CJ, Samelson LE. Association of Grb2, Gads, and phospholipase C-gamma 1 with phosphorylated LAT tyrosine residues.7 Effect of LAT tyrosine mutations on T cell antigen receptor-mediated signaling. *J Biol Chem* 2000; **275**: 23355–61.
- 29 Sarratt KL, Chen H, Zutter MM, Santoro SA, Hammer DA, Kahn ML. GPVI and alpha2beta1 play independent critical roles during platelet adhesion and aggregate formation to collagen under flow. *Blood* 2005; **106**: 1268–77.
- 30 Auger JM, Kuijpers MJ, Senis YA, Watson SP, Heemskerk JW. Adhesion of human and mouse platelets to collagen under shear: a unifying model. *FASEB J* 2005; **19**: 825–7.
- 31 Ishiai M, Kurosaki M, Inabe K, Chan AC, Sugamura K, Kurosaki T. Involvement of LAT, Gads, and Grb2 in compartmentation of SLP-76 to the plasma membrane. *J Exp Med* 2000; **192**: 847–56.
- 32 Paz PE, Wang S, Clarke H, Lu X, Stokoe D, Abo A. Mapping the Zap-70 phosphorylation sites on LAT (linker for activation of T cells) required for recruitment and activation of signalling proteins in T cells. *Biochem J* 2001; **356**: 461–71.
- 33 Perez-Villar JJ, Whitney GS, Sitnick MT, Dunn RJ, Venkatesan S, O'Day K, Schieven GL, Lin TA, Kanner SB. Phosphorylation of the linker for activation of T-cells by Itk promotes recruitment of Vav. *Biochemistry* 2002; **41**: 10732–40.
- 34 Seet BT, Berry DM, Maltzman JS, Shabason J, Raina M, Koretzky GA, McGlade CJ, Pawson T. Efficient T-cell receptor signaling requires a high-affinity interaction between the Gads C-SH3 domain and the SLP-76 RxxK motif. *EMBO J* 2007; **26**: 678–89.
- 35 Liu SK, Fang N, Koretzky GA, McGlade CJ. The hematopoietic-specific adaptor protein gads functions in T-cell signaling via interactions with the SLP-76 and LAT adaptors. *Curr Biol* 1999; **9**: 67–75.
- 36 Kalia N, Auger JM, Atkinson B, Watson SP. Critical role of FcR gamma-chain, LAT, PLCgamma2 and thrombin in arteriolar thrombus formation upon mild, laser-induced endothelial injury *in vivo*. *Microcirculation* 2008; **15**: 325–35.
- 37 Aguado E, Richelme S, Nunez-Cruz S, Miazek A, Mura AM, Richelme M, Guo XJ, Sainty D, He HT, Malissen B, Malissen M. Induction of T helper type 2 immunity by a point mutation in the LAT adaptor. *Science* 2002; **296**: 2036–40.
- 38 Sommers CL, Park CS, Lee J, Feng C, Fuller CL, Grinberg A, Hildebrand JA, Lacana E, Menon RK, Shores EW, Samelson LE, Love PE. A LAT mutation that inhibits T cell development yet induces lymphoproliferation. *Science* 2002; **296**: 2040–3.
- 39 Zhang W, Sloan-Lancaster J, Kitchen J, Tribble RP, Samelson LE. LAT: the ZAP-70 tyrosine kinase substrate that links T cell receptor to cellular activation. *Cell* 1998; **92**: 83–92.