

Prevalence and treatment of atrial fibrillation in UK general practice from 2000 to 2016

Adderley, Nicola; Ryan, Ronan; Nirantharakumar, Krishnarajah; Marshall, Tom

DOI:

[10.1136/heartjnl-2018-312977](https://doi.org/10.1136/heartjnl-2018-312977)

License:

None: All rights reserved

Document Version

Peer reviewed version

Citation for published version (Harvard):

Adderley, N, Ryan, R, Nirantharakumar, K & Marshall, T 2018, 'Prevalence and treatment of atrial fibrillation in UK general practice from 2000 to 2016', *Heart*. <https://doi.org/10.1136/heartjnl-2018-312977>

[Link to publication on Research at Birmingham portal](#)

General rights

Unless a licence is specified above, all rights (including copyright and moral rights) in this document are retained by the authors and/or the copyright holders. The express permission of the copyright holder must be obtained for any use of this material other than for purposes permitted by law.

- Users may freely distribute the URL that is used to identify this publication.
- Users may download and/or print one copy of the publication from the University of Birmingham research portal for the purpose of private study or non-commercial research.
- User may use extracts from the document in line with the concept of 'fair dealing' under the Copyright, Designs and Patents Act 1988 (?)
- Users may not further distribute the material nor use it for the purposes of commercial gain.

Where a licence is displayed above, please note the terms and conditions of the licence govern your use of this document.

When citing, please reference the published version.

Take down policy

While the University of Birmingham exercises care and attention in making items available there are rare occasions when an item has been uploaded in error or has been deemed to be commercially or otherwise sensitive.

If you believe that this is the case for this document, please contact UBIRA@lists.bham.ac.uk providing details and we will remove access to the work immediately and investigate.

Supplementary Table 1. Total populations and number of general practices included in the analysis, 2000-2016

Year	2000		2001		2002		2003		2004		2005		2006		2007		2008	
Age (years)	Male	Female	Male	Female	Male	Female	Male	Female	Male	Female	Male	Female	Male	Female	Male	Female	Male	Female
35-44	147,146	143,069	192,375	186,864	245,165	237,195	274,374	265,655	293,239	283,990	322,740	312,407	331,807	321,398	338,033	327,871	352,097	343,055
45-54	134,635	130,890	171,224	165,985	211,532	204,963	234,593	226,903	250,374	241,344	278,685	267,755	292,216	280,980	305,206	294,213	329,044	318,725
55-64	104,872	103,631	139,539	138,391	183,785	182,029	209,814	207,039	226,874	224,316	252,700	250,203	263,821	261,290	272,227	269,999	289,329	288,320
65-74	77,086	86,570	100,418	111,707	126,949	140,614	142,300	156,378	152,690	166,849	167,811	182,368	172,565	186,805	180,003	193,860	195,325	210,578
75-84	44,026	66,121	57,925	85,603	74,035	108,279	83,083	120,123	89,301	128,132	98,133	137,854	101,442	140,197	105,881	143,935	113,035	151,339
85+	11,255	27,806	14,727	36,432	18,074	44,210	19,349	47,320	20,789	50,573	24,845	58,366	27,253	61,997	29,118	65,187	31,618	69,618
Subtotal	519,020	558,087	676,208	724,982	859,540	917,290	963,513	1,023,418	1,033,267	1,095,204	1,144,914	1,208,953	1,189,104	1,252,667	1,230,468	1,295,065	1,310,448	1,381,635
Total	1,077,107		1,401,190		1,776,830		1,986,931		2,128,471		2,353,867		2,441,771		2,525,533		2,692,083	
Practices	238		317		426		480		513		564		579		600		633	
Year	2009		2010		2011		2012		2013		2014		2015		2016			
Age (years)	Male	Female	Male	Female	Male	Female	Male	Female	Male	Female	Male	Female	Male	Female	Male	Female		
35-44	349,208	339,756	336,547	328,751	328,052	322,459	325,755	320,660	297,433	293,360	270,652	267,102	222,383	219,666	194,688	191,369		
45-54	338,554	328,792	341,173	332,701	344,598	337,961	353,446	346,843	333,165	327,949	307,773	304,307	254,925	252,629	221,876	219,830		
55-64	288,684	289,109	285,948	287,584	281,904	285,054	280,871	284,198	263,123	266,024	244,891	246,389	206,782	207,931	182,527	183,209		
65-74	201,451	217,050	202,249	217,433	209,428	225,106	220,796	237,273	212,101	227,725	199,482	214,018	168,178	180,468	145,410	155,933		
75-84	115,346	152,401	115,880	151,583	117,864	152,361	120,898	154,015	115,625	146,120	108,171	135,339	89,670	111,761	76,803	95,580		
85+	33,296	71,022	34,527	71,208	35,629	72,291	36,220	71,998	34,839	67,408	33,030	63,439	27,314	51,409	23,916	43,875		
Subtotal	1,326,539	1,398,130	1,316,324	1,389,260	1,317,475	1,395,232	1,337,986	1,414,987	1,256,286	1,328,586	1,163,999	1,230,594	969,252	1,023,864	845,220	889,796		
Total	2,724,669		2,705,584		2,712,707		2,752,973		2,584,872		2,394,593		1,993,116		1,735,016			
Practices	638		637		635		641		600		545		455		398			

Supplementary Table 2. Age-sex specific prevalence of diagnosed AF per 1,000 population in UK primary care, 2000-2016

Age (years)	2000	2001	2002	2003	2004	2005	2006	2007	2008	2009	2010	2011	2012	2013	2014	2015	2016	% Increase 2000-2016
Males																		
35-44	1.48	1.64	1.68	1.78	1.89	2.08	1.99	1.83	1.69	1.70	1.89	1.90	1.99	2.05	2.10	2.30	2.34	57.8, p < 0.001
45-54	4.65	4.77	5.13	5.29	5.62	5.86	5.64	5.39	5.42	5.54	5.68	5.90	6.04	6.36	6.75	7.31	7.61	63.7, p < 0.001
55-64	16.79	17.31	17.26	17.65	18.26	18.82	19.21	19.21	19.59	19.97	20.50	20.74	20.83	21.34	22.05	22.89	24.01	43.0, p < 0.001
65-74	44.87	47.37	49.66	51.50	53.34	54.90	56.89	56.86	57.15	57.30	57.83	58.41	59.30	60.61	62.53	64.14	66.78	48.8, p < 0.001
75-84	89.95	95.35	99.47	106.11	111.15	115.06	116.80	119.78	122.66	124.81	128.24	130.75	132.22	135.42	139.04	143.75	147.38	63.8, p < 0.001
85+	109.91	123.51	126.70	134.06	146.71	157.30	166.92	173.23	177.27	182.72	189.24	193.83	198.34	200.64	205.90	213.44	220.94	101.0, p < 0.001
All ages	21.70	23.14	24.00	25.09	26.35	27.49	28.25	28.81	29.52	30.35	31.55	32.68	33.55	34.90	36.39	37.78	38.86	79.1, p < 0.001
Females																		
35-44	0.52	0.49	0.48	0.52	0.59	0.60	0.65	0.61	0.62	0.61	0.64	0.56	0.61	0.71	0.71	0.73	0.73	40.4, p = 0.001
45-54	1.83	1.88	1.76	1.89	1.93	2.05	1.95	1.87	1.82	1.81	1.88	1.99	2.19	2.39	2.53	2.43	2.55	38.9, p < 0.001
55-64	7.58	7.70	7.69	8.06	8.14	8.15	8.17	8.18	8.32	8.13	8.33	8.57	8.52	8.51	8.75	8.99	9.28	22.4, p < 0.001
65-74	27.72	28.53	30.04	30.57	31.78	32.43	32.95	32.74	32.26	32.09	31.89	31.58	31.48	31.61	32.04	32.88	34.25	23.5, p < 0.001
75-84	65.12	69.24	72.59	77.40	80.61	82.41	83.95	84.45	85.24	85.94	87.27	89.34	90.83	91.51	93.72	96.32	97.56	49.8, p < 0.001
85+	95.77	104.36	108.32	116.17	125.98	132.70	137.97	141.76	144.26	146.32	148.47	150.85	151.98	154.25	157.65	157.97	165.33	72.6, p < 0.001
All ages	18.76	19.84	20.44	21.31	22.33	22.99	23.45	23.70	23.83	24.04	24.45	25.03	25.29	25.76	26.54	26.82	27.33	45.7, p < 0.001
Both sexes																		
All ages	20.17	21.43	22.16	23.14	24.28	25.18	25.79	26.19	26.60	27.11	27.90	28.74	29.30	30.20	31.33	32.15	32.95	63.3, p < 0.001

Supplementary Table 3. Trends in treatment of patients with AF stratified by CHA₂DS₂-VASc score, 2000-2016

Year	CHA ₂ DS ₂ -VASc Stroke Risk	Population		Prescribed Anticoagulants		Prescribed Antiplatelets Only		Prescribed Neither Treatment	
		n	% (95% CI)	n	% (95% CI)	n	% (95% CI)	n	% (95% CI)
2000	Low	1278	5.9 (5.6 to 6.2)	254	19.9 (17.8 to 22.2)	118	9.2 (7.8 to 10.9)	906	70.9 (68.3 to 73.3)
	Moderate	1575	7.2 (6.9 to 7.6)	517	32.8 (30.5 to 35.2)	326	20.7 (18.8 to 22.8)	732	46.5 (44.0 to 48.9)
	High	18877	86.9 (86.4 to 87.3)	6684	35.4 (34.7 to 36.1)	6598	35.0 (34.3 to 35.6)	5595	29.6 (29.0 to 30.3)
	All	21730		7455	34.3 (33.7 to 34.9)	7042	32.4 (31.8 to 33.0)	7233	33.3 (32.7 to 33.9)
2001	Low	1647	5.5 (5.2 to 5.7)	296	18.0 (16.2 to 19.9)	177	10.7 (9.3 to 12.3)	1174	71.3 (69.0 to 73.4)
	Moderate	2104	7.0 (6.7 to 7.3)	730	34.7 (32.7 to 36.8)	496	23.6 (21.8 to 25.4)	878	41.7 (39.6 to 43.9)
	High	26279	87.5 (87.1 to 87.9)	9930	37.8 (37.2 to 38.4)	9486	36.1 (35.5 to 36.7)	6863	26.1 (25.6 to 26.7)
	All	30030		10956	36.5 (35.9 to 37.0)	10159	33.8 (33.3 to 34.4)	8915	29.7 (29.2 to 30.2)
2002	Low	2077	5.3 (5.1 to 5.5)	390	18.8 (17.2 to 20.5)	226	10.9 (9.6 to 12.3)	1461	70.3 (68.3 to 72.3)
	Moderate	2762	7.0 (6.8 to 7.3)	1001	36.2 (34.5 to 38.1)	691	25.0 (23.4 to 26.7)	1070	38.7 (36.9 to 40.6)
	High	34539	87.7 (87.4 to 88.0)	13489	39.1 (38.5 to 39.6)	12684	36.7 (36.2 to 37.2)	8366	24.2 (23.8 to 24.7)
	All	39378		14880	37.8 (37.3 to 38.3)	13601	34.5 (34.1 to 35.0)	10897	27.7 (27.2 to 28.1)
2003	Low	2310	5.0 (4.8 to 5.2)	392	17.0 (15.5 to 18.6)	290	12.6 (11.3 to 14.0)	1628	70.5 (68.6 to 72.3)
	Moderate	3191	6.9 (6.7 to 7.2)	1201	37.6 (36.0 to 39.3)	861	27.0 (25.5 to 28.5)	1129	35.4 (33.7 to 37.1)
	High	40481	88.0 (87.7 to 88.3)	16622	41.1 (40.6 to 41.5)	15153	37.4 (37.0 to 37.9)	8706	21.5 (21.1 to 21.9)
	All	45982		18215	39.6 (39.2 to 40.1)	16304	35.5 (35.0 to 35.9)	11463	24.9 (24.5 to 25.3)
2004	Low	2423	4.7 (4.5 to 4.9)	409	16.9 (15.4 to 18.4)	306	12.6 (11.4 to 14.0)	1708	70.5 (68.6 to 72.3)
	Moderate	3528	6.8 (6.6 to 7.0)	1376	39.0 (37.4 to 40.6)	952	27.0 (25.5 to 28.5)	1200	34.0 (32.5 to 35.6)
	High	45731	88.5 (88.2 to 88.8)	19562	42.8 (42.3 to 43.2)	17333	37.9 (37.5 to 38.3)	8836	19.3 (19.0 to 19.7)
	All	51682		21347	41.3 (40.9 to 41.7)	18591	36.0 (35.6 to 36.4)	11744	22.7 (22.4 to 23.1)
2005	Low	2698	4.6 (4.4 to 4.7)	467	17.3 (15.9 to 18.8)	335	12.4 (11.2 to 13.7)	1896	70.3 (68.5 to 72.0)
	Moderate	4055	6.8 (6.6 to 7.0)	1567	38.6 (37.2 to 40.2)	1125	27.7 (26.4 to 29.1)	1363	33.6 (32.2 to 35.1)
	High	52511	88.6 (88.3 to 88.9)	23392	44.5 (44.1 to 45.0)	19671	37.5 (37.0 to 37.9)	9448	18.0 (17.7 to 18.3)
	All	59264		25426	42.9 (42.5 to 43.3)	21131	35.7 (35.3 to 36.0)	12707	21.4 (21.1 to 21.8)
2006	Low	2641	4.2 (4.0 to 4.4)	479	18.1 (16.7 to 19.7)	485	18.4 (16.9 to 19.9)	1677	63.5 (61.6 to 65.3)
	Moderate	4230	6.7 (6.5 to 6.9)	1711	40.4 (39.0 to 41.9)	1325	31.3 (29.9 to 32.7)	1194	28.2 (26.9 to 29.6)
	High	56091	89.1 (88.8 to 89.3)	26485	47.2 (46.8 to 47.6)	21141	37.7 (37.3 to 38.1)	8465	15.1 (14.8 to 15.4)
	All	62962		28675	45.5 (45.2 to 45.9)	22951	36.5 (36.1 to 36.8)	11336	18.0 (17.7 to 18.3)
2007	Low	2403	3.6 (3.5 to 3.8)	423	17.6 (16.1 to 19.2)	590	24.6 (22.9 to 26.3)	1390	57.8 (55.9 to 59.8)
	Moderate	4345	6.6 (6.4 to 6.8)	1858	42.8 (41.3 to 44.2)	1489	34.3 (32.9 to 35.7)	998	23.0 (21.7 to 24.2)
	High	59403	89.8 (89.6 to 90.0)	29218	49.2 (48.8 to 49.6)	22659	38.1 (37.8 to 38.5)	7526	12.7 (12.4 to 12.9)
	All	66151		31499	47.6 (47.2 to 48.0)	24738	37.4 (37.0 to 37.8)	9914	15.0 (14.7 to 15.3)
2008	Low	2477	3.5 (3.3 to 3.6)	425	17.2 (15.7 to 18.7)	625	25.2 (23.6 to 27.0)	1427	57.6 (55.7 to 59.5)
	Moderate	4630	6.5 (6.3 to 6.6)	1994	43.1 (41.6 to 44.5)	1607	34.7 (33.4 to 36.1)	1029	22.2 (21.1 to 23.4)
	High	64498	90.1 (89.9 to 90.3)	32751	50.8 (50.4 to 51.2)	24034	37.3 (36.9 to 37.6)	7713	12.0 (11.7 to 12.2)
	All	71605		35170	49.1 (48.8 to 49.5)	26266	36.7 (36.3 to 37.0)	10169	14.2 (13.9 to 14.5)
2009	Low	2448	3.3 (3.2 to 3.4)	389	15.9 (14.5 to 17.4)	606	24.8 (23.1 to 26.5)	1453	59.4 (57.4 to 61.3)
	Moderate	4727	6.4 (6.2 to 6.6)	1957	41.4 (40.0 to 42.8)	1726	36.5 (35.2 to 37.9)	1044	22.1 (20.9 to 23.3)
	High	66690	90.3 (90.1 to 90.5)	34431	51.6 (51.2 to 52.0)	23973	35.9 (35.6 to 36.3)	8286	12.4 (12.2 to 12.7)
	All	73865		36777	49.8 (49.4 to 50.2)	26305	35.6 (35.3 to 36.0)	10783	14.6 (14.3 to 14.9)
2010	Low	2494	3.3 (3.2 to 3.4)	360	14.4 (13.1 to 15.9)	637	25.5 (23.9 to 27.3)	1497	60.0 (58.1 to 61.9)
	Moderate	4753	6.3 (6.1 to 6.5)	1889	39.7 (38.4 to 41.1)	1749	36.8 (35.4 to 38.2)	1115	23.5 (22.3 to 24.7)

	High	68243	90.4 (90.2 to 90.6)	35871	52.6 (52.2 to 52.9)	24075	35.3 (34.9 to 35.6)	8297	12.2 (11.9 to 12.4)
	All	75490		38120	50.5 (50.1 to 50.9)	26461	35.1 (34.7 to 35.4)	10909	14.5 (14.2 to 14.7)
2011	Low	2478	3.2 (3.1 to 3.3)	323	13.0 (11.8 to 14.4)	625	25.2 (23.6 to 27.0)	1530	61.7 (59.8 to 63.6)
	Moderate	4891	6.3 (6.1 to 6.4)	1879	38.4 (37.1 to 39.8)	1879	38.4 (37.1 to 39.8)	1133	23.2 (22.0 to 24.4)
	High	70607	90.5 (90.3 to 90.8)	38173	54.1 (53.7 to 54.4)	24147	34.2 (33.9 to 34.5)	8287	11.7 (11.5 to 12.0)
	All	77976		40375	51.8 (51.4 to 52.1)	26651	34.2 (33.8 to 34.5)	10950	14.0 (13.8 to 14.3)
2012	Low	2659	3.3 (3.2 to 3.4)	351	13.2 (12.0 to 14.5)	551	20.7 (19.2 to 22.3)	1757	66.1 (64.3 to 67.9)
	Moderate	4912	6.1 (5.9 to 6.3)	1857	37.8 (36.5 to 39.2)	1797	36.6 (35.2 to 37.9)	1258	25.6 (24.4 to 26.9)
	High	73103	90.6 (90.4 to 90.8)	41929	57.4 (57.0 to 57.7)	22778	31.2 (30.8 to 31.5)	8396	11.5 (11.3 to 11.7)
	All	80674		44137	54.7 (54.4 to 55.1)	25126	31.1 (30.8 to 31.5)	11411	14.1 (13.9 to 14.4)
2013	Low	2614	3.3 (3.2 to 3.5)	304	11.6 (10.5 to 12.9)	368	14.1 (12.8 to 15.5)	1942	74.3 (72.6 to 75.9)
	Moderate	4726	6.1 (5.9 to 6.2)	1771	37.5 (36.1 to 38.9)	1569	33.2 (31.9 to 34.6)	1386	29.3 (28.0 to 30.6)
	High	70732	90.6 (90.4 to 90.8)	43503	61.5 (61.1 to 61.9)	19203	27.1 (26.8 to 27.5)	8026	11.3 (11.1 to 11.6)
	All	78072		45578	58.4 (58.0 to 58.7)	21140	27.1 (26.8 to 27.4)	11354	14.5 (14.3 to 14.8)
2014	Low	2575	3.4 (3.3 to 3.6)	262	10.2 (9.1 to 11.4)	263	10.2 (9.1 to 11.4)	2050	79.6 (78.0 to 81.1)
	Moderate	4575	6.1 (5.9 to 6.3)	1867	40.8 (39.4 to 42.2)	1221	26.7 (25.4 to 28.0)	1487	32.5 (31.2 to 33.9)
	High	67870	90.5 (90.3 to 90.7)	44637	65.8 (65.4 to 66.1)	15080	22.2 (21.9 to 22.5)	8153	12.0 (11.8 to 12.3)
	All	75020		46766	62.3 (62.0 to 62.7)	16564	22.1 (21.8 to 22.4)	11690	15.6 (15.3 to 15.8)
2015	Low	2108	3.3 (3.2 to 3.4)	220	10.4 (9.2 to 11.8)	148	7.0 (6.0 to 8.2)	1740	82.5 (80.9 to 84.1)
	Moderate	4030	6.3 (6.1 to 6.5)	1806	44.8 (43.3 to 46.4)	777	19.3 (18.1 to 20.5)	1447	35.9 (34.4 to 37.4)
	High	57942	90.4 (90.2 to 90.6)	41693	72.0 (71.6 to 72.3)	9338	16.1 (15.8 to 16.4)	6911	11.9 (11.7 to 12.2)
	All	64080		43719	68.2 (67.9 to 68.6)	10263	16.0 (15.7 to 16.3)	10098	15.8 (15.5 to 16.0)
2016	Low	1917	3.4 (3.2 to 3.5)	185	9.7 (8.4 to 11.1)	93	4.9 (4.0 to 5.9)	1639	85.5 (83.8 to 87.0)
	Moderate	3603	6.3 (6.1 to 6.5)	1696	47.1 (45.4 to 48.7)	537	14.9 (13.8 to 16.1)	1370	38.0 (36.5 to 39.6)
	High	51641	90.3 (90.1 to 90.6)	38977	75.5 (75.1 to 75.8)	6370	12.3 (12.1 to 12.6)	6294	12.2 (11.9 to 12.5)
	All	57161		40858	71.5 (71.1 to 71.8)	7000	12.2 (12.0 to 12.5)	9303	16.3 (16.0 to 16.6)

Supplementary Table 4. Trends in treatment of patients with AF stratified by CHADS₂ score, 2000-2016

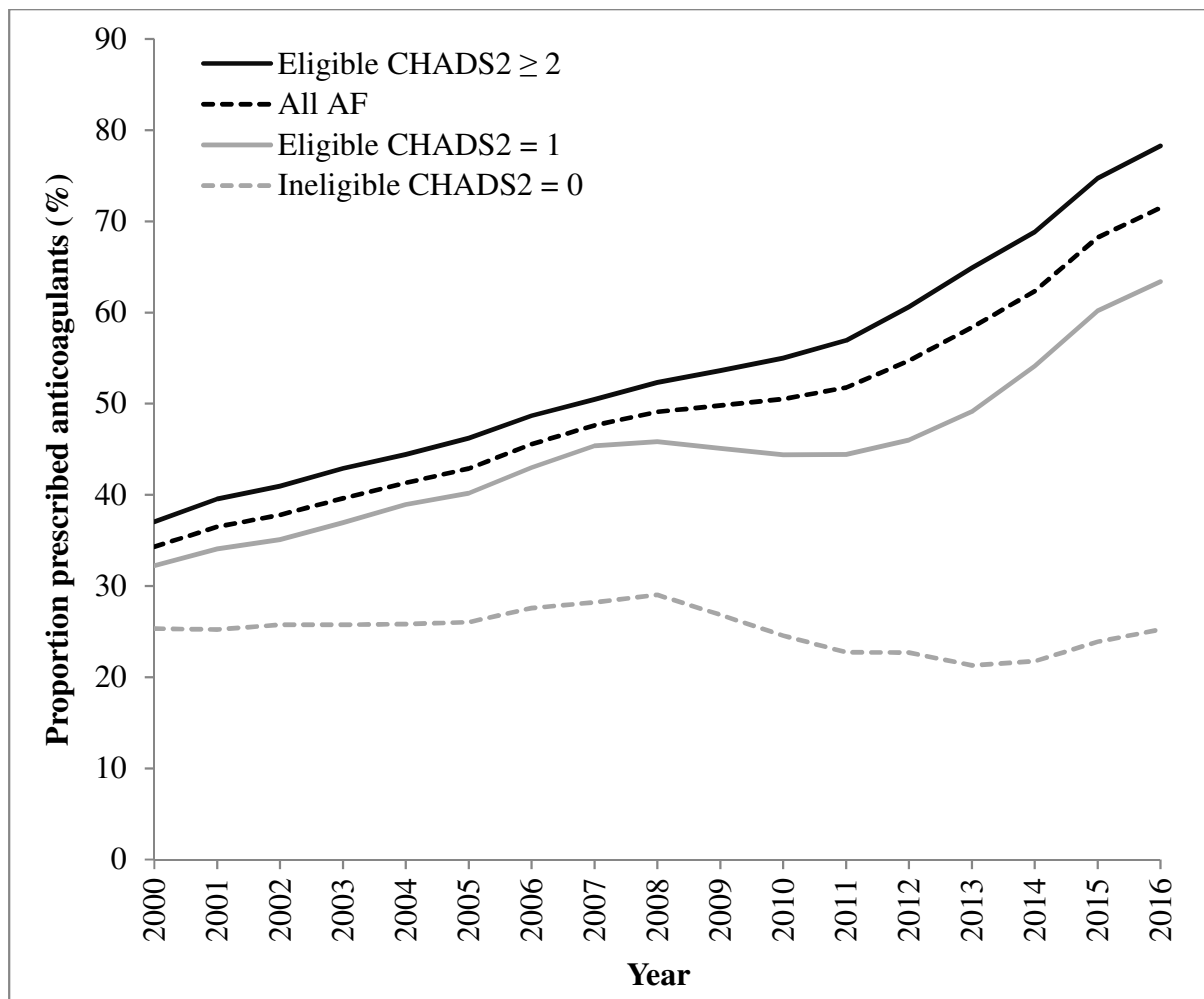
Year	CHADS ₂ Stroke Risk	Population		Prescribed Anticoagulants		Prescribed Antiplatelets Only		Prescribed Neither Treatment	
		n	% (95% CI)	n	% (95% CI)	n	% (95% CI)	n	% (95% CI)
2000	Low	2548	11.7 (11.3 to 12.2)	646	25.4 (23.7 to 27.1)	396	15.5 (14.2 to 17.0)	1506	59.1 (57.2 to 61.0)
	Moderate	6161	28.4 (27.8 to 29.0)	1985	32.2 (31.1 to 33.4)	1819	29.5 (28.4 to 30.7)	2357	38.3 (37.1 to 39.5)
	High	13021	59.9 (59.3 to 60.6)	4824	37.0 (36.2 to 37.9)	4827	37.1 (36.2 to 37.9)	3370	25.9 (25.1 to 26.6)
	All	21730		7455	34.3 (33.7 to 34.9)	7042	32.4 (31.8 to 33.0)	7233	33.3 (32.7 to 33.9)
2001	Low	3261	10.9 (10.5 to 11.2)	823	25.2 (23.8 to 26.8)	550	16.9 (15.6 to 18.2)	1888	57.9 (56.2 to 59.6)
	Moderate	8282	27.6 (27.1 to 28.1)	2823	34.1 (33.1 to 35.1)	2634	31.8 (30.8 to 32.8)	2825	34.1 (33.1 to 35.1)
	High	18487	61.6 (61.0 to 62.1)	7310	39.5 (38.8 to 40.2)	6975	37.7 (37.0 to 38.4)	4202	22.7 (22.1 to 23.3)
	All	30030		10956	36.5 (35.9 to 37.0)	10159	33.8 (33.3 to 34.4)	8915	29.7 (29.2 to 30.2)
2002	Low	4037	10.3 (10.0 to 10.6)	1040	25.8 (24.4 to 27.1)	694	17.2 (16.1 to 18.4)	2303	57.0 (55.5 to 58.6)
	Moderate	10784	27.4 (26.9 to 27.8)	3785	35.1 (34.2 to 36.0)	3568	33.1 (32.2 to 34.0)	3431	31.8 (30.9 to 32.7)
	High	24557	62.4 (61.9 to 62.8)	10055	40.9 (40.3 to 41.6)	9339	38.0 (37.4 to 38.6)	5163	21.0 (20.5 to 21.5)
	All	39378		14880	37.8 (37.3 to 38.3)	13601	34.5 (34.1 to 35.0)	10897	27.7 (27.2 to 28.1)
2003	Low	4482	9.7 (9.5 to 10.0)	1154	25.7 (24.5 to 27.0)	850	19.0 (17.8 to 20.1)	2478	55.3 (53.8 to 56.7)
	Moderate	12361	26.9 (26.5 to 27.3)	4566	36.9 (36.1 to 37.8)	4147	33.5 (32.7 to 34.4)	3648	29.5 (28.7 to 30.3)
	High	29139	63.4 (62.9 to 63.8)	12495	42.9 (42.3 to 43.4)	11307	38.8 (38.2 to 39.4)	5337	18.3 (17.9 to 18.8)
	All	45982		18215	39.6 (39.2 to 40.1)	16304	35.5 (35.0 to 35.9)	11463	24.9 (24.5 to 25.3)
2004	Low	4618	8.9 (8.7 to 9.2)	1192	25.8 (24.6 to 27.1)	894	19.4 (18.2 to 20.5)	2532	54.8 (53.4 to 56.3)
	Moderate	13758	26.6 (26.2 to 27.0)	5355	38.9 (38.1 to 39.7)	4640	33.7 (32.9 to 34.5)	3763	27.4 (26.6 to 28.1)
	High	33306	64.4 (64.0 to 64.9)	14800	44.4 (43.9 to 45.0)	13057	39.2 (38.7 to 39.7)	5449	16.4 (16.0 to 16.8)
	All	51682		21347	41.3 (40.9 to 41.7)	18591	36.0 (35.6 to 36.4)	11744	22.7 (22.4 to 23.1)
2005	Low	5020	8.5 (8.2 to 8.7)	1308	26.1 (24.9 to 27.3)	942	18.8 (17.7 to 19.9)	2770	55.2 (53.8 to 56.6)
	Moderate	15727	26.5 (26.2 to 26.9)	6320	40.2 (39.4 to 41.0)	5313	33.8 (33.0 to 34.5)	4094	26.0 (25.4 to 26.7)
	High	38517	65.0 (64.6 to 65.4)	17798	46.2 (45.7 to 46.7)	14876	38.6 (38.1 to 39.1)	5843	15.2 (14.8 to 15.5)
	All	59264		25426	42.9 (42.5 to 43.3)	21131	35.7 (35.3 to 36.0)	12707	21.4 (21.1 to 21.8)
2006	Low	4918	7.8 (7.6 to 8.0)	1357	27.6 (26.4 to 28.9)	1132	23.0 (21.9 to 24.2)	2429	49.4 (48.0 to 50.8)
	Moderate	16554	26.3 (25.9 to 26.6)	7119	43.0 (42.3 to 43.8)	5879	35.5 (34.8 to 36.2)	3556	21.5 (20.9 to 22.1)
	High	41490	65.9 (65.5 to 66.3)	20199	48.7 (48.2 to 49.2)	15940	38.4 (38.0 to 38.9)	5351	12.9 (12.6 to 13.2)
	All	62962		28675	45.5 (45.2 to 45.9)	22951	36.5 (36.1 to 36.8)	11336	18.0 (17.7 to 18.3)
2007	Low	4597	6.9 (6.8 to 7.1)	1297	28.2 (26.9 to 29.5)	1273	27.7 (26.4 to 29.0)	2027	44.1 (42.7 to 45.5)
	Moderate	17035	25.8 (25.4 to 26.1)	7733	45.4 (44.6 to 46.1)	6339	37.2 (36.5 to 37.9)	2963	17.4 (16.8 to 18.0)
	High	44519	67.3 (66.9 to 67.7)	22469	50.5 (50.0 to 50.9)	17126	38.5 (38.0 to 38.9)	4924	11.1 (10.8 to 11.4)
	All	66151		31499	47.6 (47.2 to 48.0)	24738	37.4 (37.0 to 37.8)	9914	15.0 (14.7 to 15.3)
2008	Low	4760	6.6 (6.5 to 6.8)	1382	29.0 (27.8 to 30.3)	1313	27.6 (26.3 to 28.9)	2065	43.4 (42.0 to 44.8)
	Moderate	18248	25.5 (25.2 to 25.8)	8363	45.8 (45.1 to 46.6)	6835	37.5 (36.8 to 38.2)	3050	16.7 (16.2 to 17.3)
	High	48597	67.9 (67.5 to 68.2)	25425	52.3 (51.9 to 52.8)	18118	37.3 (36.9 to 37.7)	5054	10.4 (10.1 to 10.7)
	All	71605		35170	49.1 (48.8 to 49.5)	26266	36.7 (36.3 to 37.0)	10169	14.2 (13.9 to 14.5)
2009	Low	4674	6.3 (6.2 to 6.5)	1254	26.8 (25.6 to 28.1)	1277	27.3 (26.1 to 28.6)	2143	45.8 (44.4 to 47.3)
	Moderate	18641	25.2 (24.9 to 25.6)	8409	45.1 (44.4 to 45.8)	7013	37.6 (36.9 to 38.3)	3219	17.3 (16.7 to 17.8)
	High	50550	68.4 (68.1 to 68.8)	27114	53.6 (53.2 to 54.1)	18015	35.6 (35.2 to 36.1)	5421	10.7 (10.5 to 11.0)
	All	73865		36777	49.8 (49.4 to 50.2)	26305	35.6 (35.3 to 36.0)	10783	14.6 (14.3 to 14.9)
2010	Low	4603	6.1 (5.9 to 6.3)	1130	24.5 (23.3 to 25.8)	1305	28.4 (27.1 to 29.7)	2168	47.1 (45.7 to 48.5)
	Moderate	18855	25.0 (24.7 to 25.3)	8369	44.4 (43.7 to 45.1)	7172	38.0 (37.3 to 38.7)	3314	17.6 (17.0 to 18.1)
	High	52032	68.9 (68.6 to 69.3)	28621	55.0 (54.6 to 55.4)	17984	34.6 (34.2 to 35.0)	5427	10.4 (10.2 to 10.7)

2011	All	75490		38120	50.5 (50.1 to 50.9)	26461	35.1 (34.7 to 35.4)	10909	14.5 (14.2 to 14.7)
	Low	4640	6.0 (5.8 to 6.1)	1055	22.7 (21.6 to 24.0)	1325	28.6 (27.3 to 29.9)	2260	48.7 (47.3 to 50.1)
	Moderate	19373	24.8 (24.5 to 25.1)	8605	44.4 (43.7 to 45.1)	7503	38.7 (38.0 to 39.4)	3265	16.9 (16.3 to 17.4)
	High	53963	69.2 (68.9 to 69.5)	30715	56.9 (56.5 to 57.3)	17823	33.0 (32.6 to 33.4)	5425	10.1 (9.8 to 10.3)
2012	All	77976		40375	51.8 (51.4 to 52.1)	26651	34.2 (33.8 to 34.5)	10950	14.0 (13.8 to 14.3)
	Low	4902	6.1 (5.9 to 6.2)	1113	22.7 (21.6 to 23.9)	1240	25.3 (24.1 to 26.5)	2549	52.0 (50.6 to 53.4)
	Moderate	19941	24.7 (24.4 to 25.0)	9177	46.0 (45.3 to 46.7)	7266	36.4 (35.8 to 37.1)	3498	17.5 (17.0 to 18.1)
	High	55831	69.2 (68.9 to 69.5)	33847	60.6 (60.2 to 61.0)	16620	29.8 (29.4 to 30.1)	5364	9.6 (9.4 to 9.9)
2013	All	80674		44137	54.7 (54.4 to 55.1)	25126	31.1 (30.8 to 31.5)	11411	14.1 (13.9 to 14.4)
	Low	4761	6.1 (5.9 to 6.3)	1014	21.3 (20.2 to 22.5)	954	20.0 (18.9 to 21.2)	2793	58.7 (57.3 to 60.1)
	Moderate	19075	24.4 (24.1 to 24.7)	9373	49.1 (48.4 to 49.8)	6250	32.8 (32.1 to 33.4)	3452	18.1 (17.6 to 18.6)
	High	54236	69.5 (69.1 to 69.8)	35191	64.9 (64.5 to 65.3)	13936	25.7 (25.3 to 26.1)	5109	9.4 (9.2 to 9.7)
2014	All	78072		45578	58.4 (58.0 to 58.7)	21140	27.1 (26.8 to 27.4)	11354	14.5 (14.3 to 14.8)
	Low	4657	6.2 (6.0 to 6.4)	1013	21.8 (20.6 to 23.0)	743	16.0 (14.9 to 17.0)	2901	62.3 (60.9 to 63.7)
	Moderate	18156	24.2 (23.9 to 24.5)	9825	54.1 (53.4 to 54.8)	4785	26.4 (25.7 to 27.0)	3546	19.5 (19.0 to 20.1)
	High	52207	69.6 (69.3 to 69.9)	35928	68.8 (68.4 to 69.2)	11036	21.1 (20.8 to 21.5)	5243	10.0 (9.8 to 10.3)
2015	All	75020		46766	62.3 (62.0 to 62.7)	16564	22.1 (21.8 to 22.4)	11690	15.6 (15.3 to 15.8)
	Low	3797	5.9 (5.7 to 6.1)	908	23.9 (22.6 to 25.3)	405	10.7 (9.7 to 11.7)	2484	65.4 (63.9 to 66.9)
	Moderate	15431	24.1 (23.8 to 24.4)	9291	60.2 (59.4 to 61.0)	2953	19.1 (18.5 to 19.8)	3187	20.7 (20.0 to 21.3)
	High	44852	70.0 (69.6 to 70.3)	33520	74.7 (74.3 to 75.1)	6905	15.4 (15.1 to 15.7)	4427	9.9 (9.6 to 10.1)
2016	All	64080		43719	68.2 (67.9 to 68.6)	10263	16.0 (15.7 to 16.3)	10098	15.8 (15.5 to 16.0)
	Low	3427	6.0 (5.8 to 6.2)	865	25.2 (23.8 to 26.7)	261	7.6 (6.8 to 8.6)	2301	67.1 (65.6 to 68.7)
	Moderate	13879	24.3 (23.9 to 24.6)	8799	63.4 (62.6 to 64.2)	2014	14.5 (13.9 to 15.1)	3066	22.1 (21.4 to 22.8)
	High	39855	69.7 (69.3 to 70.1)	31194	78.3 (77.9 to 78.7)	4725	11.9 (11.5 to 12.2)	3936	9.9 (9.6 to 10.2)
	All	57161		40858	71.5 (71.1 to 71.8)	7000	12.2 (12.0 to 12.5)	9303	16.3 (16.0 to 16.6)

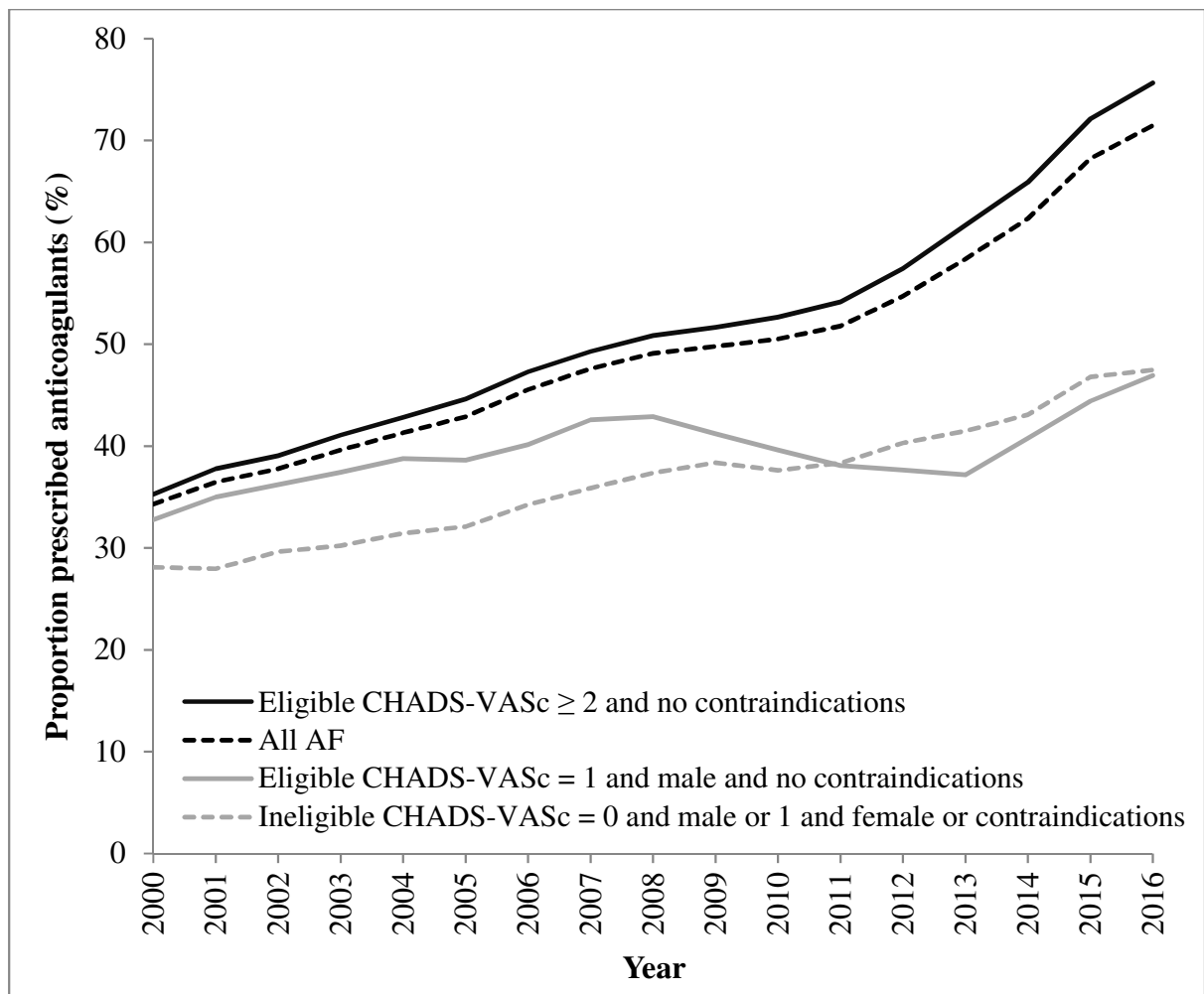
Supplementary Table 5. Trends in treatment of patients with AF stratified by CHA₂DS₂-VASc score and presence/absence of contraindications, 2000-2016

Year	CHA ₂ DS ₂ -VASc Stroke Risk/Contraindications	Population		Prescribed Anticoagulants		Prescribed Antiplatelets Only		Prescribed Neither Treatment	
		n	% (95% CI)	n	% (95% CI)	n	% (95% CI)	n	% (95% CI)
2000	Low or contraindicated	2399	11.0 (10.6 to 11.5)	674	28.1 (26.3 to 29.9)	472	19.7 (18.1 to 21.3)	1253	52.2 (50.2 to 54.2)
	Moderate	1510	6.9 (6.6 to 7.3)	495	32.8 (30.5 to 35.2)	310	20.5 (18.6 to 22.6)	705	46.7 (44.2 to 49.2)
	High	17821	82.0 (81.5 to 82.5)	6286	35.3 (34.6 to 36.0)	6260	35.1 (34.4 to 35.8)	5275	29.6 (28.9 to 30.3)
	All	21730		7455	34.3 (33.7 to 34.9)	7042	32.4 (31.8 to 33.0)	7233	33.3 (32.7 to 33.9)
2001	Low or contraindicated	3375	11.2 (10.9 to 11.6)	944	28.0 (26.5 to 29.5)	746	22.1 (20.7 to 23.5)	1685	49.9 (48.2 to 51.6)
	Moderate	2011	6.7 (6.4 to 7.0)	704	35.0 (33.0 to 37.1)	473	23.5 (21.7 to 25.4)	834	41.5 (39.3 to 43.6)
	High	24644	82.1 (81.6 to 82.5)	9308	37.8 (37.2 to 38.4)	8940	36.3 (35.7 to 36.9)	6396	26.0 (25.4 to 26.5)
	All	30030		10956	36.5 (35.9 to 37.0)	10159	33.8 (33.3 to 34.4)	8915	29.7 (29.2 to 30.2)
2002	Low or contraindicated	4500	11.4 (11.1 to 11.7)	1333	29.6 (28.3 to 31.0)	1062	23.6 (22.4 to 24.9)	2105	46.8 (45.3 to 48.2)
	Moderate	2614	6.6 (6.4 to 6.9)	947	36.2 (34.4 to 38.1)	650	24.9 (23.2 to 26.6)	1017	38.9 (37.1 to 40.8)
	High	32264	81.9 (81.6 to 82.3)	12600	39.1 (38.5 to 39.6)	11889	36.8 (36.3 to 37.4)	7775	24.1 (23.6 to 24.6)
	All	39378		14880	37.8 (37.3 to 38.3)	13601	34.5 (34.1 to 35.0)	10897	27.7 (27.2 to 28.1)
2003	Low or contraindicated	5209	11.3 (11.0 to 11.6)	1575	30.2 (29.0 to 31.5)	1333	25.6 (24.4 to 26.8)	2301	44.2 (42.8 to 45.5)
	Moderate	3035	6.6 (6.4 to 6.8)	1136	37.4 (35.7 to 39.2)	811	26.7 (25.2 to 28.3)	1088	35.8 (34.2 to 37.6)
	High	37738	82.1 (81.7 to 82.4)	15504	41.1 (40.6 to 41.6)	14160	37.5 (37.0 to 38.0)	8074	21.4 (21.0 to 21.8)
	All	45982		18215	39.6 (39.2 to 40.1)	16304	35.5 (35.0 to 35.9)	11463	24.9 (24.5 to 25.3)
2004	Low or contraindicated	5674	11.0 (10.7 to 11.3)	1784	31.4 (30.2 to 32.7)	1443	25.4 (24.3 to 26.6)	2447	43.1 (41.8 to 44.4)
	Moderate	3372	6.5 (6.3 to 6.7)	1308	38.8 (37.2 to 40.4)	911	27.0 (25.5 to 28.5)	1153	34.2 (32.6 to 35.8)
	High	42636	82.5 (82.2 to 82.8)	18255	42.8 (42.3 to 43.3)	16237	38.1 (37.6 to 38.5)	8144	19.1 (18.7 to 19.5)
	All	51682		21347	41.3 (40.9 to 41.7)	18591	36.0 (35.6 to 36.4)	11744	22.7 (22.4 to 23.1)
2005	Low or contraindicated	6305	10.6 (10.4 to 10.9)	2024	32.1 (31.0 to 33.3)	1575	25.0 (23.9 to 26.1)	2706	42.9 (41.7 to 44.1)
	Moderate	3881	6.5 (6.4 to 6.8)	1499	38.6 (37.1 to 40.2)	1072	27.6 (26.2 to 29.1)	1310	33.8 (32.3 to 35.3)
	High	49078	82.8 (82.5 to 83.1)	21903	44.6 (44.2 to 45.1)	18484	37.7 (37.2 to 38.1)	8691	17.7 (17.4 to 18.0)
	All	59264		25426	42.9 (42.5 to 43.3)	21131	35.7 (35.3 to 36.0)	12707	21.4 (21.1 to 21.8)
2006	Low or contraindicated	6306	10.0 (9.8 to 10.3)	2161	34.3 (33.1 to 35.4)	1738	27.6 (26.5 to 28.7)	2407	38.2 (37.0 to 39.4)
	Moderate	4062	6.5 (6.3 to 6.6)	1631	40.2 (38.7 to 41.7)	1275	31.4 (30.0 to 32.8)	1156	28.5 (27.1 to 29.9)
	High	52594	83.5 (83.2 to 83.8)	24883	47.3 (46.9 to 47.7)	19938	37.9 (37.5 to 38.3)	7773	14.8 (14.5 to 15.1)
	All	62962		28675	45.5 (45.2 to 45.9)	22951	36.5 (36.1 to 36.8)	11336	18.0 (17.7 to 18.3)
2007	Low or contraindicated	6203	9.4 (9.2 to 9.6)	2225	35.9 (34.7 to 37.1)	1932	31.1 (30.0 to 32.3)	2046	33.0 (31.8 to 34.2)
	Moderate	4167	6.3 (6.1 to 6.5)	1774	42.6 (41.1 to 44.1)	1428	34.3 (32.8 to 35.7)	965	23.2 (21.9 to 24.5)
	High	55781	84.3 (84.0 to 84.6)	27500	49.3 (48.9 to 49.7)	21378	38.3 (37.9 to 38.7)	6903	12.4 (12.1 to 12.7)
	All	66151		31499	47.6 (47.2 to 48.0)	24738	37.4 (37.0 to 37.8)	9914	15.0 (14.7 to 15.3)
2008	Low or contraindicated	6631	9.3 (9.1 to 9.5)	2478	37.4 (36.2 to 38.5)	1983	29.9 (28.8 to 31.0)	2170	32.7 (31.6 to 33.9)
	Moderate	4421	6.2 (6.0 to 6.4)	1897	42.9 (41.5 to 44.4)	1548	35.0 (33.6 to 36.4)	976	22.1 (20.9 to 23.3)
	High	60553	84.6 (84.3 to 84.8)	30795	50.9 (50.5 to 51.3)	22735	37.5 (37.2 to 37.9)	7023	11.6 (11.3 to 11.9)
	All	71605		35170	49.1 (48.8 to 49.5)	26266	36.7 (36.3 to 37.0)	10169	14.2 (13.9 to 14.5)
2009	Low or contraindicated	6874	9.3 (9.1 to 9.5)	2637	38.4 (37.2 to 39.5)	2030	29.5 (28.5 to 30.6)	2207	32.1 (31.0 to 33.2)
	Moderate	4537	6.1 (6.0 to 6.3)	1870	41.2 (39.8 to 42.7)	1668	36.8 (35.4 to 38.2)	999	22.0 (20.8 to 23.2)
	High	62454	84.6 (84.3 to 84.8)	32270	51.7 (51.3 to 52.1)	22607	36.2 (35.8 to 36.6)	7577	12.1 (11.9 to 12.4)
	All	73865		36777	49.8 (49.4 to 50.2)	26305	35.6 (35.3 to 36.0)	10783	14.6 (14.3 to 14.9)
2010	Low or contraindicated	6930	9.2 (9.0 to 9.4)	2607	37.6 (36.5 to 38.8)	2057	29.7 (28.6 to 30.8)	2266	32.7 (31.6 to 33.8)
	Moderate	4548	6.0 (5.9 to 6.2)	1802	39.6 (38.2 to 41.1)	1680	36.9 (35.5 to 38.4)	1066	23.4 (22.2 to 24.7)
	High	64012	84.8 (84.5 to 85.0)	33711	52.7 (52.3 to 53.1)	22724	35.5 (35.1 to 35.9)	7577	11.8 (11.6 to 12.1)

		All	75490		38120	50.5 (50.1 to 50.9)	26461	35.1 (34.7 to 35.4)	10909	14.5 (14.2 to 14.7)
2011	Low or contraindicated		7002	9.0 (8.8 to 9.2)	2685	38.3 (37.2 to 39.5)	2048	29.2 (28.2 to 30.3)	2269	32.4 (31.3 to 33.5)
		Moderate	4701	6.0 (5.9 to 6.2)	1791	38.1 (36.7 to 39.5)	1817	38.7 (37.3 to 40.1)	1093	23.3 (22.1 to 24.5)
		High	66273	85.0 (84.7 to 85.2)	35899	54.2 (53.8 to 54.5)	22786	34.4 (34.0 to 34.7)	7588	11.4 (11.2 to 11.7)
		All	77976		40375	51.8 (51.4 to 52.1)	26651	34.2 (33.8 to 34.5)	10950	14.0 (13.8 to 14.3)
2012	Low or contraindicated		7390	9.2 (9.0 to 9.4)	2978	40.3 (39.2 to 41.4)	1912	25.9 (24.9 to 26.9)	2500	33.8 (32.8 to 34.9)
		Moderate	4726	5.9 (5.7 to 6.0)	1780	37.7 (36.3 to 39.1)	1731	36.6 (35.3 to 38.0)	1215	25.7 (24.5 to 27.0)
		High	68558	85.0 (84.7 to 85.2)	39379	57.4 (57.1 to 57.8)	21483	31.3 (31.0 to 31.7)	7696	11.2 (11.0 to 11.5)
		All	80674		44137	54.7 (54.4 to 55.1)	25126	31.1 (30.8 to 31.5)	11411	14.1 (13.9 to 14.4)
2013	Low or contraindicated		7209	9.2 (9.0 to 9.4)	2992	41.5 (40.4 to 42.6)	1534	21.3 (20.3 to 22.2)	2683	37.2 (36.1 to 38.3)
		Moderate	4561	5.8 (5.7 to 6.0)	1696	37.2 (35.8 to 38.6)	1520	33.3 (32.0 to 34.7)	1345	29.5 (28.2 to 30.8)
		High	66302	84.9 (84.7 to 85.2)	40890	61.7 (61.3 to 62.0)	18086	27.3 (26.9 to 27.6)	7326	11.0 (10.8 to 11.3)
		All	78072		45578	58.4 (58.0 to 58.7)	21140	27.1 (26.8 to 27.4)	11354	14.5 (14.3 to 14.8)
2014	Low or contraindicated		6842	9.1 (8.9 to 9.3)	2948	43.1 (41.9 to 44.3)	1130	16.5 (15.7 to 17.4)	2764	40.4 (39.2 to 41.6)
		Moderate	4411	5.9 (5.7 to 6.1)	1799	40.8 (39.3 to 42.2)	1178	26.7 (25.4 to 28.0)	1434	32.5 (31.1 to 33.9)
		High	63767	85.0 (84.7 to 85.3)	42019	65.9 (65.5 to 66.3)	14256	22.4 (22.0 to 22.7)	7492	11.7 (11.5 to 12.0)
		All	75020		46766	62.3 (62.0 to 62.7)	16564	22.1 (21.8 to 22.4)	11690	15.6 (15.3 to 15.8)
2015	Low or contraindicated		5668	8.8 (8.6 to 9.1)	2653	46.8 (45.5 to 48.1)	663	11.7 (10.9 to 12.6)	2352	41.5 (40.2 to 42.8)
		Moderate	3876	6.0 (5.9 to 6.2)	1722	44.4 (42.9 to 46.0)	750	19.3 (18.1 to 20.6)	1404	36.2 (34.7 to 37.7)
		High	54536	85.1 (84.8 to 85.4)	39344	72.1 (71.8 to 72.5)	8850	16.2 (15.9 to 16.5)	6342	11.6 (11.4 to 11.9)
		All	64080		43719	68.2 (67.9 to 68.6)	10263	16.0 (15.7 to 16.3)	10098	15.8 (15.5 to 16.0)
2016	Low or contraindicated		4929	8.6 (8.4 to 8.9)	2340	47.5 (46.1 to 48.9)	441	8.9 (8.2 to 9.8)	2148	43.6 (42.2 to 45.0)
		Moderate	3481	6.1 (5.9 to 6.3)	1634	46.9 (45.3 to 48.6)	519	14.9 (13.8 to 16.1)	1328	38.1 (36.5 to 39.8)
		High	48751	85.3 (85.0 to 85.6)	36884	75.7 (75.3 to 76.0)	6040	12.4 (12.1 to 12.7)	5827	12.0 (11.7 to 12.2)
		All	57161		40858	71.5 (71.1 to 71.8)	7000	12.2 (12.0 to 12.5)	9303	16.3 (16.0 to 16.6)



Supplementary Figure 1. Proportion of patients with AF prescribed anticoagulants stratified by CHADS₂ score, 2000-2016



Supplementary Figure 2. Proportion of patients with AF prescribed anticoagulants stratified by eligibility, defined by CHA₂DS₂-VASc score and presence or absence of contraindications, 2000-2016

		2016				
		1	2	3	4	5
2006	1	4.7%	6.2%	2.5%	3.3%	3.6%
	2	4.3%	5.1%	4.0%	4.3%	2.2%
	3	4.7%	3.6%	3.3%	3.6%	4.7%
	4	3.6%	2.2%	6.2%	4.0%	4.0%
	5	2.9%	2.9%	4.0%	4.7%	5.4%

Supplementary Figure 3. Percentage of practices (n = 276) in each anticoagulant prescribing quintile in 2006 and 2016