

Flow cytometry and growth-based analysis of the effects of fruit sanitation on the physiology of *Escherichia coli* in orange juice

Anvarian, Amir; Smith, Madeleine; Overton, Timothy

DOI:
[10.1002/fsn3.947](https://doi.org/10.1002/fsn3.947)

License:
Creative Commons: Attribution (CC BY)

Document Version
Publisher's PDF, also known as Version of record

Citation for published version (Harvard):
Anvarian, A, Smith, M & Overton, T 2019, 'Flow cytometry and growth-based analysis of the effects of fruit sanitation on the physiology of *Escherichia coli* in orange juice', *Food Science and Nutrition*, vol. 7, no. 3, pp. 1072-1083. <https://doi.org/10.1002/fsn3.947>

[Link to publication on Research at Birmingham portal](#)

Publisher Rights Statement:
© 2019 The Authors.

General rights

Unless a licence is specified above, all rights (including copyright and moral rights) in this document are retained by the authors and/or the copyright holders. The express permission of the copyright holder must be obtained for any use of this material other than for purposes permitted by law.

- Users may freely distribute the URL that is used to identify this publication.
- Users may download and/or print one copy of the publication from the University of Birmingham research portal for the purpose of private study or non-commercial research.
- User may use extracts from the document in line with the concept of 'fair dealing' under the Copyright, Designs and Patents Act 1988 (?)
- Users may not further distribute the material nor use it for the purposes of commercial gain.

Where a licence is displayed above, please note the terms and conditions of the licence govern your use of this document.

When citing, please reference the published version.

Take down policy

While the University of Birmingham exercises care and attention in making items available there are rare occasions when an item has been uploaded in error or has been deemed to be commercially or otherwise sensitive.

If you believe that this is the case for this document, please contact UBIRA@lists.bham.ac.uk providing details and we will remove access to the work immediately and investigate.

1 **Supplemental Information for**

2

3 **Flow cytometry and growth-based analysis of the effects of fruit sanitation on the**
4 **physiology of *Escherichia coli* in orange juice**

5 Amir HP Anvarian^{1†}, Madeleine P Smith¹, Tim W Overton^{1,2*}

6 ¹ Bioengineering, School of Chemical Engineering, and ² Institute of Microbiology & Infection,
7 The University of Birmingham, Birmingham B15 2TT, UK

8 * Corresponding author: t.w.overton@bham.ac.uk; Telephone: +44 121 4145306; ORCID
9 0000-0003-3050-2549

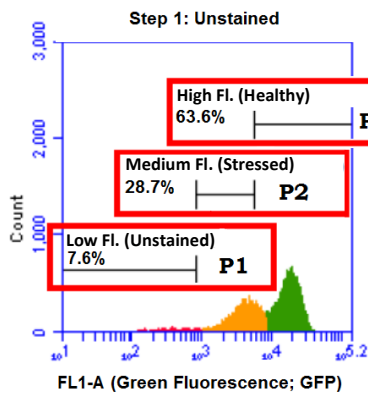
10 Email addresses: MPS - M.SMITH.2@bham.ac.uk ; AHPA - AAnvarian@lincoln.ac.uk .

11 †Current address: University of Lincoln, National Centre for Food Manufacturing, Holbeach
12 Technology Park, Park Road, Holbeach, Lincolnshire PE12 7PT, UK

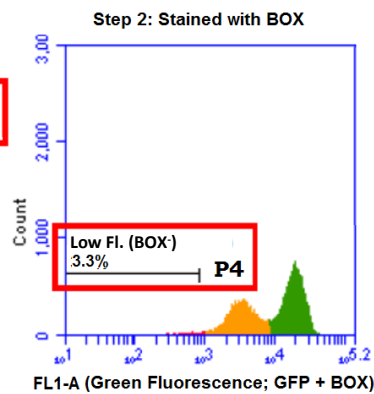
13

14 **Supplemental Figure S1**

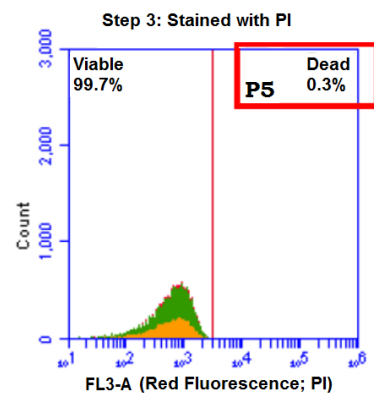
15 **A**



B



C



16

Physiological state	Fluorescence characteristics	Population above
Viable healthy	GFP ⁺ PI ⁻	P3
Viable stressed	Medium GFP	P2
Viable injured	GFP ⁻ BOX ⁺ PI ⁻	(P1 - P4) - P5
Viable low GFP	GFP ⁻ BOX ⁻ PI ⁻	P4
Dead	PI ⁺	P5

17

18 **Supplemental Figure S1: Simultaneous use of two green fluorophores of GFP and**
 19 **BOX along with red fluorescent viability dye of PI in order to study the number of**
 20 **healthy, stressed, injured and dead *E. coli* K-12 SCC1 cells in OJ.** The method of
 21 experiment was similar to what was described in Figure 1, with the difference of using BOX
 22 in addition to PI. **(A)** Inoculation of cells in OJ resulted in an increase in the number of low
 23 GFP and/or GFP⁻ cells. Reduction in GFP fluorescence was presumed to be due to change
 24 in internal pH and subsequent denaturation of GFP. Therefore, GFP⁺ were considered
 25 healthy whereas low GFP cells were considered to be stressed or injured cells. **(B)** Samples
 26 were then stained with BOX in order to determine the percentage of injured cells without a
 27 membrane potential. Addition of BOX caused a reduction in the number of cells with low
 28 green fluorescence (compared to histogram A), indicating the staining of the injured GFP⁻
 29 cells with BOX. **(C)** Staining the cells with PI showed the percentage of dead cells.
 30 Consequently, it was possible to calculate the percentage of injured cells by subtracting the
 31 number of dead cells (histogram C) and viable stressed GFP⁻ cells (histogram B) from the
 32 pre- BOX staining percentage.

33